

Effect of Leela Quantum Tech 'Super Bloc' on Frozen Water Drop Crystallization

Water Crystal Morphology Study

Conducting Institution	Wasserkristall Institut — Ernst F. Braun & Sarah Steinmann
Institution Address	Eichenweg 8, CH-3628 Uttigen, Switzerland
Website	www.wasserkristall.ch
Date of Analysis	November 2025
Test Subject	Leela Quantum Tech 'Super Bloc'
Water Type Used	Distilled Water (Ausgangswasser)
Methodology	Frozen Water Drop Photography under Microscope

1. Abstract

This report presents the results of a water crystal morphology study to evaluate the potential influence of the Leela Quantum Tech 'Super Bloc' device on the structural properties of distilled water. Frozen water drop photography — a method established within the field of water crystallography — was employed to visualize and compare crystalline formations between untreated baseline water and water that had been exposed to the device for a defined period. Qualitative differences in ice crystal structure were identified between the two conditions, with the treated sample demonstrating markedly more complex and symmetrical crystalline forms.

2. Introduction

The study of water crystal formation has been explored as a means of assessing subtle energetic or structural changes in water following various forms of treatment. Macro-crystallographic imaging of frozen water drops has been proposed as a potential visual indicator of structural changes.

The Leela Quantum Tech 'Super Bloc' is a device described by its manufacturer as emitting quantum energy fields. This study was designed to document observable differences, if any, in the crystal morphology of distilled water before and after brief exposure to this device.

3. Objectives

The primary objectives of this study were as follows:

1. To document the baseline crystal morphology of untreated distilled water (control condition).

2. To document the crystal morphology of distilled water after 3-minute exposure to the Leela Quantum Tech 'Super Bloc' (experimental condition).
3. To provide a qualitative comparative assessment of crystalline formation differences between the two conditions.

4. Materials and Methods

4.1 Water Sample

Distilled water (Ausgangswasser) was used as the test medium for both the control and experimental conditions. The use of distilled water was deliberate: this type of water is known to very rarely produce discernible crystalline formations in its baseline state, thereby providing a low-noise experimental baseline where any crystal formation would be noteworthy.

4.2 Test Device

The Leela Quantum Tech 'Super Bloc'. A small bottle filled with the distilled water was placed in proximity to the Super Bloc and exposed for a duration of 3 minutes (Probe Nr. 6846). No physical contact or chemical interaction between the device and the water sample occurred during this exposure period.

4.3 Control Sample

An untreated aliquot of the same distilled water source was prepared in parallel as the control sample (Probe Nr. 6845). No energetic exposure was applied to this sample.

4.4 Frozen Drop Photography

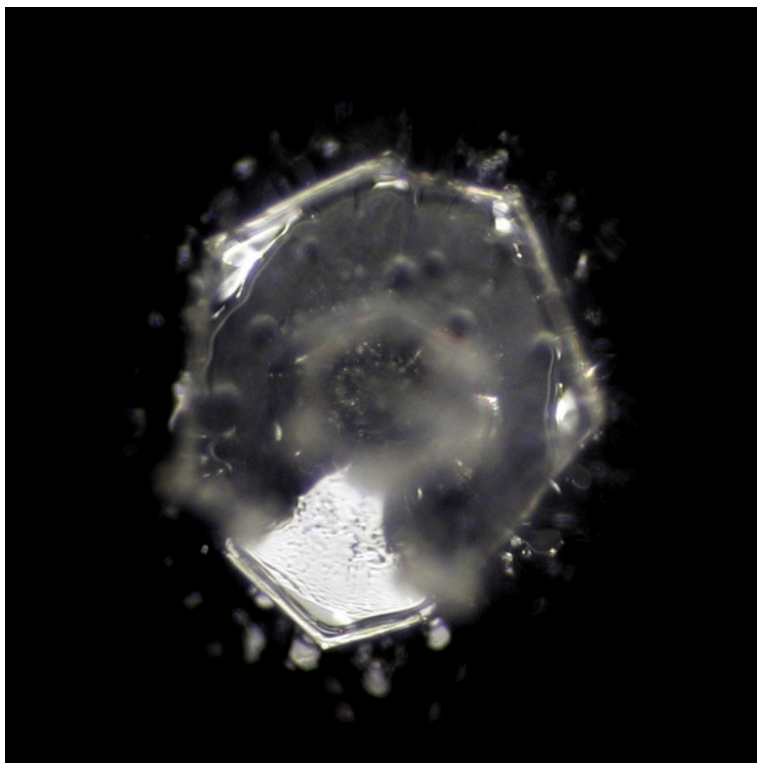
Small drops from both the control and experimental samples were placed onto petri dish supports and subjected to freezing. Once frozen, the resulting ice formations were photographed under a microscope at magnifications between 2× and 500× using digital photographic equipment at the Wasserkristall Institut. Images considered to show significant structural formations were selected by the supervising photographer for inclusion in this report.

5. Results

5.1 Control Sample — Probe Nr. 6845 (Base Water / Ausgangswasser)

The frozen drop from the untreated distilled water produced a single crystal selected as significant by the photographer. The resulting structure was amorphous and irregular in appearance, lacking the well-defined hexagonal symmetry associated with highly ordered ice crystal formation. The form appeared largely as an irregular, rounded mass with minimal radial organisation. This is consistent with the noted characteristic of this water type: distilled water rarely produces distinctly crystalline forms under these conditions.

Figure 1 — Control Sample: Base Water Crystal (Probe Nr. 6845)



Amorphous, unstructured frozen drop — no hexagonal symmetry observed.

5.2 Treated Sample — Probe Nr. 6846 (Leela Quantum Tech 'Super Bloc')

Following 3 minutes of exposure to the Leela Quantum Tech 'Super Bloc', frozen drops of the treated water demonstrated markedly different crystalline structures across all four selected images (A, B, C, D). The following observations were made:

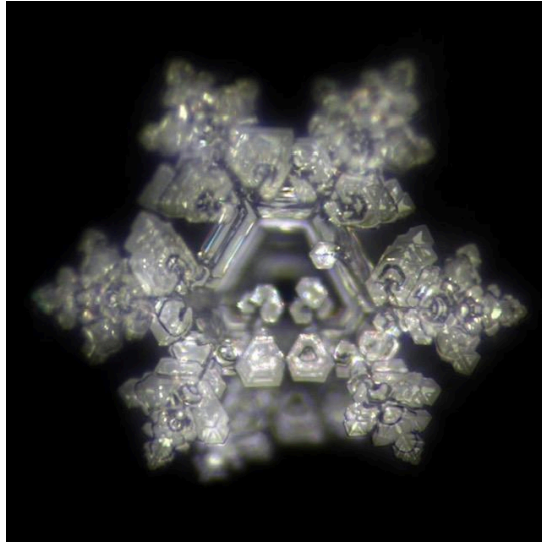
- Crystals A and B: Both drops exhibited well-developed hexagonal snowflake structures with multiple levels of radial symmetry. Clear six-fold symmetry was apparent, with secondary and tertiary branching arms visible from a central nucleus.
- Crystals C and D: These drops showed more elaborate hexagonal forms with geometric faceting, dense angular symmetry, and multi-order crystalline sub-structures at each arm terminus — demonstrating a high degree of structural organisation.

Figures 2–5 — Treated Water Crystals A, B, C, D (Probe Nr. 6846)

Crystal A



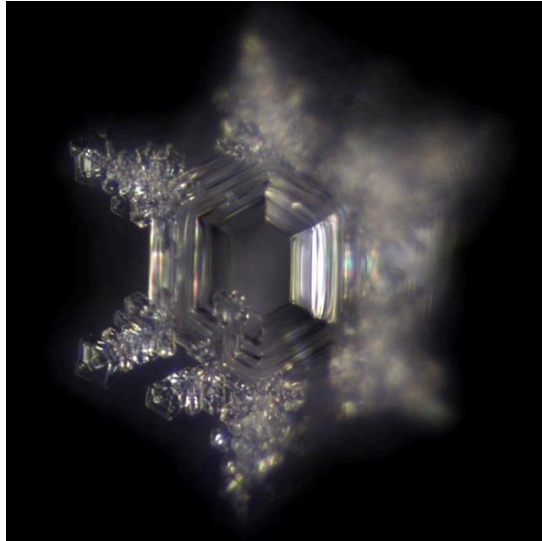
Crystal B



Crystal C



Crystal D



All four samples show well-developed hexagonal crystalline symmetry following 3-minute Super Bloc exposure.

5.3 Summary Comparison

Parameter	Control — Probe 6845	Treated — Probe 6846
Water Type	Distilled (untreated)	Distilled (3-min Super Bloc exposure)
Crystal Symmetry	None / Amorphous	Marked hexagonal symmetry
Branching Structure	Absent	Present (multi-order dendrites)
Structural Complexity	Low	High (consistent across 4 specimens)

6. Discussion

The results of this study indicate a notable qualitative difference in the crystalline structure of distilled water following 3 minutes of exposure to the Leela Quantum Tech 'Super Bloc' compared to an untreated control.

The control sample produced an amorphous ice formation with little structural definition — a result characteristic of distilled water, which typically lacks the mineral content or structural organisation required to generate well-formed ice crystals. In contrast, the treated water samples demonstrated complex hexagonal crystal forms, with radial symmetry, branching dendrite arms, and geometric organisation across multiple image specimens.

These observations suggest that exposure to the Super Bloc may be associated with a change in the structural properties of the water, reflected in its capacity to form ordered ice crystal structures upon freezing. The consistency of this outcome across four independent drops from the same treated sample further supports the observed effect.

It is important to note that this study is observational and qualitative in nature. Replicated, blinded studies with larger sample sizes and quantitative scoring metrics would be necessary to draw statistically robust conclusions.

7. Conclusion

This report documents a visually significant difference in the frozen crystal morphology of distilled water following 3 minutes of exposure to the Leela Quantum Tech 'Super Bloc' when compared to an untreated control sample. The control water produced a single amorphous, structurally undefined ice formation. In contrast, the treated water yielded four samples displaying well-organised, hexagonally symmetric ice crystals with complex, multi-order branching architecture.

These findings are consistent with the hypothesis that the Leela Quantum Tech 'Super Bloc' may influence the structural properties of water in a manner detectable through frozen drop crystal photography. The results are considered preliminary and observational. Further controlled, blinded, and statistically powered studies are recommended to validate and extend these findings.

Conducted by:

Ernst F. Braun & Sarah Steinmann

Wasserkristall Institut

Eichenweg 8, CH-3628 Uttigen, Switzerland

www.wasserkristall.ch

Report Date: November 2025