



IFVBESA

Information is crucial

P75 4.0.3 BESA-Detail-Project

Dark field microscopy - life blood analysis
for various dogs in the

Quantum Upgrade



Project P75 4.0 on BESA reports

Dark field microscopy - life blood analysis
as part of a BESA seal of approval
on the effectiveness of the product
“Quantum Upgrade”
on various dogs as test subjects
also referred to as “test object” in the project



Client:

company Leela Quantum Tech, LLC
Attn: Eleonora Goldenberg
1421 LUISA STREET, STE G
SANTA FEE, NM 87505
USA

Project participants:

Project management: Wolfgang Hans Albrecht, President and Scientific Director of IFVBESA and
Mag. med. vet. Barbara Hollogschwandtner

Tester: Eva Schmidt, Vice President and Deputy Scientific Director of the IFVBESA

Test subject (proband): 30 (16/14) pets as test subjects with correspondingly different age and health status in a randomised double-blind study.

Test subjects:

P75 4.1.1: 6 test subjects from P1 to P6
P75 4.1.2: 6 test subjects from P7 to P12
P75 4.1.3: 6 test subjects from P13 to P18
P75 4.1.4: 6 test subjects from P19 to P24
P75 4.1.5: 6 subjects from P25 to P28

Project location:

Location 1:

International Professional Association for BESA (IFVBESA)
Hauptstraße 1-2
A-4861 Kammer/Schörfling am Attersee

Location 2:

Holistic veterinary practice Purkersdorf
Mag. Med. Vet. Barbara Hollogschwandtner, veterinary
surgeon
Linzerstraße 63, A-3002 Purkersdorf

Date: from 05.03.2024 until 07.02.2025

Project duration: 325 days



Inhalt

Basics of research project creation P75 4.0	5
Project - Design	7
Test subjects.....	8
Abstract on an interdisciplinary perspective	9
Research funding services of the IFVBESA - BESA reference tests	10
Research project description and questions.....	10
Legend for interpreting the characteristics of the blood analysis	12
The result of an interdisciplinary perspective on the regulation of chronic stress in dogs.....	45
General information on the test result	46
Authorized Summary.....	48

Important notes

The client has the right to utilize this expert opinion/project. Irrespective of this, this report/project is the intellectual property of IFVBESA as the contractor. The contractor is authorized to use this expert opinion/project for other purposes, provided that this does not violate the client's data protection and confidentiality obligations. Apart from this, this project/expert opinion, with the exception of the "Authorized Summary", may not be changed or abridged and passed on without the consent of IFVBESA. The order for this report/project relates to physical and energy-informative measurable values, the interpretation of which is based on the guidelines of BESA or IFVBESA. Maintaining the quality/effectiveness of the tested technologies/processes/products and their regular monitoring is the task and responsibility of the client. For this reason, the technologies/processes/products are subjected to regular efficacy tests by the IFVBESA in order to confirm their functionality in the respective certificates with a validity period. The examination of the manufacture, the mechanism of action or interpretations of the client's products vis-à-vis third parties are not the responsibility or task of the contractor. Video recordings may only be made with the authorization of IFVBESA.



Basics of research project creation P75 4.0

The International Federation for Bioenergetic Systems Analysis - IFVBESA was commissioned by the company Leela Quantum Tech LLC to test and prove the effect of the test object 'quantum upgrade' on dogs using DF microscopy (live blood or vital blood analysis). The test was carried out independently of the subjective perception of the test person.

Description of the test object, "Quantum Upgrade" by the client:

Firstly, it is important to understand that two independent objects can be energetically connected to each other. This connection or "association" is known as quantum entanglement. As soon as these two objects are entangled with each other, a change in one object or entity also causes a change in the other or the other - even if they are not in close proximity to each other.

This is why, for example, a mother can "feel" when something happens to her child, even if she is thousands of kilometres away. She is connected to her child (in quantum terms, they are said to be entangled with each other). In this way, scientists can also take a skin cell or blood sample from an astronaut on Earth, send it into space and detect any changes in the cells or samples that remain on Earth.

„Quantum Upgrade" utilises the same proven principle

Through years of research and the development of the Quantum Upgrade product, the company "Leela Quantum Tech, LLC" has created one of the world's most powerful sources of usable quantum energy. With the Quantum Upgrade, any biological object can be connected to this quantum source (energy source).

Immediately after activation, there is an immediate quantum entanglement and quantum energy is channelled to the locations previously defined within the scope of the respective requirements. Healers, emphatic people or those who are particularly sensitive to fields such as electromagnetic fields (EMF) or electromagnetic radiation will probably notice the difference immediately. Others may need a little more time or may not "feel" anything at first - until the first changes in their lives become apparent.

How quantum energy supports change

In physics, there is the so-called principle of inertia, which states that

"A body at rest remains at rest or maintains its state of motion as long as no force acts on it or the sum of the forces cancels out. A body in motion also continues to move at a constant speed as long as no external forces act on it".

This so-called first Newton's law can therefore be applied just as well to all biological objects as to humans: It is easier to keep something the same than to change it, as change requires more energy.

But what happens if you don't have enough energy to change? You get stuck. And that is precisely the point at which the majority of humanity finds itself. They are stuck in old ways of thinking, acting and living. This is one of the reasons why meditation, prayer and other spiritual practices can lead to powerful changes. They connect us with the "source" or, in other words, back to our source (origin, the absolute) via quantum energy.



And thanks to this additional energy (quantum energy), the "quantum upgrade" can bring about a change that would have been impossible before.

The Quantum Upgrade as a tool

A "Quantum Upgrade" is a technology, one could also consider it a tool, that creates a concentrated quantum energy space.

This is able to balance energies, increase performance and build up protection against e.g. harmful electrosmog radiation (EMSF). Quantum Upgrade is the most innovative development in the field of natural health, combining science and quantum energy healing in an easy-to-use and easy-to-understand subscription service.

Quantum energy harmonises body, mind, spirit and consciousness (body as the embodiment of consciousness). It expands consciousness and activates the flow of pure life energy through the body!

However, juggling the demands of modern life can be tiring and stressful and can leave people feeling overwhelmed. Subconscious fears and ingrained opinions often make us forget that we all have infinite potential and are beings without limits.

And this is exactly where the Quantum Upgrade helps us to return to our natural ego state and expand our consciousness in the long term

In this way, a healthy, fulfilling and meaningful life can be experienced.

Polarity

There is no polarity in the Quantum Upgrade. Magnets add pressure, instability and a certain type of alignment to a quantum field, so the energy of a magnet-supported quantum field is a "trapped" and almost locked-in energy force that cannot flow freely and is constantly battling with the magnetic field. From an energetic point of view, the field must constantly recharge itself. The instability, disharmony and energetic pressure can be felt and "seen" in such devices, and they affect everything in their vicinity.

With the Quantum Upgrade, a groundbreaking new quantum energy generator has been created that provides not just a one-dimensional quantum field, but a truly multi-dimensional quantum space and is also very powerful. It is also not bound in any way to the Earth's magnetic fields and can therefore be considered (and energetically looks like) a quantum sun, as it radiates and emits freely in all directions without an Earth-bound flux. The "Quantum

Upgrade" is dynamic, harmonic, always stable and retains these properties when the quantum energy concentration and the levels of consciousness/perspective are increased. Although the use of a Quantum Upgrade comes with a certain responsibility, one should know that the energy is always balanced and harmonious.

To the Quantum Upgrade as a test object:

Animals also benefit from the "Quantum Upgrade"

Not only humans benefit from the positive effects of quantum energy. Animals can also sense the energy and utilise it very well for themselves, provided it is tailored to their needs.

These indications are intended as an interpretation of the scope of the effect of the test object and an indication of its holistic orientation. The effect of the "Quantum Upgrade" can thus be easily achieved for the animals.



The concept of this test object is therefore to harmonise and neutralise disturbances, problems, blockages and disharmonies in the animals' environment and thus replace negative states with positive states. Due to its mode of operation, the test object has a simple and yet very effective area of application for the animals.

The animals/subjects are primarily selected by the project partner Barbara Hollogschwandtner, MD. A detailed description of the animals can be found in the project description.

Project - Design

This project is an explorative study in which the harmonising effect of the test object on 28 test subjects (dogs) is investigated. This project is double-blind, randomised and carried out in relation to the test object using quantum entanglement. In this scientific experiment, there are at least 14 test subjects in an experimental group (treatment group) and 14 test subjects in a control group (placebo). In addition, 2 test subjects are shown (P6 and P16), who were confronted with the test object for 4 weeks after the end of their participation in the project (control group). For results see P6-TO and P16-TO

The results with regard to the effect of the test object are even more significant than those of a pure double-blind study because the design of this project includes modern, quantum-physical elements. It thus creates new paths and standards in the field of research into clinical quantum technologies and their modes of action.

The explorative research approach of the IFVBESA

New knowledge, new insights and new ideas are the breeding ground in which science and the technologies of the future thrive. The explorative approach of most of our research projects is the seed for the information medicine or quantum technology of tomorrow. In exploratory study design, we present a methodological research approach in which research areas or research questions are investigated that have not yet been investigated. This demonstrates both the development and the potential of novel approaches for research into future technologies.

The concrete and feasible application reference of the international professional association for BESA reduces the otherwise high research risk that often prevents companies and research institutes from dealing with topics at a very early stage of development.

Double-blind and randomised

This project is conducted in a double-blind, randomised and quantum-entangled manner. Double-blind means that neither the subject nor the tester knows who will be confronted with the test object and who with the placebo. This is only possible through random group allocation (randomisation). The aim of blinding is to analyse the results as objectively as possible.

Randomised means that a procedure is used in this project in which the test subjects are randomly assigned to the control group or the experimental group.

Quantum entanglement:



Quantum entanglement is not a physical connection between particles, but a synchronisation of information and energy in the field of consciousness. Everything is already connected - not through space and time, but through coherent resonance within a universal information network. Matter is therefore merely a condensed manifestation of this interaction of consciousness.

This means for the current test object: Each test subject (in this case the dogs) receives an energy-informative signature via virtually defined coordinates. This signature forms an energy-informative imprint in the quantum field and exists as a constant reality at every moment of movement.

It stores the frequency and essence of what is mapped via the coordinates and remains stable in the universal information network as a real extract of the space of consciousness. This creates an energetic bridge - a connection between the original moment and the current space of consciousness that remembers and works independently of space and time.

About photography: A photograph is therefore an energetic-informative imprint from the quantum field. This means that a photograph is a visual reminder on the one hand and establishes an energy-informative connection to the current or original moment on the other. The photographs were tested and analysed in the IFVBESA laboratory using a BESA surrogate. This means that all subsequent BESA tests in the project, which are recorded using photographs, are subsequently carried out under the IFVBESA laboratory conditions mentioned above.

What does surrogate mean: This is a substitute person who stands in for the respective test person live in the case of a quantum entangled BESA test or application of the test object.

Placebo (empty object): In this case, unlike the test object, the placebo is an empty object that does not contain any effective frequencies. The test object cannot be distinguished from the empty object (placebo) either for the test subjects or for the test persons.

Test subjects

In addition to the test object already described, at least 28 test subjects form the framework for this research project. In parallel, additional test subjects will be integrated as substitutes for possible unexpected dropouts.

The test subjects as animals (dogs) will be informed in advance of this project via the dog owners about the general procedures for this project and their function as representatives (see corresponding documents).

General means that neither the subjects nor the test persons know what the background of the series of measurements is. The aim of this type of blinding is to obtain as objective an evaluation of the results as possible in order to exclude so-called placebo effects.

The test subjects are anonymously assigned a number from P1 to P28. The test subjects are also anonymously assigned to either the control group or the experimental group.

The different appointments made with the test subjects for the BESA tests may result in the test subjects' numbers from P1 to P28 appearing differently in both the experimental group and the control group. For this reason, in the statistical analysis, the numbers of subjects P1



to P30 are additionally numbered from 1 to 28 (see list of the experimental group and the control group)

For those test subjects who did not have the opportunity to take part in the BESA tests live during the scheduled period, photos were taken for the quantum entangled BESA tests. The photos were printed on high-quality photo paper, which is necessary for this form of BESA testing. These test subjects are also included in the statistics with quantum entanglement (QV).

The BESA tests are carried out as follows for each test subject:

1. at the beginning of the project to create a so-called status (actual situation).
2. in the 2nd part of the project after at least 4 weeks of exposure to the test object or the blank object (placebo).

Abstract on an interdisciplinary perspective

General

Chronic diseases such as atopic dermatitis, gastrointestinal dysbiosis, respiratory problems, epilepsy and cancer are increasing alarmingly in dogs. Our own initial research results show that these problems are caused on the one hand by environmental factors such as environmental toxins, electromagnetic interference fields (EMSF) and inadequate nutrition, and on the other hand by psychosomatic stresses that dogs often pick up from their owners' emotional environment (e.g. grief or guilt).

Questions that flow into this current study

In this current study, we are investigating the effect of an innovative test object on the general health parameters of dogs. The bioenergy-informative system analysis (BESA) is used to detect possible changes in the energy-informative status and in the vital blood of the animals. Initial results indicate that quantum technology at least stabilises the status of the energy-informative system, opens blocked control loops, modulates inflammatory processes and promotes a sustainable balance in the organism. The initial results of BESA tests show a clear regulation of the energy-informative parameters towards a regulative behaviour. Particularly noteworthy is the observed interaction between the emotional stress of the animal owners and the health of the animals. In many cases, stress-related digestive insufficiencies were found, which led to further stress.

Stress axis

A central aspect is the role of the HPA axis (hypothalamic-pituitary-adrenal axis) in connection with chronic stress. Overstimulation of this axis by physical and emotional stressors impairs hormonal regulatory systems (e.g. cortisol, melanin, melatonin, etc.) and leads to systemic inflammation, immunodeficiency and impaired digestion. Electromagnetic interference fields intensify these stresses as they disrupt cell communication and generate and promote oxidative and nitrosative stress.

Melanin and melatonin play a key role here: melanin not only acts as a pigment, but also as a bioenergy-informative protective system against EMSF, while melatonin has antioxidant and



anti-inflammatory properties. However, stress and EMSF impair their function, which weakens the body's ability to regenerate.

Summarised

The initial results suggest that the technology of the test object can bring about energy-informative harmonisation, support the homeostasis of the HPA axis and promote the regulation of melanin, melatonin and cell communication.

The planned study aims to further investigate these potential effects and shed light on their significance for holistic animal health.

Research funding services of the IFVBESA - BESA reference tests

Project P75 4.0.3 is specifically concerned with proving the effectiveness of the test object's technology on test subjects 13-18 as dogs.

The test object is tested in accordance with the client's wishes within the framework of the applicable IFVBESA conditions for awarding quality seals. In principle, seals of approval are awarded in three categories depending on the significance of the test results, taking into account all tests of a project. The purpose of the test object is to determine whether its application can harmonise and neutralise the above-mentioned stresses from the typical environmental influences and, as a result, harmonise or neutralise existing disturbances, problems, blockages and disharmonies in the energy system of the test subjects (biological system of the animals) and thus replace negative pathological conditions with positive conditions. This will be scrutinised in the following tests commissioned for this project.

Research project description and questions

The purpose of the test is to prove the functionality of the „test object“ by means of test results obtained by subjecting the vital blood of the test subjects to a vital blood examination in BEFORE microscopies in order to connect it with the ‘test object’ (experimental group) and without the test object (control group) in the AFTER microscopies and to microscope and examine it.

In the course of this project, the photographs and videos of all test subjects will be viewed and scrutinised with a view to the morphology of the blood and the blood environment. The focus here is therefore on the functionality and mode of action of the ‘test object’ in relation to the vital blood or environment of the test subjects.

- The BEFORE microscopies (experimental group) are carried out without the ‘test object’.
- The AFTER microscopies are carried out with the test object (experimental group) and without the „test object“ (control group).

The question for each AFTER microscopy was: „Is the “test object” suitable and able to harmonise or neutralise the perceived stressful effects on the organism of the animals from the BEFORE microscopies“?



The appropriately designed tests should provide information on this by comparing the BEFORE microscopies without the „test object“ with the test results of the AFTER microscopies to be carried out using the „test object“.

General research questions:

1. can the technology of the test object influence the effects of the addressed stress factors at the level of the HPA axis or the addressed hormonal markers such as melanin and melatonin in the dogs in a positive-constructive and life-promoting way?
2. is a measurable relief of chronic stress possible through targeted application of the technology of the test object?

Detailed questions:

Question 1: Can possible pathogen-morphological developments improve under the influence of the ‘test object’ (test subjects of the experimental group) in the AFTER microscopies?

Question 2: Is the effect of the quantum field from the ‘test object’ via the process of quantum entanglement able to harmonise or improve a blood situation that may be detrimental to the health of the dogs (test subjects)?

Question 3: What altered behaviour can be observed in the immune system, especially in the red and white blood cells (e.g. erythrocytes, leukocytes, monocytes, lymphocytes, thrombocytes, etc.)?

Question 4: In what way can the environment be adapted by the influence of the test object?

Question 5: Is it the environment that undergoes regeneration through the influence of the test object and thus influences its individual blood components?

Question 6: What conclusions can be drawn from the application and the already proven effect of the ‘test object’ on the situation of the animal stress factors?

The client's concern is to determine whether the ‘test object’, as noted in the product description, is suitable for harmonising the disturbances, problems, blockages and disharmonies in the meridian system of the test person (biological object-animals) resulting from the BEFORE microscopies (without test object).

General information on the information transfer of the test object

Information is transferred from the hyperspace of the test object to the hyperspace of biological objects (humans, animals, plants). From there, the information reaches the reference space or energy space via so-called interaction channels. This is an amalgamation of all organs and forms of energy in the biological object. This is where the information from the programme can be dynamically realised and thus change current states. The changes can manifest themselves in the form of neutralisation or harmonisation of disturbances, the resolution of problems, blockages and disharmony.

Conditions:



The corresponding BESA tests are carried out in the IFVBESA premises under laboratory conditions, at room temperature 20°Celsius, on natural wood flooring. As a matter of principle, the test subjects are desweathed (made fit for testing) before the microscopies or the test subjects are questioned about the possibility of testing.

The corresponding DF microscopies are carried out under laboratory conditions at room temperature of 20°Celsius.

Legend for interpreting the characteristics of the blood analysis

The most important real phenomena in relation to parasites and their significance

Red blood count and milieu

Agglutination of the erythrocytes (AE):

non-specific agglutination (cell accumulation) of the erythrocytes (red blood cells), low values are an expression of vital blood

Chondrite - micro-chondrites (MiCH):

Last stage of the low-valent apathogenic endobiont forms. Can form entire networks or meshes of fibrin - restriction of flow velocity (viscosity), congestion, microcirculatory disorders

Chondrite - macro-chondrites (MaCH):

Signs of high pathogenicity, from endobiontically damaged erythrocytes, can also detach - free in blood plasma.

Overfilling of the plasma space with endobionts (ÜE):

Shrinkage of erythrocytes, increased formation of cogwheel cells and ghosts.

Anisocytosis (AZYT):

Differences in size between erythrocytes due to pathogenic effects, -> Consumption processes with erythrocyte reduction in size

Cogwheel cells with symprotite filling:

In the advanced endobiosis stage (pathogenic), snake-like outgrowths form

Cogwheel cells with vacuoles:

In the advanced endobiosis stage (pathogenic), vacuoles form inside the cells. Cells.

Bear paw erythrocytes (BTE):

Predominantly in renal insufficiency or overload, haemolytic anaemia

Blood flow properties (FEB):

The higher the blood flow properties, the more efficient the quality of oxygen supply to the target areas with oxygen.

Deformation of the cell membrane (DZM):



Disturbances in the regular shape of the erythrocytes (blood-cell membrane disorders) or Irregularities in the membrane shapes of the red blood cells. The more regular, the more pronounced the vitality of the blood.

Filitisation (FB):

Filament networks in the blood, restriction of the microcirculation and flow properties of the blood, => arterial and venous congestion, circulatory disorders, forms of hypertension, and much more. Filit formation is a sign of oxidative stress. The lower or harmonious filit formation, the higher the stress tolerance. Adequate filit formation is an expression of harmonious cell metabolism

Filit-nest-filit-symplasts (FN-S):

Strong accumulation of filament networks in the blood to form nests or further to form regular symplasts when combined with endobiotic material.

Haemolysis (H):

Disintegration or dissolution of the erythrocytes (red blood cells)

Mychite or ascite (A):

Spherical primordial germ cell of all bacteria, with wall-bound nucleus = mychite. They can also form groups (many small mychites). Original form of bacterial formation of cocci or rod bacteria. Can be found in the environment as well as within erythrocytes, e.g. *Leptotrichia buccalis* extracellular and intracellular.

Ascitic chains (AK):

Chain-like accumulation either free or growing from erythrocytes or leucocytes highly pathogenic.

Dendroid vacuoles, erythrocytes with vacuoles (EV):

Vacuoles are formed by decay and consumption processes of erythrocytes by the endobiont. These are highly pathogenic conditions.

Thecite (TH):

Original form of all bacteria in a primordial spherical shape with more or less mobile primordial nuclei in groups or individually - more or less pathogenic depending on the stage

Thecites in erythrocytes (THE):

Highly pathogenic stage

Symplasts (S):

Form a cyclogenic stage. By shifting the blood pH => alkaline orientation. Their pathogenicity can only be differentiated according to cyclode affiliation, form and species.

E.g. *Mucor* symplasts, *Aspergillus* symplasts, mixed symplasts etc.

Mucor symplasts (MS):

Aspergillus symplasts (AS):



Sclero-symplasts (SS):

Sclerotic or crystalline forms of symplasts, dry-protein forms - due to dehydration, proliferating and manifold formations of a vesicular, disc-shaped to sheet-like nature

Parasitic burdens (PB):

E.g. *Leptotrichia buccalis* intra- or extracellular, (LB). It should be noted here that the topic of parasites is more far-reaching than those mentioned here. According to Prof Dr Enderlein, parasites develop in an environment that is, roughly speaking, altered or contaminated. The respective environment enables the protite to develop higher or regress according to the bacterial cyclogeny. Parasites can therefore be both apathogenic and pathogenic

Aspergillus Butterfly - Pteroharps (AB):

High valences of *Aspergillus niger* von Tieghem, sign of a very high endobiontic state.

Sporoid symprotites - sclero-symprotites (SS):

Strongly luminous in several colours, depending on organ assignment, -> sclerotic forms of the endobiont, -> pathogenic.

White blood count

Thrombocyte symplast (TZS):

Concentrated platelets mixed with calcium and cholesterol, -> thromboses and atherosclerosis Endobiontic infestation of the white blood cells (EBWBK):

Chain-like accumulation of ascites either free or growing from leucocytes highly pathogenic.

Endobiontic destruction of leukocytes (ZL):

Dissolution of leukocytes by endobiontic infestation, highly pathogenic

Traces - spike protein (SP):

Typical haemolytic processes (disintegration or dissolution of erythrocytes and leukocytes) at all stages of cyclogenesis.

Conclusion and drying forms in the blood

Chondrite processes from erythrocytes (CHF1):

Chondrite projections from white blood cells (CHF2):

Signs of high pathogenicity, from endobiontically damaged erythrocytes, can also detach - free in blood plasma.

Intestinal pattern (DM):

Drying forms that are similar to an intestine -> note stresses in the intestine in general.

Drepanites - fish spine (DFWS):

Dry protein sheaths arranged one behind the other, chronic condition which can be assigned to *Mucor* as well as *Aspergillus* *Cyclode*.

Systagonia, scleroforms and pseudo-crystals (PK):

Nationalisation to higher organisms, complicated living - partly fantastic natural formations. In severe chronic conditions in viral, bacterial or mycotic stages.



Bryosclerite - star splash (BS):

Sclerotics as dry protein symplasts - enchanting blood morphological dryings like star splashes.

Test procedure

Microscopy 1 BASIC BEFORE as status

In the first step, microscopy is performed as status on the vital blood of the test subjects (dogs).

Microscopy 2 AFTER with the 'test object' (experimental group) or without the 'test object' (control group)

In the second step (about 4 weeks later), microscopy is again carried out on the test subjects (dogs), regardless of whether the test subject is in the experimental group or the control group

Now the question is: How does the vital blood of the test subjects react within the effective range of the 'test object' (experimental group) or without the test object (control group - placebo)?

Results of the observation of study P75 4.0 Experimental group and control group

In the following, test subjects from the experimental group are presented and interpreted for photographic and video documentation of the changes observed during the microscopic examination of the blood. The following illustrations show the expression of the morphology of the blood representatively and summarised for all test subjects in a BEFORE and AFTER illustration with its peripheral blood changes.

For descriptions of the microscopy of the following test subjects, see also the project description for study P75 4.1.



Subject 13 TE

Control group BEFORE

Male-dog: Tomasina, mixed breed
Date of birth: approx. /2021
Body weight: 35kg

Status of health:

- silent inflammation
- otherwise no health challenges

FIGURE 1 BELOW shows an extract of the blood condition of the subject after microscopy BEFORE.

All images clearly show bizarre crystal formations (sclero- and mixed symplasts, i.e. mucor-aspergillic), which indicate a high acid load (e.g. uric acid, joint load - rejection).

Here, the transformation of a mixed symplast occupied by sporoid symprotites into the sclerotic survival form has taken place or continues to take place.

Such processes can take place either after strong drug treatment or due to strong toxic exposure (environmental toxins, incorrect diet, etc.).

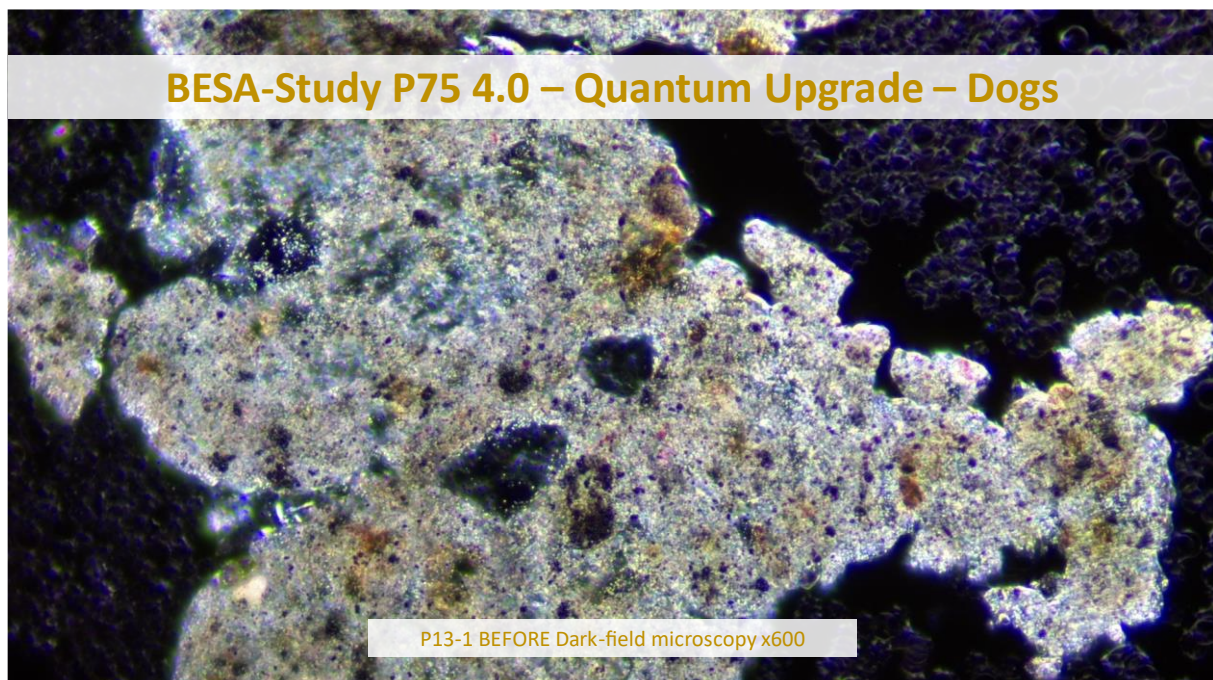
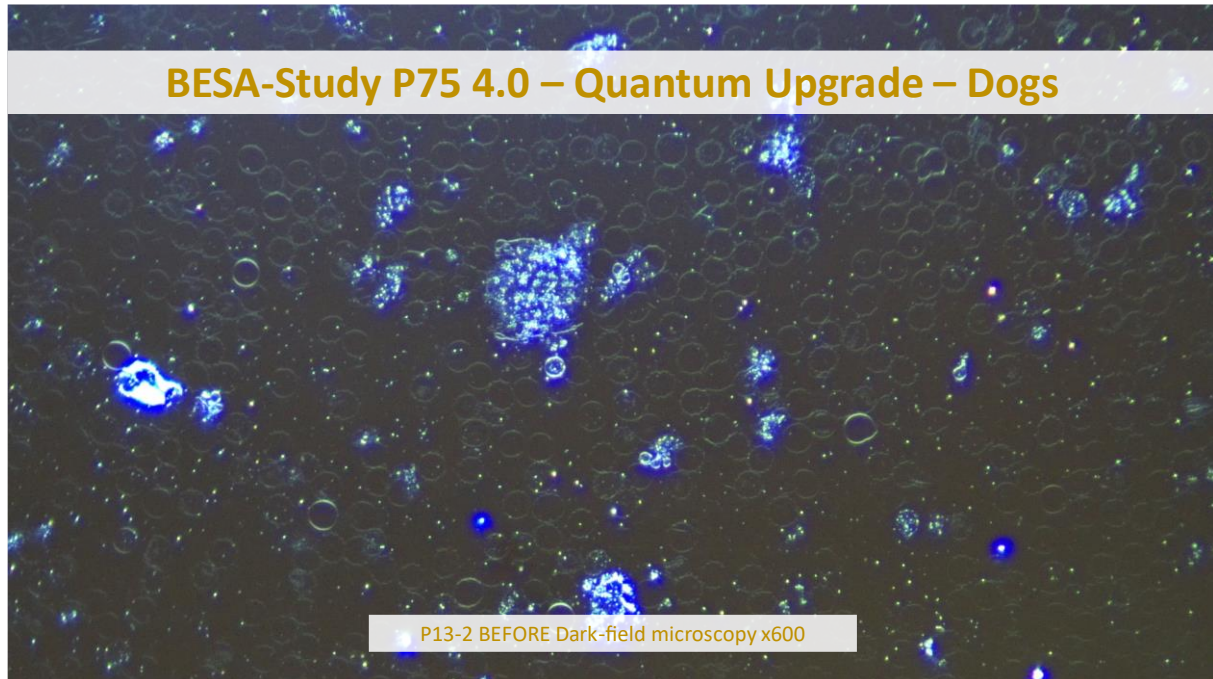


FIGURE 2 BELOW shows an extract of the subject's blood condition after microscopy.

The image clearly shows a sea of haemolysing erythrocytes (ghosts), which provide an indication of the presence of spike proteins, which are responsible for this environment of destroyed red and white blood cells, among other things. Furthermore, vacuoles can be seen within the erythrocytes.

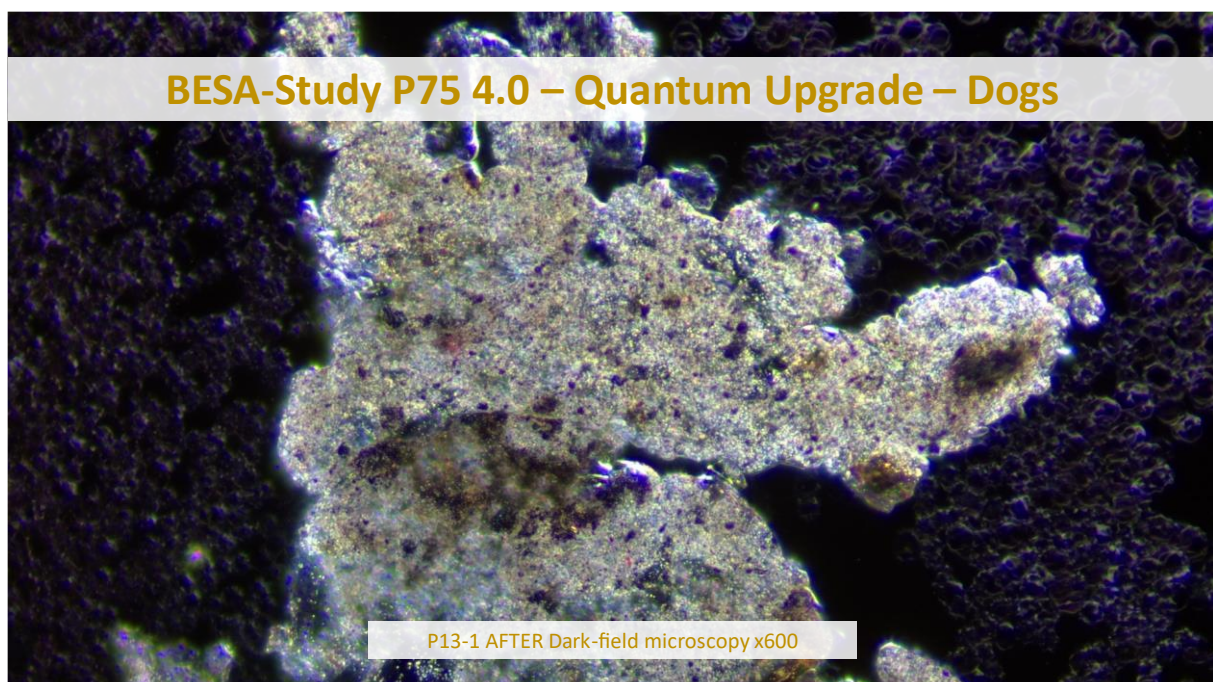


They are caused by these decay and consumption processes by the spike proteins. They are always a sign of highly pathogenic conditions.



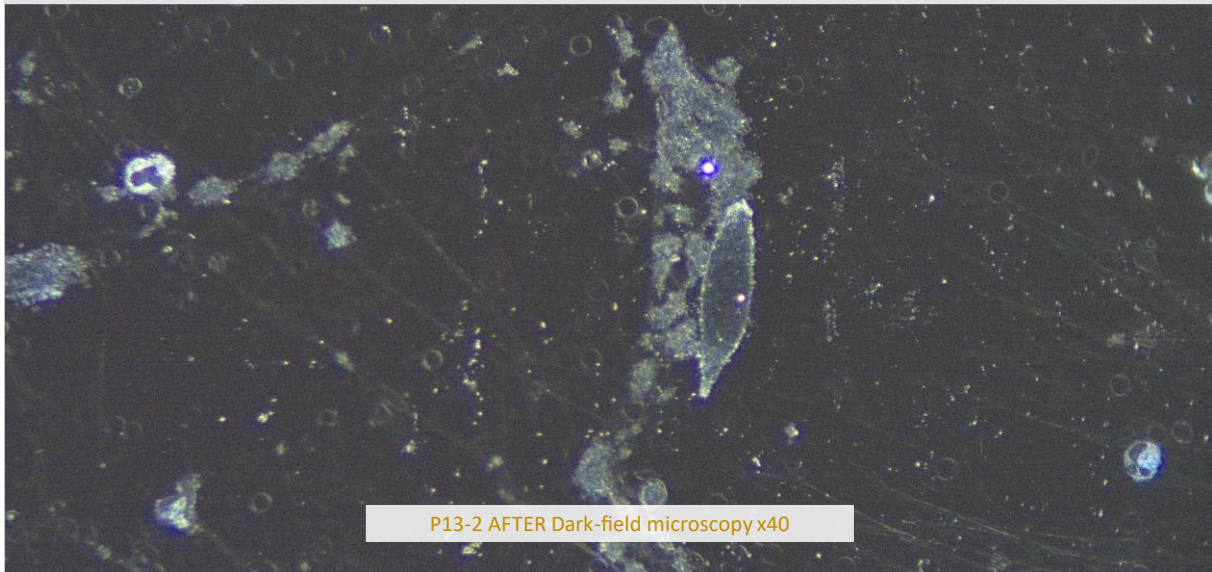
Subject 13 TE Control group AFTER

The following FIGURES 1-3 BELOW show an extract of the blood condition of the subject after the microscopy AFTER.





BESA-Study P75 4.0 – Quantum Upgrade – Dogs



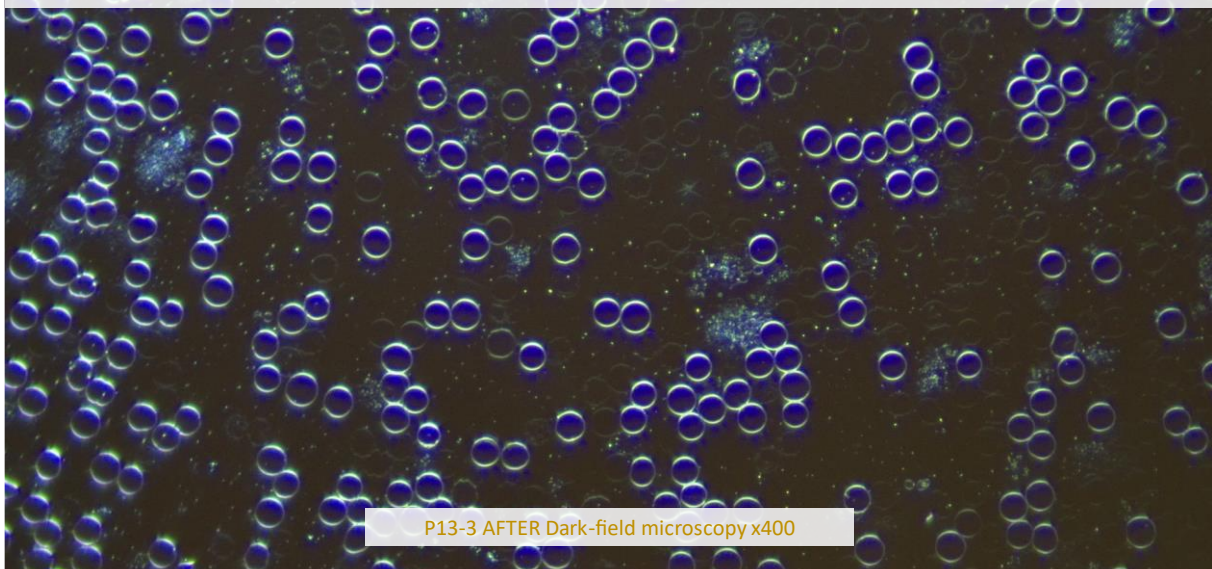
P13-2 AFTER Dark-field microscopy x40

The AFTER microscopies were taken almost 4 weeks after the BEFORE microscopies and WITHOUT confronting the subject with the test object.

The images were again taken a few minutes after the blood sample was taken.

All three images show that the stressful, largely highly pathogenic factors from the BEFORE microscopies are still largely present.

BESA-Study P75 4.0 – Quantum Upgrade – Dogs



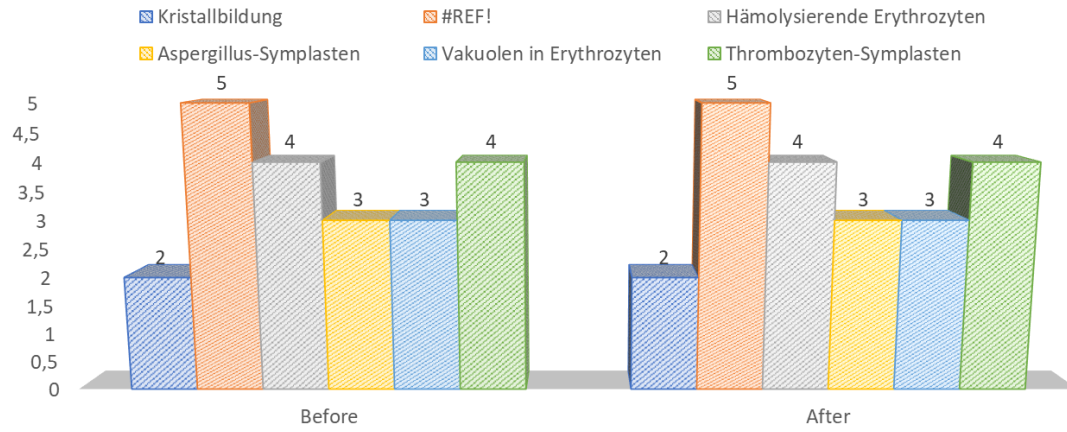
P13-3 AFTER Dark-field microscopy x400

Status of health AFTER: still unchanged.

See also project description P75 4.1.3 and personal feedback form under respondent 13.



BEFORE-AFTER OVERVIEW



	Before	After
Kristallbildung	2	2
#REF!	5	5
Hämolysierende Erythrozyten	4	4
Aspergillus-Symplasten	3	3
Vakuolen in Erythrozyten	3	3
Thrombozyten-Symplasten	4	4



Subject 14 SN 2

Control group BEFORE

Male-dog: Sammy 2, Big poodle
Date of birth: 09/09/2016
Body weight: 23kg

Status of health:

No major health challenges

FIGS. 1 to 3 BELOW show an extract of the blood condition of the subject after microscopy.

All images clearly show strongly deformed erythrocytes and shadow cells (ghosts). They are also called haemolysing erythrocytes and are an indication of stressful spike proteins. They promote the decay process of erythrocytes, the white blood cells, and promote the pathogenicity of the blood environment shown. FIGURE 2 BELOW shows a bizarre-looking mixed symplast. Crystal formations (sclero-symplasts). Indication of a highly pathogenic process. Very high acid load (e.g. uric acid, joint load - over-rejection).

The formation of agglutination of the erythrocytes indicates oxidative stress (over-referral - Mucor type).

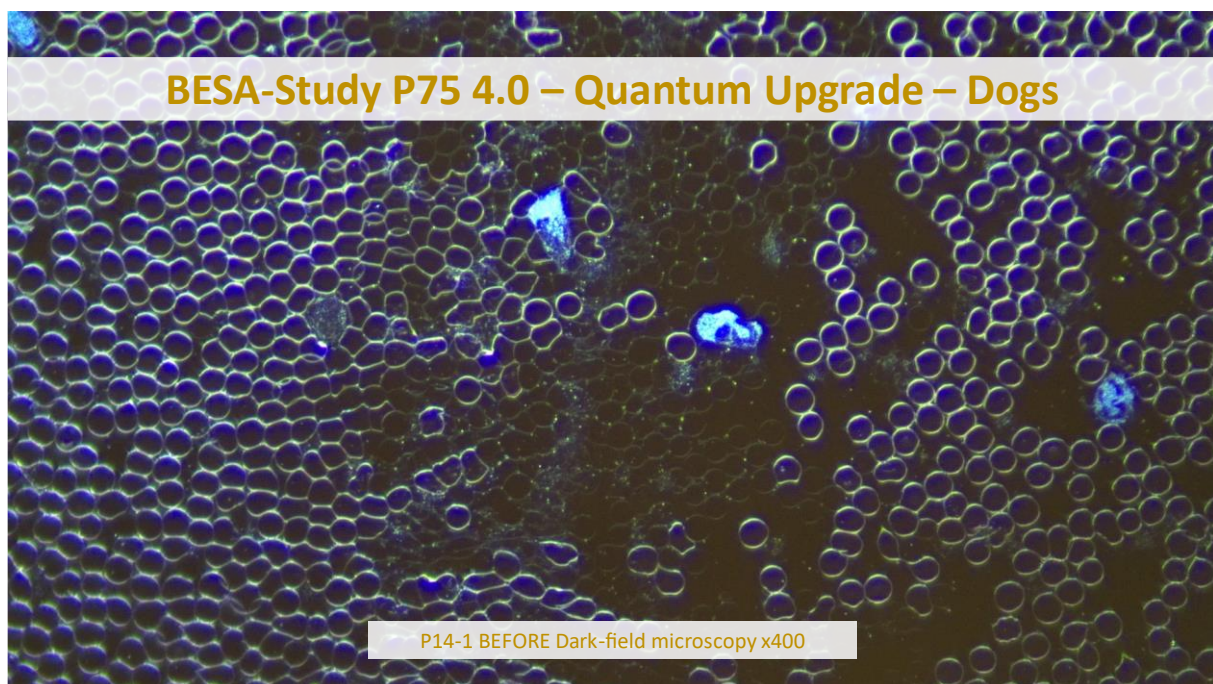
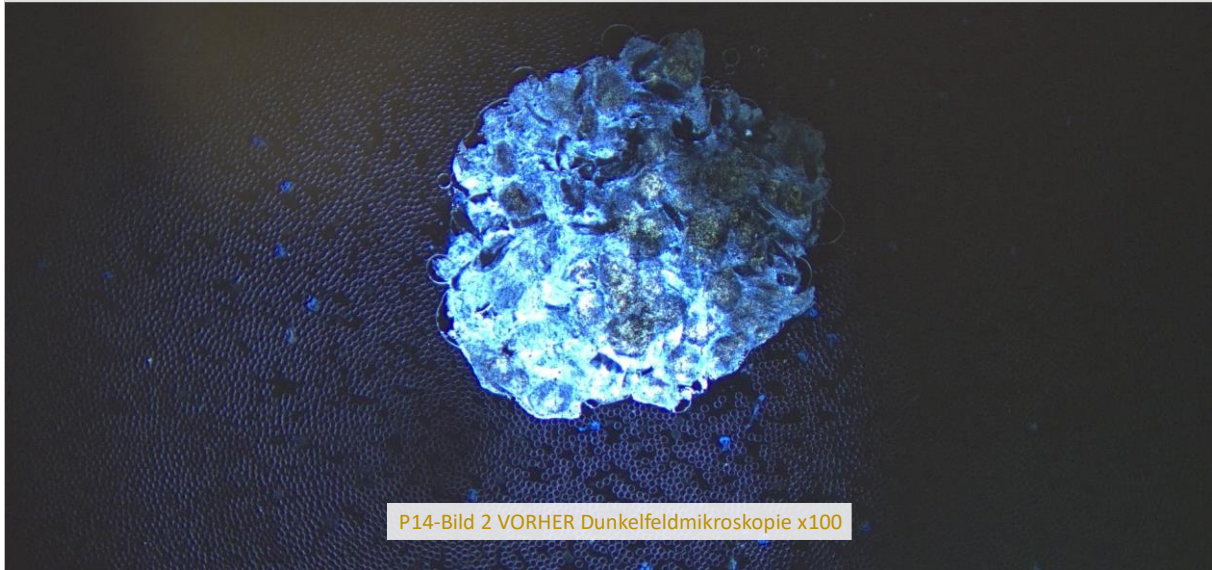


FIGURE 3 BELOW again shows severely deformed erythrocytes and shadow cells (ghosts). In the vital blood, stress can often be shown in advance, which can then only gradually be diagnosed on the physical level.

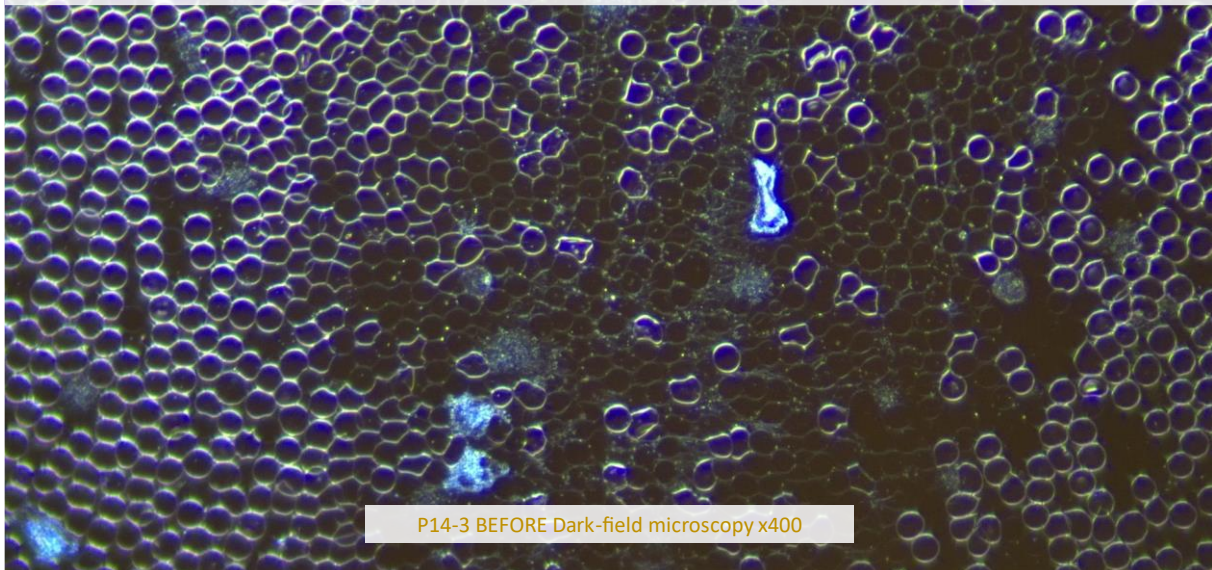


BESA-Projekt P75 4.0 – Quantum Upgrade – Hunde



P14-Bild 2 VORHER Dunkelfeldmikroskopie x100

BESA-Study P75 4.0 – Quantum Upgrade – Dogs



P14-3 BEFORE Dark-field microscopy x400

Subject 14 SN 2 Control group AFTER

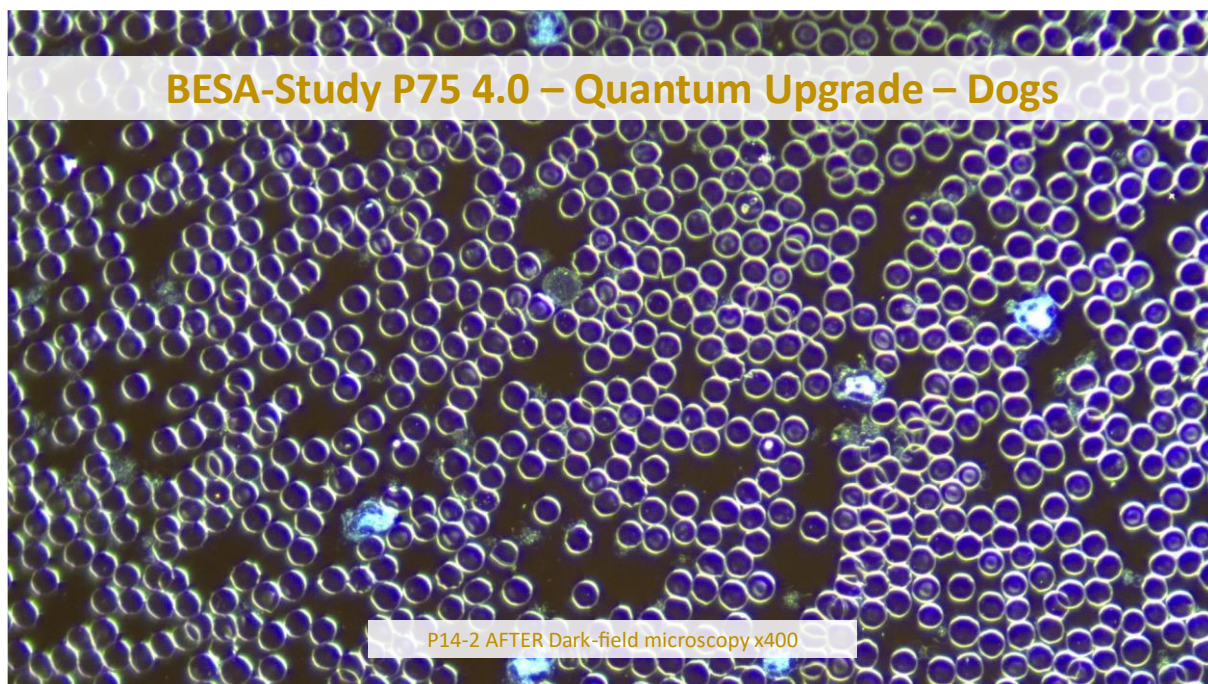
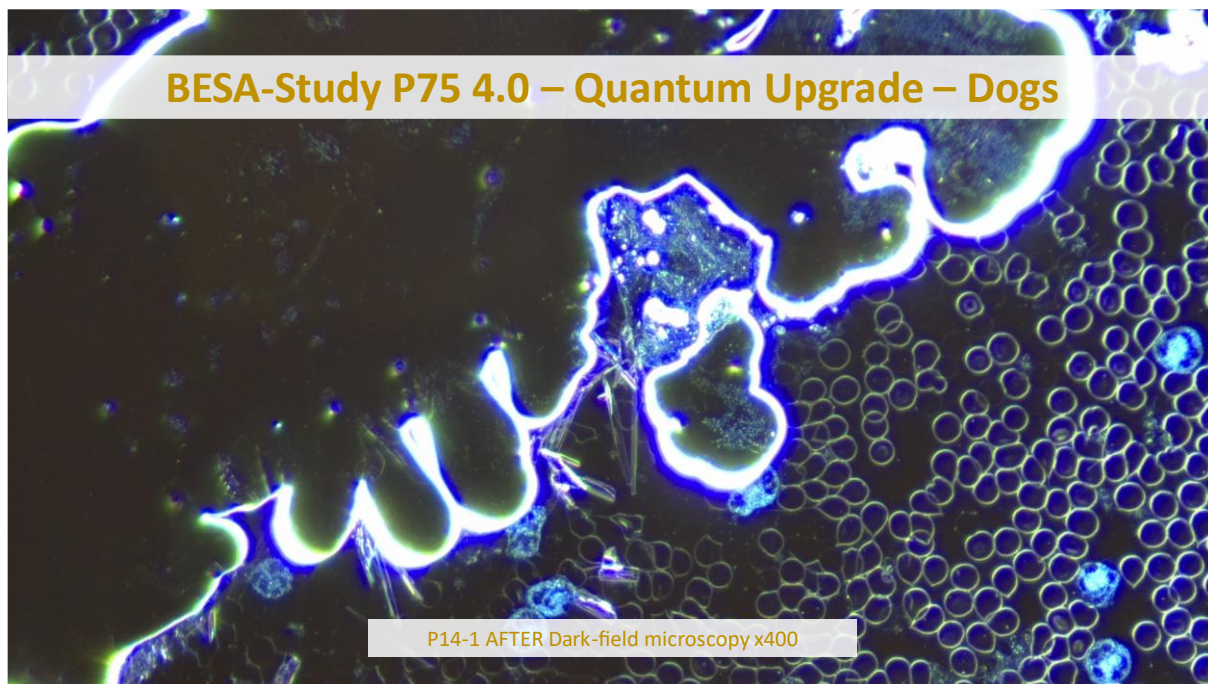
The following FIGURES 1-3 BELOW show an extract of the blood condition of the test person after the microscopy AFTER and WITHOUT the confrontation of the test person with the test object.

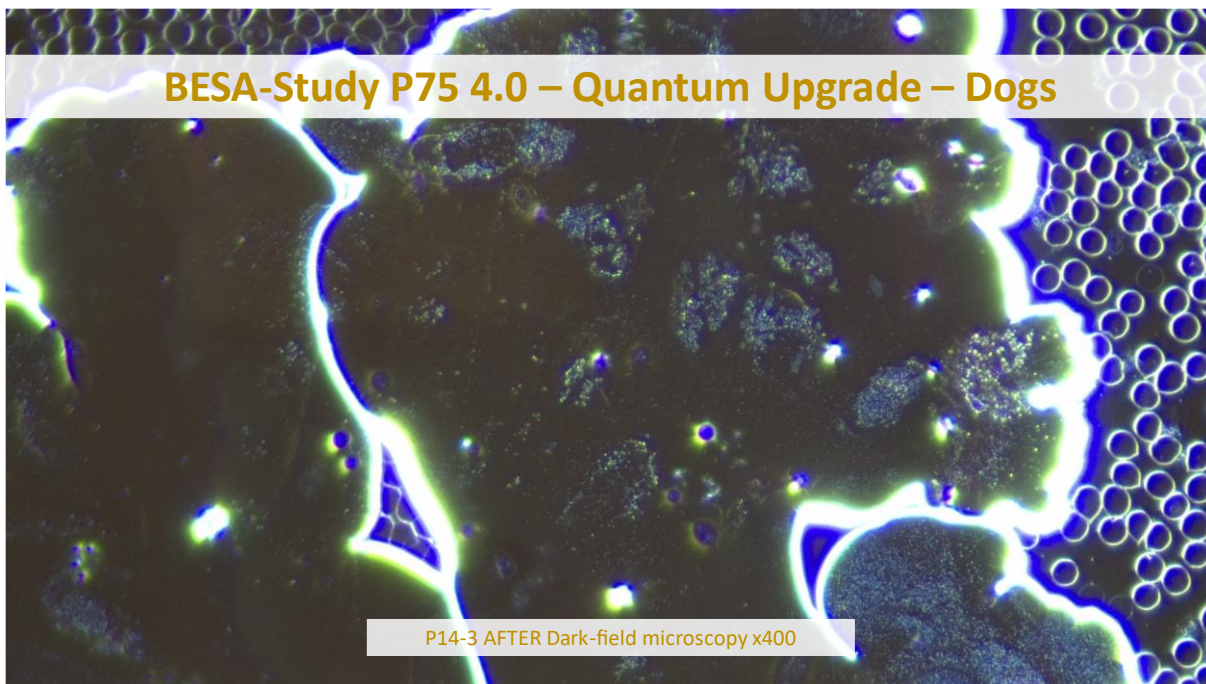
The AFTER microscopies were taken almost 4 weeks after the subject was confronted with the test object.



The images were again taken a few minutes after the blood sample was taken. All 3 images clearly show that the stressful, sometimes highly pathogenic factors from the BEFORE microscopies are still largely present.

The same contamination can be recognised at the same time of comparison as the microscopy BEFORE.

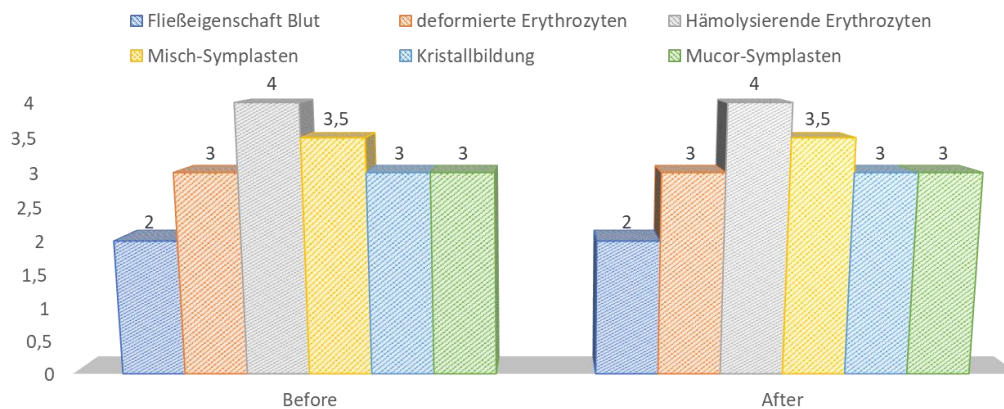




Status of health AFTER: unchanged

See also project description P75 4.1.3 or personal feedback form of test person P14.

BEFORE-AFTER OVERVIEW



	Before	After
Fließeigenschaft Blut	2	2
deformierte Erythrozyten	3	3
Hämolysierende Erythrozyten	4	4
Misch-Symplasten	3,5	3,5
Kristallbildung	3	3
Mucor-Symplasten	3	3



Subject 15 FKS Control group BEFORE

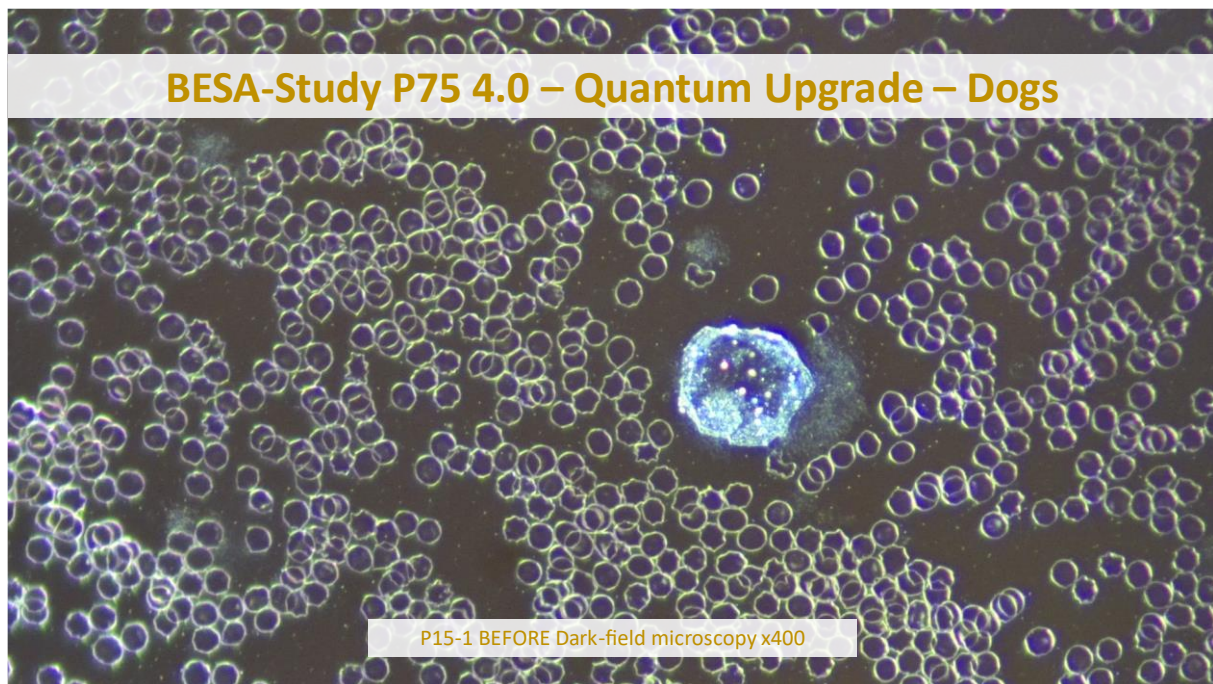
Female: Flocke, Labrador
Date of birth: 31/08/2014
Body weight: 20kg

Status of health:

- No significant health challenges
- certain sadness adopted from pet ownership

FIGS. 1 to 2 BELOW show an extract of the blood condition of the subject after microscopy.

Clearly visible in all images are cogwheel cells, paired cells and haemolysing erythrocytes (indication of traces of spike proteins). In FIGURE 1 BELOW, an Aspergillus symplast is clearly visible.

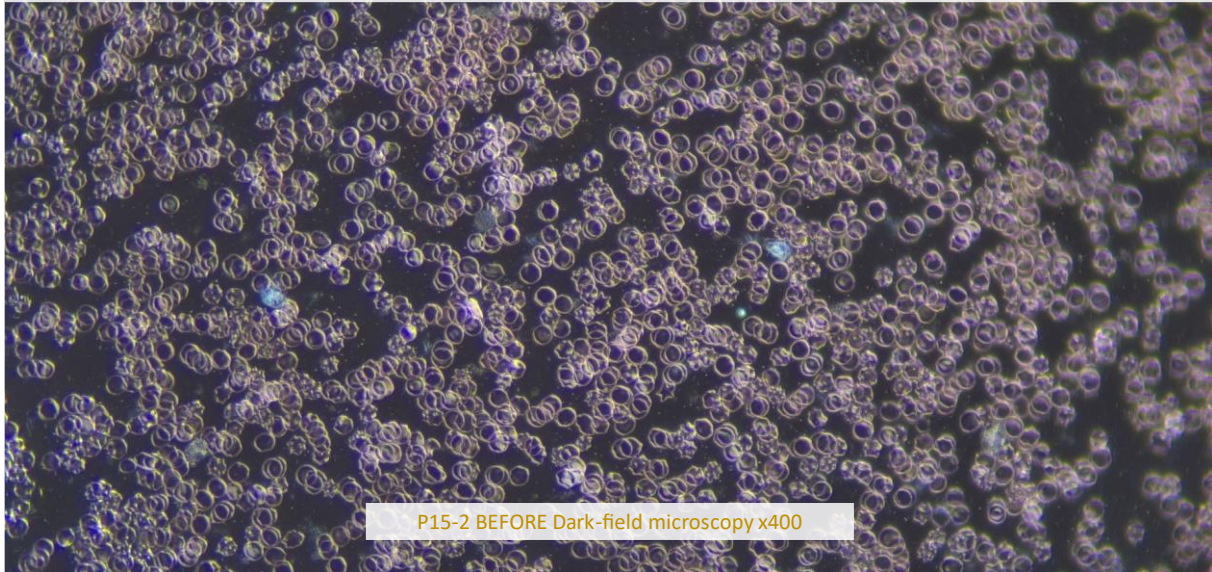


Haemolysing erythrocytes can be seen in FIGURE 2 BOTTOM, paired with vacuole formation in erythrocytes and agglutination of the erythrocytes (oxidative stress, over-rejection, mucor type).

Pair cells and the agglutination of the erythrocytes are clearly visible in the BOTTOM CENTRE of the FIGURE. In addition, FIGURE 2 BOTTOM shows strong symproteite filling within the erythrocytes.



BESA-Study P75 4.0 – Quantum Upgrade – Dogs

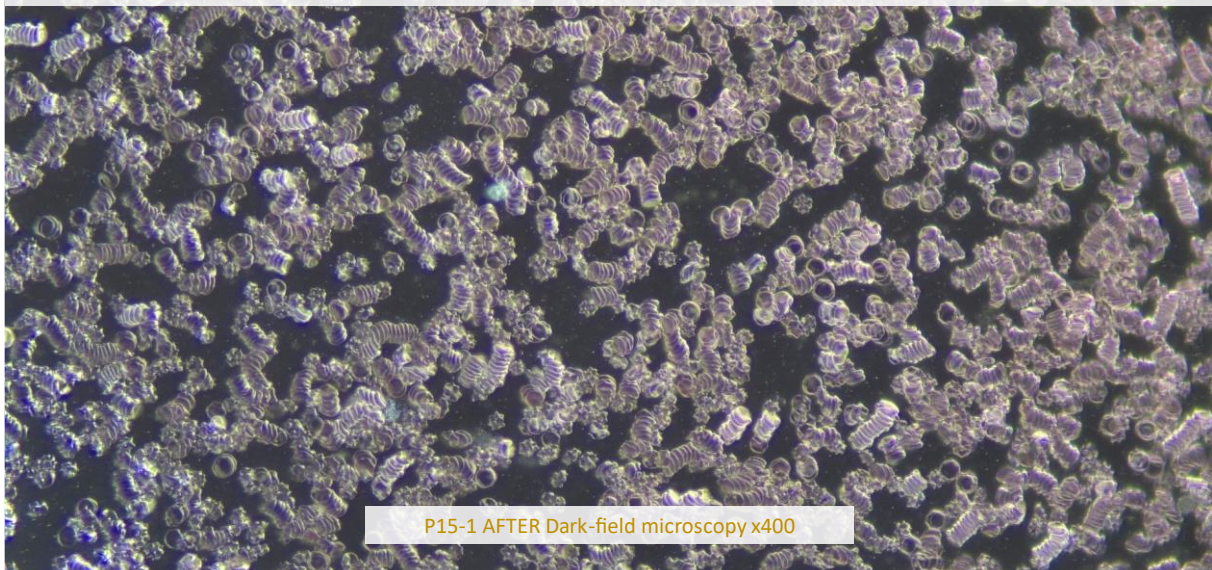


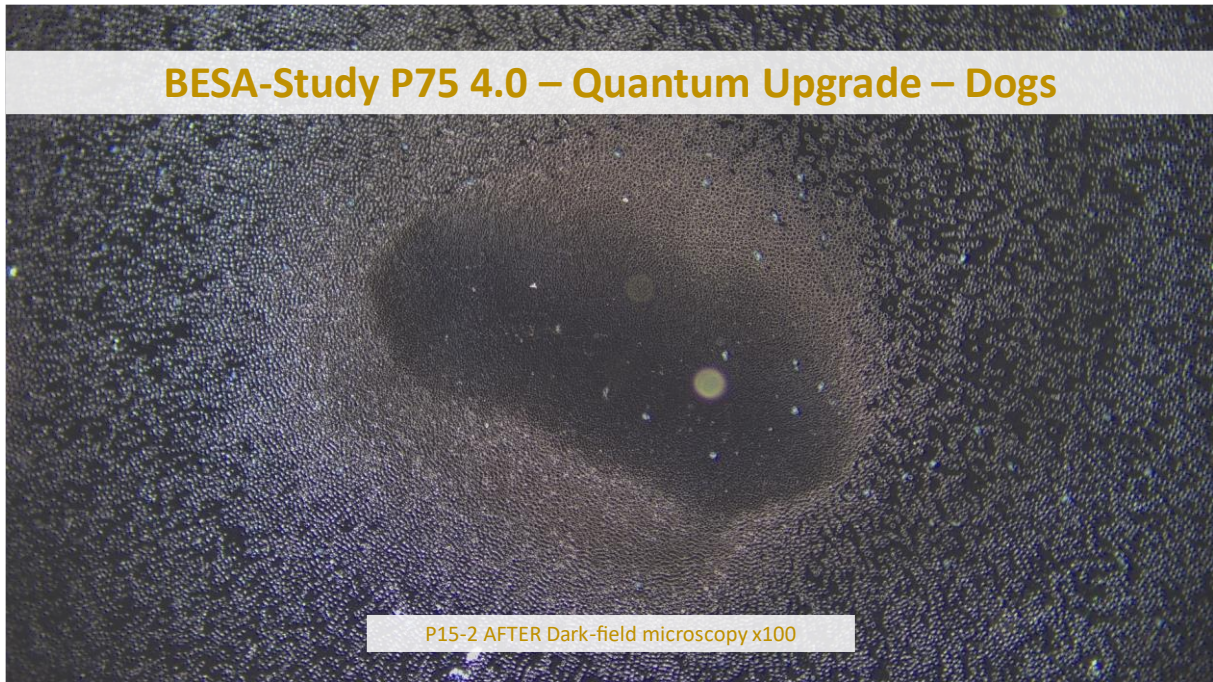
Subject 15 FKS Control group AFTER

The following PICTURES 1-2 BELOW show an extract of the subject's blood condition after microscopy and WITHOUT confrontation of the subject with the test object.

The AFTER microscopies took place almost 8 weeks after the BEFORE microscopy.

BESA-Study P75 4.0 – Quantum Upgrade – Dogs



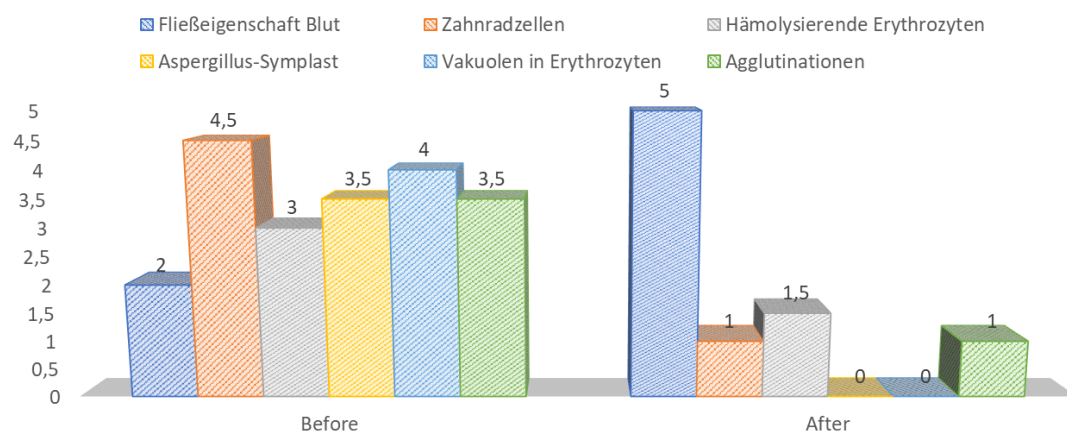


The images were again taken a few minutes after the blood sample was taken. Both images show that the harmful, sometimes highly pathogenic factors from the BEFORE microscopy are still largely present.

Status of health AFTER: unchanged

See in particular the measured values of the BESA individual tests in the project description P75 1.3 and the feedback form of the animal owner for test subject 15.

BEFORE-AFTER OVERVIEW



	Before	After
Fließeigenschaft Blut	2	5
Zahnradzellen	4,5	1
Hämolysierende Erythrozyten	3	1,5
Aspergillus-Symplast	3,5	0
Vakuolen in Erythrozyten	4	0
Agglutinationen	3,5	1



Subject 15 FKS

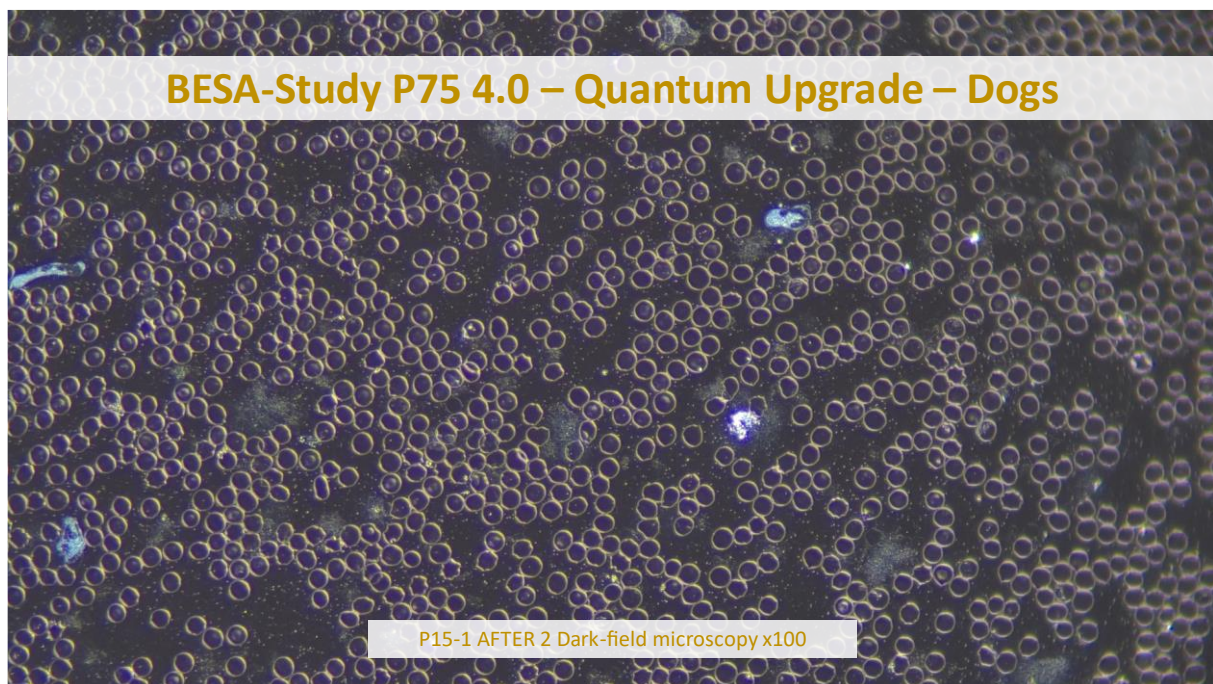
Control group AFTER 2 + TO

The following FIGURES 1-3 BELOW again show an extract of the subject's blood condition after microscopy of the subject's vital blood.

The AFTER microscopy 2 was performed after the test person from the control group, whose project was thus completed, was also consciously confronted with the test object.

The AFTER 2 microscopies again took place almost 4 weeks after the AFTER microscopies of the control group.

The images were again taken a few minutes after the blood sample was taken.



The AFTER microscopy of the vital blood shows significant changes in the morphology in the morphological state of the vital blood.

The images were again taken a few minutes after the blood sample was taken. All 3 images show that the stressful, sometimes highly pathogenic factors from the BEFORE microscopy from the BEFORE microscopies in the AFTER 2 microscopies largely harmonised (transformed or harmonised (transformed or converted)).

The erythrocytes show a marvellous shape and characteristics.

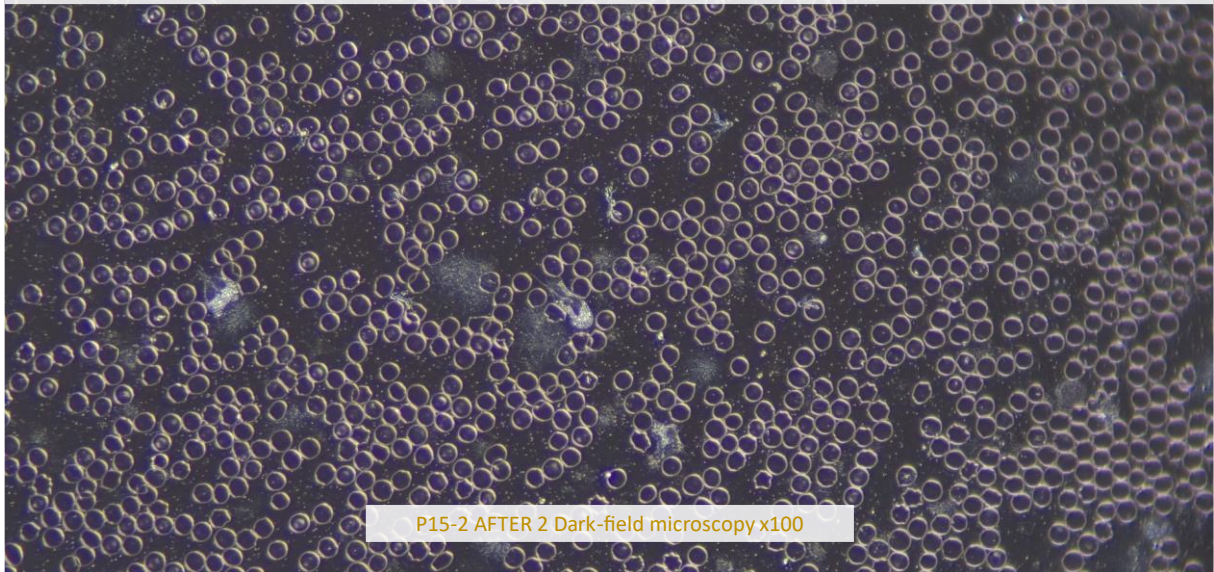
At the same time of comparison as the microscopy BEFORE, there are no liver islands present.

The strongly haemolysing erythrocytes (ghosts or shadow cells) have also largely dissolved. largely dissolved.

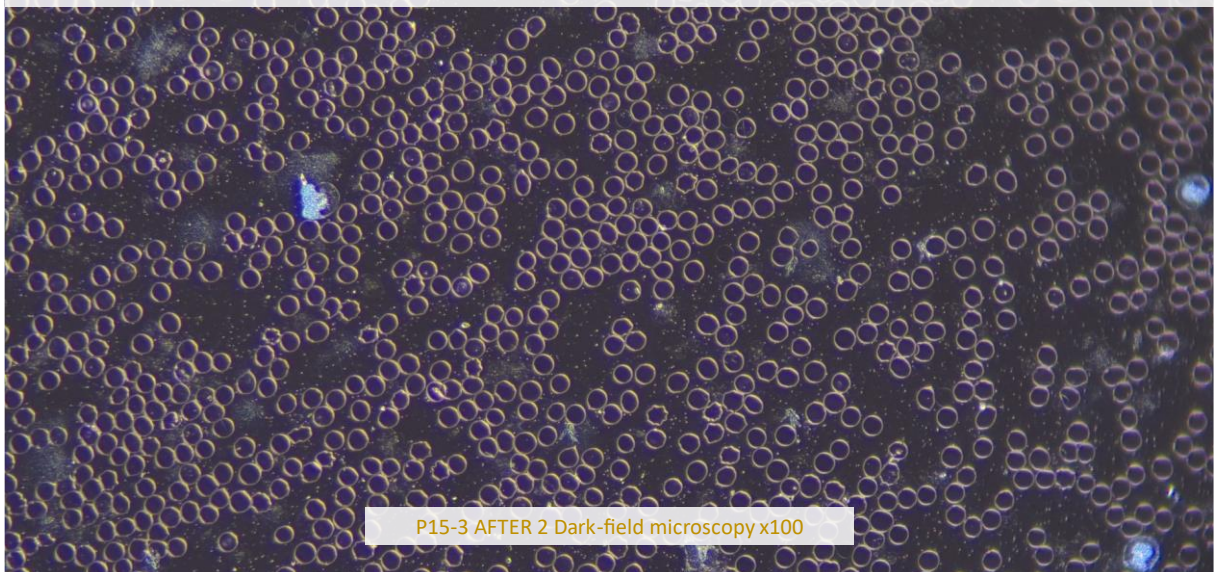
The white blood cells are also regular and dynamic.



BESA-Study P75 4.0 – Quantum Upgrade – Dogs



BESA-Study P75 4.0 – Quantum Upgrade – Dogs



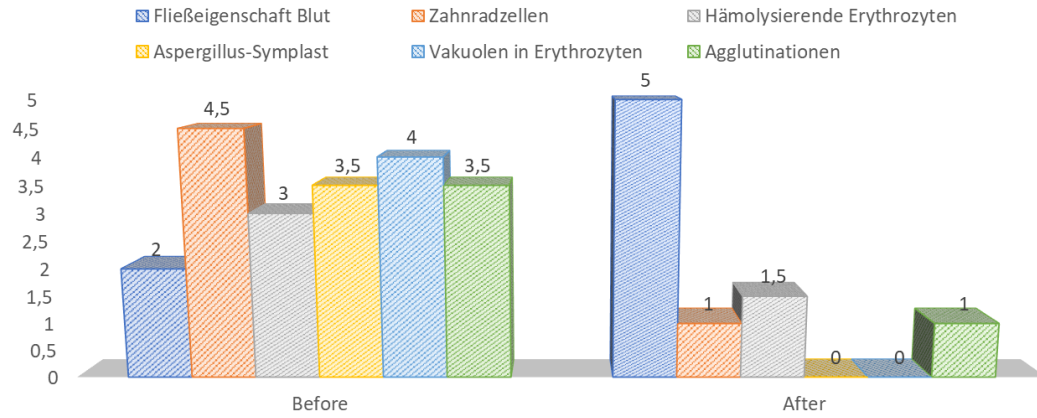
Status of health AFTER:

The dog appears more lively and cognitive, the sadness has vanished

See also the measured values of the BESA individual tests in the project description P75 1.3 and the pet owner's feedback form for test subject 15.



BEFORE-AFTER OVERVIEW



	Before	After
Fließeigenschaft Blut	2	5
Zahnradzellen	4,5	1
Hämolysierende Erythrozyten	3	1,5
Aspergillus-Symplast	3,5	0
Vakuolen in Erythrozyten	4	0
Agglutinationen	3,5	1



Subject 16 CYW

Control group BEFORE

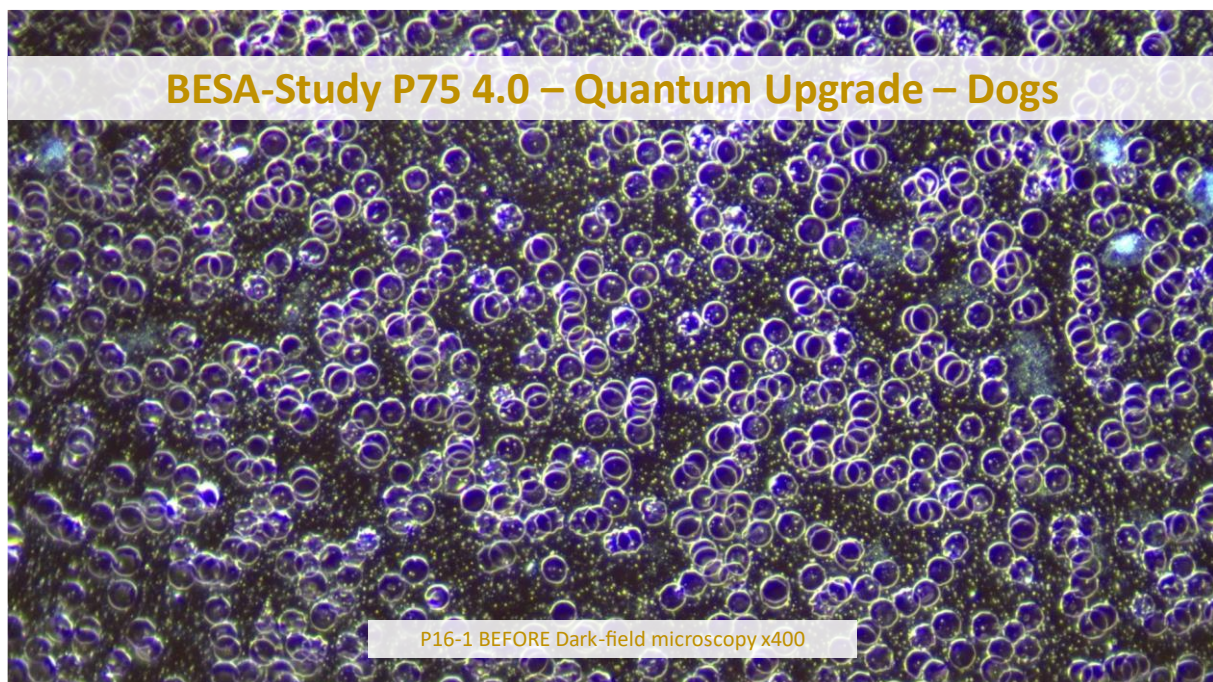
Female: Cora, Maltese
Date of birth: 17/08/2022
Body weight: approx. 5,3kg

Status of health:

- Heavily burdened with health problems
- Lack of energy
- Severe coordination disorders
- severe recurrent ear infection with bleeding - with adhesions in the ear
- Recurrent accumulation of fluid in the chest/chest cavity, had to be regularly drained through a valve under anaesthetic
- had to be regularly aspirated through a valve under anaesthesia => caused by borrelia (BESA)
- Pain
- Blood collection difficult
- seems barely able to survive.

FIGS. 1 - 3 BELOW show an extract of the subject's blood condition after microscopy, i.e. BEFORE the subject was confronted with the test object.

A strong development of symprotite (snow flurries - acute allergies or inflammations) is clearly visible in all images. In FIGS. 1 and 3, pair cells (kidney load) and money rolls (indication of hyperacidity, over-rejection and strong influence of electromagnetic interference fields) as well as vacuoles in the erythrocytes and parasitic load, particularly visible in FIG. 3.



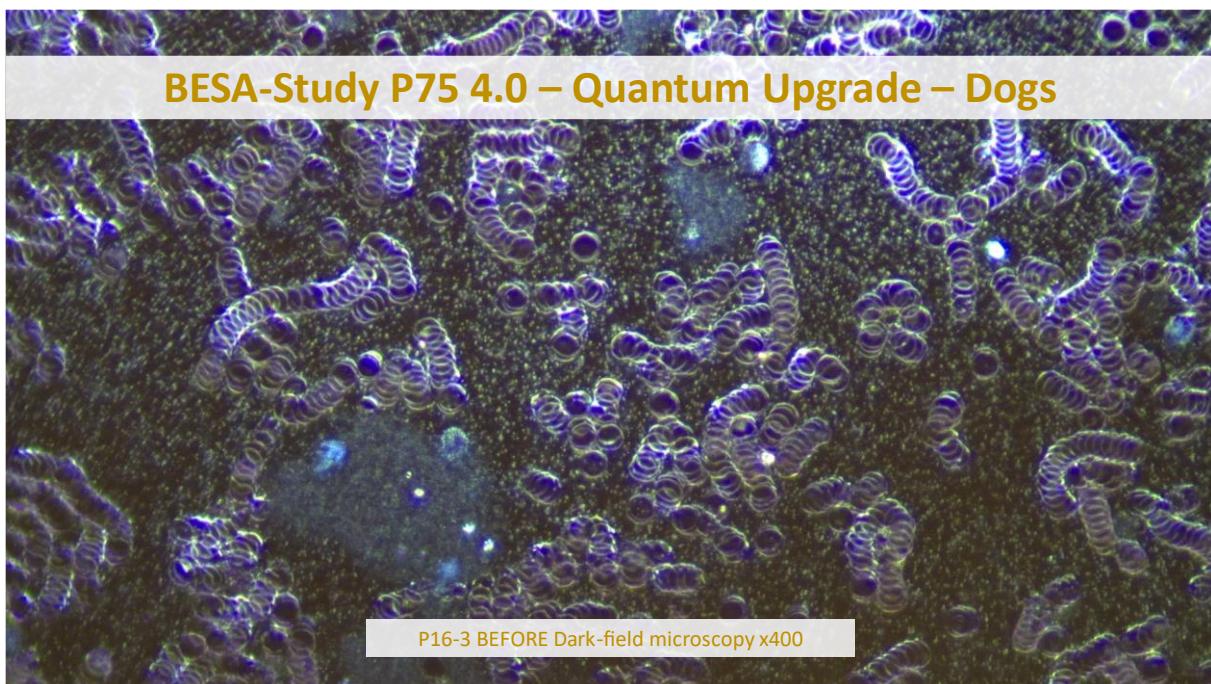
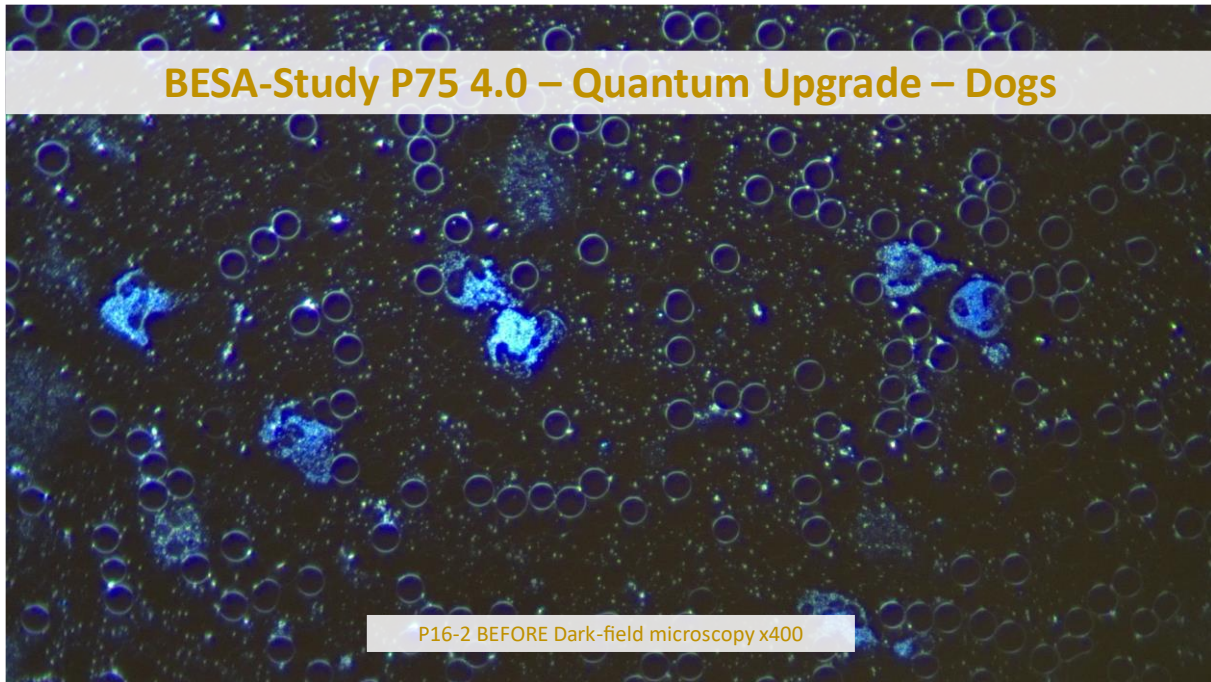


FIGURE 2 shows deformed erythrocytes and ghost cells or haemolysing erythrocytes. They are an indication of the effect of stressful spike proteins.

They promote the decay process of erythrocytes and white blood cells and also destroy the blood environment.

Subject 16 CYW

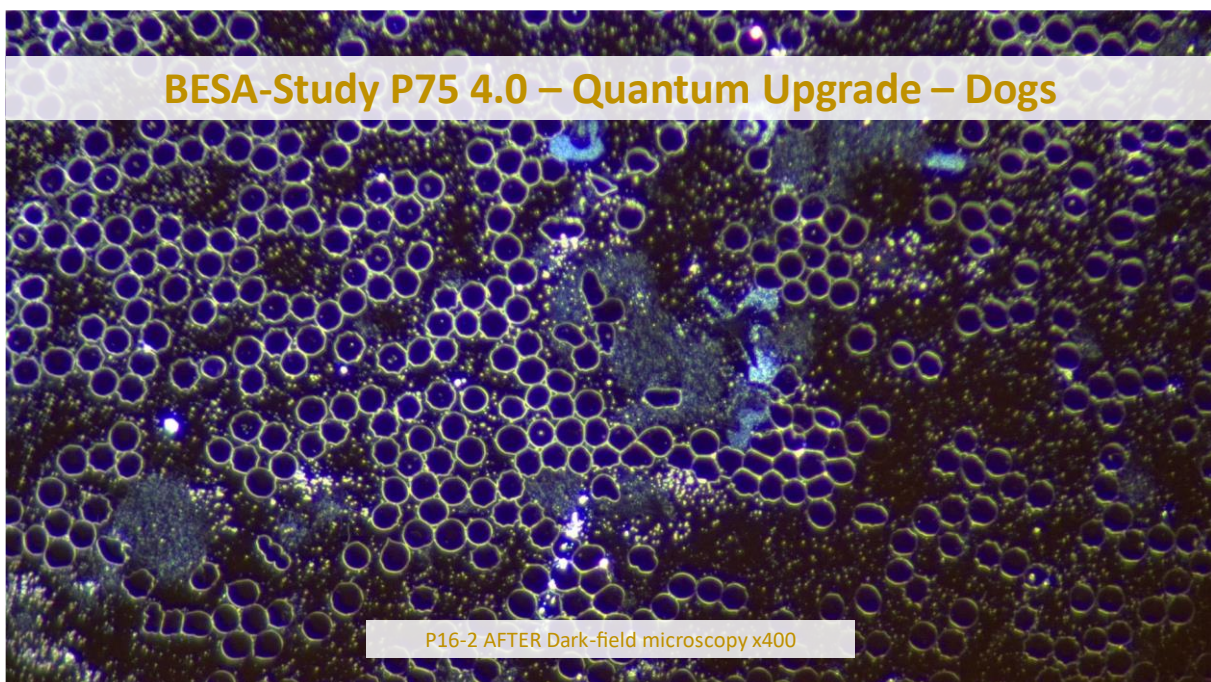
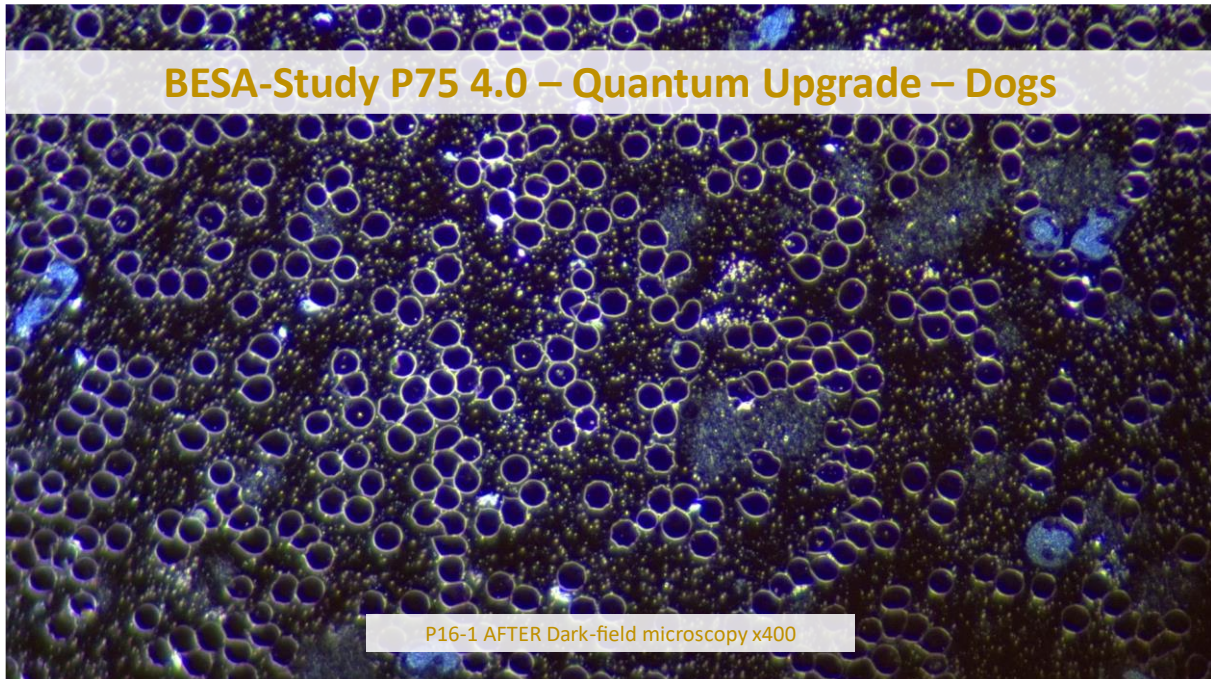
Control group AFTER



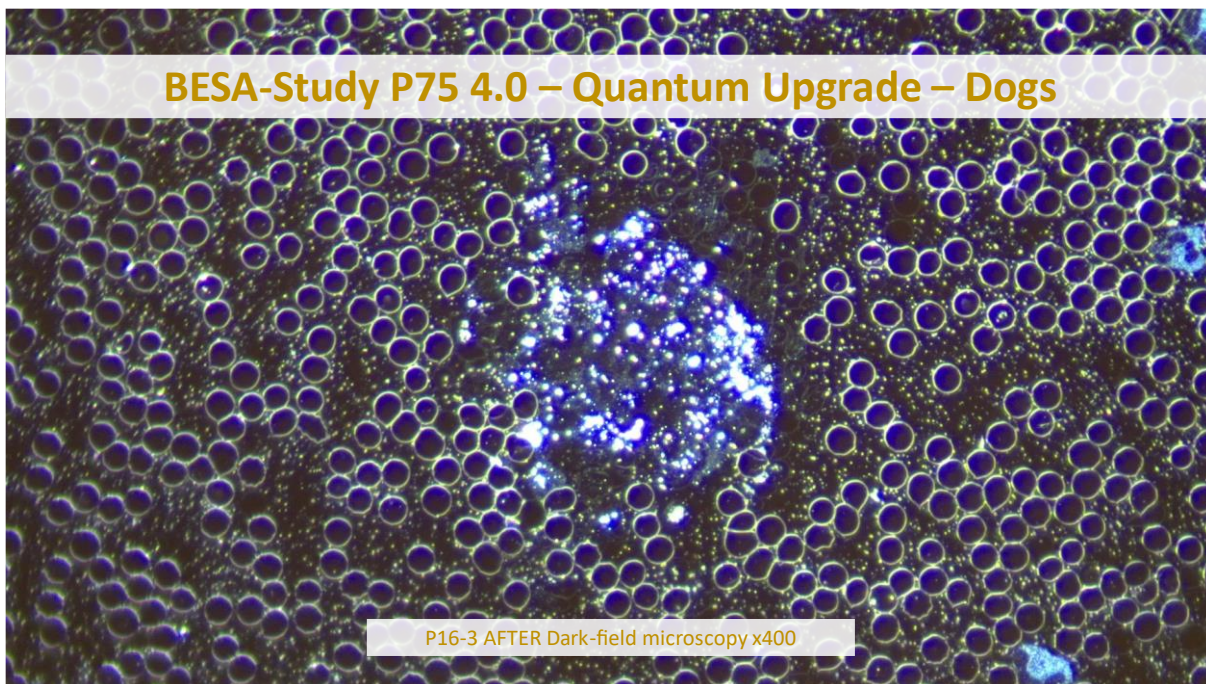
The following FIGURES 1-3 BELOW show an extract of the subject's blood condition after microscopy and WITHOUT confrontation of the subject with the test object.

The AFTER microscopies were taken almost 8 weeks after the BEFORE microscopy.

Like the images of the microscopies BEFORE, all the IMAGES show massive spermites or snow flurries as an indication of inflammation or allergies.



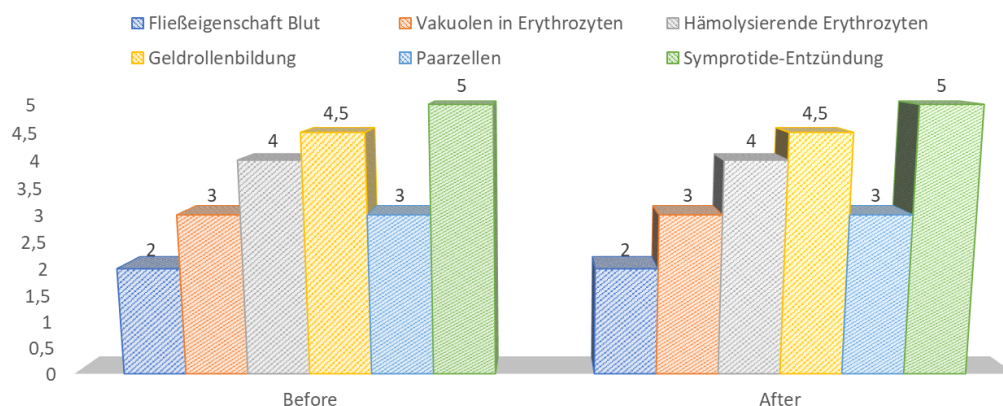
The fungal development (mucoïd fungal structure) can also be seen very clearly in all the images. All in all, we can still assume a highly pathogenic blood picture.



Status of health AFTER:

- brief improvement of all symptoms - then increase in symptoms again!
- ... still lacking in energy
- severe coordinative disorders
- still severe, recurrent ear infection, with adhesions in the ear
- recurrent fluid accumulation in the chest/chest cavity, still has to be aspirated through a valve under anaesthetic => borrelia => tested with BESA and in DF (inflammatory processes, parasites)
- Pain, seems barely able to survive, blood collection always difficult

BEFORE-AFTER OVERVIEW



	Before	After
Fließeigenschaft Blut	2	2
Vakuolen in Erythrozyten	3	3
Hämolysierende Erythrozyten	4	4
Geldrollenbildung	4,5	4,5
Paarzellen	3	3
Symptotide-Entzündung	5	5



Subject 16 CYW

Control group AFTER 2 + TO

The following PICTURES 1-3 BELOW again show an extract of the subject's blood condition after microscopy of the subject's vital blood.

The AFTER 2 microscopy was carried out after the test subject from the control group, whose project was thus completed, was also consciously confronted with the test object in order to analyse the extent to which the effect of the test object could have an influence on the bitch's severe symptoms.

The AFTER 2 microscopies again took place almost 4 weeks after the AFTER microscopies of the control group.

The images were again taken a few minutes after the blood sample was taken.

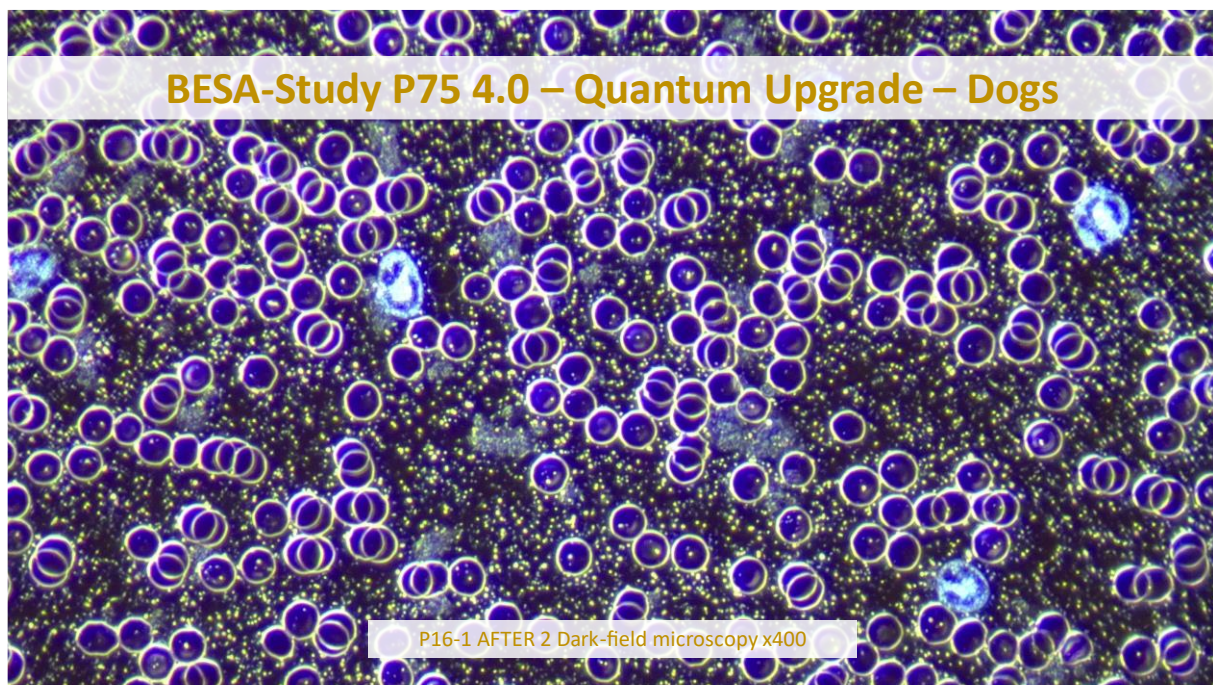
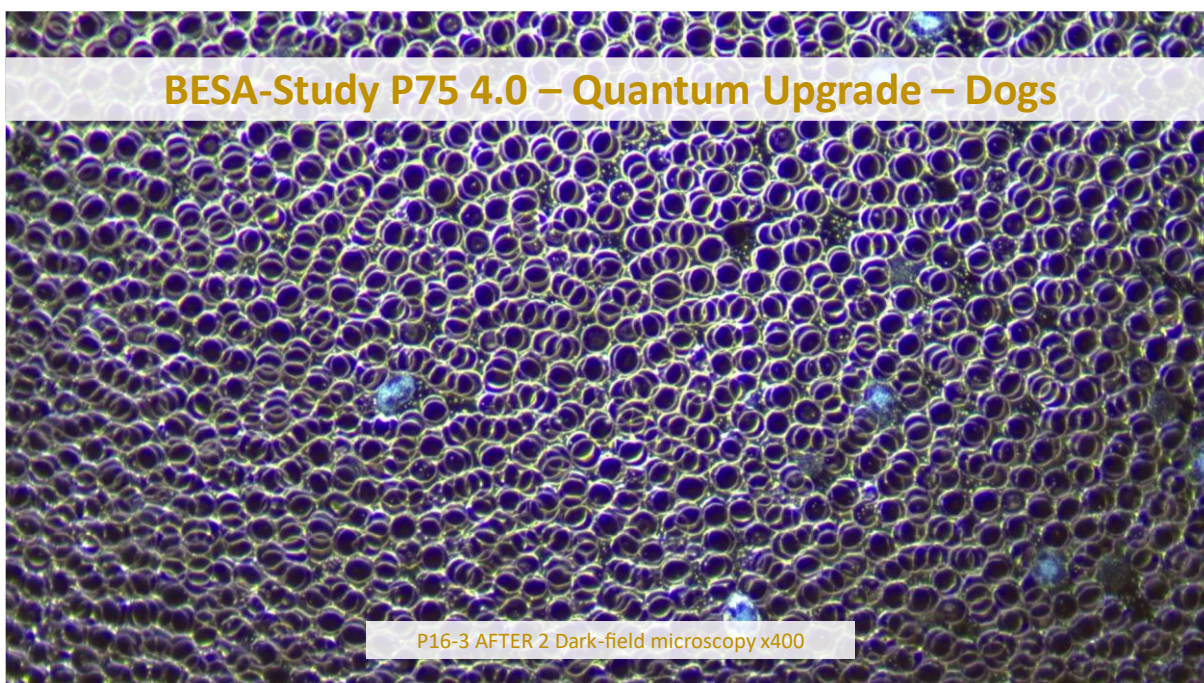
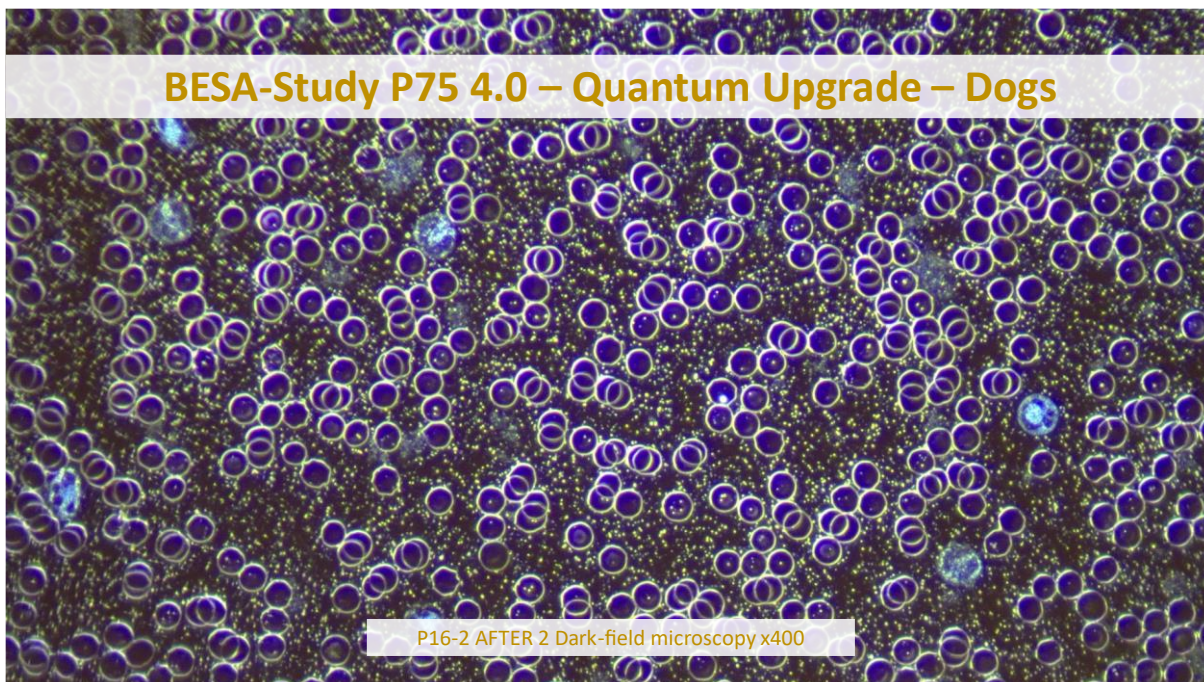


FIGURE 1 ABOVE as well as FIGURE 2 BELOW still show massive spermites (snow flurries) as an indication of persisting inflammation or allergies.

The deformed erythrocytes and shadow cells (ghosts) or haemolysing erythrocytes have been greatly reduced. It can be seen that the effect of the test object on the blood environment had a significant positive effect. The decomposition process of red and white blood cells was clearly reduced. The dissolution of fungal structures and all the pathogens still visible in the BEFORE microscopies could be regulated in the sense of bacterial cyclogeny.

It can be assumed that the blood values will continue to improve if the test object is used upright. In FIGURE 3 BELOW, on the other hand, the snow flurry appears to have already dissipated. All in all, one can recognise a significant development of the previously highly pathogenic blood count into an apathogenic development.



Symptoms - status of health:

4-5 weeks later Symptome

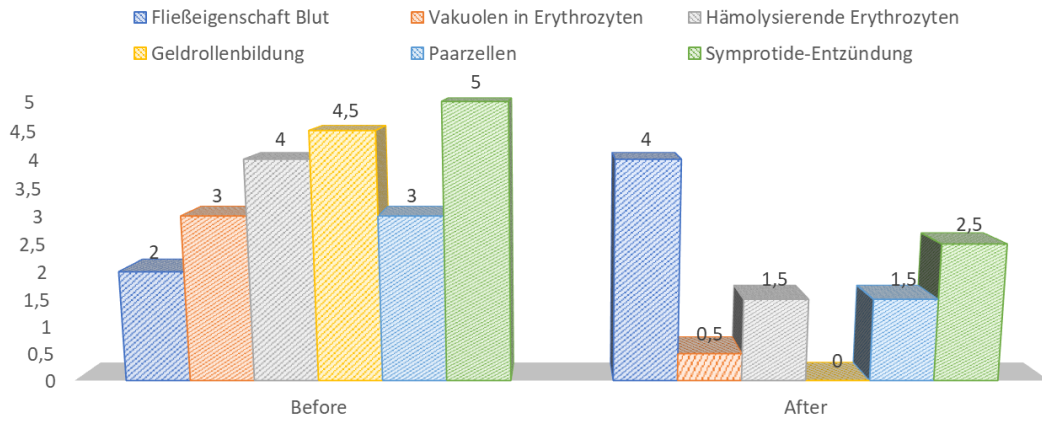
- improvement of all symptoms again!!!
- bitch is more lively again, currently no coordinative/cognitive disorders
- on the contrary,- reacts very sensitively to her surroundings, especially to her owner
- recurrent ear infection much better, blood from the ears only rarely anymore
- currently no recurring fluid accumulation in the chest/chest cavity, nothing needs to be aspirated at the moment
- about the pain: no trembling in the body - currently pain-free? Definitely much better
- Blood collection well behaved
- the bitch cognitively gives the impression that things are looking up



– similar to her owner, she has also lost weight

See also the BESA individual tests in sub-study P75 4.1.3 under subject P16 and the feedback from the pet owner.

BEFORE-AFTER OVERVIEW



	Before	After
Fließeigenschaft Blut	2	4
Vakuolen in Erythrozyten	3	0,5
Hämolysierende Erythrozyten	4	1,5
Geldrollenbildung	4,5	0
Paarzellen	3	1,5
Symprotide-Entzündung	5	2,5





Subject 17 PFC Control group BEFORE

Female: Paco, Golden Doodle
Date of birth: 01/08/2017
Body weight: 46kg

Status of health:

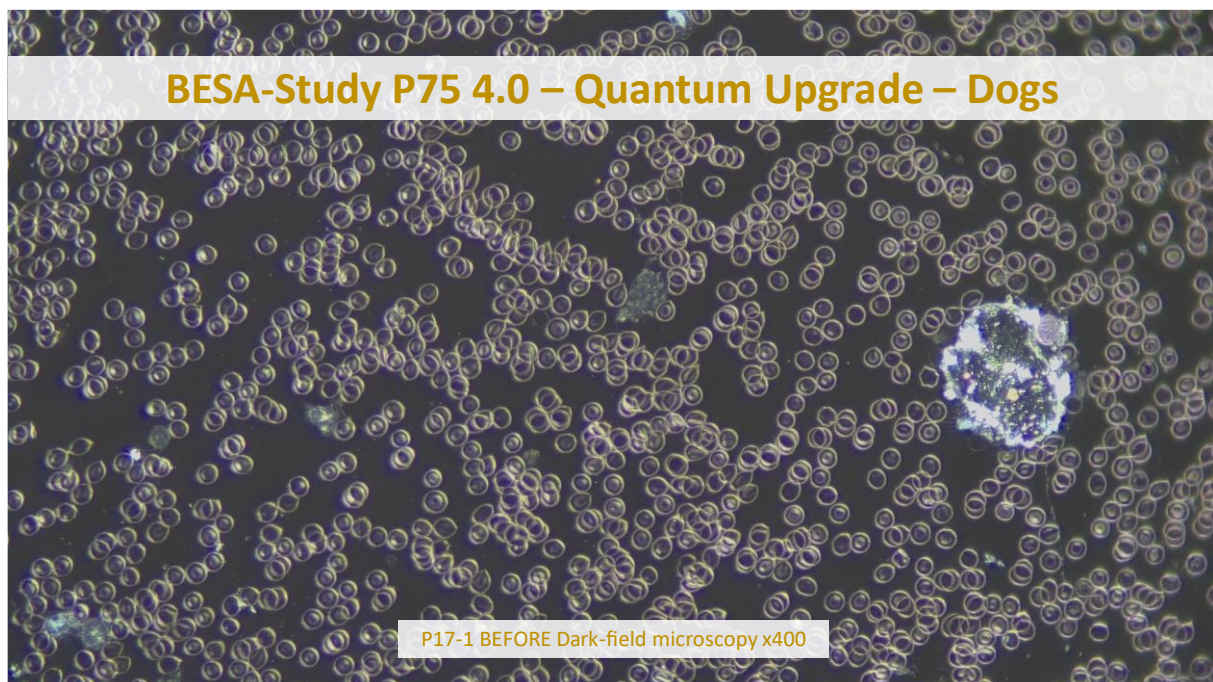
- no significant health challenges
- slightly overweight

FIGS. 1 to 3 BELOW show an extract of the subject's blood condition after microscopy, i.e. BEFORE the subject was confronted with the test object.

FIGURE 1 BOTTOM shows target cells (indication of oxygen deficiency or an increase in the cellular protein load, possibly toxin load) as well as lemon cells, which indicates a liver spleen weakness - Mucor type.

An Aspergillus symplast can be seen on the far right of FIGURE 1 BOTTOM, which supports the hypothesis of over-referral.

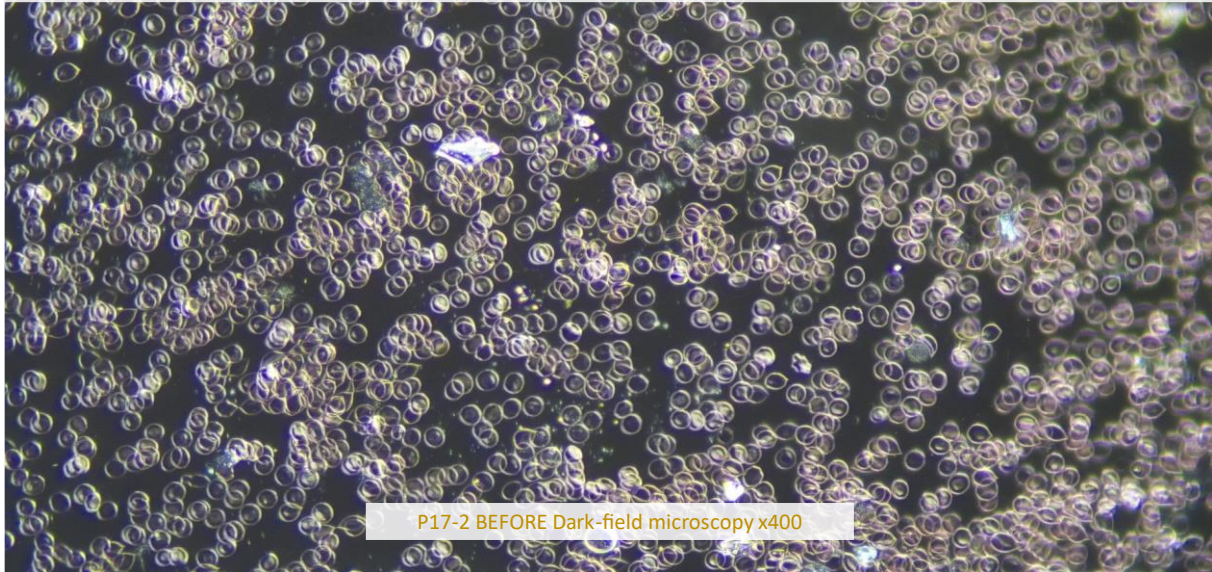
Furthermore, all IMAGES 1, 2 and 3 show slight to moderate agglutination with evidence of oxidative stress (internal stress, EMSF?) and over-referral (Mucor type). Some of these images already represent a highly pathogenic state.



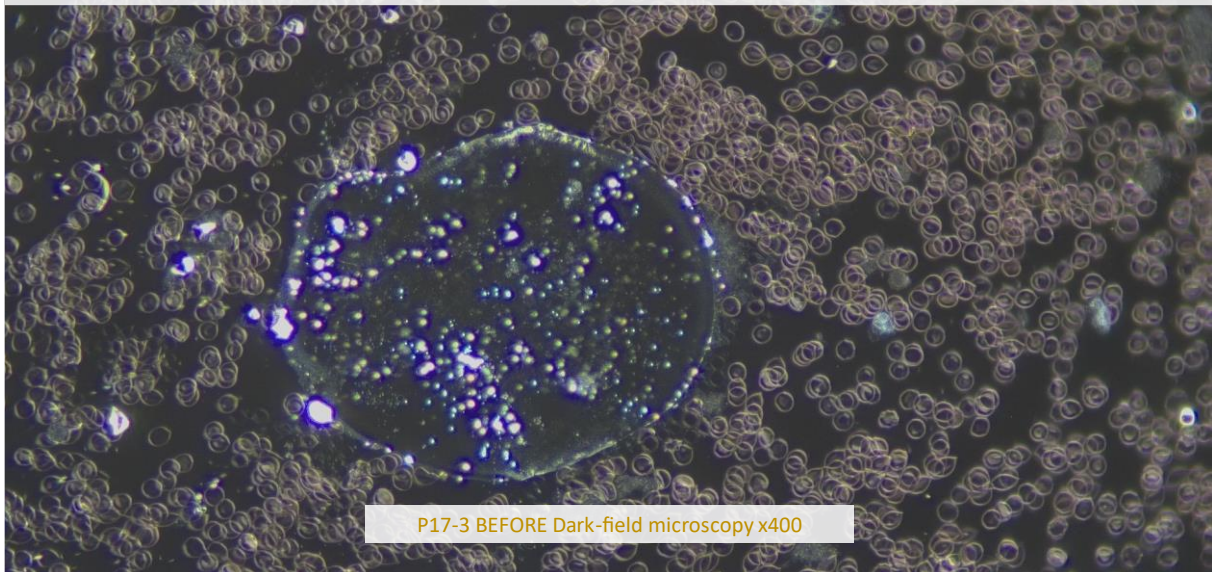
On FIGURE 3 BELOW you can see very nicely, a giant aspergillic symplast.



BESA-Study P75 4.0 – Quantum Upgrade – Dogs



BESA-Study P75 4.0 – Quantum Upgrade – Dogs



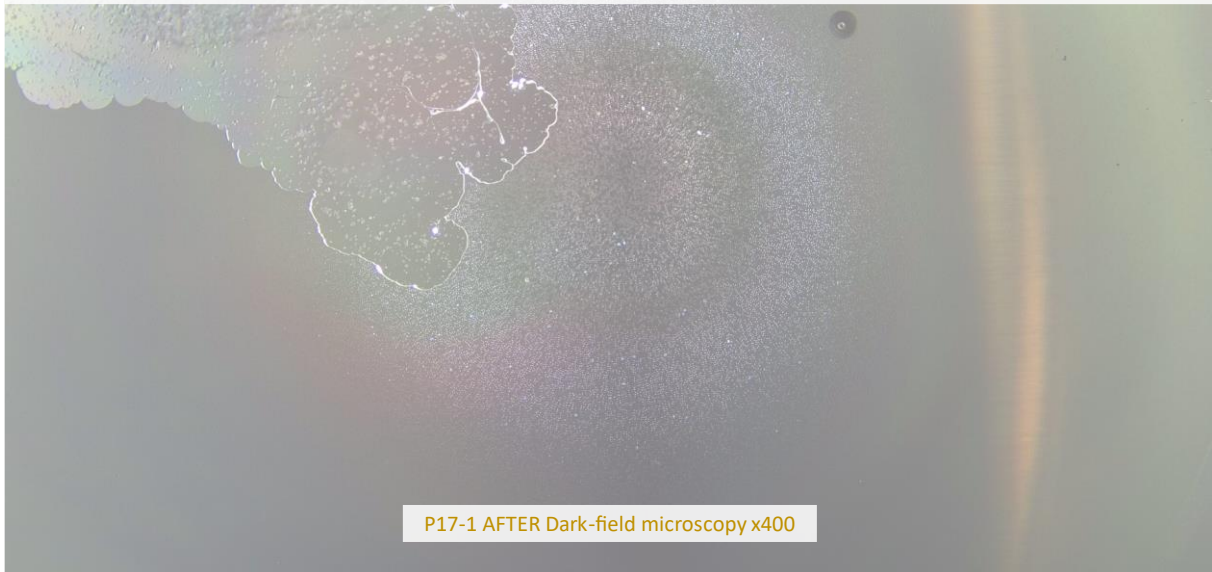
Subject 17 PFC **Control group AFTER**

The following FIGURES 1-3 BELOW show an extract of the subject's blood condition after microscopy and WITHOUT confrontation of the subject with the test object.

The AFTER microscopies took place almost 4 weeks after the BEFORE microscopies.

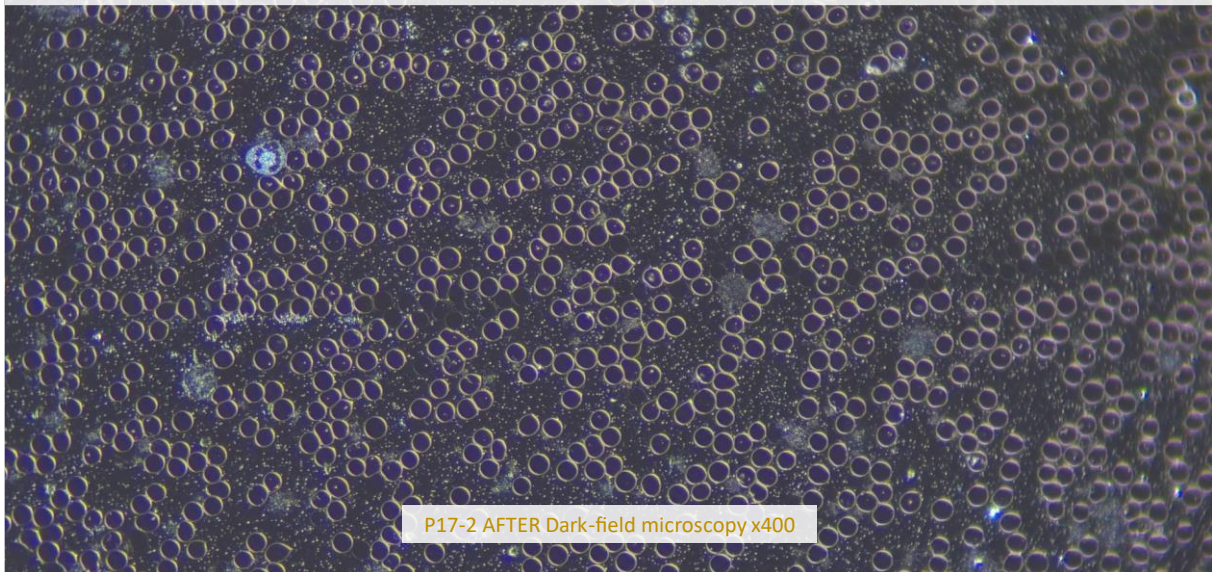


BESA-Study P75 4.0 – Quantum Upgrade – Dogs



P17-1 AFTER Dark-field microscopy x400

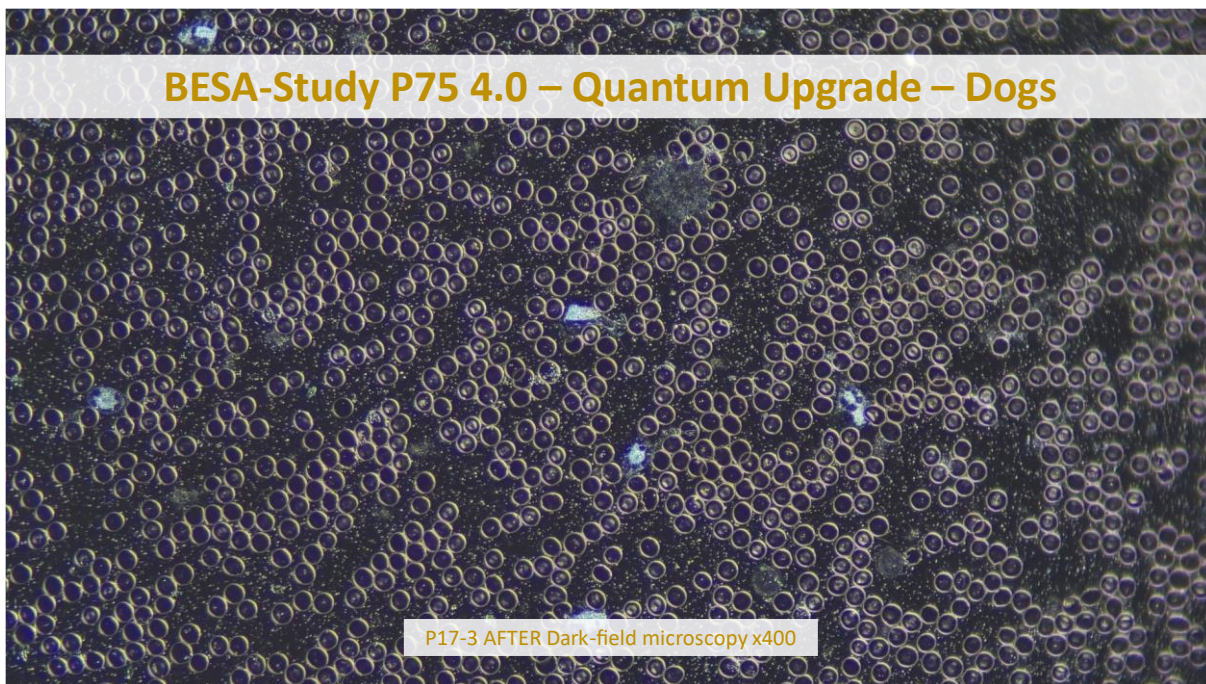
BESA-Study P75 4.0 – Quantum Upgrade – Dogs



P17-2 AFTER Dark-field microscopy x400

The images were again taken a few minutes after the blood sample was taken.

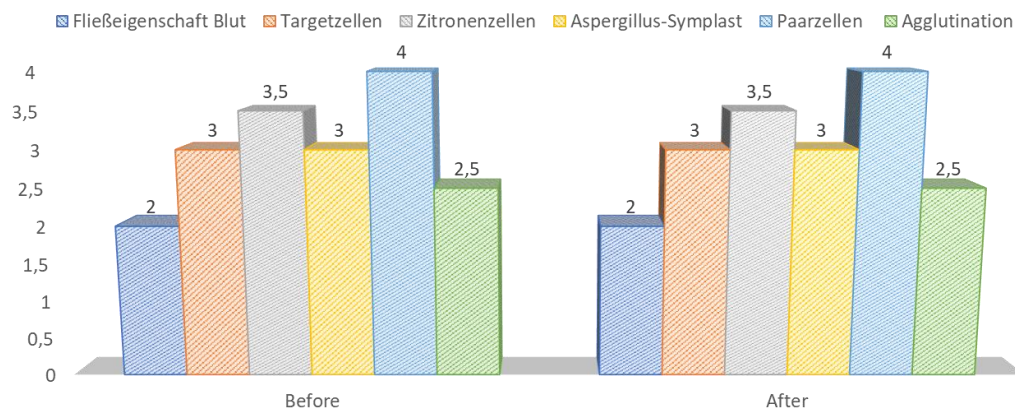
All 3 images show that the contaminating, sometimes highly pathogenic factors from the BEFORE microscopies are still largely present.



Status of health AFTER: unchanged

See also sub-study P75 4.1.3 under test subject P17 and the feedback from the animal owner.

BEFORE-AFTER OVERVIEW



	Before	After
Fließeigenschaft Blut	2	2
Targetzellen	3	3
Zitronenzellen	3,5	3,5
Aspergillus-Symplast	3	3
Paarzellen	4	4
Agglutination	2,5	2,5

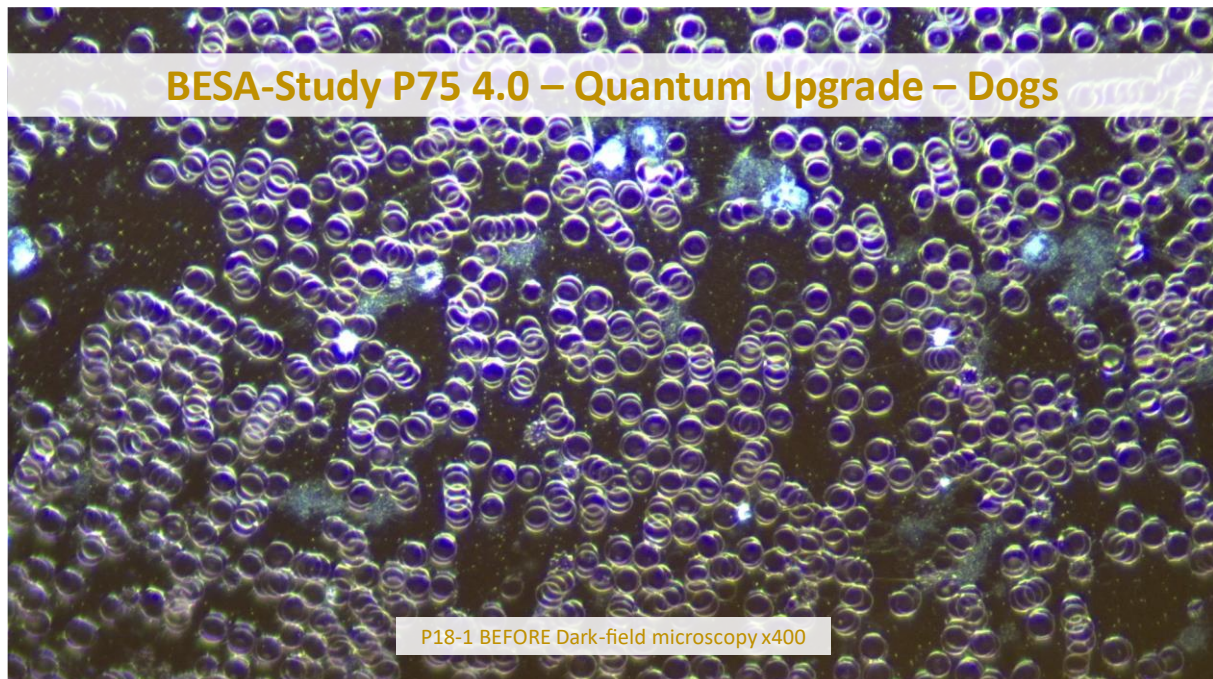


Subject 18 FEQ Control group BEFORE

Male-dog: Frimousse vom Tullnerbach, Hovawart
Date of birth: 10/02/2010
Body weight: 46kg

Status of health:

- Low energy
- Tired
- Joint problems (arthrosis)
- always mucous



Alle FIGS. 1 to 3 ABOVE and BELOW show an extract of the subject's blood condition after microscopy.

FIGURE 1 ABOVE shows paired cells (kidney stress) and slight agglutination (oxidative stress, over-rejection - Mucor type) as well as some cogwheel cells with vacuoles and thus clear evidence of consumption processes.

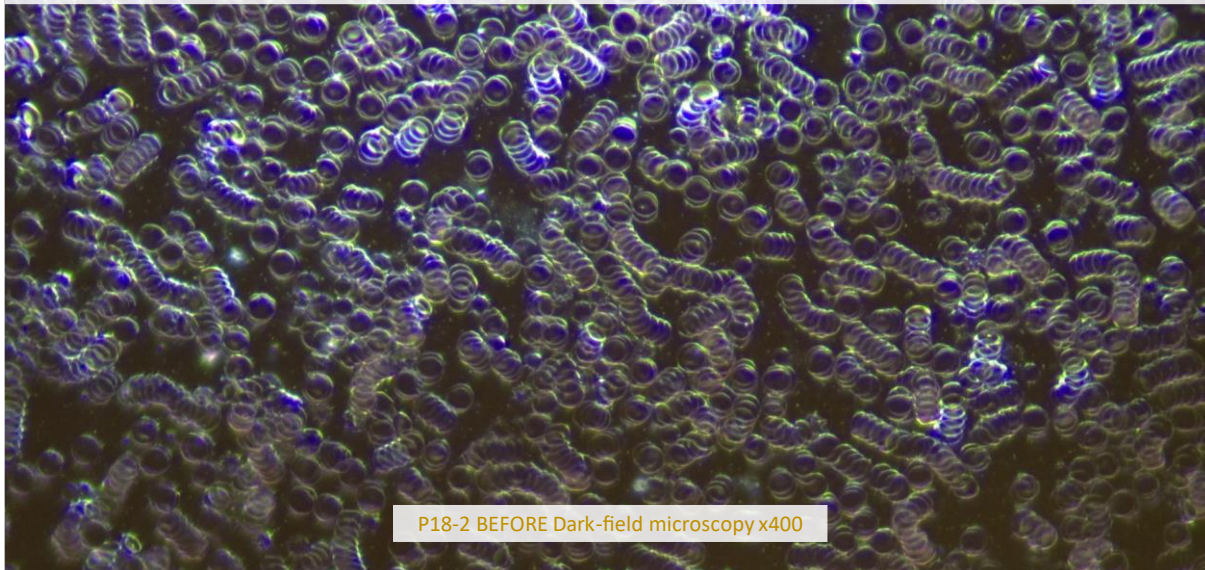
They indicate stressful spike proteins, which promote the decay process of erythrocytes and white blood cells.

In addition to the aspects already mentioned, FIGURE 3 BELOW shows some platelet symplasts (accumulation of platelets in conjunction with fibrin, calcium and oxidised cholesterol).

These symplasts can lead to serious stress in the blood vessels (thrombosis, stroke, infarction, etc.).

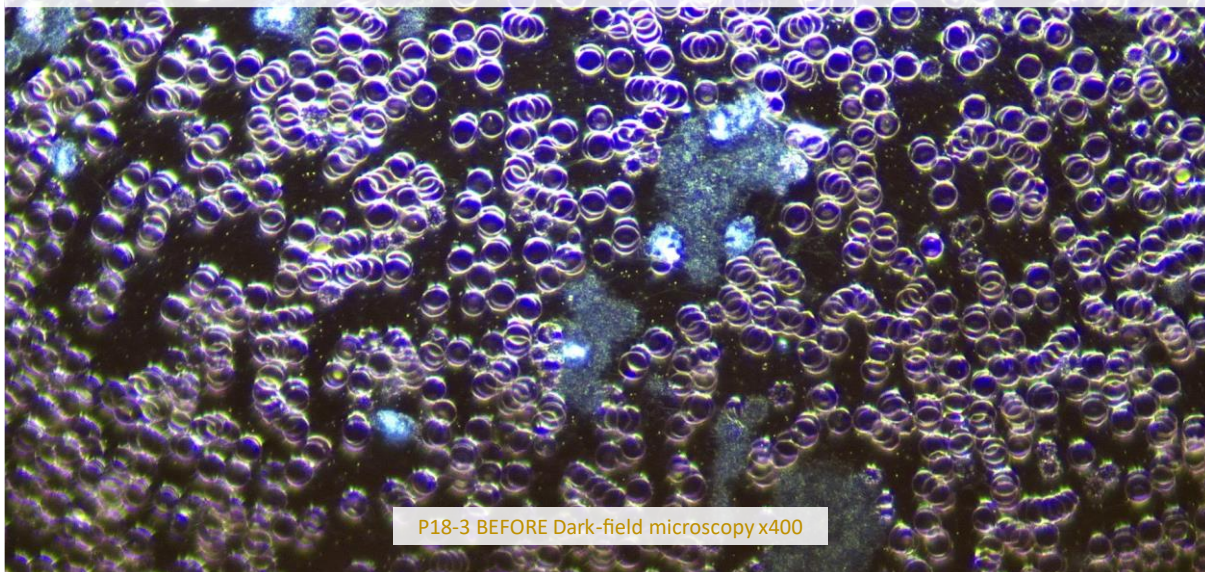


BESA-Projekt P75 4.0 – Quantum Upgrade – Hunde



P18-2 BEFORE Dark-field microscopy x400

BESA-Study P75 4.0 – Quantum Upgrade – Dogs

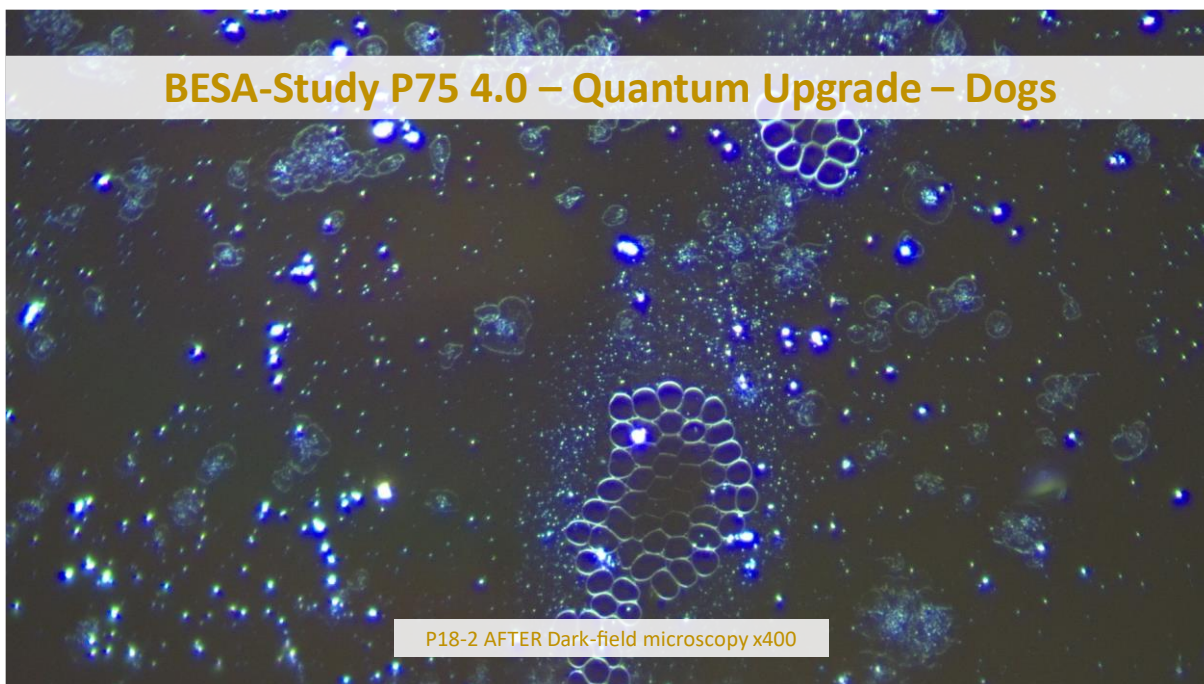
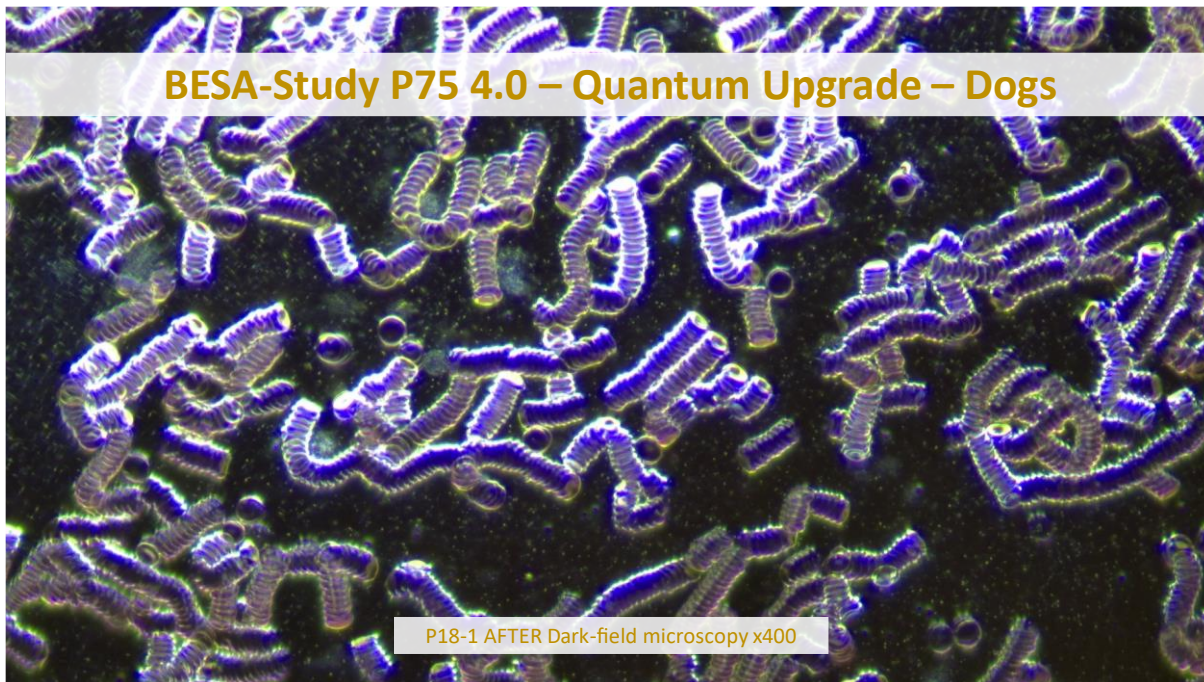


P18-3 BEFORE Dark-field microscopy x400

Subject 18 FEQ Control group AFTER

Die The following PICTURES 1-3 BELOW show an extract of the subject's blood condition after microscopy of the subject's vital blood.

The AFTER microscopies were taken almost 4 weeks after the BEFORE microscopies.
The images were again taken a few minutes after the blood sample was taken.



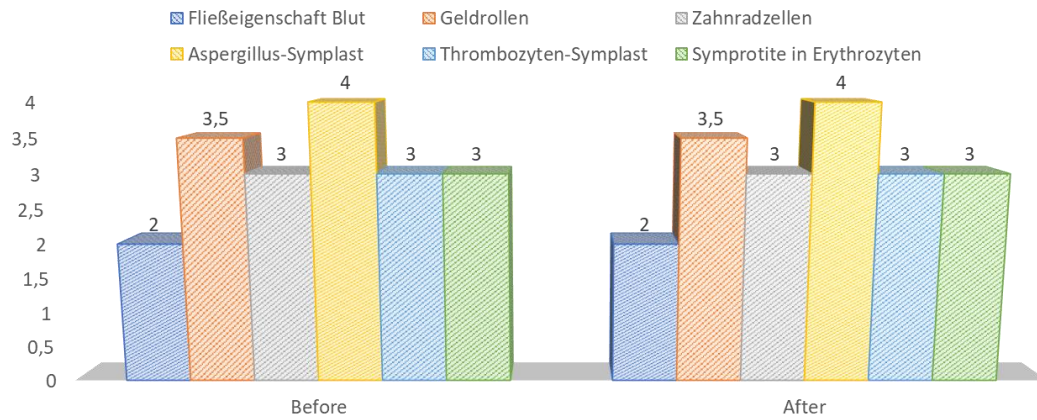
The AFTER microscopy of the vital blood shows no significant changes in the morphological in the morphological condition of the vital blood.

The state of health AFTER is unchanged compared to the state of health BEFORE.
before.

- no abnormalities
- everything unchanged



BEFORE-AFTER OVERVIEW



	Before	After
Fließeigenschaft Blut	2	2
Geldrollen	3,5	3,5
Zahnradzellen	3	3
Aspergillus-Symplast	4	4
Thrombozyten-Symplast	3	3
Symprotite in Erythrozyten	3	3



The result of an interdisciplinary perspective on the regulation of chronic stress in dogs

Effect of a quantum technology as a test object using bioenergy-informative system analysis – BESA

As part of this animal-dog study, we investigated the effect of a quantum technology on energy-informative behaviour (in the meridian system) on the health parameters of the animals as test subjects. With the help of bioenergy-informative system analysis (BESA for short), we investigated whether life-promoting changes in the energy-informative status (BESA) of the treated dogs could be detected. In particular, the question was whether a regulation of the factors mentioned, such as energy-informative status, HPA axis (stress axis) or hormone status, can be detected within the energy-informative control circuits or biological structures. Previous studies and their results already indicated that the technology of the test object promotes the energy-informative balance of the organism, stabilises the blood environment and modulates inflammatory processes.

Stressors as the main influencing factors

A remarkable aspect of previous research projects showed evidence of the interaction between emotional stress of the animal owners and the physical health of the animals. A transfer of emotional stressors ("referral") was also clearly manifested in the blood counts and physiological (cell structure) parameters (tested using BESA) of the dogs.

In addition, the inadequate digestion of meat-based diets due to stress-related digestive insufficiency led to further stress in the area of the gut-lung-skin axis.

The influence of stress on animals, regardless of whether it is unconscious stress (traumas, imprints, conflict-based attachments, etc.) or physical stress (e.g. also EMSF) plays a decisive role in relation to the so-called HPA axis (stress axis). The hormonal regulatory systems and mechanisms of cortisol, progesterone, testosterone, DHEA, melanin and melatonin, for example, were particularly important and highly relevant. In fact, there were numerous indications that animals, like humans, react to stress and environmental factors that go far beyond the obvious physical stresses (see the abstract on the HPA axis from study P79 Men's H.E.A.L 360 Underwear).

Direct impact of the stressors on the test subjects

The hypothalamic-pituitary-adrenal axis (HPA axis) is the central mechanism by which the body reacts to stress. This current project shows that chronic or unconscious stress in animals leads to an overstimulation of this axis, which in the long term increases the release of cortisol. A sustained increase in cortisol not only leads to systemic inflammation, but also weakens the immune system and impairs digestion, which can result in symptoms such as skin diseases or gastrointestinal problems in animals.

Animals, especially pets such as dogs, which are closely connected to the habitat of their owners, are exposed to the same electromagnetic pollution as humans. This includes Wi-Fi, mobile phone radiation and electrical devices, as well as mobile phone masts, smart meters, LED lighting and much more. Extensive studies (including our own previous studies) have confirmed that electromagnetic interference fields (EMSF) disrupt cell communication and



promote oxidative and nitrosative stress. In sensitive animals, this in turn leads to a lack of melanin and melatonin. This in turn often manifests itself in symptoms such as restlessness, sleep disorders or an increased susceptibility to diseases (renal insufficiency, lung, intestinal, liver stress, etc.).

The role of melanin and melatonin in the stress response

In addition to its role as a pigment, melanin in particular also has bioenergy-informative properties that enable the organism to perceive its environment accordingly and that can help to absorb EMSF, among other things, and protect the body from their effects. As can be seen from the present project, a well-regulated melanin system can therefore increase tolerance to such stressors. A weakened melanin system, on the other hand, is a major cause of electrosensitivity.

Melatonin, on the other hand, is primarily produced by the pineal gland. On the one hand, it is crucial for the sleep-wake rhythm, on the other hand, it also has antioxidant and anti-inflammatory properties. Chronic stress and electromagnetic interference fields (EMSF) can impair melatonin production in the pineal gland, which in turn weakens the body's ability to regenerate.

This revealed another bridge to animal health

It was plausible for us within this Study and detail-project P75 4.0 and P75 4.1 on the animal study to scrutinise the combination of stress, electromagnetic stress and hormonal deregulation as playing a central role in the observed deregulations. As the project descriptions 1-5 show, the technology of the test object in the experimental group was able to achieve a potential harmonisation of the energy-informative systems compared to the control group by supporting the homeostasis of the HPA axis and consequently the regulation of the hormone structures addressed, particularly melanin and melatonin, as well as general cell communication.

The current results confirm that the quantum technology of the test object enables sustainable physiological and energy-informative regulation in dogs on the one hand and also reduces psychosomatic stress on the other.

The aim of this study was to emphasise the importance of a holistic approach that integrates physical, emotional and energy-informative aspects in order to effectively address chronic stress in animals.

The research perspective here was generally focussed on the extent to which the quantum technology of the test object is able to provide measurable relief for these systems through targeted application.

General information on the test result

Humans, like all biological objects (including animals and plants), are a kind of receiving antenna for environmental information. This is because life, especially that of humans, animals and plants, is fundamentally and exclusively dependent on environmental information. Our organism is biologically very sensitive where natural information (fields) is located or where this natural information is subject to interactions and fluctuations. The



situation is all the more dangerous when such fields of constructive structures are disturbed by various environmental stresses.

For this reason, detected informative electromagnetic interference fields are biologically highly relevant. Any reduction or conversion of these interference fields (ideally to 100 per cent) is biologically very important, in some cases even vital. These information burdens from our primarily artificial environment are only compatible with life if they can be adapted to a natural fluctuation tolerance. Disturbances, problems, blockages and disharmonies in the biological control circuit of biological objects, especially in animals, are caused by such disruptive information influences.

Neutralising or harmonising effects were demonstrated in this project P75 4.0.3 to determine the effect of the test object, the "Quantum Upgrade" on animals. The "Quantum Upgrade" was able to neutralise the biologically detrimental effects and impacts of the stress factors tested on the animal test subjects.

The significant ability of the test object to neutralise and harmonise the stress factors tested in this project P75 4.0.3 is hereby demonstrated. The transformation of the tested information into bioenergy information with biological and life-promoting quality is proven with this project.

A brief statement in relation to the questions posed before the start of the project:

Question 1: Could the pathogen-morphological developments, which were observed in the BEFORE microscopies of the live vital blood of the test subjects (dogs), improve under the influence of the test object (test subjects of the experimental group) in the AFTER microscopies?

Answer: In the respective observation period of about 4 weeks, a significant improvement in blood morphology in terms of bacterial cyclogeny was observed in all subjects of the experimental group. This is indicated by the images and videos of the microscopies as well as the BESA tests carried out in sub-study P75 4.0.3.

The disintegration process caused by haemolysing erythrocytes and that of white blood cells was also reduced. The other blood parameters listed also confirm a positive influence of the field of the test object. The comparison with the control group in particular confirms the regulatory influence of the test object.

Question 2: Was the effect of the quantum field from the 'test object' able to harmonise or improve a blood situation that was detrimental to the health of the dogs (test subjects) via the process of quantum entanglement?

Answer: Yes

Question 3: What altered behaviour could be observed in the immune system, especially in the red and white blood cells (e.g. erythrocytes, leukocytes, monocytes, lymphocytes, thrombocytes, etc.)?

Answer: The red and white blood cells showed a regular development with no parasitic infestation, in extreme cases a very limited parasitic infestation. In any case, the relationship between the pet owner and the dog is a determining factor.



Question 4: In what way could the environment be adapted through the influence of the test object?

Answer: Especially or particularly in the area of the blood environment, clear changes in the direction of a life-friendly environment in the sense of bacterial cyclogeny could be determined by using the test object (experimental group) (see comparison of experimental group and control group).

Question 5: Is it the environment that undergoes regeneration due to the influence of the test object and thus influences certain pathogenic and apathogenic blood components?

Answer: Yes, from the observation of the image material and subjective determination via BESA, it can be assumed that the most lasting changes are seen in the environment. Ultimately, it is the environment that causes changes in the morphological blood structures in the sense of bacterial cyclogeny.

Question 6: What conclusions can be drawn from the application and the already proven effect of the test object on the situation of the animal stress factors?

Answer: The current environmental pollution (electromagnetic interference fields, heavy metals and toxic substances in nature, meadows and water, etc.) shows that a permanent use of the test object would also be necessary for dogs.

The significant ability of the test object to neutralise and harmonise or reverse the bacterial cyclogeny of the stress factors tested in this project P75 4.0.3 is hereby demonstrated or proven with this project.

Authorized Summary

The BESA tests carried out by IFVBESA on the energetic and physical effectiveness of the test object have clearly shown that this test object is able to neutralise or harmonise biologically significant stress factors at the acupuncture points of the test subjects. Using bioenergy-informative system analysis, the effect of the above-mentioned stress factors on the animal test subjects, their meridian systems and their energy-informative biological control circuits was scrutinised and systemically tested at the energy-informative level. The BESA tests BEFORE - AFTER show significant changes at the tested acupuncture points on the meridian system of the test person (animals). The measurement data and their key figures impressively confirm, on the one hand, the stresses caused by the tested factors on the human organism and, on the other hand, illustrate how the deregulating energies are transformed into biocompatible energies inherent in the body after the test object has been applied.

From a holistic perspective, it can be assumed that the positive effect on the test subjects - animals - also occurs in other animals. The BESA BEFORE-AFTER comparison with 30 different dogs (test subjects) clearly shows that the positive influence of the test object is actually possible with high precision. All measured values improved significantly from the mostly 100 per cent blue measuring range to the green, mostly 50 sct range (sct = scale value), i.e. the range of optimal measured values. This means:



Optimal regulatory dynamics have taken place. In terms of the IFVBESA, we can clearly speak of an optimal, significant improvement in the body's own energy situation.

Result

In the BESA AFTER test, the test subjects - animals were each brought into contact with the test object. In contrast to the BESA BEFORE tests, in which the test object was not used, consistently positive measurement results were recorded, indicating that neutralisation or harmonisation had taken place. The regulatory dynamics developed into an optimal effective range.

By demonstrating the energy-informative effectiveness of the "Quantum Upgrade" as a test object to the test subjects - dogs (13-18) in this project P75 4.0.3, the requirements for obtaining a BESA seal of approval from the International Association for BESA were fulfilled.