



# IFVBESA

Information is crucial

P75 4.1.5 BESA-Detail-PROJECT  
with various dogs in the  
Quantum Upgrade



# **Project P75 4.1.5 to BESA report**

within the framework of a BESA seal of approval  
on the effectiveness of the product  
"Quantum Upgrade"  
on various dogs as test subjects  
also referred to as "test object" in the project



**Client:**

Company Leela Quantum Tech, LLC  
Attn: Eleonora Goldenberg  
1421 LUISA STREET, STE G  
SANTA FEE, NM 87505  
USA

**Project participants:**

**Project management:** Wolfgang Hans Albrecht, President and Scientific Director of IFVBESA

Mag. med. vet. Barbara Hollogschwandtner

**Tester:** Eva Schmidt, Vice President and Deputy Scientific Director of the IFVBESA

**Test subject (proband):** 30 (16/14) pets as test subjects with correspondingly different age and health status in a randomised double-blind study.

**Test subjects:**

**P75 4.1.1:** 6 test subjects from P1 to P6

**P75 4.1.2:** 6 test subjects from P7 to P12

**P75 4.1.3:** 6 test subjects from P13 to P18

**P75 4.1.4:** 6 test subjects from P19 to P24

**P75 4.1.5:** **6 subjects from P25 to P30**

**Project location:** Location 1: International Professional Association for BESA (IFVBESA)  
Hauptstraße 1-2

A-4861 Kammer/Schörfling am Attersee

Location 2: Holistic veterinary practice Purkersdorf

Mag med vet Barbara Hollogschwandtner, veterinary surgeon  
Linzerstraße 63, A-3002 Purkersdorf

**Date:** from 05.03.2024 until 07.02.2025

**Project duration:** 325 days



## Table of Content

Basics of research project creation P75 4.1 .....	6
Project - Design .....	8
Test subjects.....	9
Abstract on an interdisciplinary perspective .....	10
Research funding services of the IFVBESA - BESA reference tests .....	11
Research project description .....	11
General information on the information transfer of the test object .....	12
Test procedure .....	13
Hormone test procedure.....	13
The result of an interdisciplinary perspective on the regulation of chronic stress in dogs.....	56
General information on the test result .....	<b>Fehler! Textmarke nicht definiert.</b>
General information on the test result .....	57
Authorized Summary.....	58

## Important notes

The client has the right to utilise this expert opinion/project. Irrespective of this, this report/project is the intellectual property of IFVBESA as the contractor. The contractor is authorized to use this expert opinion/project for other purposes, provided that this does not violate the client's data protection and confidentiality obligations. Apart from this, this project/expert opinion, with the exception of the "Authorized Summary", may not be changed or abridged and passed on without the consent of IFVBESA. The order for this report/project relates to physical and energy-informative measurable values, the interpretation of which is based on the guidelines of BESA or IFVBESA. Maintaining the quality/effectiveness of the tested technologies/processes/products and their regular monitoring is the task and responsibility of the client. For this reason, the technologies/processes/products are subjected to regular efficacy tests by the IFVBESA in order to confirm their functionality in the respective certificates with a validity period. The examination of the manufacture, the mechanism of action or interpretations of the client's products vis-à-vis third parties are not the responsibility or task of the contractor. Video recordings may only be made with the authorization of IFVBESA.



## BESA legend for interpreting the BESA measurement results

A measured value of 50 on the tested meridian represents an optimal energetic state in this organ or its subordinate and superordinate levels. Measured values in the range of 50 to max. 70 still count as a neutral and balanced energy status. The organism is able to regulate irritations of the system (incorrect environmental signals) very well.

Measured values of over 70 to 100 represent the inflammatory range or a so-called energy surplus as a reaction to the stimulation of the system by corresponding environmental signals. Once the maximum values have been reached, the energy state tips into the degenerative (blue) range.

Measured values from below 50 to around 0 represent the so-called degenerative measuring range or a lack of energy as a reaction to the stimulation of the system by corresponding environmental signals.

Measured values that are represented by a so-called pointer drop of more than 3 scale lines indicate total deregulation. The influence of certain environmental signals then leads to such strong system overloads that they can only be harmonised by corresponding new signals.

The orange measured values represent a resonance of the tested substances (electronic honeycomb contents) in the respective bioenergy-informative control circuits called up as well as in its subordinate or superordinate structures.

## BESA key figures:

<b>up to 0.79</b>	very deep energetic regulation disorder (SSD) energy deficiency
<b>0.8 to 1.19</b>	Severe energy regulation disorder (SD) Degeneration/energy deficiency
<b>1.2 to 1.59</b>	energy regulation disorder (D) degeneration/energy deficiency
<b>1.6 to 1.99</b>	degenerative transition area (DÜ)
<b>2.0 to 2.39</b>	optimal regulation (OR)
<b>2.4 to 2.79</b>	in regulation (R)
<b>2.8 to 3.19</b>	partial ignition = regional energy surplus (PE)
<b>from 3.2</b>	total inflammation = strong general energy surplus (TE)





## Basics of research project creation P75 4.1

The International Association for Bioenergy Informative Systems Analysis was commissioned by the company Leela Quantum Tech, LLC to test the effect of the test object "Quantum Upgrade" using bioenergy informative systems analysis (BESA) on the relevant test subjects (dogs) and to demonstrate its effect on the test subjects. The testing took place independently of the subjective perception of all test subjects. The "Quantum Upgrade" was presented as follows, according to the contract company.

### **Description of the test object, "Quantum Upgrade" by the client:**

Firstly, it is important to understand that two independent objects can be energetically connected to each other. This connection or "association" is known as quantum entanglement. As soon as these two objects are entangled with each other, a change in one object or entity also causes a change in the other or the other - even if they are not in close proximity to each other.

This is why, for example, a mother can "feel" when something happens to her child, even if she is thousands of kilometres away. She is connected to her child (in quantum terms, they are said to be entangled with each other). In this way, scientists can also take a skin cell or blood sample from an astronaut on Earth, send it into space and detect any changes in the cells or samples that remain on Earth.

### **„Quantum Upgrade" utilises the same proven principle**

Through years of research and the development of the Quantum Upgrade product, the company "Leela Quantum Tech, LLC" has created one of the world's most powerful sources of usable quantum energy. With the Quantum Upgrade, any biological object can be connected to this quantum source (energy source).

Immediately after activation, there is an immediate quantum entanglement and quantum energy is channelled to the locations previously defined within the scope of the respective requirements. Healers, emphatic people or those who are particularly sensitive to fields such as electromagnetic fields (EMF) or electromagnetic radiation will probably notice the difference immediately. Others may need a little more time or may not "feel" anything at first - until the first changes in their lives become apparent.

### **How quantum energy supports change**

In physics, there is the so-called principle of inertia, which states that

"A body at rest remains at rest or maintains its state of motion as long as no force acts on it or the sum of the forces cancels out. A body in motion also continues to move at a constant speed as long as no external forces act on it".

This so-called first Newton's law can therefore be applied just as well to all biological objects as to humans: It is easier to keep something the same than to change it, as change requires more energy.

But what happens if you don't have enough energy to change? You get stuck. And that is precisely the point at which the majority of humanity finds itself. They are stuck in old ways of thinking, acting and living.



This is one of the reasons why meditation, prayer and other spiritual practices can lead to powerful changes. They connect us with the "source" or, in other words, back to our source (origin, the absolute) via quantum energy.

And thanks to this additional energy (quantum energy), the "quantum upgrade" can bring about a change that would have been impossible before.

### **The Quantum Upgrade as a tool**

A "Quantum Upgrade" is a technology, one could also consider it a tool, that creates a concentrated quantum energy space.

This is able to balance energies, increase performance and build up protection against e.g. harmful electrosmog radiation (EMSF). Quantum Upgrade is the most innovative development in the field of natural health, combining science and quantum energy healing in an easy-to-use and easy-to-understand subscription service.

Quantum energy harmonises body, mind, spirit and consciousness (body as the embodiment of consciousness). It expands consciousness and activates the flow of pure life energy through the body!

However, juggling the demands of modern life can be tiring and stressful and can leave people feeling overwhelmed. Subconscious fears and ingrained opinions often make us forget that we all have infinite potential and are beings without limits.

And this is exactly where the Quantum Upgrade helps us to return to our natural ego state and expand our consciousness in the long term

In this way, a healthy, fulfilling and meaningful life can be experienced.

### **Polarity**

There is no polarity in the Quantum Upgrade. Magnets add pressure, instability and a certain type of alignment to a quantum field, so the energy of a magnet-supported quantum field is a "trapped" and almost locked-in energy force that cannot flow freely and is constantly battling with the magnetic field. From an energetic point of view, the field must constantly recharge itself. The instability, disharmony and energetic pressure can be felt and "seen" in such devices, and they affect everything in their vicinity.

With the Quantum Upgrade, a groundbreaking new quantum energy generator has been created that provides not just a one-dimensional quantum field, but a truly multi-dimensional quantum space and is also very powerful. It is also not bound in any way to the Earth's magnetic fields and can therefore be considered (and energetically looks like) a quantum sun, as it radiates and emits freely in all directions without an Earth-bound flux. The "Quantum Upgrade" is dynamic, harmonic, always stable and retains these properties when the quantum energy concentration and the levels of consciousness/perspective are increased. Although the use of a Quantum Upgrade comes with a certain responsibility, one should know that the energy is always balanced and harmonious.

### **To the Quantum Upgrade as a test object**

#### **Animals also benefit from the "Quantum Upgrade"**

Not only humans benefit from the positive effects of quantum energy. Animals can also sense the energy and utilise it very well for themselves, provided it is tailored to their needs.



These indications are intended as an interpretation of the scope of the effect of the test object and an indication of its holistic orientation. The effect of the "Quantum Upgrade" can thus be easily achieved for the animals.

The concept of this test object is therefore to harmonise and neutralise disturbances, problems, blockages and disharmonies in the animals' environment and thus replace negative states with positive states. Due to its mode of operation, the test object has a simple and yet very effective area of application for the animals.

The animals/subjects are primarily selected by the project partner Barbara Hollogschwandtner, MD. A detailed description of the animals can be found in the project description.

## Project - Design

This project is an exploratory study in which the harmonising effect of the test object, the "Quantum Upgrade", on 30 test subjects (dogs) is investigated. This project is double-blind, randomised and carried out in relation to the test object using quantum entanglement. In this scientific experiment, there are at least 16 test subjects in an experimental group (treatment group) and 14 test subjects in a control group (placebo).

The results with regard to the effect of the test object are even more significant than those of a pure double-blind study, as the design of this project includes modern, quantum-physical elements. It thus creates new paths and standards in the field of research into clinical quantum technologies and their modes of action.

### **The explorative research approach of the IFVBESA**

New knowledge, new insights and new ideas are the breeding ground in which science and the technologies of the future thrive. The explorative approach of most of our research projects is the seed for the information medicine or quantum technology of tomorrow. In exploratory study design, we present a methodological research approach in which research areas or research questions are investigated that have not yet been investigated. This demonstrates both the development and the potential of novel approaches for research into future technologies.

The concrete and feasible application reference of the international professional association for BESA reduces the otherwise high research risk that often prevents companies and research institutes from dealing with topics at a very early stage of development.

### **Double-blind and randomised**

This project is conducted in a double-blind, randomised and quantum-entangled manner.

Double-blind means that neither the subject nor the tester knows who will be confronted with the test object and who with the placebo. This is only possible through random group allocation (randomisation). The aim of blinding is to analyse the results as objectively as possible.

Randomised means that a procedure is used in this project in which the test subjects are randomly assigned to the control group or the experimental group.





### **Quantum entanglement:**

Quantum entanglement is not a physical connection between particles, but a synchronisation of information and energy in the field of consciousness. Everything is already connected - not through space and time, but through coherent resonance within a universal information network. Matter is therefore merely a condensed manifestation of this interaction of consciousness.

This means for the current test object: Each test subject (in this case the dogs) receives an energy-informative signature via virtually defined coordinates. This signature forms an energy-informative imprint in the quantum field and exists as a constant reality at every moment of movement.

It stores the frequency and essence of what is mapped via the coordinates and remains stable in the universal information network as a real extract of the space of consciousness. This creates an energetic bridge - a connection between the original moment and the current space of consciousness that remembers and works independently of space and time.

About photography: A photograph is therefore an energetic-informative imprint from the quantum field. This means that a photograph is a visual reminder on the one hand and establishes an energy-informative connection to the current or original moment on the other. The photographs were tested and analysed in the IFVBESA laboratory using a BESA surrogate. This means that all subsequent BESA tests in the project, which are recorded using photographs, are subsequently carried out under the IFVBESA laboratory conditions mentioned above.

**What does surrogate mean:** This is a substitute person who stands in for the respective test person live in the case of a quantum entangled BESA test or application of the test object.

**Placebo (empty object):** In this case, unlike the test object, the placebo is an empty object that does not contain any effective frequencies. The test object cannot be distinguished from the empty object (placebo) either for the test subjects or for the test persons.

## **Test subjects**

In addition to the test object already described, at least 30 test subjects form the framework for this research project. In parallel, additional test subjects will be integrated as substitutes for possible unexpected dropouts.

The test subjects as animals (dogs) will be informed in advance of this project via the dog owners about the general procedures for this project and their function as representatives (see corresponding documents).

General means that neither the subjects nor the test persons know what the background of the series of measurements is. The aim of this type of blinding is to obtain as objective an evaluation of the results as possible in order to exclude so-called placebo effects.

The test subjects are anonymously assigned a number from P1 to P30. The test subjects are also anonymously assigned to either the control group or the experimental group.

The different appointments made with the test subjects for the BESA tests may result in the test subjects' numbers from P1 to P30 appearing differently in both the experimental group



and the control group. For this reason, in the statistical analysis, the numbers of subjects P1 to P30 are additionally numbered from 1 to 28 (see list of the experimental group and the control group)

For those test subjects who did not have the opportunity to take part in the BESA tests live during the scheduled period, photos were taken for the quantum entangled BESA tests. The photos were printed on high-quality photo paper, which is necessary for this form of BESA testing. These test subjects are also included in the statistics with quantum entanglement (QV).

The BESA tests are carried out as follows for each test subject:

1. at the beginning of the project to create a so-called status (actual situation).
2. in the 2nd part of the project after at least 4 weeks of exposure to the test object or the blank object (placebo).

## Abstract on an interdisciplinary perspective

### General

Chronic diseases such as atopic dermatitis, gastrointestinal dysbiosis, respiratory problems, epilepsy and cancer are increasing alarmingly in dogs. Our own initial research results show that these problems are caused on the one hand by environmental factors such as environmental toxins, electromagnetic interference fields (EMSF) and inadequate nutrition, and on the other hand by psychosomatic stresses that dogs often pick up from their owners' emotional environment (e.g. grief or guilt).

### Questions that flow into this current study

In this current study, we are investigating the effect of an innovative test object on the general health parameters of dogs. The bioenergy-informative system analysis (BESA) is used to detect possible changes in the energy-informative status and in the vital blood of the animals. Initial results indicate that quantum technology at least stabilises the status of the energy-informative system, opens blocked control loops, modulates inflammatory processes and promotes a sustainable balance in the organism. The initial results of BESA tests show a clear regulation of the energy-informative parameters towards a regulative behaviour. Particularly noteworthy is the observed interaction between the emotional stress of the animal owners and the health of the animals. In many cases, stress-related digestive insufficiencies were found, which led to further stress.

### Stress axis

A central aspect is the role of the HPA axis (hypothalamic-pituitary-adrenal axis) in connection with chronic stress. Overstimulation of this axis by physical and emotional stressors impairs hormonal regulatory systems (e.g. cortisol, melanin, melatonin, etc.) and leads to systemic inflammation, immunodeficiency and impaired digestion. Electromagnetic interference fields intensify these stresses as they disrupt cell communication and generate and promote oxidative and nitrosative stress.



Melanin and melatonin play a key role here: melanin not only acts as a pigment, but also as a bioenergy-informative protective system against EMSF, while melatonin has antioxidant and anti-inflammatory properties. However, stress and EMSF impair their function, which weakens the body's ability to regenerate.

### Summarised

The initial results suggest that the technology of the test object can bring about energy-informative harmonisation, support the homeostasis of the HPA axis and promote the regulation of melanin, melatonin and cell communication.

The planned study aims to further investigate these potential effects and shed light on their significance for holistic animal health.

## Research funding services of the IFVBESA - BESA reference tests

Project P75 4.1.1 is specifically concerned with proving the effectiveness of the test object's technology on test subjects 1-6 as dogs.

The test object is tested in accordance with the client's wishes within the framework of the applicable IFVBESA conditions for awarding quality seals. In principle, seals of approval are awarded in three categories depending on the significance of the test results, taking into account all tests of a project. The purpose of the test object is to determine whether its application can harmonise and neutralise the above-mentioned stresses from the typical environmental influences and, as a result, harmonise or neutralise existing disturbances, problems, blockages and disHarmonys in the energy system of the test subjects (biological system of the animals) and thus replace negative pathological conditions with positive conditions. This will be scrutinised in the following tests commissioned for this project.

## Research project description

The purpose of the test is to prove the functionality of the test object by means of test results obtained by subjecting the test persons to a BESA basic test in a BEFORE measurement and then connecting and testing them with the test object (Quantum Upgrade) in the AFTER measurement.

- The BEFORE measurements are carried out without the test object
- The AFTER measurements are carried out with the test object

**The question** for each AFTER measurement was: "Is the test object suitable and able to harmonise or neutralise the perceived stressful effects on the animals' energy-informative system from the BEFORE measurements?"

The appropriately designed tests should provide information on this by comparing the BEFORE measurements without the test object with the test results of the AFTER measurements to be carried out using the test object.



### Further fundamental questions of this research:

1. Can the technology of the test object have a positive constructive and life-promoting influence on the effects of the stress factors mentioned on the HPA axis and on the hormonal markers mentioned such as melanin and melatonin in dogs?
2. is a measurable relief of chronic stress possible through targeted application of the technology of the test object?

The client's concern is to determine whether the test object, the "Quantum Upgrade", as noted in the product description, is suitable for harmonising the disturbances, problems, blockages, disharmonies in the meridian system of the test person (biological object-animals) resulting from the PREVIOUS measurements.

## General information on the information transfer of the test object

Information is transferred from the hyperspace of the test object to the hyperspace of biological objects (humans, animals, plants). From there, the information reaches the reference space or energy space via so-called interaction channels. This is an amalgamation of all organs and forms of energy in the biological object. This is where the information from the programme can be dynamically realised and thus change current states. The changes can manifest themselves in the form of neutralisation or harmonisation of disorders, the resolution of problems, blockages and disharmony.

### **Conditions:**

The corresponding BESA tests are carried out in the IFVBESA premises under laboratory conditions, at room temperature of 20°Celsius, on natural wood flooring. Before the BESA tests, the test subjects are generally desweathed (made fit for testing) or their suitability for testing is scrutinised. As the test subjects are animals, the animals are tested using a so-called surrogate (full replacement for the animals). The surrogate is another human (animal owner, animal hair, animal photo), which is used to test the animal's meridian system.

The corresponding DF microscopies are carried out under laboratory conditions at room temperature of 20°Celsius.

**Pos.1** BESA 1 Basic test (bioenergetic status) on the test subjects (animals)

**Pos.2** BESA testing when the test subjects (animals) are confronted with the test object

**Pos.3** Evaluation of the results in the project and summary in a corresponding report according to the sample

### **Procedure and specifications for implementation**

1. **basic BESA measurement of the test subjects (animals)** at all previously determined measuring points (TING points of the surrogate) serve to determine the actual state. The



results are determined exactly according to the BESA specifications and documented using the BESA graphs.

## 2. activation of the test object test objekt

2.1. When the test object is activated, it is applied or activated according to the client's specifications.

2.2. The test subjects are brought into contact with the test object via quantum entanglement. The measurement points mentioned under point 1 are measured in the same sequence and duration to determine the current energy state. The results are determined exactly according to the BESA specifications and documented using the BESA graphs.

## Test procedure

### **BESA 1 testing BASIC BEFORE as status**

In the first step, a basic bioenergetic test (bioenergetic status) is carried out on the meridian end points (TING points of the surrogate) of the test subjects (animals).

Objective: To create a basic test (status) to represent the initial energetic situation for all further BESA tests.

### **BESA 2 testing AFTER, after the respondent has been confronted with the test object**

In the second BESA test, the test subjects are brought into contact with the test object via quantum entanglement or the test object is activated in this way via the measuring circuit in relation to the respective pets.

Now the question is: How does the meridian system of the test subjects react as a surrogate for the animals within the effective range of the test object?

## Hormone test procedure

With its methods and applications (BESA individual tests), the IFVBESA actively contributes to the reorganisation of scientific perspectives. Through its research work, it is shaping the paradigm shift towards a holistic view of health and regulation in a special way. The bioenergy-informative system analysis (BESA) goes far beyond conventional, material test procedures. It records the regulatory processes on an energy-informative level and thus integrates the quantum-physical reality of the body.

### Energy-informative regulation is primary, not secondary

Modern scientific fields such as quantum biology, epigenetics and information medicine are increasingly proving that biological systems are not only controlled by biochemical processes, but are also significantly influenced by consciousness and, as a result, by electromagnetic signals, quantum coherence and bioenergetic fields.

Hormones are far more than biochemical substances - they are also carriers of information on the energy-informational level. They act as mediators between consciousness, body and



environment. This means that the bioenergy-informative regulation determines the biochemical reaction, not the other way round.

A conspicuous hormone field on the energy-informative level can already indicate a biochemical imbalance - even before it is measurable on the physical level. Studies and empirical values from BESA tests show that deviations in these fields are often reflected later in laboratory parameters.

Renowned scientists such as Prof Fritz-Albert Popp and Dr Ulrich Warnke have proven that biological systems react to electromagnetic and coherent light signals. Biophotons, frequencies and fields not only control enzyme activities and cell communication, but even influence DNA.

BESA is based on this science, which is shaping the next generation of medicine: information medicine.

With BESA, objective answers to subjective questions can be found - with repeatable, meaningful and correlating results. Experience reports, case studies and scientific findings show that BESA is an essential complement to conventional diagnostics - often even the decisive key to a holistic approach.

## Data sheet on the tested factors

### **Cortisol**

Cortisol is a steroid hormone produced by the adrenal cortex and belongs to the group of glucocorticoids. It plays a central role in the body's stress response and is involved in various physiological processes. Here are the most important functions:

### **Progesterone**

Progesterone is a steroid hormone that plays an important role in both women and men. It is often referred to as the "mother hormone" as it serves as a precursor hormone for the synthesis of other essential steroid hormones such as cortisol, testosterone and oestrogen.

### **Testosterone**

Testosterone is a steroid hormone from the androgen group and plays a central role in both sexes, although it is often known as the "male sex hormone". It is produced in both men and women, but in different quantities and with slightly different functions.

### **Estriol**

Estriol (E3) is one of the three main oestrogens in the human body (alongside estradiol (E2) and estrone (E1)) and is regarded as the "weakest oestrogen". It plays a special role in the formation of the internal and external mucous membranes, in reproduction and in hormonal balance in women, but is also relevant in men, albeit in smaller quantities.

### **Estradiol**

Estradiol (E2) is the most biologically active and strongest of the three main oestrogens (alongside estrone (E1) and estriol (E3)). It plays a central role in both women and men, particularly in hormonal balance, reproduction and general health.

### **DHEA**





DHEA is a steroid hormone that is mainly produced in the adrenal cortex, but also to a lesser extent in the gonads (ovaries and testicles) and in the brain. It is one of the most abundant steroid hormones in the human and animal body and is a precursor for the production of androgens (e.g. testosterone) and oestrogens.

### **What is the thyroid gland?**

The thyroid gland is a butterfly-shaped gland located in the front of the neck below the larynx. It is a central component of the endocrine system and produces hormones that regulate numerous processes in the body, including metabolism, energy production and growth. It is like an external sensor to our environment.

### **Melanin**

Melanin is a pigment found in the skin, hair and eyes. It is produced in specialised cells called melanocytes.

Function: Protection from UV radiation: Melanin absorbs UV rays and thus protects the skin from DNA damage caused by sunlight. It determines the individual skin, hair and eye colour. As a radical scavenger, it protects the cells from oxidative stress.

#### Special feature:

Melanin also has an energy-informative significance and is increasingly being researched in science as a bridge between physical and energetic existence (e.g. protection against electromagnetic fields).

### **Melatonin**

Melatonin is a naturally occurring hormone that is produced primarily in the pineal gland in the brain and plays a central role in regulating the sleep-wake cycle. It is primarily known for promoting sleep and synchronising the circadian rhythm by signalling to the body when it is time to sleep and when it is time to wake up. In a spiritual context, the pineal gland is often referred to as 'the third eye' and is considered a centre for intuition, consciousness and spiritual perception. The pineal gland is also the place where melatonin is produced and therefore melatonin plays a special role in spiritual understanding.

### **5-HMF or 5-Hydroxymethylfurfural**

This is an organic compound that is formed from sugar sources through thermal or acidic decomposition. It is a furanoid compound found in many natural substances, such as honey, coffee, fruits and certain sugar products that have been heated.

In medical research in particular, 5-HMF has potential antioxidant and anti-inflammatory properties that make it a top topic of research in the field of health and medicine. Oxidative and nitrosative stress play an important role in the development of many chronic diseases, 5-HMF serves in this context as a marker for the extent of this stress.

### **AKG or Alphaketoglutar Säure**

Alphaketoglutarate (AKG) is an important compound in human metabolism and plays a central role in the citric acid cycle (also known as the Krebs cycle), which supports energy production in cells. AKG is used as a kind of intermediate in the conversion of amino acids and



carbohydrates into energy. It is also involved in the synthesis of glutamate, an important neurotransmitter.

AKG as a marker for oxidative stress provides information on the extent to which a substance or a technology (in this case the quantum technology of the test object in question) is able to reduce oxidative stress in order to verify the improvement of cell functions. The relationship between AKG and oxidative stress is particularly relevant as it plays a role in the detoxification process of cells and can help to minimise free radical damage.

### **Methylene blue**

Methylene blue is a chemical molecule that plays a role in various medical and scientific applications. In this study, it is an interesting aspect in the context of research on oxi- and nitro-stress in its capacity as a marker. In conjunction with melanin and melatonin, the association lies in its ability to act as an antioxidant and protective agent that helps the body defend itself against stressors.

#### Similarities to melanin and melatonin:

Protective effect: Like melanin and melatonin, methylene blue could play a protective role against oxidative stress and free radical damage. Melanin protects the skin from UV radiation, while melatonin plays an antioxidant role in the brain. Methylene blue appears to have a similar protective effect on cells.

Neuroprotection: All three substances also have neuroprotective properties, with methylene blue and melatonin being compared in their ability to protect the brain from damage caused by oxidative processes.



## Proband 25 LB Control group



### BESA 50 Testing BASIC BEFORE

Male dog: LB, mixed breed from Bosnia  
Date of birth: unknown, approx. 5 years  
Body weight: 20kg

**Health condition:** as far as no health challenges can be recognised

The subject is a stray female dog from Bosnia. All BESA tests were performed quantum interleaved.

We decided to include this dog in the study because we assumed that, as a stray dog, she would be confronted with various health challenges.

The upcoming BESA tests and the individual tests on page 20 show that we were very wrong in this assumption. I would like to point out that there are no mobile phone masts in the valley where the animal lives.

#### BESA Test evaluation P75 4.1.5

from **30-10-2024 to 12:18 – 12:26** (8 minutes) Pages 18 - 19

**Result:** The MessResult indexed all measuring points in the optimum energy-informative range. There were no energy-informative stresses at the meridian end points and subsequently on the subject's subordinate metabolic situation.

#### 100% in the green area

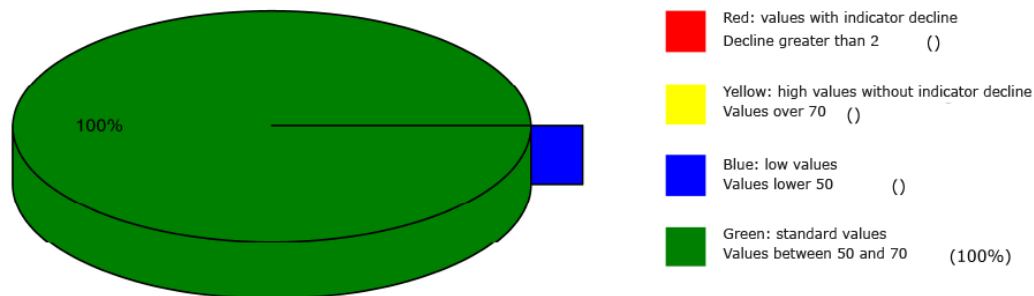
**Conclusio:** As the graphs show, all measurement points are in the green, optimum measurement range (balanced or harmonious energy situation).

These measured values interpret the corresponding values at the acupuncture points tested. The comparisons of the BESA graphs confirm the energy-informative events in the subject's meridian system.

Due to the excellent measurement results, no further BESA tests were carried out AFTER this. Important: No significant exposure to mobile phone masts could be tested in the habitat of this bitch. See also the following individual BESA tests.



## Overview of BESA measuring



## BESA basic test

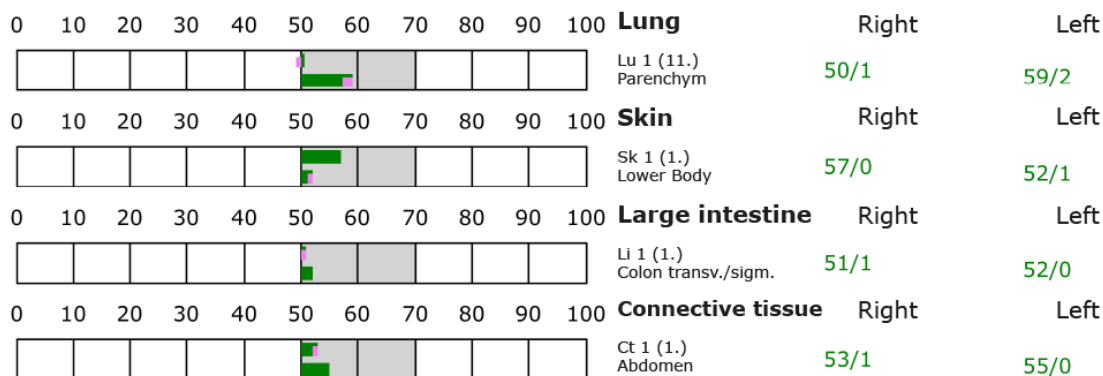
+++ : Indicator decline > 15 Skt.  
++ : Indicator decline 6-15 Skt.  
+ : Indicator decline 3-5 Skt.

T: Total inflammation (>89 Skt.)  
P: Partial inflammation (70-89 Skt.)

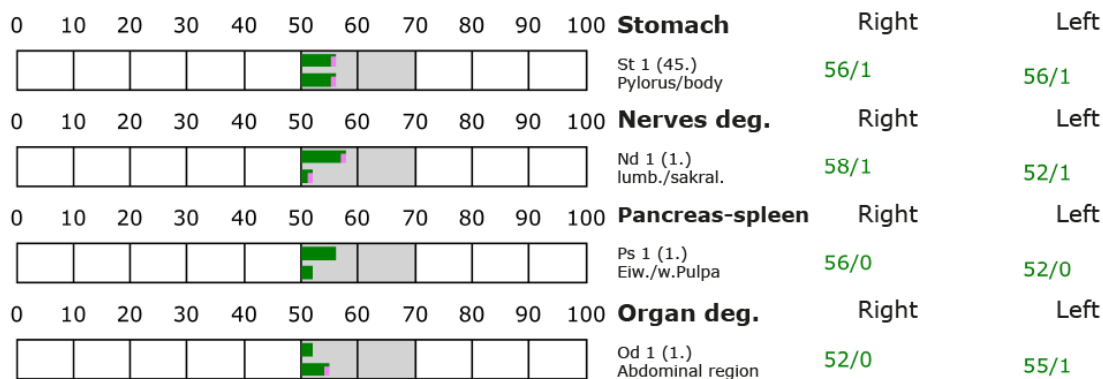
D: Degeneration (< 50 Skt.)

Standard values: (50-70 Skt.)

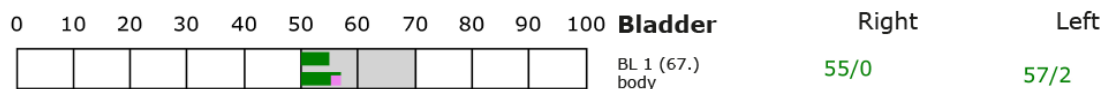
### Element: lu - sk - li - ct



### Element: st - nd - ps - od



### Element: bl - ly - ki - al





## BESA basic test

+++ : Indicator decline > 15 Skt.  
++ : Indicator decline 6-15 Skt.  
+ : Indicator decline 3-5 Skt.

T: Total inflammation (>89 Skt.)  
P: Partial inflammation (70-89 Skt.)

D: Degeneration (< 50 Skt.)

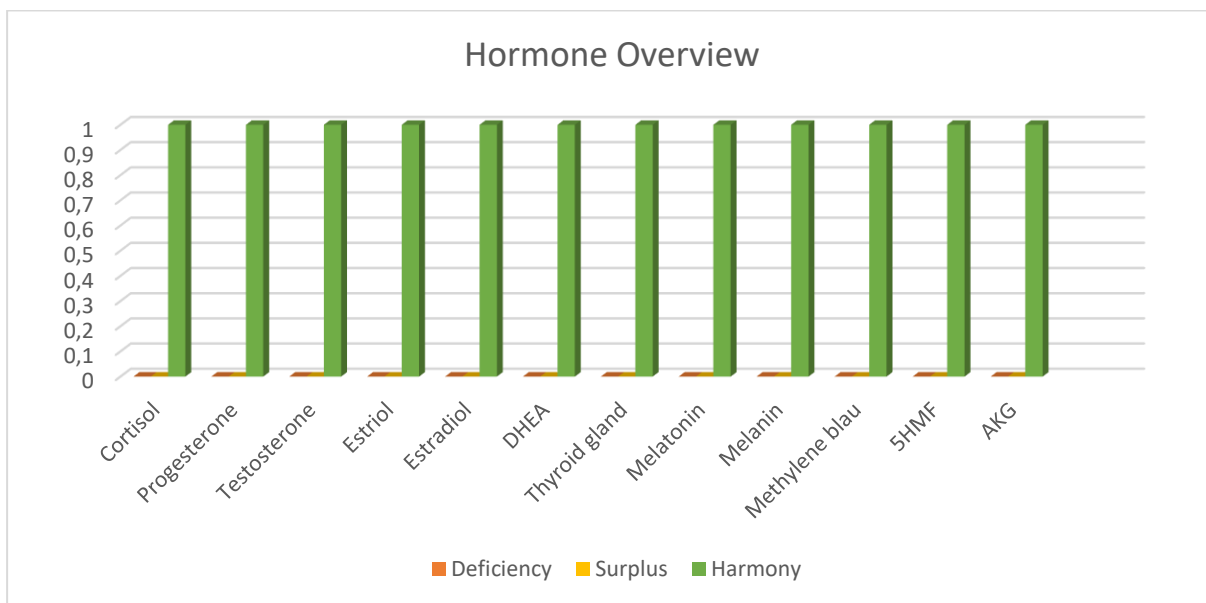
Standard values: (50-70 Skt.)

Element: bl - ly - ki - al										
0	10	20	30	40	50	60	70	80	90	100



## Hormone scheme – BEFORE

	Deficiency	Surplus	Harmony
	Hypofunction	Hyperfunction	
Cortisol			+
Progesterone			+
Testosteron			+
Estriol			+
Estradiol			+
DHEA			+
Thyroid gland			+
Melatonin			+
Melanin			+
Methylene blue			+
5-HMF			+
5-Hydroxymethylfulfural			+
AKG			+
Alpha-Ketoglutarat			



### Cortisol-Level

	Morning	Noon	Evening
Cortisol			
too high			
too low			
neutral	+	+	+

## Electromagnetic interference fields BEFORE

	yes	no
GE 1 Silicea - strain on the EMSF		+
GE 2 Electromagnetic charging		+
GE 3 Load on radio transmitter		+





## Proband 26 BB Control group

### BESA 51 Testing BASIC BEFORE



Male dog: BB, mixed breed from Bosnia/male dog

Date of birth: unknown, approx. 5 years old

Body weight: 20kg

**Health condition:** as far as no health challenges can be recognised

The subject is a stray male dog from Bosnia. All BESA tests were carried out quantum interleaved.

As with subject P25, we decided to include this male dog in the study because we assumed that, as a stray dog, he would also be confronted with various health challenges.

The upcoming BESA tests and the individual tests on pages 24 show that we were very wrong in this assumption. This male dog comes from the same valley as the female dog (P25) and has always been with her. They accompanied her every step of the way.

#### BESA Test evaluation P75 4.1.5

from **30-10-2024 to 12:27 – 12:31** (4 minutes) Pages 22 - 23

**Result:** The MessResult indexed all measuring points in the optimum energy-informative range. There were no energy-informative stresses at the meridian end points and subsequently on the subject's subordinate metabolic situation.

#### 100% in the green area

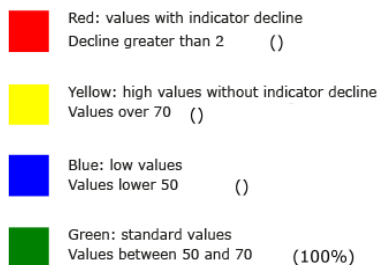
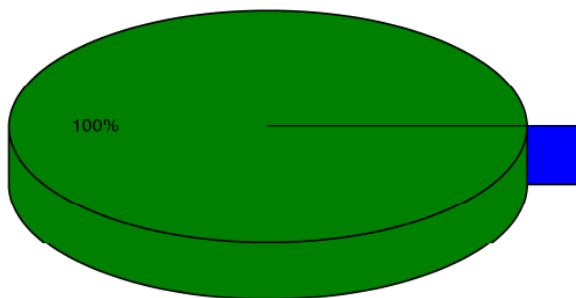
**Conclusion:** As the graphs show, all measurement points are in the green, optimum measurement range (balanced or harmonious energy situation).

These measured values interpret the corresponding values at the acupuncture points tested. The comparisons of the BESA graphs confirm the energy-informative events in the subject's meridian system.

Due to the excellent measurement results, no further BESA tests were carried out on this male dog afterwards. Important: No significant exposure to mobile phone masts could be tested in the habitat of this male dog (same habitat as female dog P25). See also the following individual BESA tests



## Overview of BESA measuring



## BESA basic test

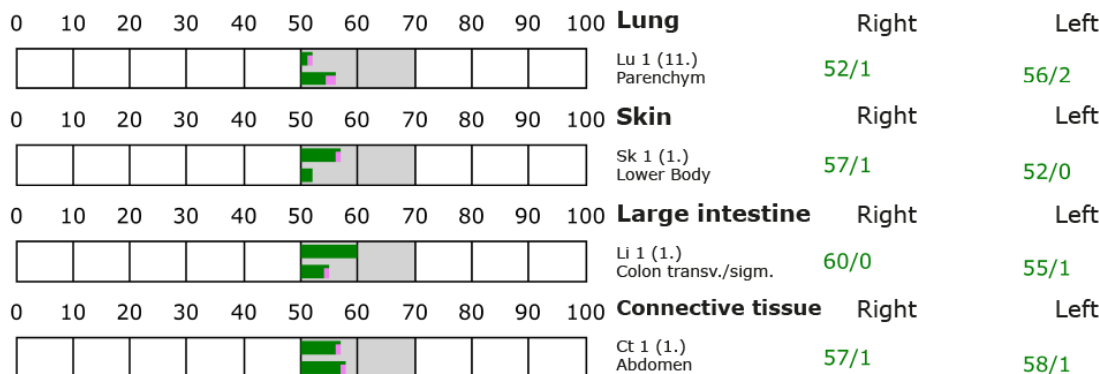
+++ : Indicator decline > 15 Skt.  
++ : Indicator decline 6-15 Skt.  
+ : Indicator decline 3-5 Skt.

T: Total inflammation (>89 Skt.)  
P: Partial inflammation (70-89 Skt.)

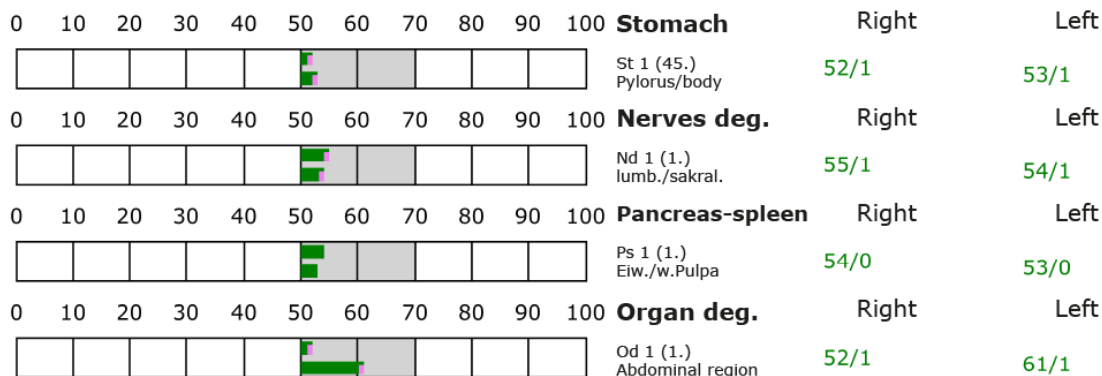
D: Degeneration (< 50 Skt.)

Standard values: (50-70 Skt.)

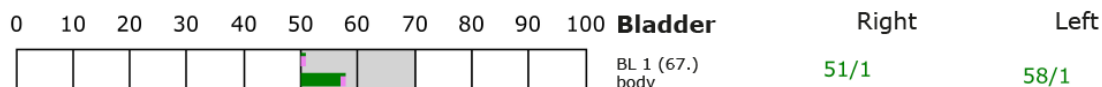
### Element: lu - sk - li - ct

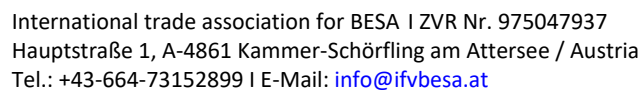


### Element: st - nd - ps - od



### Element: bl - ly - ki - al





- +++ : Indicator decline > 15 Skt.
- ++ : Indicator decline 6-15 Skt.
- +: Indicator decline 3-5 Skt.

T: Total inflammation (>89 Skt.)  
P: Partial inflammation (70-89 Skt.)

D: Degeneration (< 50 Skt.)

Standard values: (50-70 Skt.)

Organ	Side	Score	Notes
Lymph	Right	53/0	Lymph 1 (1.) Tons.Palat.
	Left	57/1	
Kidney	Right	62/2	Kidney 1 (11.) pelvis
	Left	55/1	
Allergy	Right	53/1	Allergy 1 (1.) Lower body
	Left	50/0	

0	10	20	30	40	50	60	70	80	90	100		Right	Left	
												Ga 1 (44.) Duct.choled./hep.	52/2	53/0
												Jd 1 (1.) lower extremities	55/2	60/1
												Li 1 (1.) Central veins	55/1	55/0
												Gd 1 (1.) Abdomen	50/1	51/0

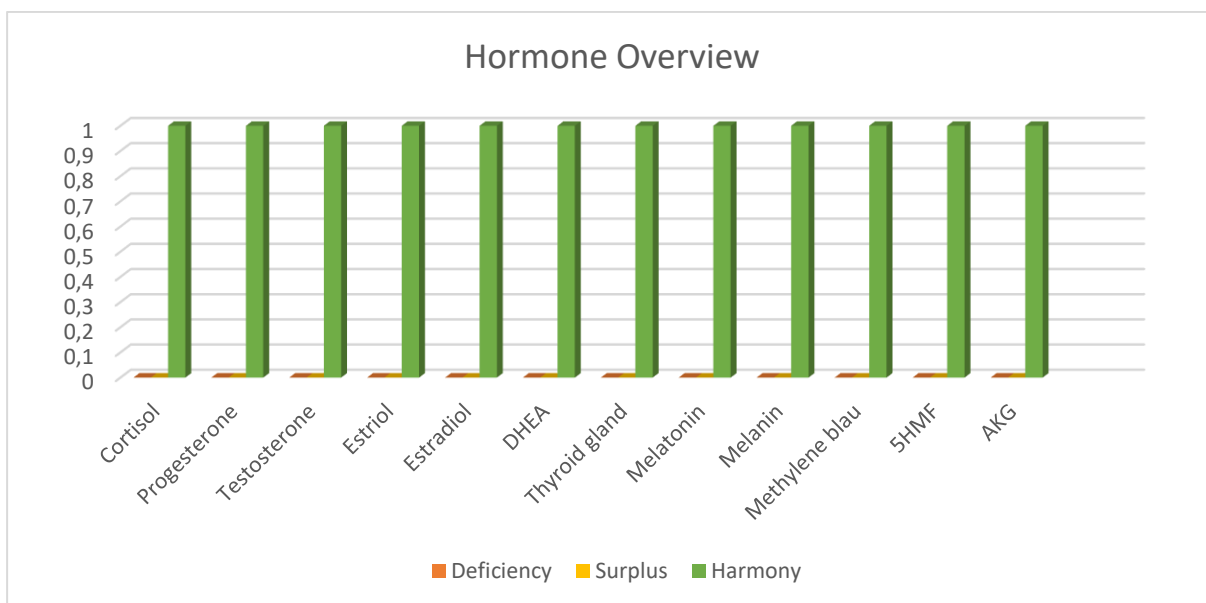
Heart											Right	Left
0	10	20	30	40	50	60	70	80	90	100		
											52/0	58/1
Small intestine											Right	Left
0	10	20	30	40	50	60	70	80	90	100		
											52/1	54/0

0 10 20 30 40 50 60 70 80 90 100											Blood circulation	Right	Left
											Bc 1 (9.) SMP Arteries	55/0	57/0
0 10 20 30 40 50 60 70 80 90 100											Endocrine	Right	Left
											3e 1 (1.) Gonads/NNI	54/0	57/1



## Hormone scheme – BEFORE

	Deficiency	Surplus	Harmony
	Hypofunction	Hyperfunction	
Cortisol			+
Progesterone			+
Testosteron			+
Estriol			+
Estradiol			+
DHEA			+
Thyroid gland			+
Melatonin			+
Melanin			+
Methylene blue			+
5-HMF			+
5-Hydroxymethylfulfural			
AKG			+
Alpha-Ketoglutarat			



### Cortisol-Level

	Morning	Noon	Evening
Cortisol			
too high			
too low			
neutral	+	+	+

## Electromagnetic interference fields BEFORE

	yes	no
GE 1 Silicea - strain on the EMSF		+
GE 2 Electromagnetic charging		+
GE 3 Load on radio transmitter		+



## Proband 27 LI Experimental group

### BESA 53 Testing BASIC BEFORE

Female: LI, Siberian Husky

Date of birth: 09.05.2013

Body weight: 45kg

**Health status:** 2020 prostate, castration 2021, surgical prostate abscess 2023.

In January 2025 tested for germs using BESA.

Since then he has been leaking urine, he is grumpy, sometimes aggressive, his eyesight is getting worse, he has no desire or strength to walk (only a few 100 metres), it seems as if he lacks "man power".

#### BESA Test evaluation P75 4.1.5

from **14-11-2024 to 11:15 – 11:21** (6 minutes) Pages 26 - 28

**Result:** Das MessResult indizierte teils tiefliegenden energetische Belastungen an den Meridian- Endpunkten und in weiterer Folge auf die untergeordnete Stoffwechselsituation des Probanden.

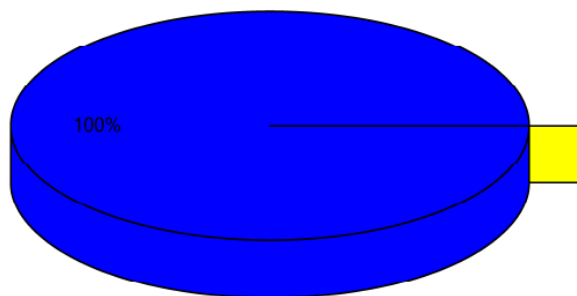
**100 % in the blue area**

**Conclusio:** As the graphs show, 100% of the measurement points are in the moderate - degenerative blue range (energy deficiency).

These measured values interpret a corresponding energy deficiency at the acupuncture points tested. The comparisons of the BESA graphs confirm the stressful influences on the energy-informative events in the subject's meridian system.



## Overview of BESA measuring



- Red: values with indicator decline  
Decline greater than 2 ()
- Yellow: high values without indicator decline  
Values over 70 ()
- Blue: low values  
Values lower 50 (100%)
- Green: standard values  
Values between 50 and 70 ()

## BESA basic test

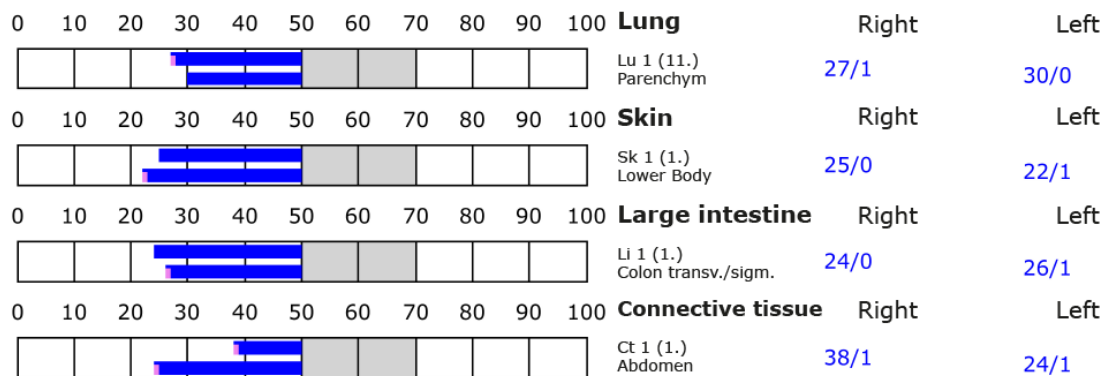
+++ : Indicator decline > 15 Skt.  
++ : Indicator decline 6-15 Skt.  
+ : Indicator decline 3-5 Skt.

T: Total inflammation (>89 Skt.)  
P: Partial inflammation (70-89 Skt.)

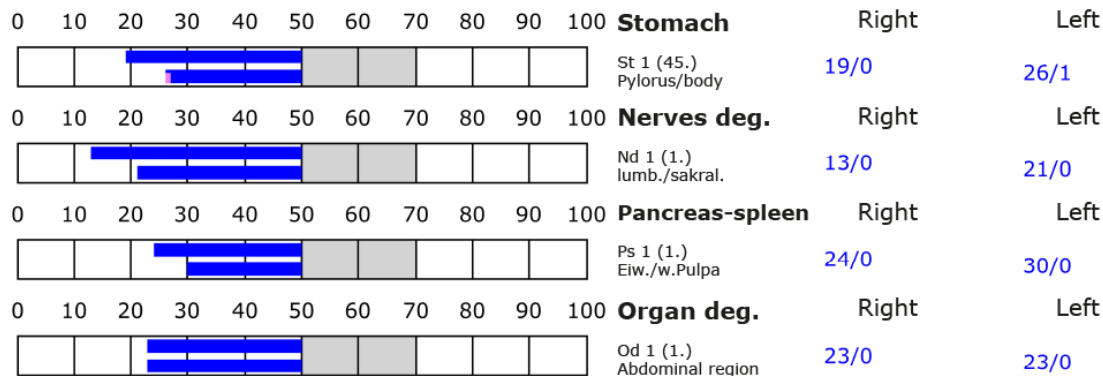
D: Degeneration (< 50 Skt.)

Standard values: (50-70 Skt.)

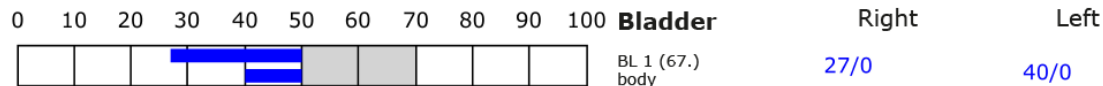
### Element: lu - sk - li - ct



### Element: st - nd - ps - od



### Element: bl - ly - ki - al







## BESA-Basismessung:

+++ : Zeigerabfall > 15 Skt.

++ : Zeigerabfall 6-15 Skt.

+ : Zeigerabfall 3-5 Skt.

T: Totale Entzündung (89 Skt.)

P: Partielle Entzündung (70-89 Skt.)

D: Degeneration (< 50 Skt.)

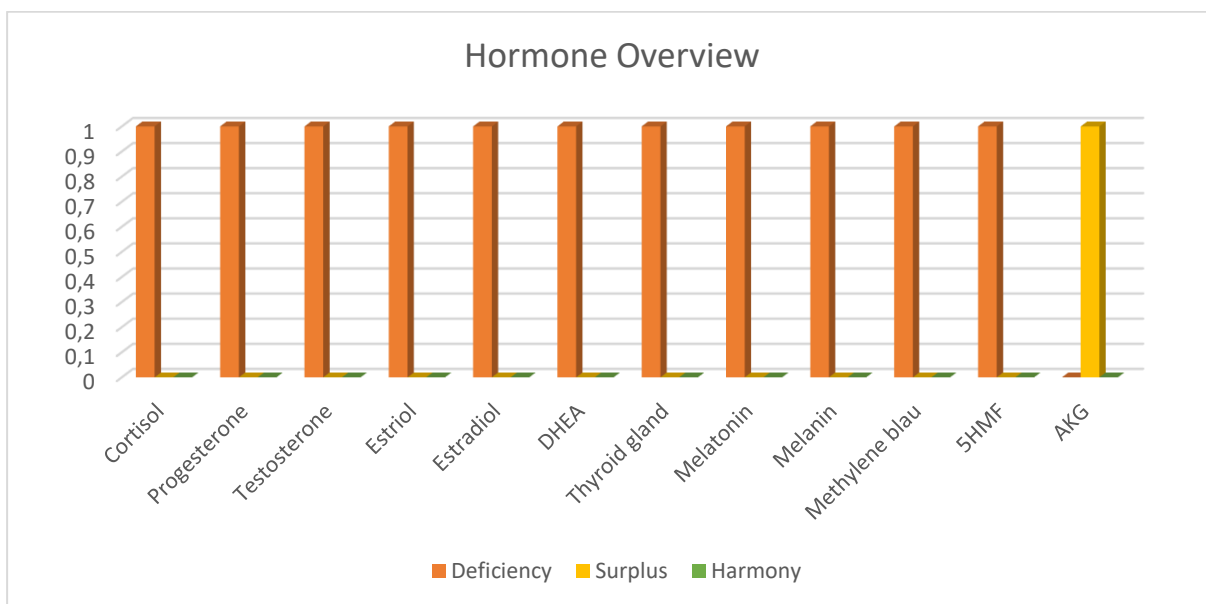
Normalwerte: (50-70 Skt.)

Element: Bl - Ly - Ni - Al			
0 10 20 30 40 50 60 70 80 90 100		<b>Lymph</b>	Rechts Links
	Ly 1 (1.) Tons.Palat.	38/1	15/0
0 10 20 30 40 50 60 70 80 90 100		<b>Niere</b>	Rechts Links
	Ni 1 (1.) Becken	32/1	27/0
0 10 20 30 40 50 60 70 80 90 100		<b>Allergie</b>	Rechts Links
	Al 1 (1.) unt.Körperab.	17/0	28/0
Element: Gbl - GD - Le - fD			
0 10 20 30 40 50 60 70 80 90 100		<b>Gallenblase</b>	Rechts Links
	Gbl 1 (44.) Duct.choled./hep.	21/0	32/1
0 10 20 30 40 50 60 70 80 90 100		<b>Gelenkdeg.</b>	Rechts Links
	GD 1 (1.) unt.Extrem.	17/0	29/1
0 10 20 30 40 50 60 70 80 90 100		<b>Leber</b>	Rechts Links
	Le 1 (1.) Zentralvenen	23/0	29/0
0 10 20 30 40 50 60 70 80 90 100		<b>fettige Deg.</b>	Rechts Links
	fD 1 (1.) Bauchraum	26/1	25/1
Element: He - Dü			
0 10 20 30 40 50 60 70 80 90 100		<b>Herz</b>	Rechts Links
	He 1 (9.) Pulm.kl./Aortenkl.	17/0	23/0
0 10 20 30 40 50 60 70 80 90 100		<b>Dünndarm</b>	Rechts Links
	Dü 1 (1.) Ileum	28/1	19/0
Element: Kr - 3E			
0 10 20 30 40 50 60 70 80 90 100		<b>Kreislauf</b>	Rechts Links
	Kr 1 (9.) SMP Arterien	22/0	34/0
0 10 20 30 40 50 60 70 80 90 100		<b>Endokrinum</b>	Rechts Links
	3E 1 (1.) Keimdr./NNI	24/1	30/1



## Hormone scheme - BEFORE

	Deficiency	Surplus	Harmony
	Hypofunction	Hyperfunction	
Cortisol	+		
Progesterone	+		
Testosteron	+		
Estriol	+		
Estradiol	+		
DHEA	+		
Thyroid gland	+		
Melatonin	+		
Melanin	+		
Methylene blue	+		
5-HMF 5-Hydroxymethylfulfural	+		
AKG Alpha-Ketoglutarat		+	



### Cortisol-Level

	Morning	Noon	Evening
Cortisol			
too high	+		
too low		+	+
neutral			

## Electromagnetic interference fields BEFORE

	yes	no
GE1 Silicea - Belastung EMSF	+	
GE 14 elektromagnetische Aufladung	+	
GE 17 Belastung d. Funksender	+	



## BESA 54 Testing AFTER

BESA-Testauswertung P75 4.1.5

from **27-01-2025 to 11:26 - 11:34** (8 minutes) pages 30 - 32

**Result:** In the BESA-NACHHER test, the measurement result shows a significant improvement in the meridian end points and the energetic state of the test person.

**100 % in the green area**

**Conclusion:** As the graphs show, around 5 weeks after using the test object, all measured values are in the optimum green range.

Even the deeply degenerative measured values improved into the optimal green range.

To summaries, the BESA test AFTER shows a strong significant improvement in the energy situation in the subject's meridian system compared to the BESA 1 tests BEFORE.

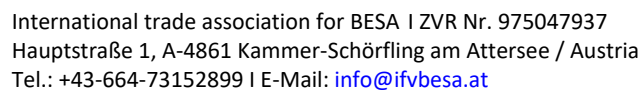
The comparisons of the BESA graphs confirm the change or harmonization of the stress factors in the meridian system.

### **State of health:**

In January 2025, BESA was used to test for germs - no more germs were detected.

Since the confrontation with the Quantum Upgrade, he has also stopped leaking urine. He is in a good mood again, is more agile and also looks friendly again. The paralyses which (BESA tested from the spinal column) seem to have been resolved. He has regained the desire and strength to play outside or go for a walk. There is currently no sign of a lack of manhood.

No symptoms that indicate kidney problems.



A 3D pie chart representing 100%. The chart is a cylinder with a green top surface and a blue side surface. A line points from the text '100%' to the blue side surface.

- Red: values with indicator decline  
Decline greater than 2 (%)
- Yellow: high values without indicator decline  
Values over 70 (%)
- Blue: low values  
Values lower 50 (%)
- Green: standard values  
Values between 50 and 70 (100%)

- +++ : Indicator decline > 15 Skt.
- ++ : Indicator decline 6-15 Skt.
- +: Indicator decline 3-5 Skt.

T: Total inflammation (>89 Skt.)  
P: Partial inflammation (70-89 Skt.)

D: Degeneration (< 50 Skt.)

Standard values: (50-70 Skt.)

											Right	Left
											51/0	57/0
											55/1	51/1
											52/2	55/0
											51/0	52/1

											Right	Left	
<div> <div>0102030405060708090100</div> <div> </div> </div>											St 1 (45.) Pylorus/body	51/1	51/0
<div> <div>0102030405060708090100</div> <div> </div> </div>											Nd 1 (1.) lumb./sakral.	52/1	58/1
<div> <div>0102030405060708090100</div> <div> </div> </div>											Ps 1 (1.) Eiw./w.Pulpa	51/0	55/0
<div> <div>0102030405060708090100</div> <div> </div> </div>											Od 1 (1.) Abdominal region	51/0	51/0

0 10 20 30 40 50 60 70 80 90 100 **Bladder** Right Left

BL 1 (67.)  
body 51/0 52/1



## BESA basic test

+++ Indicator decline > 15 Skt.

++ Indicator decline 6-15 Skt.

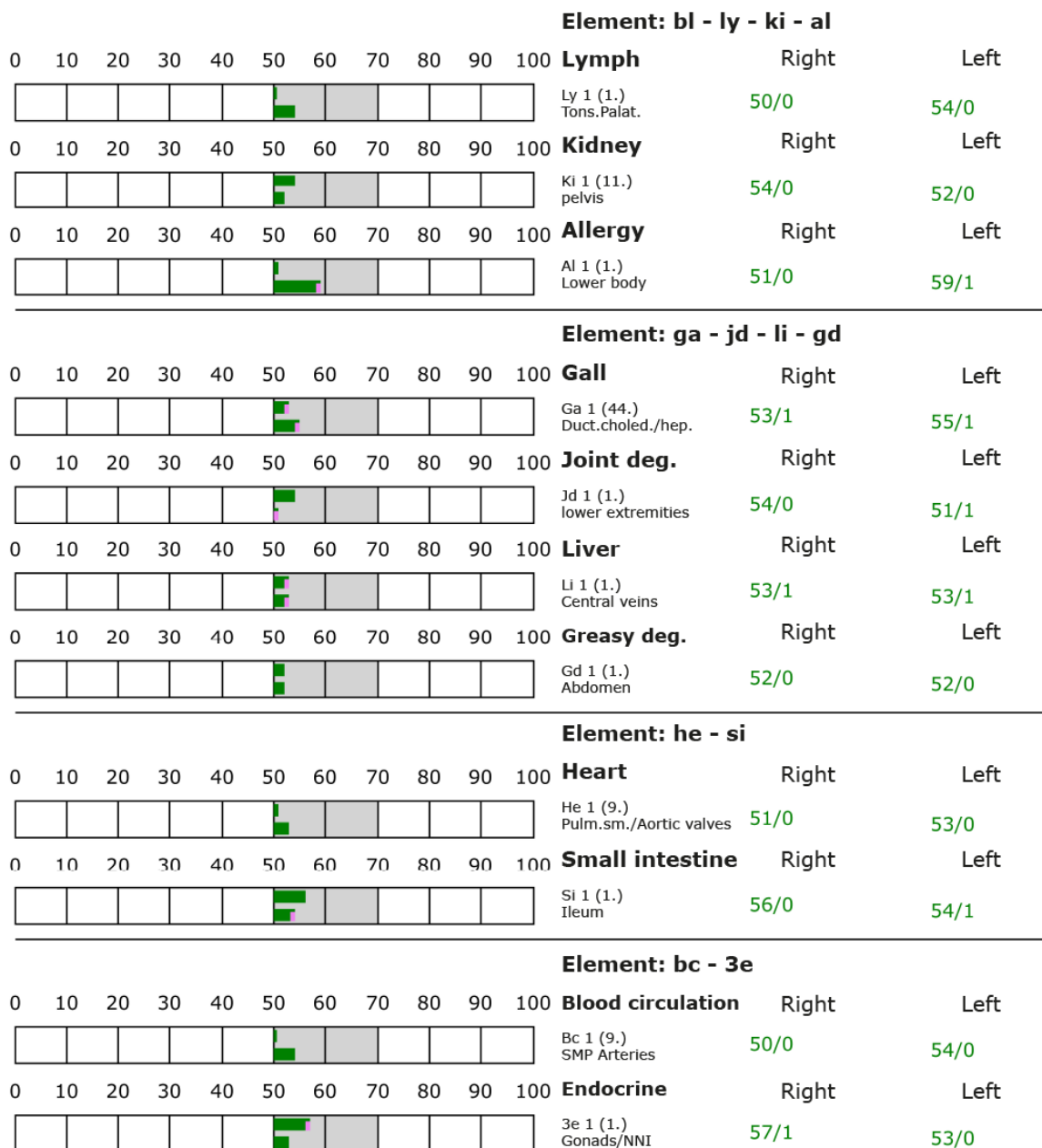
+ Indicator decline 3-5 Skt.

T: Total inflammation (>89 Skt.)

P: Partial inflammation (70-89 Skt.)

D: Degeneration (< 50 Skt.)

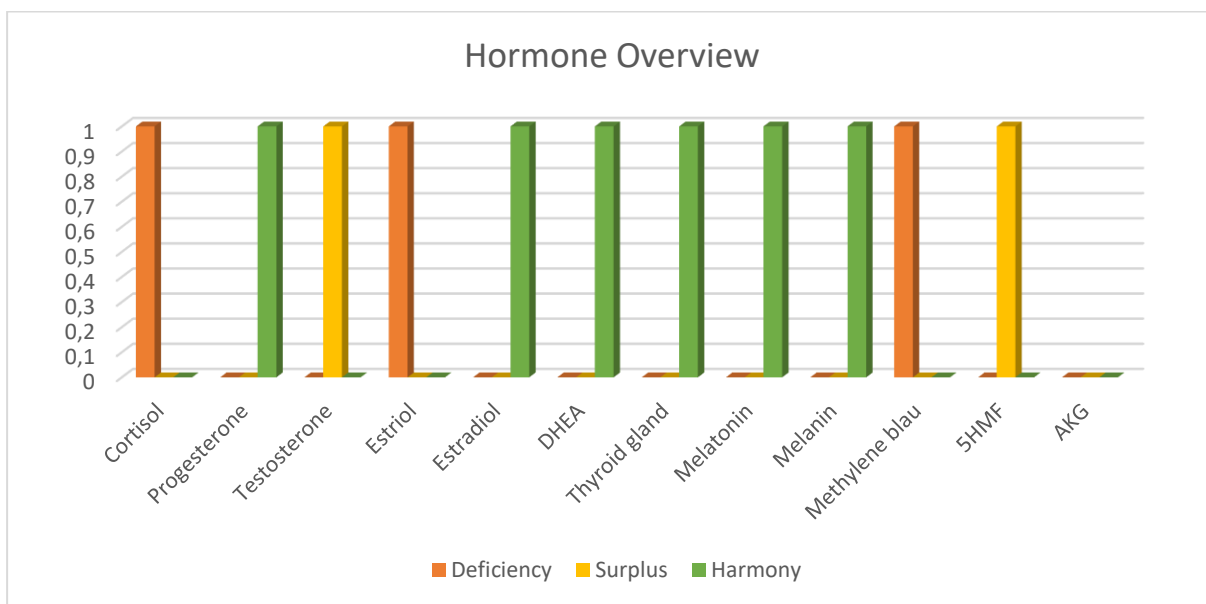
Standard values: (50-70 Skt.)





## Hormone scheme - AFTER

	Deficiency	Surplus	Harmony
	Hypofunction	Hyperfunction	
Cortisol	+		
Progesterone			+
Testosteron		+	
Estriol			+
Estradiol			+
DHEA			+
Thyroid gland			+
Melatonin			+
Melanin			+
Methylene blue	+		
5-HMF		+	
5-Hydroxymethylfulfural			
AKG			+
Alpha-Ketoglutarat			



### Cortisol-Level

	Morning	Noon	Evening
Cortisol			
too high	+		
too low			
neutral		+	+

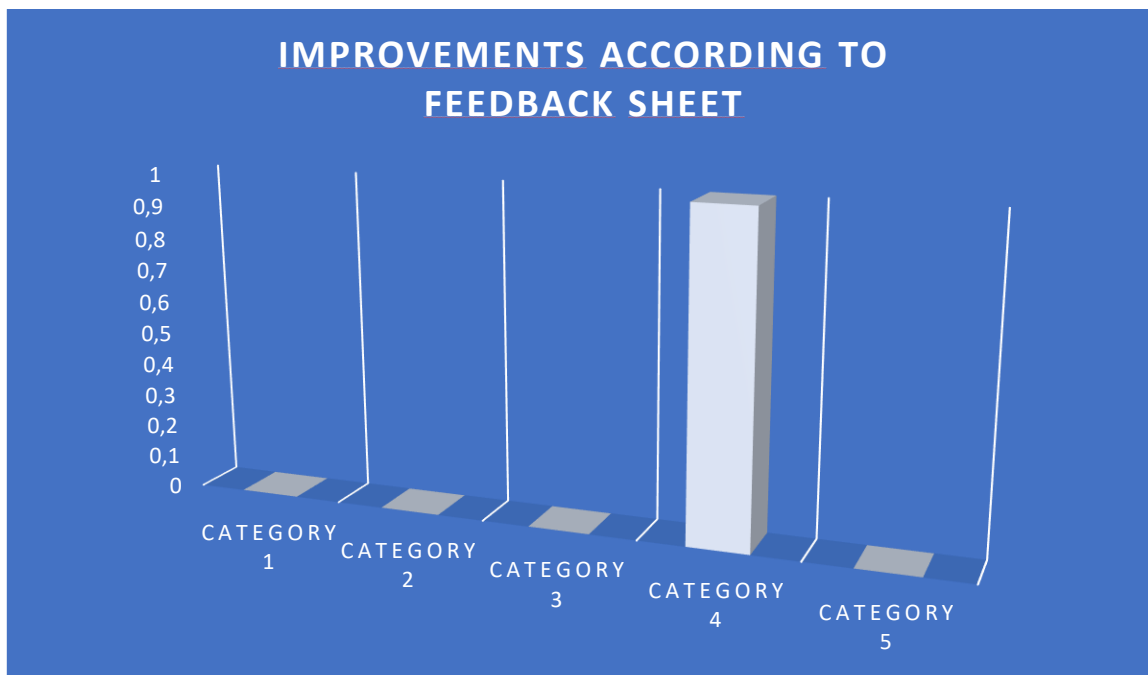
## Electromagnetic interference fields AFTER

	yes	no
GE 1 Silicea	+	
GE 2 Electromagnetic charging		+
GE 3 Funksender		+





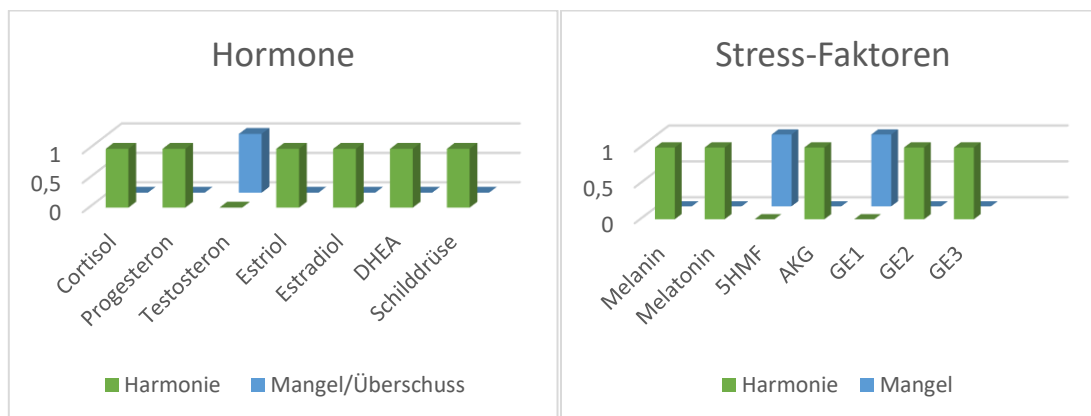
## Feedback form on the experience with the test object



Collection of essential data and research results with regard to the effectiveness of the test object specified in the project description and project design on the energy-informational and physical system of the respective dog.

The animal owner then described in detail all positive (life-enhancing) and negative (life-hindering) experiences on a scale of 0-5.

<b>Category 1 (1-3)</b>	no change - slight temporary effects
<b>Category 2 (4-6)</b>	slight changes - noticeable short phases of improvement
<b>Category 3 (7-9)</b>	moderate improvements - longer phases of freedom from symptoms
<b>Category 4 (10-12)</b>	strong improvements - lasting freedom from symptoms
<b>Category 5 (13)</b>	complete regulation or elimination/elimination of problems, symptoms, pathogens





## Proband 28 BA Experimental group

### BESA 55 Testing BASIC BEFORE

Female: BA, Hovawart  
Date of birth: 28.04.2015  
Body weight: 52kg

**Health condition:**

2023 was diagnosed with a heart condition. Thereupon surgery of the spleen (removal of a benign tumour). After that, the heart problems worsened, blood pressure increased, since then the heart valve no longer closes properly - shortness of breath. Must take medication take medication. Joint pain - the liver is the nourisher of the tendons and joints! Increased BASIC STRESS was tested via BESA. Trigger electromagnetic interference fields! Melanin deficiency - oxidative stress (connective tissue and in the brain)

#### BESA Test evaluation P75 4.1.5

from **14-12-2024 to 19:37 – 19:42** (5 minutes) Pages 35 - 37

**Result:** The measurement result indicated partly deep-seated energetic stresses at the meridian end points and subsequently on the subordinate metabolic situation of the test person.

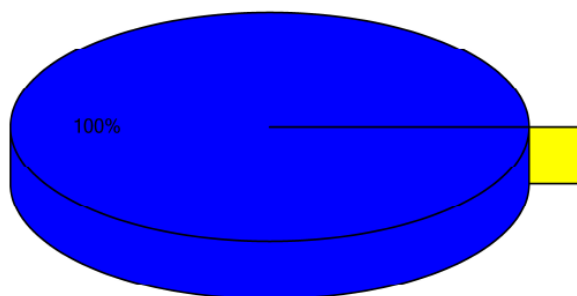
**100 % in the blue area**

**Conclusion:** As the graphs show, 100% of the measurement points are in the moderate - degenerative blue range (energy deficiency).

These measured values interpret a corresponding energy deficiency at the acupuncture points tested. The comparisons of the BESA graphs confirm the stressful influences on the energy-informative events in the subject's meridian system.



## Overview of BESA measuring



- Red: values with indicator decline  
Decline greater than 2 ( )
- Yellow: high values without indicator decline  
Values over 70 ( )
- Blue: low values  
Values lower 50 (100%)
- Green: standard values  
Values between 50 and 70 ( )

## BESA basic test

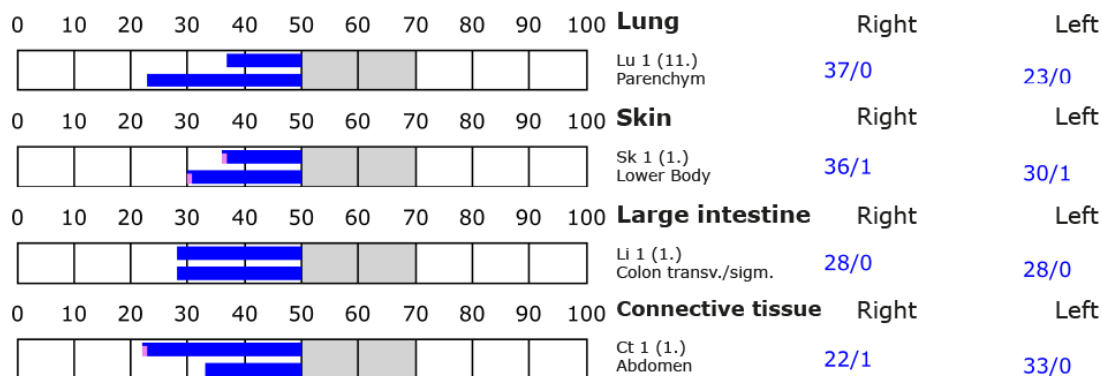
+++ : Indicator decline > 15 Skt.  
++ : Indicator decline 6-15 Skt.  
+ : Indicator decline 3-5 Skt.

T: Total inflammation (>89 Skt.)  
P: Partial inflammation (70-89 Skt.)

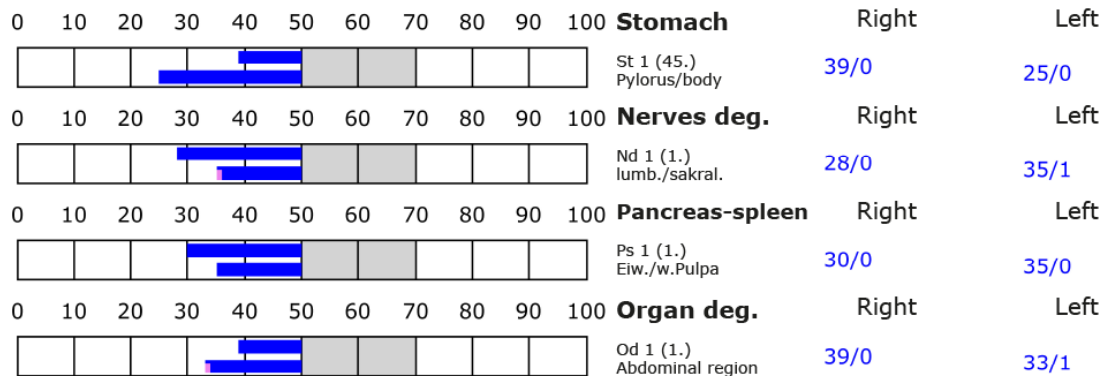
D: Degeneration (< 50 Skt.)

Standard values: (50-70 Skt.)

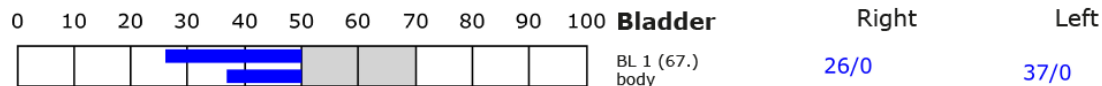
### Element: lu - sk - li - ct



### Element: st - nd - ps - od



### Element: bl - ly - ki - al





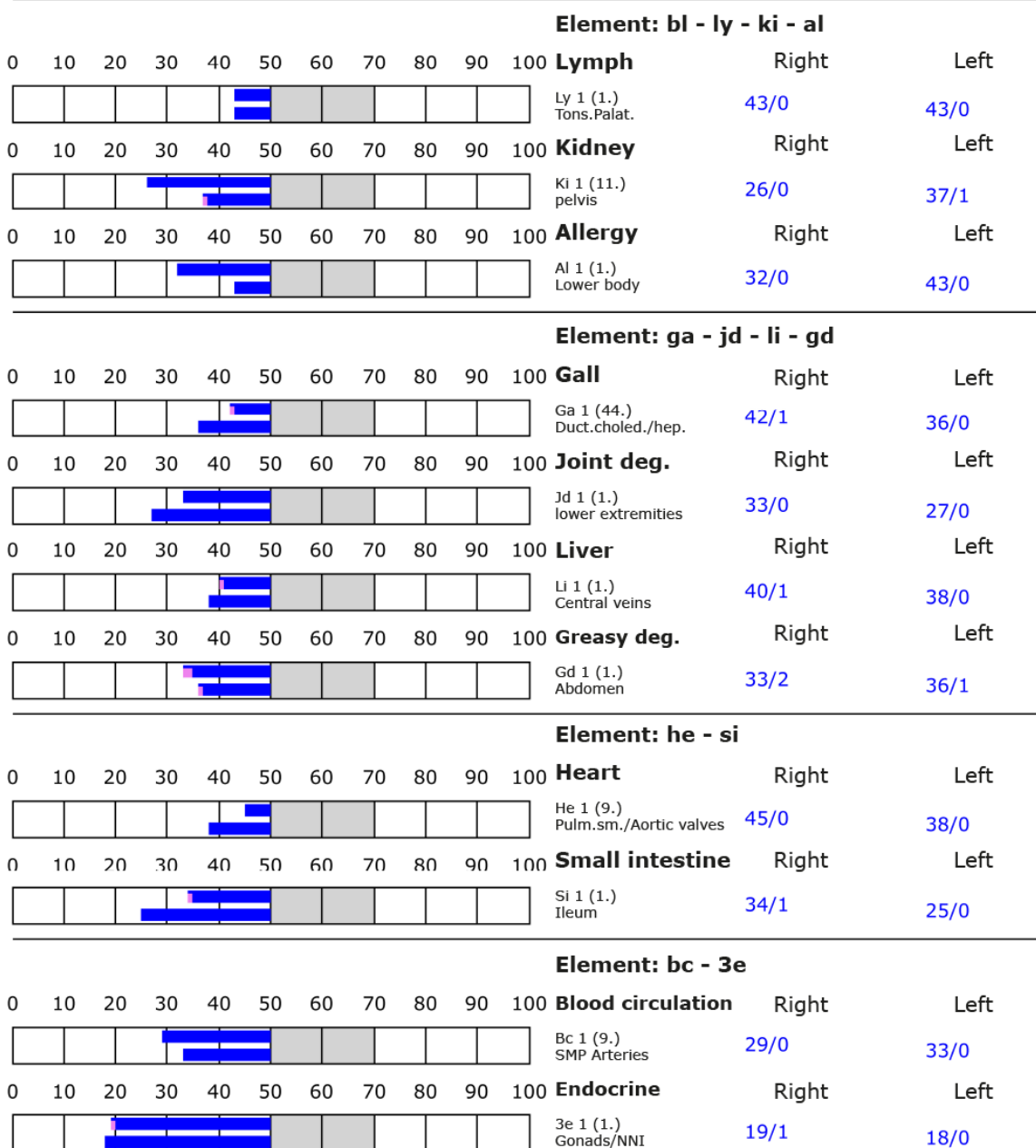
## BESA basic test

+++ : Indicator decline > 15 Skt.  
++ : Indicator decline 6-15 Skt.  
+ : Indicator decline 3-5 Skt.

T: Total inflammation (>89 Skt.)  
P: Partial inflammation (70-89 Skt.)

D: Degeneration (< 50 Skt.)

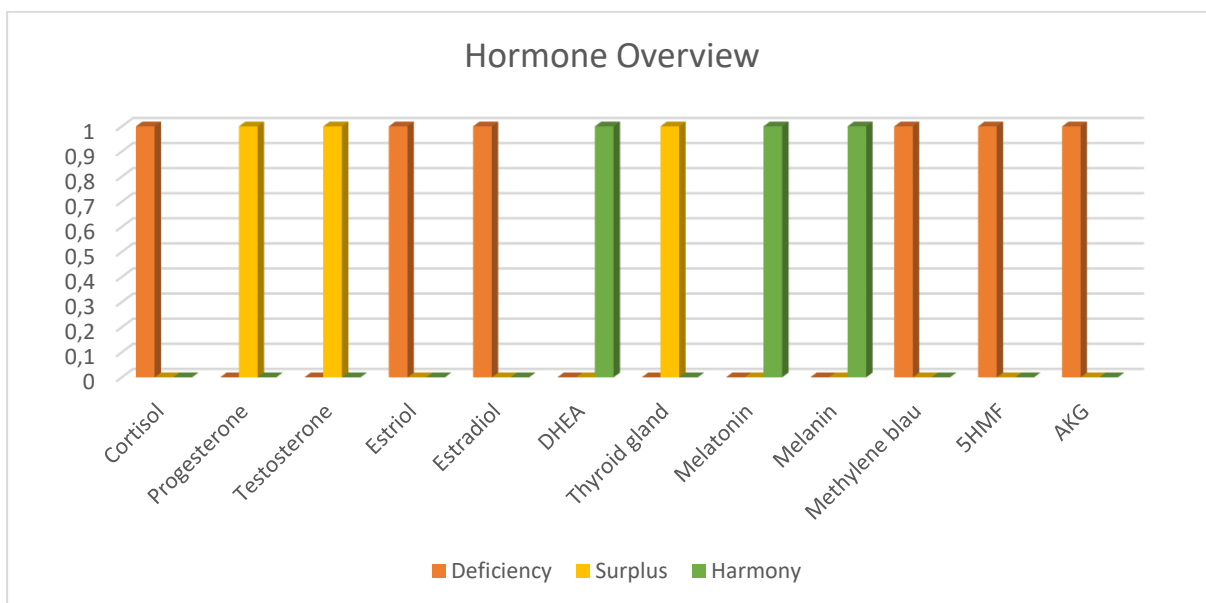
Standard values: (50-70 Skt.)





## Hormone scheme - BEFORE

	Deficiency	Surplus	Harmony
	Hypofunction	Hyperfunction	
Cortisol	+		
Progesterone		+	
Testosteron		+	
Estriol	+		
Estradiol	+		
DHEA			+
Thyroid gland		+	+
Melatonin			+
Melanin			+
Methylene blue	+		
5-HMF	+		
5-Hydroxymethylfulfural			
AKG	+		
Alpha-Ketoglutarat			



### Cortisol-Level

	Morning	Noon	Evening
Cortisol			
too high	+	+	
too low			+
neutral			

## Electromagnetic interference fields BEFORE

	yes	no
GE1 Silicea	+	
GE 14 elektromagnetische Aufladung	+	
GE 17 Funksender	+	



## BESA 56 Testing AFTER

BESA-Test evaluation P75 4.1.4

from **14-12-2024 to 19:51 - 19:57** (6 minutes) pages 39 - 42

**Result:** In the BESA-NACHHER test, the measurement result shows a significant improvement in the meridian end points and the energetic state of the test person.

**100 % in the green area**

**Conclusion:** As the graphs show, around 5 weeks after using the test object, all measured values are in the optimum green range.

Even the deeply degenerative measured values improved into the optimal green range.

To summarize, the BESA test AFTER shows a strong significant improvement in the energy situation in the subject's meridian system compared to the BESA 1 tests BEFORE.

The comparisons of the BESA graphs confirm the change or harmonization of the stress factors in the meridian system.

### State of health:

Medication was discontinued continuously after 2 weeks

no more shortness of breath

no more joint pain - regulation of the liver!

Blood pressure ok since then, heart valve ok no more shortness of breath

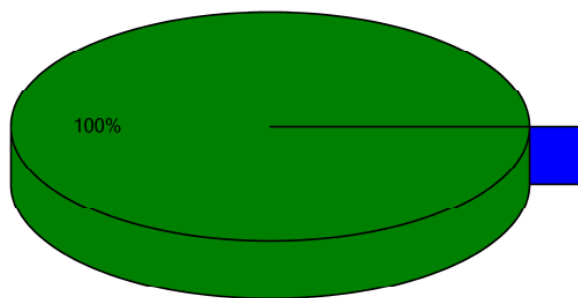
Increased BASIC STRESS was tested via BESA. Trigger electromagnetic interference fields!

No more exposure to electromagnetic fields

no melanin deficiency, - no oxidative stress detectable



## Overview of BESA measuring



- Red: values with indicator decline  
Decline greater than 2 ( )
- Yellow: high values without indicator decline  
Values over 70 ( )
- Blue: low values  
Values lower 50 ( )
- Green: standard values  
Values between 50 and 70 (100%)

## BESA basic test

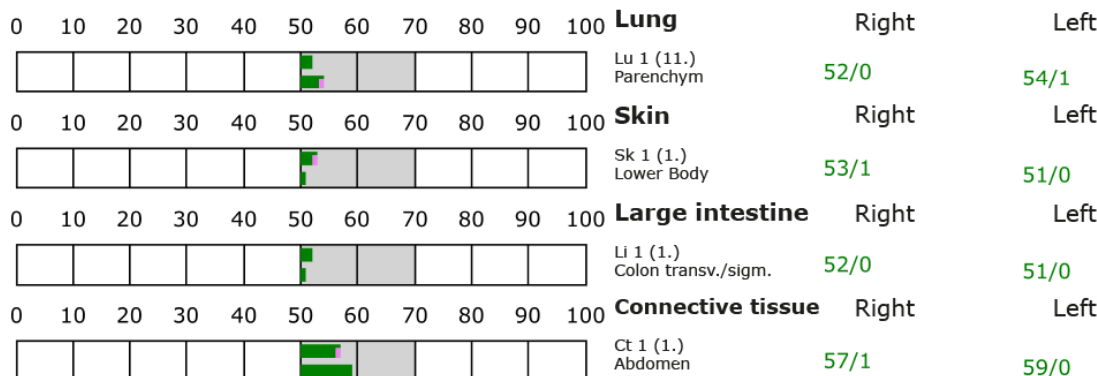
+++ : Indicator decline > 15 Skt.  
++ : Indicator decline 6-15 Skt.  
+ : Indicator decline 3-5 Skt.

T: Total inflammation (>89 Skt.)  
P: Partial inflammation (70-89 Skt.)

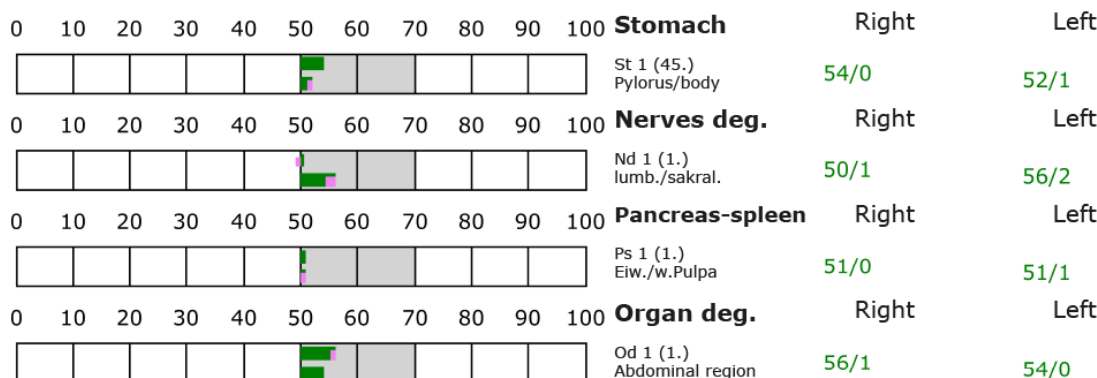
D: Degeneration (< 50 Skt.)

Standard values: (50-70 Skt.)

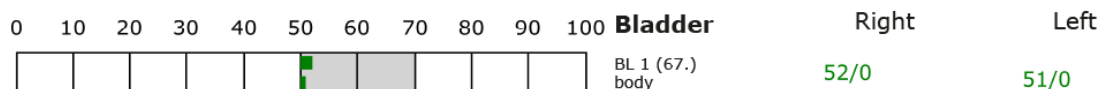
### Element: lu - sk - li - ct



### Element: st - nd - ps - od



### Element: bl - ly - ki - al







## BESA basic test

+++ : Indicator decline > 15 Skt.

++ : Indicator decline 6-15 Skt.

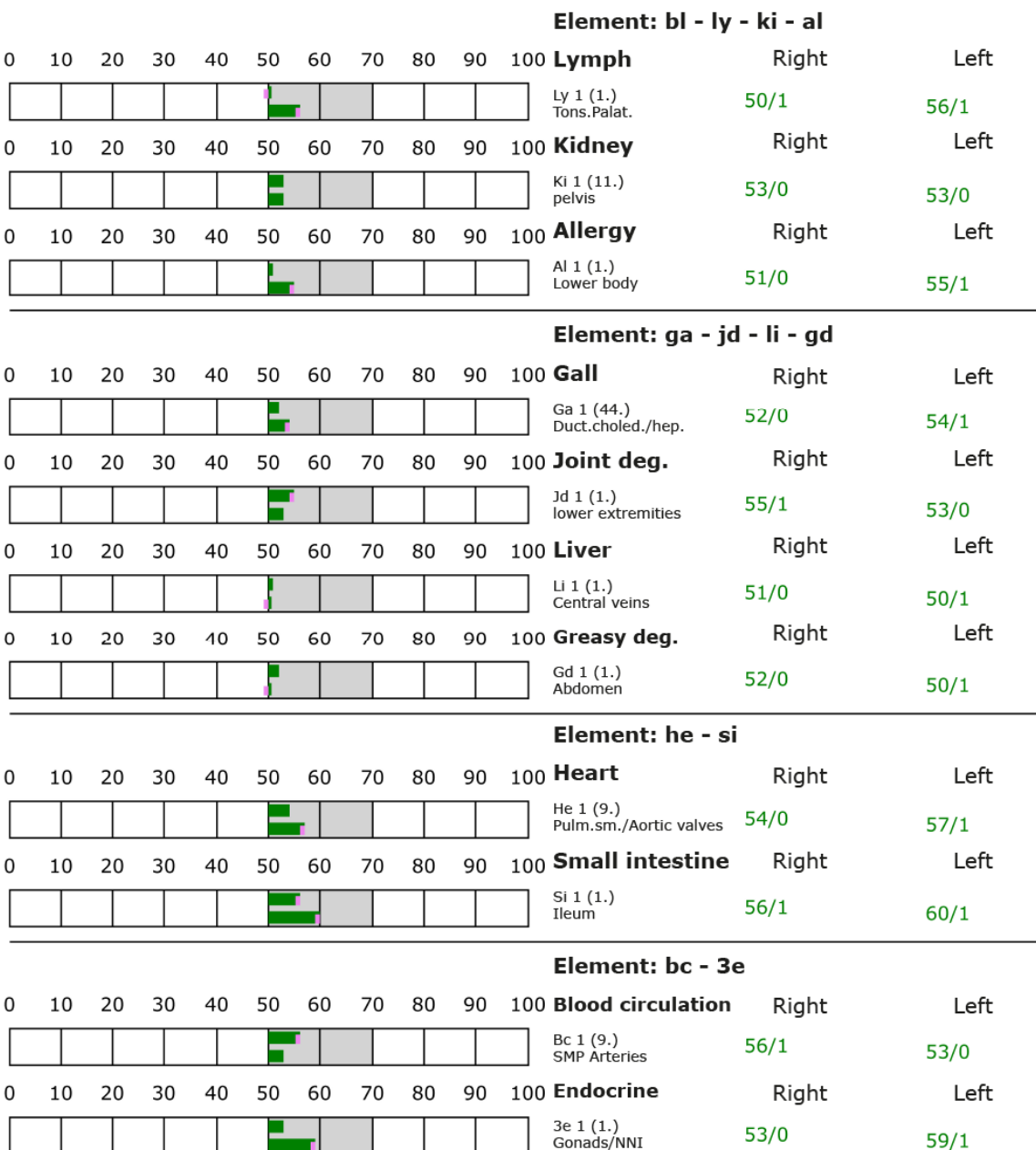
+ : Indicator decline 3-5 Skt.

T: Total inflammation (>89 Skt.)

P: Partial inflammation (70-89 Skt.)

D: Degeneration (< 50 Skt.)

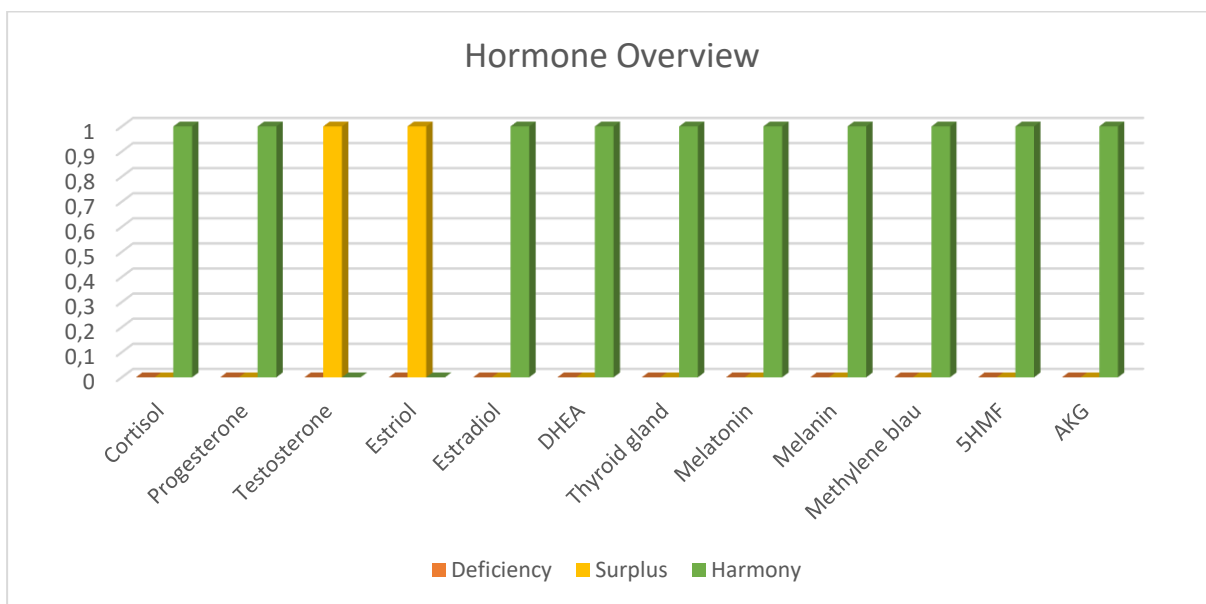
Standard values: (50-70 Skt.)





## Hormone scheme - AFTER

	Deficiency	Surplus	Harmony
	Hypofunction	Hyperfunction	
Cortisol			+
Progesterone			+
Testosteron		+	
Estriol		+	
Estradiol			+
DHEA			+
Thyroid gland			
Melatonin			+
Melanin			+
Methylene blue			+
5-HMF			+
5-Hydroxymethylfulfural			
AKG			+
Alpha-Ketoglutarat			



### Cortisol-Level

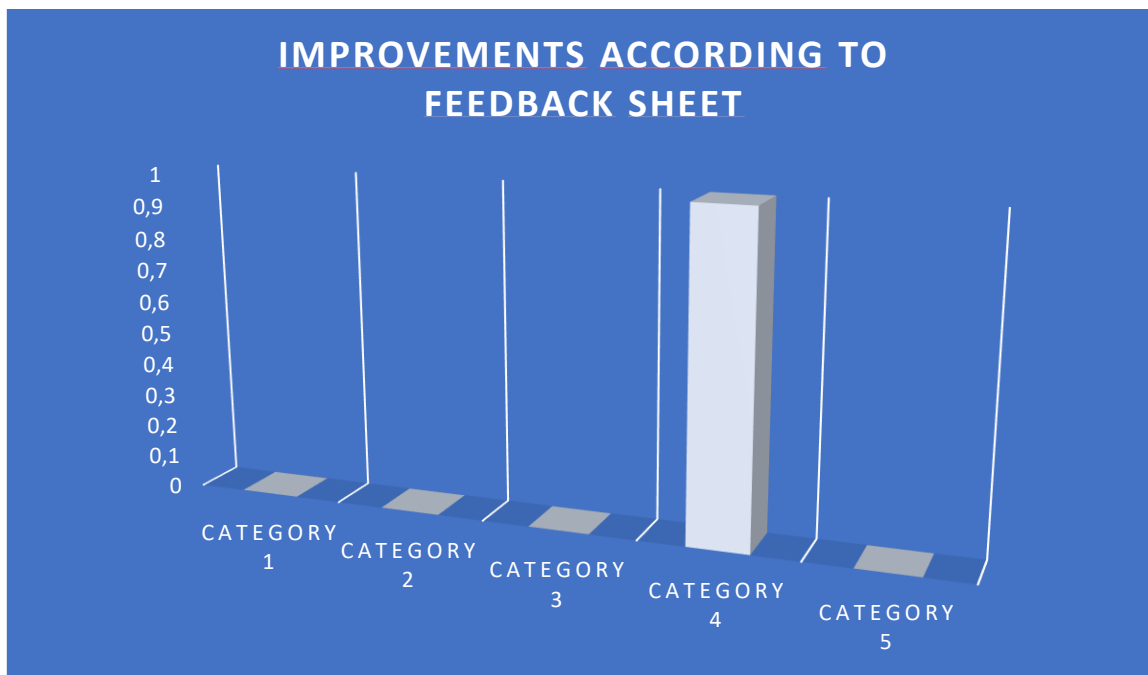
	Morning	Noon	Evening
Cortisol			
too high			
too low		+	
neutral	+		+

### Electromagnetic interference fields AFTER

	yes	no
GE 1 Silicea – Loads EMSF		+
GE 2 Electromagnetic charging		+
GE 3 Load on radio transmitter		+



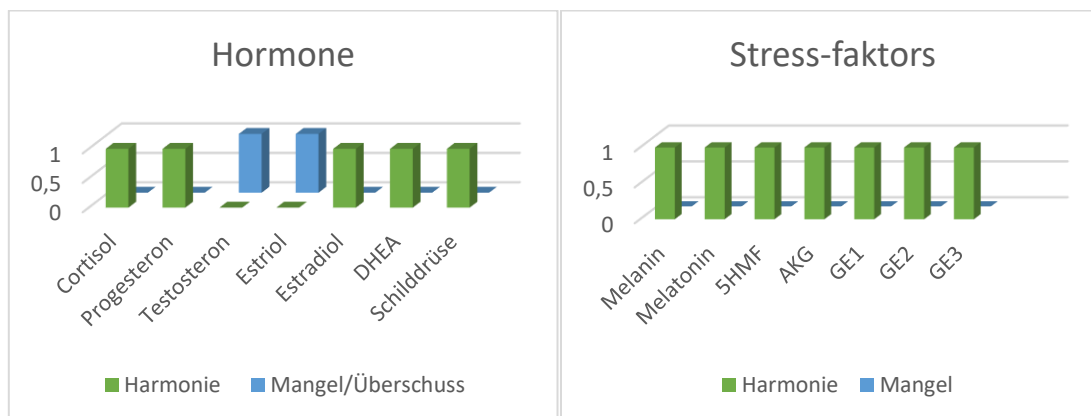
## Feedback form on the experience with the test object



Collection of essential data and research results with regard to the effectiveness of the test object specified in the project description and project design on the energy-informational and physical system of the respective dog.

The animal owner then described in detail all positive (life-enhancing) and negative (life-hindering) experiences on a scale of 0-5.

- |                           |   |
|---------------------------|---|
| <b>Category 1 (1-3)</b>   | no change - slight temporary effects  |
| <b>Category 2 (4-6)</b>   | slight changes - noticeable short phases of improvement                         |
| <b>Category 3 (7-9)</b>   | moderate improvements - longer phases of freedom from symptoms                  |
| <b>Category 4 (10-12)</b> | strong improvements - lasting freedom from symptoms                             |
| <b>Category 5 (13)</b>    | complete regulation or elimination/elimination of problems, symptoms, pathogens |





## Proband 29 C2 CORA

### Experimental group

## BESA 57 Testing BASIC 2 AFTER

Female: CY, mixed breed  
Date of birth: 17/08/2022  
Body weight: approx. 4,9kg

#### **Health condition:** serious illness!

Cara was originally drawn into the control group (see project description P75 4.1.3 Proband 16). These were very difficult 4 weeks for the bitch, as nobody knew whether she would be in the experimental group or the control group.

With regard to her symptoms and state of health, it can be said that there was a short-term improvement in the control group.

After that, the old picture emerged again with the typical severe symptoms as follows:

- Still lacking in energy, severe coordination disorders.
- Still severe, recurrent ear infection, with adhesions in the ear.
- Recurrent accumulation of fluid in the chest/chest cavity, which is still
- must be regularly aspirated through a valve under anaesthetic.
- Trigger => tested via BESA: Borrelia and recognisable in DF =>
- inflammatory processes, parasites.
- Pain, seems barely able to survive, blood collection always difficult.
- Since birth 2 Yeshren diabetes 1, mitochondrial disorders-coordination problems (BG),
- Visual impairment, now shy towards people.

#### In the Quantum Upgrade:

At the end of the project period, Cora joined the experimental group, i.e. the Quantum Upgrade incl. the frequency "H.E.A.L 360 for Dogs" during the day and in the evening and night.

#### **Symptoms - state of health:**

- Extensive improvement of all symptoms within 3 weeks!
- No trace of lack of energy or significant coordination disorders.
- The severe, recurrent ear infection has subsided. Adhesions in the ear are still present, but they are becoming less and less.
- No more recurring fluid accumulations in the chest/chest cavity. No more aspirations since then!
- Borrelia could not be detected afterwards either via BESA or in the DF. Slight
- inflammatory processes are still recognisable in the vital blood of the dark field microscopy.
- (reducing) as well as the parasites.



- The bitch was already lean before, but has lost some more weight as a result of the Quantum Upgrade, which can be attributed to strong detoxification reactions.
- The dog is now highly cognitive and reacts very intensively to her owner and the people around her.
- She also looks like a new dog and has the appearance of a certain wisdom.
- Currently no sign of pain.
- It seems as if the visual impairment has also been regulated,
- Diabetes still exists

#### BESA Test evaluation P75 4.1.5

from **25-01-2025 to 11:27 – 11:32** (5 minutes) pages 45 - 48

**Result:** In the BESA-NACHHER test, the measurement result shows a significant improvement in the meridian end points and the energetic state of the test person.

**100 % in the green area**

**Conclusion:** As the graphs show, around 3 weeks after using the test object, all measured values are in the optimum green range.

Even the deeply degenerative measured values improved into the optimal green range.

To summarise, the BESA test AFTER shows a strong significant improvement in the energy situation in the subject's meridian system compared to the BESA 1 tests BEFORE.

The comparisons of the BESA graphs confirm the change or harmonisation of the stress factors in the meridian system. The regulative behaviour of the BESA individual tests on pages 47 - 48 is also impressive.

**State of health see pages 43**

Before

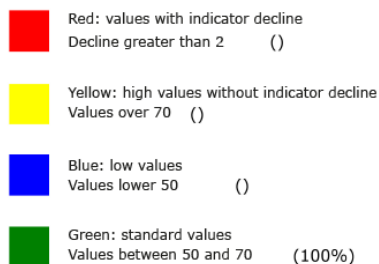
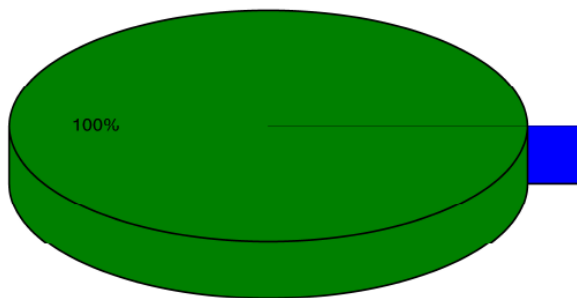


After





## Overview of BESA measuring



## BESA basic test

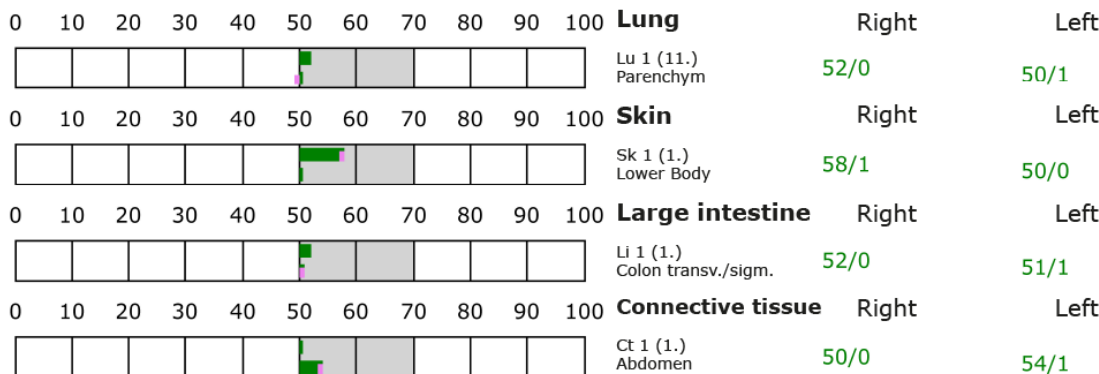
+++ : Indicator decline > 15 Skt.  
++ : Indicator decline 6-15 Skt.  
+ : Indicator decline 3-5 Skt.

T: Total inflammation (>89 Skt.)  
P: Partial inflammation (70-89 Skt.)

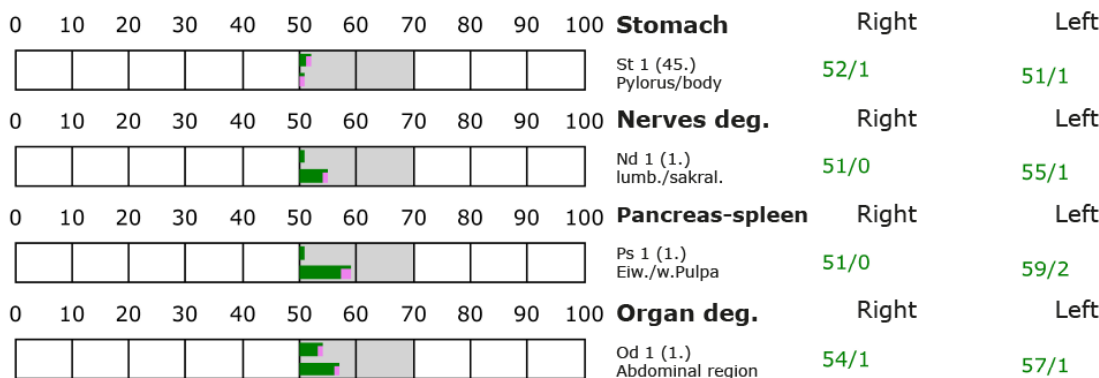
D: Degeneration (< 50 Skt.)

Standard values: (50-70 Skt.)

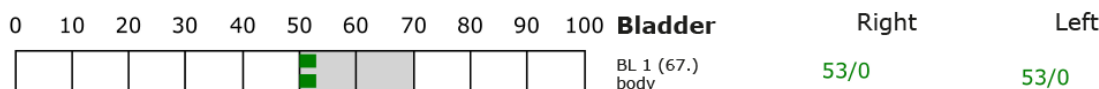
### Element: lu - sk - li - ct



### Element: st - nd - ps - od



### Element: bl - ly - ki - al





## BESA basic test

+++ : Indicator decline > 15 Skt.  
++ : Indicator decline 6-15 Skt.  
+ : Indicator decline 3-5 Skt.

T: Total inflammation (>89 Skt.)  
P: Partial inflammation (70-89 Skt.)

D: Degeneration (< 50 Skt.)

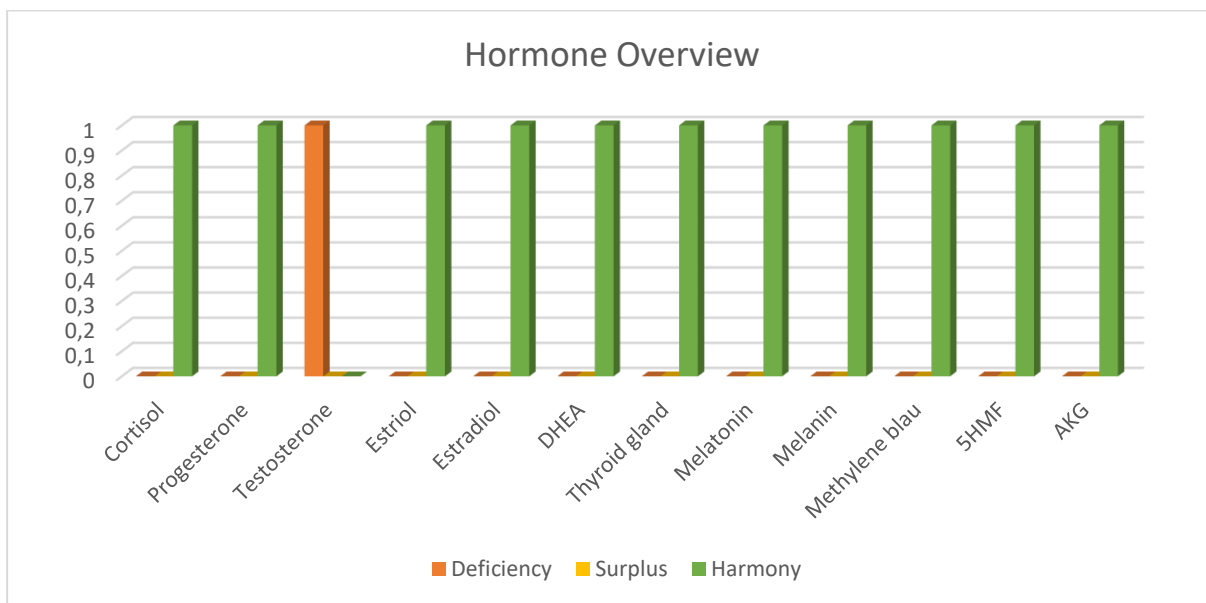
Standard values: (50-70 Skt.)

Element: bl - ly - ki - al										
0	10	20	30	40	50	60	70	80	90	100



## Hormone scheme - AFTER

	Deficiency	Surplus	Harmony
	Hypofunction	Hyperfunction	
Cortisol			+
Progesterone			+
Testosteron	+		
Estriol			+
Estradiol			+
DHEA			+
Thyroid gland			
Melatonin			+
Melanin			+
Methylene blue			+
5-HMF 5-Hydroxymethylfulfural			+
AKG Alpha-Ketoglutarat			+



### Cortisol-Level

	Morning	Noon	Evening
Cortisol			
too high			
too low			
neutral	+	+	+

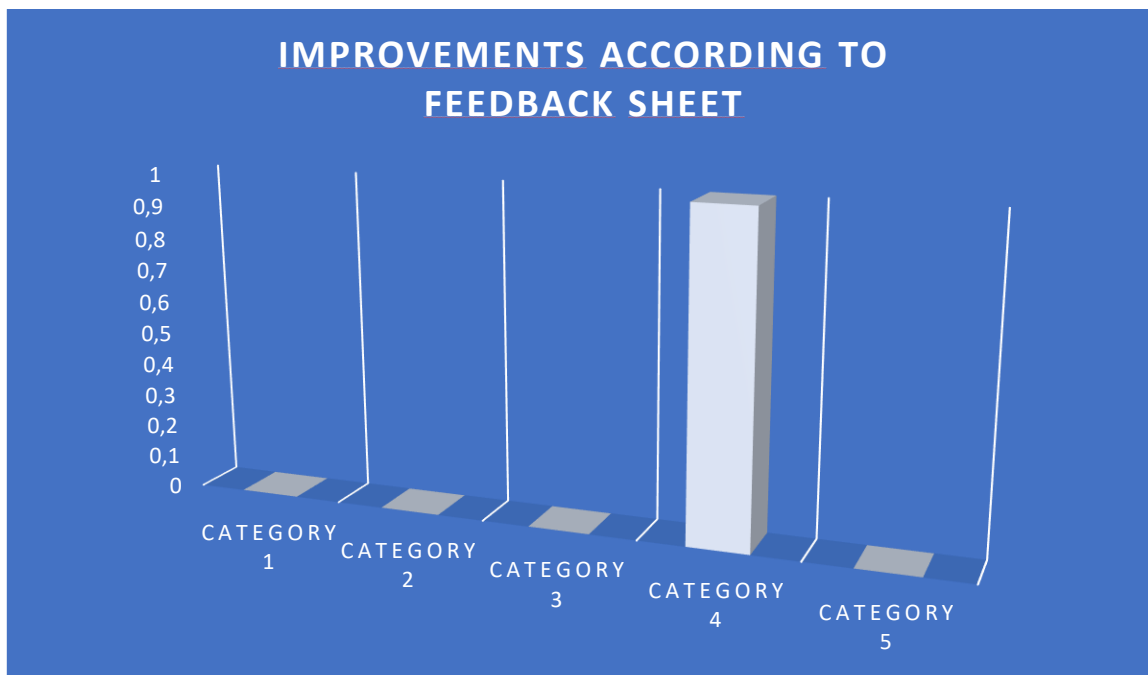
## Electromagnetic interference fields AFTER

	yes	no
GE 1 Silicea – Loads EMSF		+
GE 2 Electromagnetic charging		+
GE 3 Load on radio transmitter		+





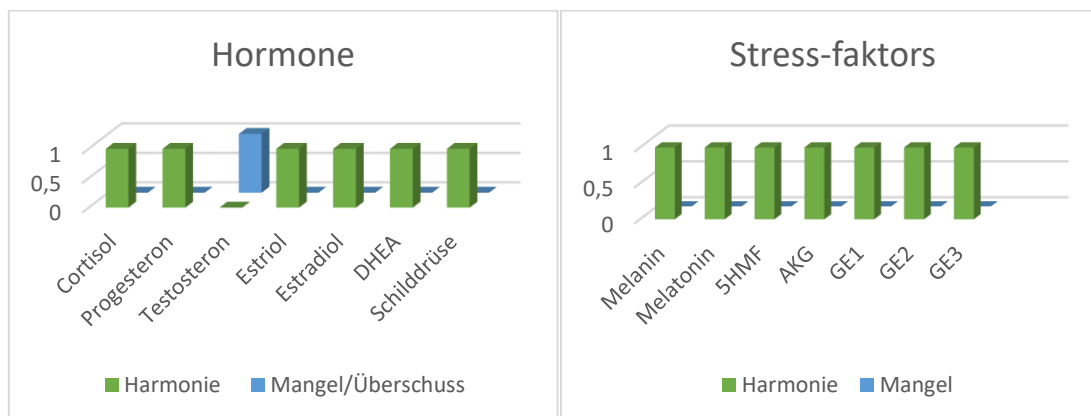
## Feedback form on the experience with the test object



Collection of essential data and research results with regard to the effectiveness of the test object specified in the project description and project design on the energy-informational and physical system of the respective dog.

The animal owner then described in detail all positive (life-enhancing) and negative (life-hindering) experiences on a scale of 0-5.

- |                           |   |
|---------------------------|---|
| <b>Category 1 (1-3)</b>   | no change - slight temporary effects  |
| <b>Category 2 (4-6)</b>   | slight changes - noticeable short phases of improvement                         |
| <b>Category 3 (7-9)</b>   | moderate improvements - longer phases of freedom from symptoms                  |
| <b>Category 4 (10-12)</b> | strong improvements - lasting freedom from symptoms                             |
| <b>Category 5 (13)</b>    | complete regulation or elimination/elimination of problems, symptoms, pathogens |





## Proband 30 FM F2 FINROD

### Experimental group

## BESA 59 Testung BASIC 2 AFTER

Dog: FM, Golden Retriever

Date of birth: 05.2016

Body weight: 20kg

#### Health condition:

no significant health challenges. Under the right shoulder a lipoma has formed (benign nodular accumulation of fatty tissue located directly under the skin). of fatty tissue located directly under the skin. In contrast to malignant tumours, such as liposarcoma, lipomas are elastic lumps that can be moved under the skin). movable under the skin). Is somewhat shy of strangers.

#### BESA Test evaluation P75 4.1.4

from **09-11-2024 to 11:43 – 11:48** (5 Minutes) Pages 51 - 53

**Result:** In the BESA-NACHHER test, the measurement result shows a significant improvement in the meridian end points and the energetic state of the test person.

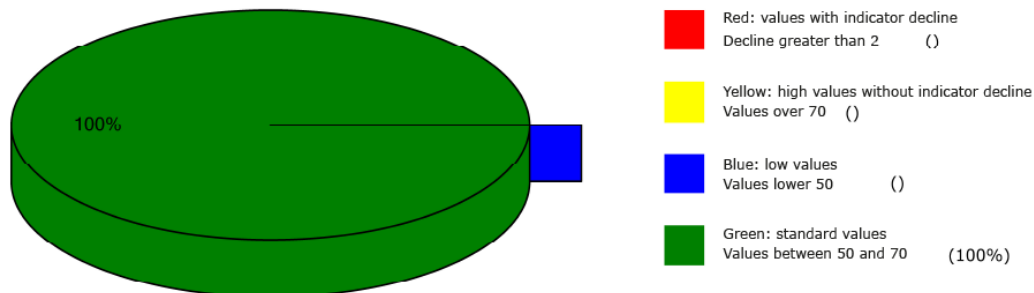
#### 100 % in the green area

**Conclusion:** As the graphs show, around 3 weeks after using the test object, all measured values are in the optimum, green range.

To summarise, the BESA test 2 AFTER shows a strong significant improvement in the energy situation in the subject's meridian system compared to the BESA 1 tests BEFORE and AFTER from the control group. The comparisons of the BESA graphs confirm the change or harmonisation of the stress factors in the meridian system. The regulative behaviour of the BESA individual tests on pages 50 - 53 is also impressive.



## Overview of BESA measuring



## BESA basic test

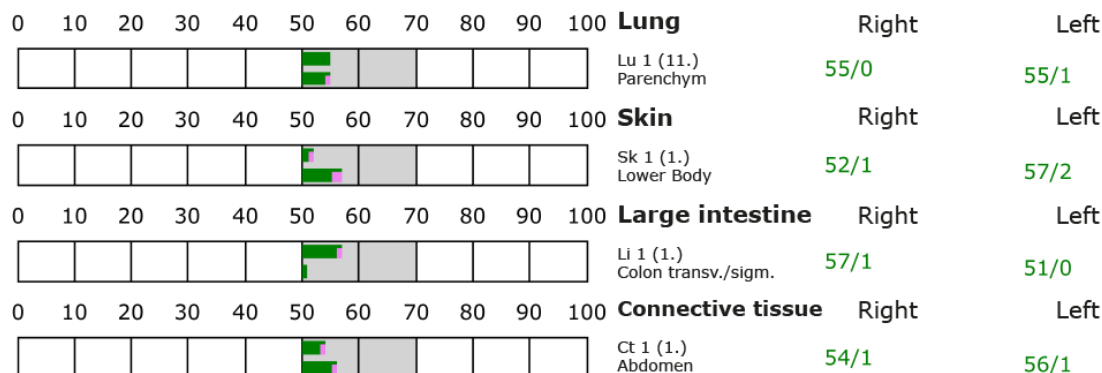
+++ : Indicator decline > 15 Skt.  
++ : Indicator decline 6-15 Skt.  
+ : Indicator decline 3-5 Skt.

T: Total inflammation (>89 Skt.)  
P: Partial inflammation (70-89 Skt.)

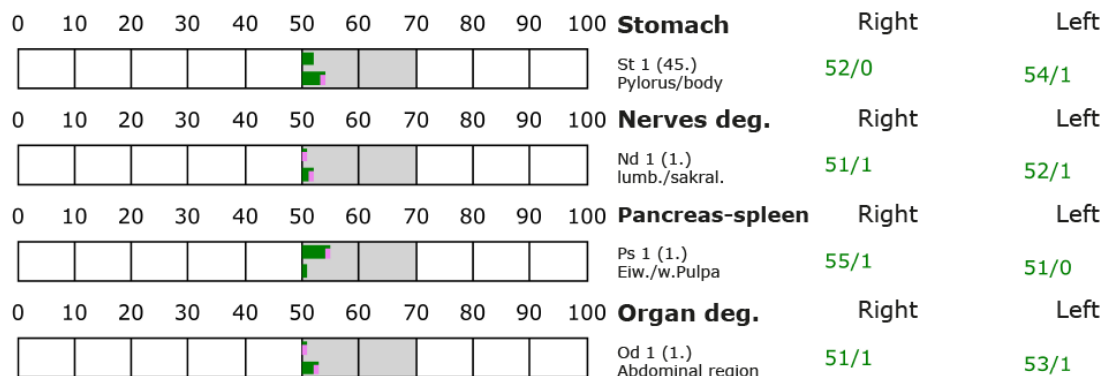
D: Degeneration (< 50 Skt.)

Standard values: (50-70 Skt.)

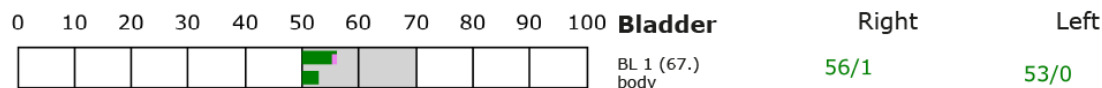
### Element: lu - sk - li - ct



### Element: st - nd - ps - od



### Element: bl - ly - ki - al





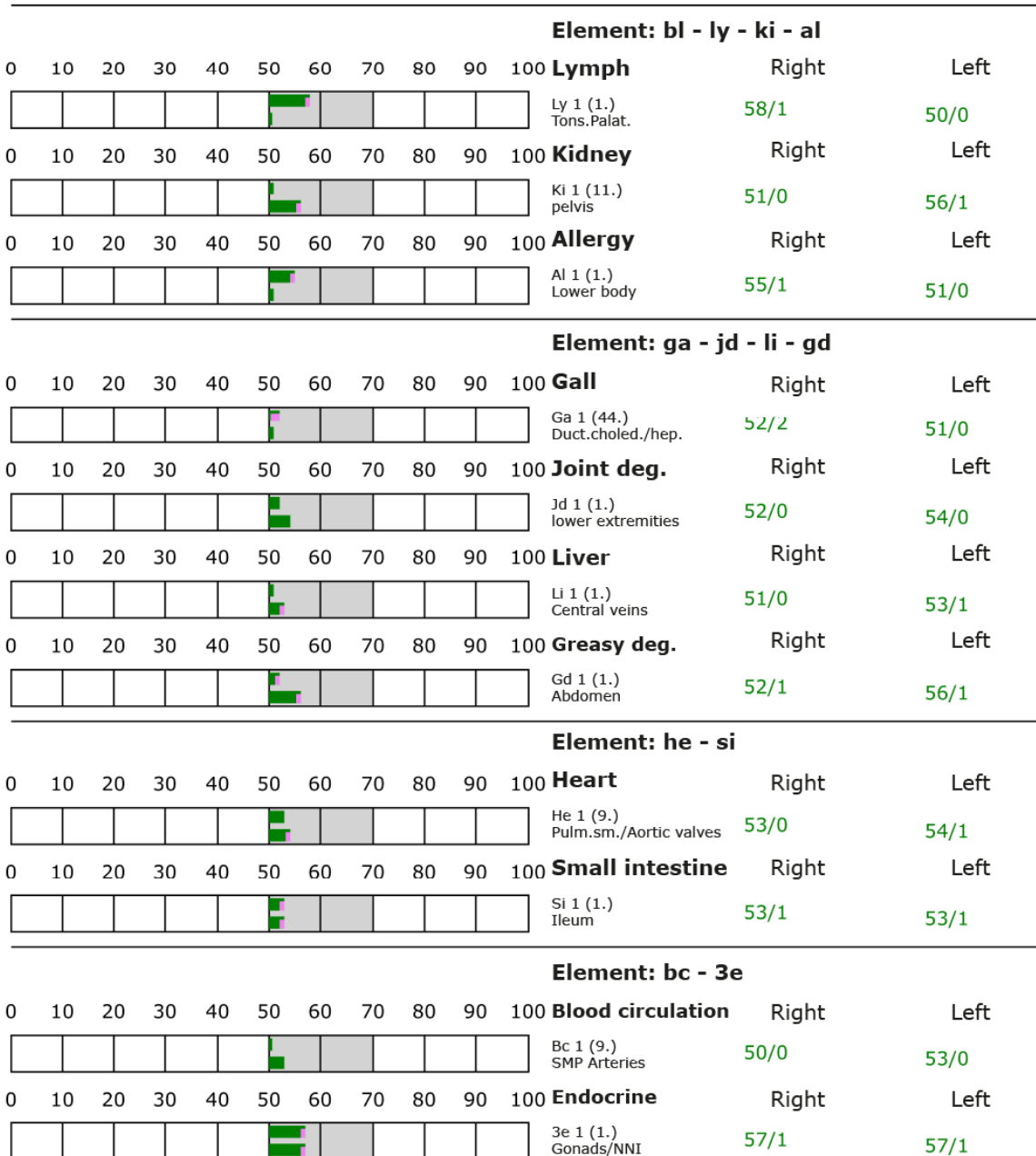
## BESA basic test

+++ : Indicator decline > 15 Skt.  
++ : Indicator decline 6-15 Skt.  
+ : Indicator decline 3-5 Skt.

T: Total inflammation (>89 Skt.)  
P: Partial inflammation (70-89 Skt.)

D: Degeneration (< 50 Skt.)

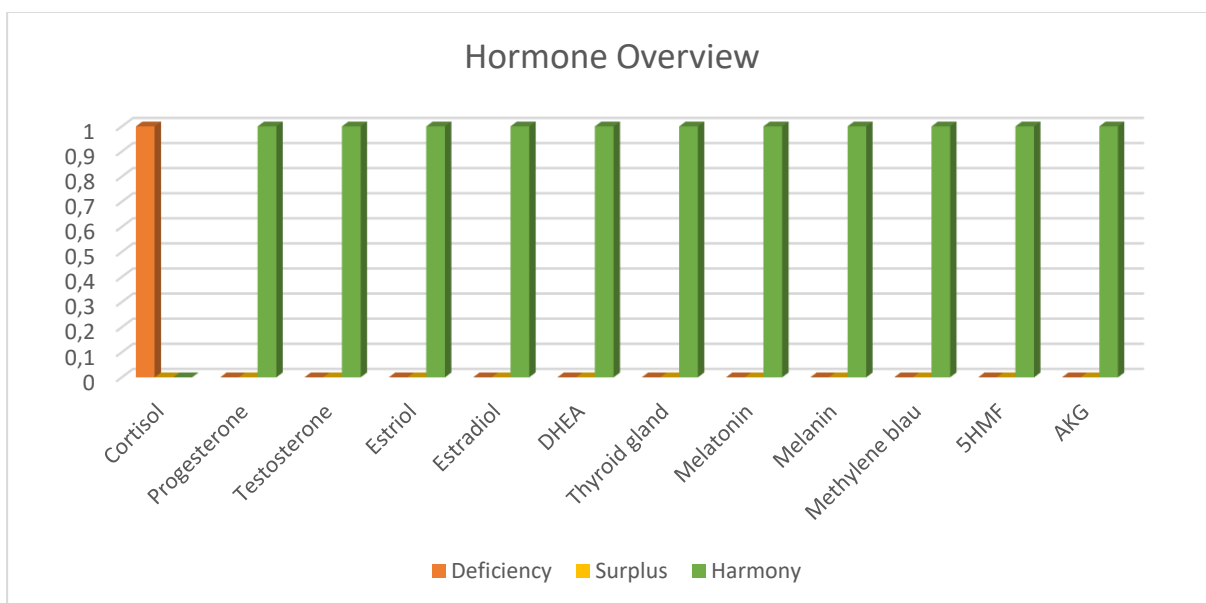
Standard values: (50-70 Skt.)





## Hormone scheme - BEFORE

	Deficiency	Surplus	Harmony
	Hypofunction	Hyperfunction	
Cortisol	+		
Progesterone			+
Testosteron			+
Estriol			+
Estradiol			+
DHEA			+
Thyroid gland			+
Melatonin			+
Melanin			+
Methylene blue			+
5-HMF			+
5-Hydroxymethylfulfural			
AKG			+
Alpha-Ketoglutarat			



### Cortisol-Level

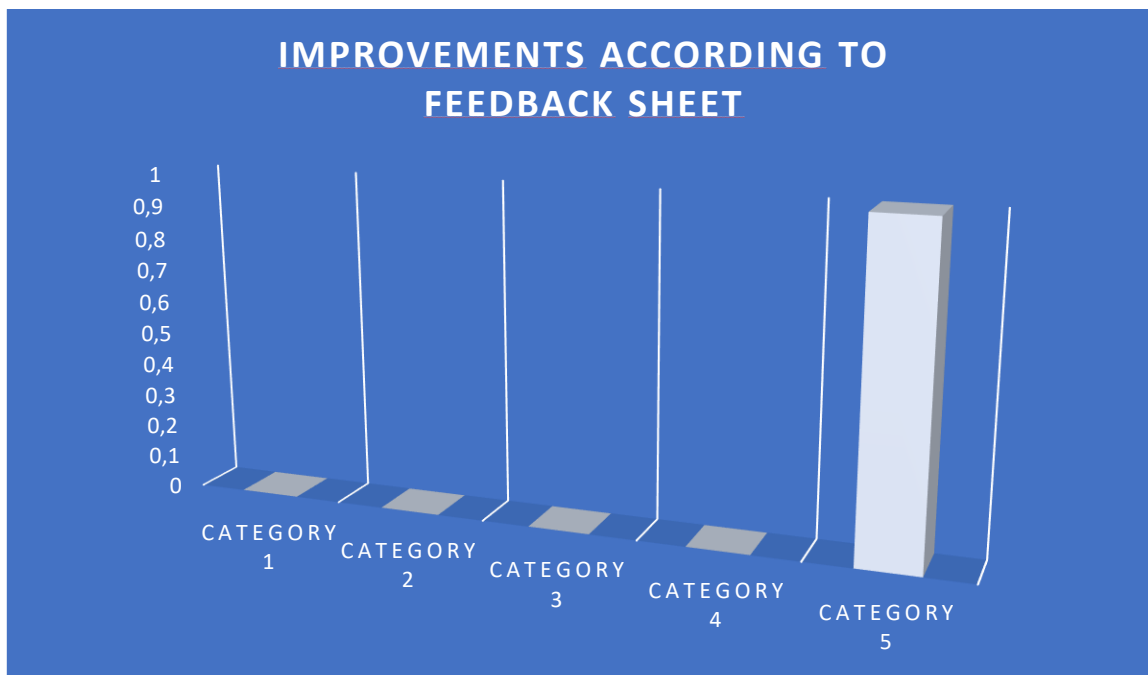
	Morning	Noon	Evening
Cortisol			
too high			
too low			
neutral	+	+	+

### Electromagnetic interference fields

	yes	no
GE 1 Silicea - strain on the EMSF		+
GE 2 Electromagnetic charging		+
GE 3 Load on radio transmitter		+



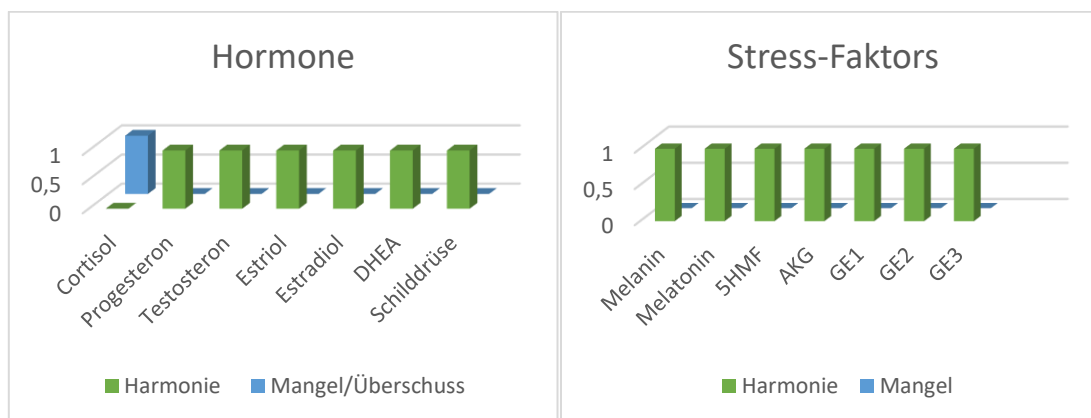
## Feedback form on the experience with the test object



Collection of essential data and research results with regard to the effectiveness of the test object specified in the project description and project design on the energy-informational and physical system of the respective dog.

The animal owner then described in detail all positive (life-enhancing) and negative (life-hindering) experiences on a scale of 0-5.

- |                           |   |
|---------------------------|---|
| <b>Category 1 (1-3)</b>   | no change - slight temporary effects  |
| <b>Category 2 (4-6)</b>   | slight changes - noticeable short phases of improvement                         |
| <b>Category 3 (7-9)</b>   | moderate improvements - longer phases of freedom from symptoms                  |
| <b>Category 4 (10-12)</b> | strong improvements - lasting freedom from symptoms                             |
| <b>Category 5 (13)</b>    | complete regulation or elimination/elimination of problems, symptoms, pathogens |



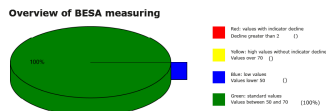


## The results of the BESA tests at a glance

Proband 25 KG

Female LB

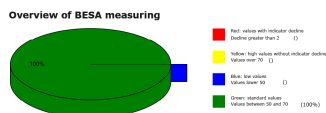
BESA testing BEFORE, no  
confrontation of the test person  
with the "Quantum Upgrade"



Proband 26 KG

Rüde BB

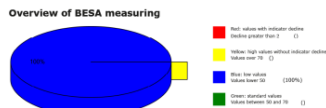
BESA testing BEFORE, no  
confrontation of the test person  
with the "Quantum Upgrade"



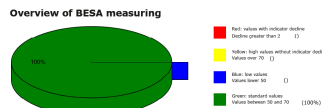
Proband 27 EG

Male-dog LI

BESA 1 Testing BASIC BEFORE as  
energy-informative status



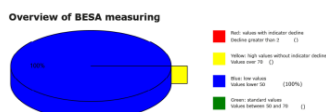
BESA 2 Testing AFTER, after  
confrontation with the „Quantum  
Upgrade“



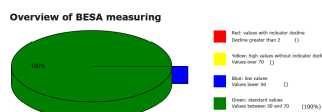
Proband 28 EG

Male-dog

BESA 1 Testing BASIC BEFORE as  
energy-informative status



BESA 2 Testing AFTER, after  
confrontation of the Proband with  
the „Quantum Upgrade“

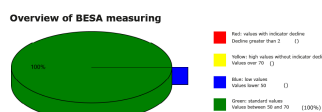


Proband 29 EG

Female AC2

No BESA 1 testing BEFORE  
see detailed project P75 4.1.3 -  
Subject P16

BESA 2 Testing AFTER, after  
confrontation of the Proband with  
the „Quantum Upgrade“

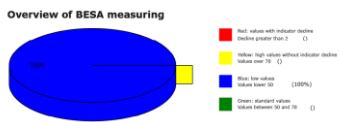


Proband 30 EG

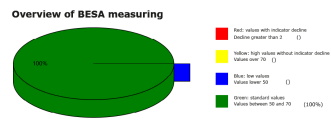
Male-dog F2



none BESA 1 Testing  
BEFOR  
see detail-Project P75 4.1.1 –  
Proband P6



BESA 2 Testing AFTER, after  
confrontation of the Proband with  
the „Quantum Upgrade“







## The result of an interdisciplinary perspective on the regulation of chronic stress in dogs

### **Effect of a quantum technology as a test object using bioenergy-informative system analysis – BESA**

As part of this animal-dog study, we investigated the effect of a quantum technology on energy-informative behaviour (in the meridian system) on the health parameters of the animals as test subjects. With the help of bioenergy-informative system analysis (BESA for short), we investigated whether life-promoting changes in the energy-informative status (BESA) of the treated dogs could be detected. In particular, the question was whether a regulation of the factors mentioned, such as energy-informative status, HPA axis (stress axis) or hormone status, can be detected within the energy-informative control circuits or biological structures. Previous studies and their results already indicated that the technology of the test object promotes the energy-informative balance of the organism, stabilises the blood environment and modulates inflammatory processes.

### **Stressors as the main influencing factors**

A remarkable aspect of previous research projects showed evidence of the interaction between emotional stress of the animal owners and the physical health of the animals. A transfer of emotional stressors ("referral") was also clearly manifested in the blood counts and physiological (cell structure) parameters (tested using BESA) of the dogs.

In addition, the inadequate digestion of meat-based diets due to stress-related digestive insufficiency led to further stress in the area of the gut-lung-skin axis.

The influence of stress on animals, regardless of whether it is unconscious stress (traumas, imprints, conflict-based attachments, etc.) or physical stress (e.g. also EMSF) plays a decisive role in relation to the so-called HPA axis (stress axis). The hormonal regulatory systems and mechanisms of cortisol, progesterone, testosterone, DHEA, melanin and melatonin, for example, were particularly important and highly relevant. In fact, there were numerous indications that animals, like humans, react to stress and environmental factors that go far beyond the obvious physical stresses (see the abstract on the HPA axis from study P79 Men's H.E.A.L 360 Underwear).

### **Direct impact of the stressors on the test subjects**

Die Hypothalamus-Hypophysen-Nebennierenrinden-Achse (HPA-Achse) ist der zentrale mechanism by which the body reacts to stress. This current project shows that chronic or unconscious stress in animals leads to an overstimulation of this axis, which in the long term increases the release of cortisol. A sustained increase in cortisol not only leads to systemic inflammation, but also weakens the immune system and impairs digestion, which can result in symptoms such as skin diseases or gastrointestinal problems in animals.

Animals, especially pets such as dogs, which are closely connected to the habitat of their owners, are exposed to the same electromagnetic pollution as humans. This includes Wi-Fi, mobile phone radiation and electrical devices, as well as mobile phone masts, smart meters, LED lighting and much more. Extensive studies (including our own previous studies) have confirmed that electromagnetic interference fields (EMSF) disrupt cell communication and



promote oxidative and nitrosative stress. In sensitive animals, this in turn leads to a lack of melanin and melatonin. This in turn often manifests itself in symptoms such as restlessness, sleep disorders or an increased susceptibility to diseases (renal insufficiency, lung, intestinal, liver stress, etc.).

### **The role of melanin and melatonin in the stress response**

In addition to its role as a pigment, melanin in particular also has bioenergy-informative properties that enable the organism to perceive its environment accordingly and that can help to absorb EMSF, among other things, and protect the body from their effects. As can be seen from the present project, a well-regulated melanin system can therefore increase tolerance to such stressors. A weakened melanin system, on the other hand, is a major cause of electrosensitivity.

Melatonin, on the other hand, is primarily produced by the pineal gland. On the one hand, it is crucial for the sleep-wake rhythm, on the other hand, it also has antioxidant and anti-inflammatory properties. Chronic stress and electromagnetic interference fields (EMSF) can impair melatonin production in the pineal gland, which in turn weakens the body's ability to regenerate.

### **This revealed another bridge to animal health**

It was plausible for us within this Study and detail-project P75 4.0 and P75 4.1 on the animal study to scrutinise the combination of stress, electromagnetic stress and hormonal deregulation as playing a central role in the observed deregulations. As the project descriptions 1-5 show, the technology of the test object in the experimental group was able to achieve a potential harmonisation of the energy-informative systems compared to the control group by supporting the homeostasis of the HPA axis and consequently the regulation of the hormone structures addressed, particularly melanin and melatonin, as well as general cell communication.

The current results confirm that the quantum technology of the test object enables sustainable physiological and energy-informative regulation in dogs on the one hand and also reduces psychosomatic stress on the other.

The aim of this study was to emphasise the importance of a holistic approach that integrates physical, emotional and energy-informative aspects in order to effectively address chronic stress in animals.

The research perspective here was generally focussed on the extent to which the quantum technology of the test object is able to provide measurable relief for these systems through targeted application.

## **General information on the test result**

Humans, like all biological objects (including animals and plants), are a kind of receiving antenna for environmental information. This is because life, especially that of humans, animals and plants, is fundamentally and exclusively dependent on environmental information. Our organism is biologically very sensitive where natural information (fields) is



located or where this natural information is subject to interactions and fluctuations. The situation is all the more dangerous when such fields of constructive structures are disturbed by various environmental stresses.

**For this reason, detected informative electromagnetic interference fields are biologically highly relevant. Any reduction or conversion of these interference fields (ideally to 100 per cent) is biologically very important, in some cases even vital.** These information burdens from our primarily artificial environment are only compatible with life if they can be re-adjusted to a natural fluctuation tolerance. Disturbances, problems, blockages and disharmonies in the biological control loop of biological objects, especially in animals, are caused by such disruptive information influences.

**Neutralising or harmonising effects were demonstrated in this project P75 4.1.5 to determine the effect of the test object, the "Quantum Upgrade" on animals. The "Quantum Upgrade" was able to neutralise the biologically detrimental effects and impacts of the stress factors tested on the animal test subjects.**

**The significant ability of the test object to neutralise and harmonise the stress factors tested in this project P75 4.1.5 is hereby demonstrated. The conversion of the tested information into bioenergy information with biological and life-promoting quality is proven with this project.**

## Authorized Summary

The BESA tests carried out by IFVBESA on the energetic and physical effectiveness of the test object have clearly shown that this test object is able to neutralise or harmonise biologically significant stress factors at the acupuncture points of the test subjects. Using bioenergy-informative system analysis, the effect of the above-mentioned stress factors on the animal test subjects, their meridian systems and their energy-informative biological control circuits was scrutinised and systemically tested at the energy-informative level. The BESA tests BEFORE - AFTER show significant changes at the tested acupuncture points on the meridian system of the test person (animals). The measurement data and their key figures impressively confirm, on the one hand, the stresses caused by the tested factors on the human organism and, on the other hand, illustrate how the deregulating energies are transformed into biocompatible energies inherent in the body after the test object has been applied.

From a holistic perspective, it can be assumed that the positive effect on the test subjects - animals - also occurs in other animals. The BESA BEFORE-AFTER comparison with 30 different dogs (test subjects) clearly shows that the positive influence of the test object is actually possible with high precision. All measured values improved significantly from the mostly 100 per cent blue measuring range to the green, mostly 50 sct range (sct = scale value), i.e. the range of optimal measured values. This means that

Optimal regulation dynamics have taken place. According to the IFVBESA, we can clearly speak here of an optimal, significant improvement in the body's own energy situation.



## Result

In the BESA AFTER test, the test subjects - animals were each brought into contact with the test object. In contrast to the BESA BEFORE tests, in which the test object was not used, consistently positive measurement results were recorded, indicating that neutralisation or harmonisation had taken place. The regulatory dynamics developed into an optimal effective.

By demonstrating the energy-informative effectiveness of the "Quantum Upgrade" as a test object to the test subjects - dogs (P25-P30) in this project P75 4.1.5, the requirements for obtaining a BESA seal of approval from the International Association for BESA were fulfilled.