



IFVBESA

Information is crucial

P75 4.0.1 BESA-Detail-Project

Dark field microscopy - life blood analysis
for various dogs in the

Quantum Upgrade



Project P75 4.0 on BESA reports

Dark field microscopy - life blood analysis
as part of a BESA seal of approval
on the effectiveness of the product
“Quantum Upgrade”
on various dogs as test subjects
also referred to as “test object” in the project



Client:

company: Leela Quantum Tech, LLC
Attn: Eleonora Goldenberg
1421 LUISA STREET, STE G
SANTA FEE, NM 87505
USA

Project participants:

Project management: Wolfgang Hans Albrecht, President and Scientific Director of IFVBESA and
Mag. med. vet. Barbara Hollogschwandtner

Tester: Eva Schmidt, Vice President and Deputy Scientific Director of the IFVBESA

Test subject (proband): 30 (16/14) pets as test subjects with correspondingly different age and health status in a randomised double-blind study.

Test subjects:

P75 4.1.1: 6 test subjects from P1 to P6
P75 4.1.2: 6 test subjects from P7 to P12
P75 4.1.3: 6 test subjects from P13 to P18
P75 4.1.4: 6 test subjects from P19 to P24
P75 4.1.5: 6 subjects from P25 to P28

Project location:

Location 1:

International Professional Association for BESA (IFVBESA)
Hauptstraße 1-2
A-4861 Kammer/Schörfling am Attersee

Location 2:

Holistic veterinary practice Purkersdorf
Mag. Med. Vet. Barbara Hollogschwandtner, veterinary surgeon
Linzerstraße 63, A-3002 Purkersdorf

Date: from 05.03.2024 until 07.02.2025

Project duration: 325 days



Inhalt

Basics of research project creation P75 4.0	5
Project - Design	7
Test subjects.....	8
Abstract on an interdisciplinary perspective	9
Research funding services of the IFVBESA - BESA reference tests	10
Research project description and questions.....	10
Legend for interpreting the characteristics of the blood analysis	12
The result of an interdisciplinary perspective on the regulation of chronic stress in dogs.....	41
General information on the test result	42
Authorized Summary.....	44

Important notes

The client has the right to utilize this expert opinion/project. Irrespective of this, this report/project is the intellectual property of IFVBESA as the contractor. The contractor is authorized to use this expert opinion/project for other purposes, provided that this does not violate the client's data protection and confidentiality obligations. Apart from this, this project/expert opinion, with the exception of the "Authorized Summary", may not be changed or abridged and passed on without the consent of IFVBESA. The order for this report/project relates to physical and energy-informative measurable values, the interpretation of which is based on the guidelines of BESA or IFVBESA. Maintaining the quality/effectiveness of the tested technologies/processes/products and their regular monitoring is the task and responsibility of the client. For this reason, the technologies/processes/products are subjected to regular efficacy tests by the IFVBESA in order to confirm their functionality in the respective certificates with a validity period. The examination of the manufacture, the mechanism of action or interpretations of the client's products vis-à-vis third parties are not the responsibility or task of the contractor. Video recordings may only be made with the authorization of IFVBESA.



Basics of research project creation P75 4.0

The International Federation for Bioenergetic Systems Analysis - IFVBESA was commissioned by the company Leela Quantum Tech LLC to test and prove the effect of the test object 'quantum upgrade' on dogs using DF microscopy (live blood or vital blood analysis). The test was carried out independently of the subjective perception of the test person.

Description of the test object, "Quantum Upgrade" by the client:

Firstly, it is important to understand that two independent objects can be energetically connected to each other. This connection or "association" is known as quantum entanglement. As soon as these two objects are entangled with each other, a change in one object or entity also causes a change in the other or the other - even if they are not in close proximity to each other.

This is why, for example, a mother can "feel" when something happens to her child, even if she is thousands of kilometres away. She is connected to her child (in quantum terms, they are said to be entangled with each other). In this way, scientists can also take a skin cell or blood sample from an astronaut on Earth, send it into space and detect any changes in the cells or samples that remain on Earth.

„Quantum Upgrade" utilises the same proven principle

Through years of research and the development of the Quantum Upgrade product, the company "Leela Quantum Tech, LLC" has created one of the world's most powerful sources of usable quantum energy. With the Quantum Upgrade, any biological object can be connected to this quantum source (energy source).

Immediately after activation, there is an immediate quantum entanglement and quantum energy is channelled to the locations previously defined within the scope of the respective requirements. Healers, emphatic people or those who are particularly sensitive to fields such as electromagnetic fields (EMF) or electromagnetic radiation will probably notice the difference immediately. Others may need a little more time or may not "feel" anything at first - until the first changes in their lives become apparent.

How quantum energy supports change

In physics, there is the so-called principle of inertia, which states that

"A body at rest remains at rest or maintains its state of motion as long as no force acts on it or the sum of the forces cancels out. A body in motion also continues to move at a constant speed as long as no external forces act on it".

This so-called first Newton's law can therefore be applied just as well to all biological objects as to humans: It is easier to keep something the same than to change it, as change requires more energy.

But what happens if you don't have enough energy to change? You get stuck. And that is precisely the point at which the majority of humanity finds itself. They are stuck in old ways of thinking, acting and living. This is one of the reasons why meditation, prayer and other spiritual practices can lead to powerful changes. They connect us with the "source" or, in other words, back to our source (origin, the absolute) via quantum energy.



And thanks to this additional energy (quantum energy), the "quantum upgrade" can bring about a change that would have been impossible before.

The Quantum Upgrade as a tool

A "Quantum Upgrade" is a technology, one could also consider it a tool, that creates a concentrated quantum energy space.

This is able to balance energies, increase performance and build up protection against e.g. harmful electrosmog radiation (EMSF). Quantum Upgrade is the most innovative development in the field of natural health, combining science and quantum energy healing in an easy-to-use and easy-to-understand subscription service.

Quantum energy harmonises body, mind, spirit and consciousness (body as the embodiment of consciousness). It expands consciousness and activates the flow of pure life energy through the body!

However, juggling the demands of modern life can be tiring and stressful and can leave people feeling overwhelmed. Subconscious fears and ingrained opinions often make us forget that we all have infinite potential and are beings without limits.

And this is exactly where the Quantum Upgrade helps us to return to our natural ego state and expand our consciousness in the long term

In this way, a healthy, fulfilling and meaningful life can be experienced.

Polarity

There is no polarity in the Quantum Upgrade. Magnets add pressure, instability and a certain type of alignment to a quantum field, so the energy of a magnet-supported quantum field is a "trapped" and almost locked-in energy force that cannot flow freely and is constantly battling with the magnetic field. From an energetic point of view, the field must constantly recharge itself. The instability, disharmony and energetic pressure can be felt and "seen" in such devices, and they affect everything in their vicinity.

With the Quantum Upgrade, a groundbreaking new quantum energy generator has been created that provides not just a one-dimensional quantum field, but a truly multi-dimensional quantum space and is also very powerful. It is also not bound in any way to the Earth's magnetic fields and can therefore be considered (and energetically looks like) a quantum sun, as it radiates and emits freely in all directions without an Earth-bound flux. The "Quantum Upgrade" is dynamic, harmonic, always stable and retains these properties when the quantum energy concentration and the levels of consciousness/perspective are increased. Although the use of a Quantum Upgrade comes with a certain responsibility, one should know that the energy is always balanced and harmonious.

To the Quantum Upgrade as a test object:

Animals also benefit from the "Quantum Upgrade"

Not only humans benefit from the positive effects of quantum energy. Animals can also sense the energy and utilise it very well for themselves, provided it is tailored to their needs.

These indications are intended as an interpretation of the scope of the effect of the test object and an indication of its holistic orientation. The effect of the "Quantum Upgrade" can thus be easily achieved for the animals.



The concept of this test object is therefore to harmonise and neutralise disturbances, problems, blockages and disharmonies in the animals' environment and thus replace negative states with positive states. Due to its mode of operation, the test object has a simple and yet very effective area of application for the animals.

The animals/subjects are primarily selected by the project partner Barbara Hollogschwandtner, MD. A detailed description of the animals can be found in the project description.

Project - Design

This project is an explorative study in which the harmonising effect of the test object on 28 test subjects (dogs) is investigated. This project is double-blind, randomised and carried out in relation to the test object using quantum entanglement. In this scientific experiment, there are at least 14 test subjects in an experimental group (treatment group) and 14 test subjects in a control group (placebo). In addition, 2 test subjects are shown (P6 and P16), who were confronted with the test object for 4 weeks after the end of their participation in the project (control group). For results see P6-TO and P16-TO

The results with regard to the effect of the test object are even more significant than those of a pure double-blind study because the design of this project includes modern, quantum-physical elements. It thus creates new paths and standards in the field of research into clinical quantum technologies and their modes of action.

The explorative research approach of the IFVBESA

New knowledge, new insights and new ideas are the breeding ground in which science and the technologies of the future thrive. The explorative approach of most of our research projects is the seed for the information medicine or quantum technology of tomorrow. In exploratory study design, we present a methodological research approach in which research areas or research questions are investigated that have not yet been investigated. This demonstrates both the development and the potential of novel approaches for research into future technologies.

The concrete and feasible application reference of the international professional association for BESA reduces the otherwise high research risk that often prevents companies and research institutes from dealing with topics at a very early stage of development.

Double-blind and randomised

This project is conducted in a double-blind, randomised and quantum-entangled manner. Double-blind means that neither the subject nor the tester knows who will be confronted with the test object and who with the placebo. This is only possible through random group allocation (randomisation). The aim of blinding is to analyse the results as objectively as possible.

Randomised means that a procedure is used in this project in which the test subjects are randomly assigned to the control group or the experimental group.

Quantum entanglement:



Quantum entanglement is not a physical connection between particles, but a synchronisation of information and energy in the field of consciousness. Everything is already connected - not through space and time, but through coherent resonance within a universal information network. Matter is therefore merely a condensed manifestation of this interaction of consciousness.

This means for the current test object: Each test subject (in this case the dogs) receives an energy-informative signature via virtually defined coordinates. This signature forms an energy-informative imprint in the quantum field and exists as a constant reality at every moment of movement.

It stores the frequency and essence of what is mapped via the coordinates and remains stable in the universal information network as a real extract of the space of consciousness. This creates an energetic bridge - a connection between the original moment and the current space of consciousness that remembers and works independently of space and time.

About photography: A photograph is therefore an energetic-informative imprint from the quantum field. This means that a photograph is a visual reminder on the one hand and establishes an energy-informative connection to the current or original moment on the other. The photographs were tested and analysed in the IFVBESA laboratory using a BESA surrogate. This means that all subsequent BESA tests in the project, which are recorded using photographs, are subsequently carried out under the IFVBESA laboratory conditions mentioned above.

What does surrogate mean: This is a substitute person who stands in for the respective test person live in the case of a quantum entangled BESA test or application of the test object.

Placebo (empty object): In this case, unlike the test object, the placebo is an empty object that does not contain any effective frequencies. The test object cannot be distinguished from the empty object (placebo) either for the test subjects or for the test persons.

Test subjects

In addition to the test object already described, at least 28 test subjects form the framework for this research project. In parallel, additional test subjects will be integrated as substitutes for possible unexpected dropouts.

The test subjects as animals (dogs) will be informed in advance of this project via the dog owners about the general procedures for this project and their function as representatives (see corresponding documents).

General means that neither the subjects nor the test persons know what the background of the series of measurements is. The aim of this type of blinding is to obtain as objective an evaluation of the results as possible in order to exclude so-called placebo effects.

The test subjects are anonymously assigned a number from P1 to P28. The test subjects are also anonymously assigned to either the control group or the experimental group.

The different appointments made with the test subjects for the BESA tests may result in the test subjects' numbers from P1 to P28 appearing differently in both the experimental group and the control group. For this reason, in the statistical analysis, the numbers of subjects P1



to P30 are additionally numbered from 1 to 28 (see list of the experimental group and the control group)

For those test subjects who did not have the opportunity to take part in the BESA tests live during the scheduled period, photos were taken for the quantum entangled BESA tests. The photos were printed on high-quality photo paper, which is necessary for this form of BESA testing. These test subjects are also included in the statistics with quantum entanglement (QV).

The BESA tests are carried out as follows for each test subject:

1. at the beginning of the project to create a so-called status (actual situation).
2. in the 2nd part of the project after at least 4 weeks of exposure to the test object or the blank object (placebo).

Abstract on an interdisciplinary perspective

General

Chronic diseases such as atopic dermatitis, gastrointestinal dysbiosis, respiratory problems, epilepsy and cancer are increasing alarmingly in dogs. Our own initial research results show that these problems are caused on the one hand by environmental factors such as environmental toxins, electromagnetic interference fields (EMSF) and inadequate nutrition, and on the other hand by psychosomatic stresses that dogs often pick up from their owners' emotional environment (e.g. grief or guilt).

Questions that flow into this current study

In this current study, we are investigating the effect of an innovative test object on the general health parameters of dogs. The bioenergy-informative system analysis (BESA) is used to detect possible changes in the energy-informative status and in the vital blood of the animals. Initial results indicate that quantum technology at least stabilises the status of the energy-informative system, opens blocked control loops, modulates inflammatory processes and promotes a sustainable balance in the organism. The initial results of BESA tests show a clear regulation of the energy-informative parameters towards a regulative behaviour. Particularly noteworthy is the observed interaction between the emotional stress of the animal owners and the health of the animals. In many cases, stress-related digestive insufficiencies were found, which led to further stress.

Stress axis

A central aspect is the role of the HPA axis (hypothalamic-pituitary-adrenal axis) in connection with chronic stress. Overstimulation of this axis by physical and emotional stressors impairs hormonal regulatory systems (e.g. cortisol, melanin, melatonin, etc.) and leads to systemic inflammation, immunodeficiency and impaired digestion. Electromagnetic interference fields intensify these stresses as they disrupt cell communication and generate and promote oxidative and nitrosative stress.

Melanin and melatonin play a key role here: melanin not only acts as a pigment, but also as a bioenergy-informative protective system against EMSF, while melatonin has antioxidant and



anti-inflammatory properties. However, stress and EMSF impair their function, which weakens the body's ability to regenerate.

Summarised

The initial results suggest that the technology of the test object can bring about energy-informative harmonisation, support the homeostasis of the HPA axis and promote the regulation of melanin, melatonin and cell communication.

The planned study aims to further investigate these potential effects and shed light on their significance for holistic animal health.

Research funding services of the IFVBESA - BESA reference tests

Project P75 4.0.1 is specifically concerned with proving the effectiveness of the test object's technology on test subjects 1-6 as dogs.

The test object is tested in accordance with the client's wishes within the framework of the applicable IFVBESA conditions for awarding quality seals. In principle, seals of approval are awarded in three categories depending on the significance of the test results, taking into account all tests of a project. The purpose of the test object is to determine whether its application can harmonise and neutralise the above-mentioned stresses from the typical environmental influences and, as a result, harmonise or neutralise existing disturbances, problems, blockages and disharmonies in the energy system of the test subjects (biological system of the animals) and thus replace negative pathological conditions with positive conditions. This will be scrutinised in the following tests commissioned for this project.

Research project description and questions

The purpose of the test is to prove the functionality of the „test object“ by means of test results obtained by subjecting the vital blood of the test subjects to a vital blood examination in BEFORE microscopies in order to connect it with the ‘test object’ (experimental group) and without the test object (control group) in the AFTER microscopies and to microscope and examine it.

In the course of this project, the photographs and videos of all test subjects will be viewed and scrutinised with a view to the morphology of the blood and the blood environment. The focus here is therefore on the functionality and mode of action of the ‘test object’ in relation to the vital blood or environment of the test subjects.

- The BEFORE microscopies (experimental group) are carried out without the ‘test object’.
- The AFTER microscopies are carried out with the test object (experimental group) and without the „test object“ (control group).

The question for each AFTER microscopy was: „Is the “test object” suitable and able to harmonise or neutralise the perceived stressful effects on the organism of the animals from the BEFORE microscopies“?



The appropriately designed tests should provide information on this by comparing the BEFORE microscopies without the „test object“ with the test results of the AFTER microscopies to be carried out using the „test object“.

General research questions:

1. can the technology of the test object influence the effects of the addressed stress factors at the level of the HPA axis or the addressed hormonal markers such as melanin and melatonin in the dogs in a positive-constructive and life-promoting way?
2. is a measurable relief of chronic stress possible through targeted application of the technology of the test object?

Detailed questions:

Question 1: Can possible pathogen-morphological developments improve under the influence of the ‘test object’ (test subjects of the experimental group) in the AFTER microscopies?

Question 2: Is the effect of the quantum field from the ‘test object’ via the process of quantum entanglement able to harmonise or improve a blood situation that may be detrimental to the health of the dogs (test subjects)?

Question 3: What altered behaviour can be observed in the immune system, especially in the red and white blood cells (e.g. erythrocytes, leukocytes, monocytes, lymphocytes, thrombocytes, etc.)?

Question 4: In what way can the environment be adapted by the influence of the test object?

Question 5: Is it the environment that undergoes regeneration through the influence of the test object and thus influences its individual blood components?

Question 6: What conclusions can be drawn from the application and the already proven effect of the ‘test object’ on the situation of the animal stress factors?

The client's concern is to determine whether the ‘test object’, as noted in the product description, is suitable for harmonising the disturbances, problems, blockages and disharmonies in the meridian system of the test person (biological object-animals) resulting from the BEFORE microscopies (without test object).

General information on the information transfer of the test object

Information is transferred from the hyperspace of the test object to the hyperspace of biological objects (humans, animals, plants). From there, the information reaches the reference space or energy space via so-called interaction channels. This is an amalgamation of all organs and forms of energy in the biological object. This is where the information from the programme can be dynamically realised and thus change current states. The changes can manifest themselves in the form of neutralisation or harmonisation of disturbances, the resolution of problems, blockages and disharmony.

Conditions:



The corresponding BESA tests are carried out in the IFVBESA premises under laboratory conditions, at room temperature 20°Celsius, on natural wood flooring. As a matter of principle, the test subjects are desweathed (made fit for testing) before the microscopies or the test subjects are questioned about the possibility of testing.

The corresponding DF microscopies are carried out under laboratory conditions at room temperature of 20°Celsius.

Legend for interpreting the characteristics of the blood analysis

The most important real phenomena in relation to parasites and their significance

Red blood count and milieu

Agglutination of the erythrocytes (AE):

non-specific agglutination (cell accumulation) of the erythrocytes (red blood cells), low values are an expression of vital blood

Chondrite - micro-chondrites (MiCH):

Last stage of the low-valent apathogenic endobiont forms. Can form entire networks or meshes of fibrin - restriction of flow velocity (viscosity), congestion, microcirculatory disorders

Chondrite - macro-chondrites (MaCH):

Signs of high pathogenicity, from endobiontically damaged erythrocytes, can also detach - free in blood plasma.

Overfilling of the plasma space with endobionts (ÜE):

Shrinkage of erythrocytes, increased formation of cogwheel cells and ghosts.

Anisocytosis (AZYT):

Differences in size between erythrocytes due to pathogenic effects, -> Consumption processes with erythrocyte reduction in size

Cogwheel cells with symprotite filling:

In the advanced endobiosis stage (pathogenic), snake-like outgrowths form

Cogwheel cells with vacuoles:

In the advanced endobiosis stage (pathogenic), vacuoles form inside the cells. Cells.

Bear paw erythrocytes (BTE):

Predominantly in renal insufficiency or overload, haemolytic anaemia

Blood flow properties (FEB):

The higher the blood flow properties, the more efficient the quality of oxygen supply to the target areas with oxygen.

Deformation of the cell membrane (DZM):



Disturbances in the regular shape of the erythrocytes (blood-cell membrane disorders) or Irregularities in the membrane shapes of the red blood cells. The more regular, the more pronounced the vitality of the blood.

Filitisation (FB):

Filament networks in the blood, restriction of the microcirculation and flow properties of the blood, => arterial and venous congestion, circulatory disorders, forms of hypertension, and much more. Filit formation is a sign of oxidative stress. The lower or harmonious filit formation, the higher the stress tolerance. Adequate filit formation is an expression of harmonious cell metabolism

Filit-nest-filit-symplasts (FN-S):

Strong accumulation of filament networks in the blood to form nests or further to form regular symplasts when combined with endobiotic material.

Haemolysis (H):

Disintegration or dissolution of the erythrocytes (red blood cells)

Mychite or ascite (A):

Spherical primordial germ cell of all bacteria, with wall-bound nucleus = mychite. They can also form groups (many small mychites). Original form of bacterial formation of cocci or rod bacteria. Can be found in the environment as well as within erythrocytes, e.g. *Leptotrichia buccalis* extracellular and intracellular.

Ascitic chains (AK):

Chain-like accumulation either free or growing from erythrocytes or leucocytes highly pathogenic.

Dendroid vacuoles, erythrocytes with vacuoles (EV):

Vacuoles are formed by decay and consumption processes of erythrocytes by the endobiont. These are highly pathogenic conditions.

Thecite (TH):

Original form of all bacteria in a primordial spherical shape with more or less mobile primordial nuclei in groups or individually - more or less pathogenic depending on the stage

Thecites in erythrocytes (THE):

Highly pathogenic stage

Symplasts (S):

Form a cyclogenic stage. By shifting the blood pH => alkaline orientation. Their pathogenicity can only be differentiated according to cyclode affiliation, form and species.

E.g. *Mucor* symplasts, *Aspergillus* symplasts, mixed symplasts etc.

Mucor symplasts (MS):

Aspergillus symplasts (AS):



Sclero-symplasts (SS):

Sclerotic or crystalline forms of symplasts, dry-protein forms - due to dehydration, proliferating and manifold formations of a vesicular, disc-shaped to sheet-like nature

Parasitic burdens (PB):

E.g. *Leptotrichia buccalis* intra- or extracellular, (LB). It should be noted here that the topic of parasites is more far-reaching than those mentioned here. According to Prof Dr Enderlein, parasites develop in an environment that is, roughly speaking, altered or contaminated. The respective environment enables the protite to develop higher or regress according to the bacterial cyclogeny. Parasites can therefore be both apathogenic and pathogenic

Aspergillus Butterfly - Pteroharps (AB):

High valences of *Aspergillus niger* von Tieghem, sign of a very high endobiontic state.

Sporoid symprotites - sclero-symprotites (SS):

Strongly luminous in several colours, depending on organ assignment, -> sclerotic forms of the endobiont, -> pathogenic.

White blood count

Thrombocyte symplast (TZS):

Concentrated platelets mixed with calcium and cholesterol, -> thromboses and atherosclerosis Endobiontic infestation of the white blood cells (EBWBK):

Chain-like accumulation of ascites either free or growing from leucocytes highly pathogenic.

Endobiontic destruction of leukocytes (ZL):

Dissolution of leukocytes by endobiontic infestation, highly pathogenic

Traces - spike protein (SP):

Typical haemolytic processes (disintegration or dissolution of erythrocytes and leukocytes) at all stages of cyclogenesis.

Conclusion and drying forms in the blood

Chondrite processes from erythrocytes (CHF1):

Chondrite projections from white blood cells (CHF2):

Signs of high pathogenicity, from endobiontically damaged erythrocytes, can also detach - free in blood plasma.

Intestinal pattern (DM):

Drying forms that are similar to an intestine -> note stresses in the intestine in general.

Dispanites - fish spine (DFWS):

Dry protein sheaths arranged one behind the other, chronic condition which can be assigned to *Mucor* as well as *Aspergillus* *Cyclode*.

Systagonia, scleroforms and pseudo-crystals (PK):

Nationalisation to higher organisms, complicated living - partly fantastic natural formations. In severe chronic conditions in viral, bacterial or mycotic stages.



Bryosclerite - star splash (BS):

Sclerotics as dry protein symplasts - enchanting blood morphological dryings like star splashes.

Test procedure

Microscopy 1 BASIC BEFORE as status

In the first step, microscopy is performed as status on the vital blood of the test subjects (dogs).

Microscopy 2 AFTER with the 'test object' (experimental group) or without the 'test object' (control group)

In the second step (about 4 weeks later), microscopy is again carried out on the test subjects (dogs), regardless of whether the test subject is in the experimental group or the control group

Now the question is: How does the vital blood of the test subjects react within the effective range of the 'test object' (experimental group) or without the test object (control group - placebo)?

Results of the observation of study P75 4.0 Experimental group and control group

In the following, test subjects from the experimental group are presented and interpreted for photographic and video documentation of the changes observed during the microscopic examination of the blood. The following illustrations show the expression of the morphology of the blood representatively and summarised for all test subjects in a BEFORE and AFTER illustration with its peripheral blood changes.

For descriptions of the microscopy of the following test subjects, see also the project description for study P75 4.1.



Subject 1 TBH

Experimental group BEFORE

Male-dog: TO, mixed bred
Date of birth: 1/11/2010, 14 years old
Body weight: 18kg

Health status:

- Gastritis and itching
- anxiety towards strangers
- seems lacking in energy and always a little tired

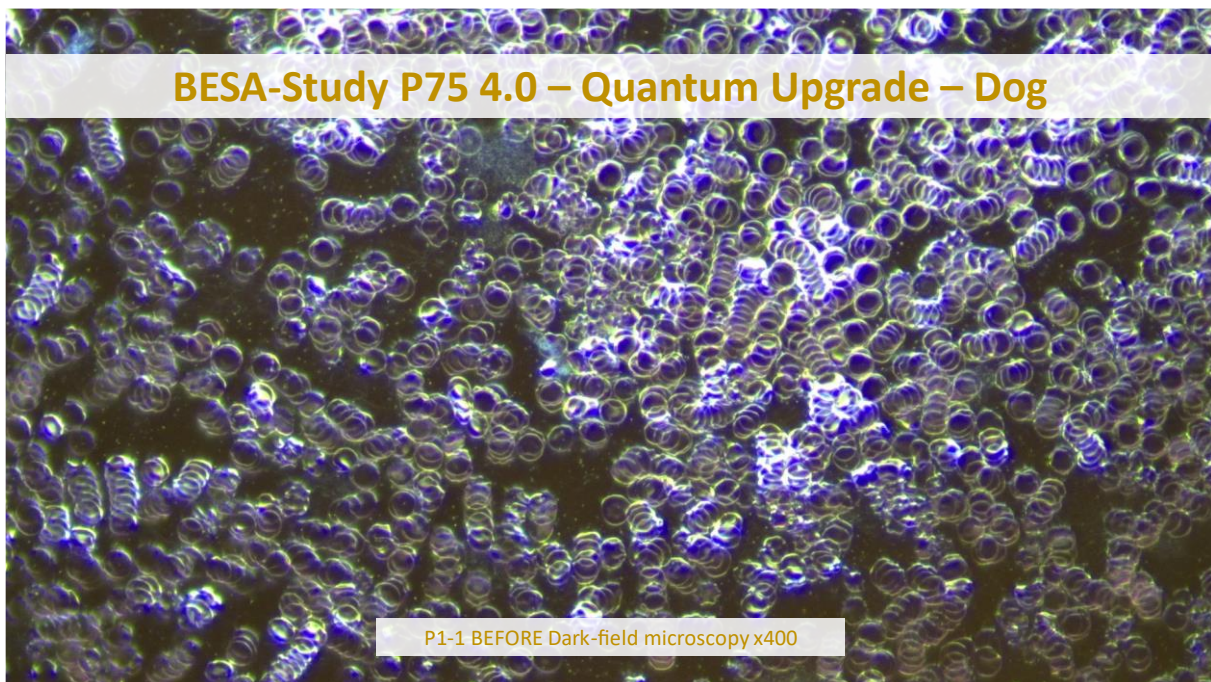
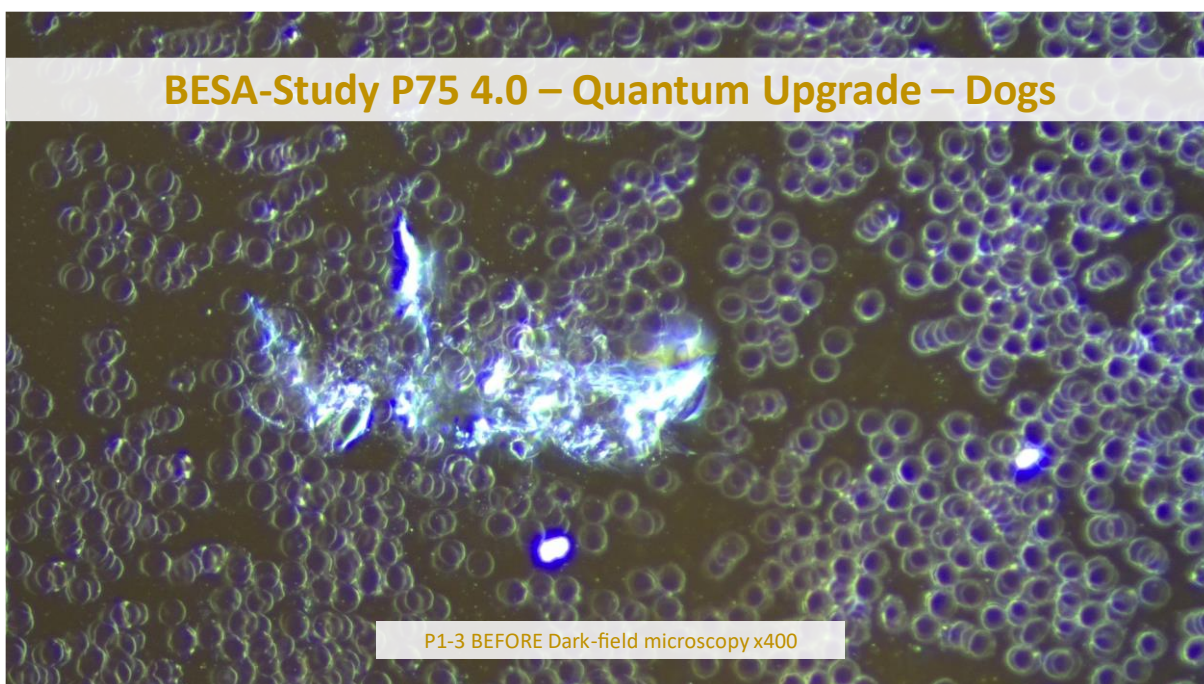
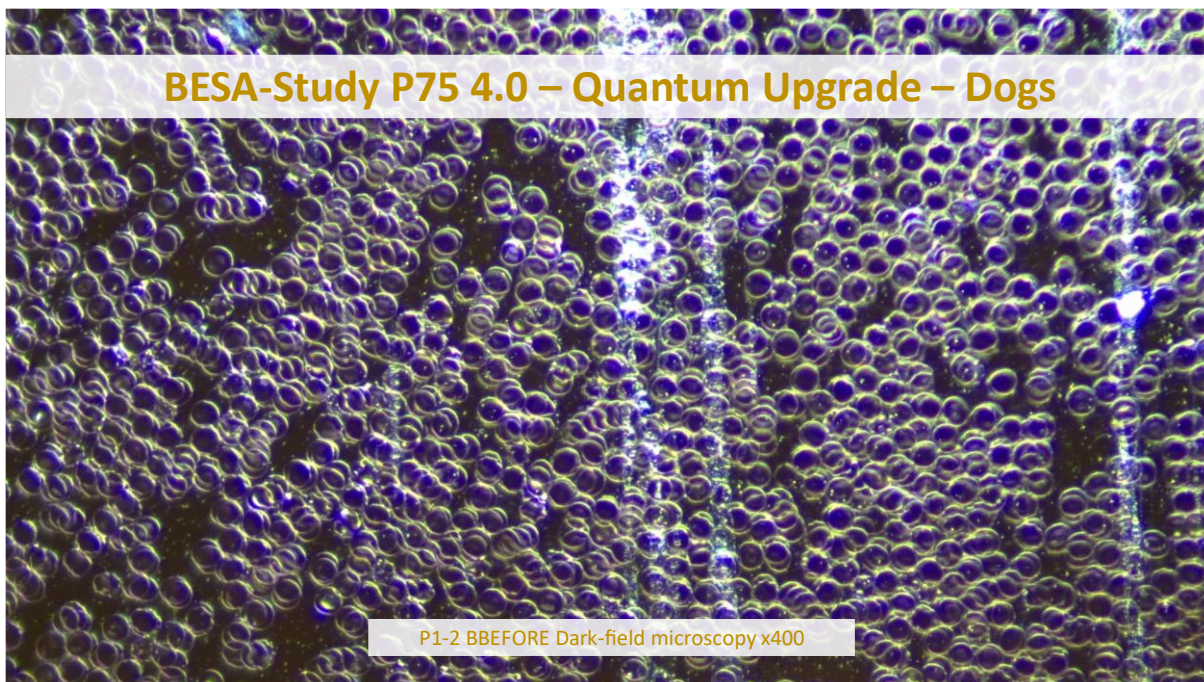


FIGURE 1 ABOVE shows an extract of the subject's blood condition after microscopy. The microscopy takes place immediately after the blood sample has been taken.

The picture clearly shows money rolls, which indicate hyperacidity, over-rejection and/or water deficiency. The latter is underpinned by the so-called paired cells (kidney load). The illustration fits well with the symptoms of itching.

Money rolls are also a sign of metabolic disorders caused by electromagnetic interference fields (see also sub-study P75 4.1 or detailed project P75 4.1.1 - P2).

Furthermore, vacuoles are occasionally found within the erythrocytes. They are caused by decay and consumption processes of erythrocytes. They are always a sign of highly pathogenic conditions



In FIGURE 2 BELOW, the extract of the subject's blood condition shows an increased number of paired cells and sporoid symprotites (dry protein that has accumulated at the bottom of the slide). They either represent residues from the corresponding metabolic processes of the organs (white colour => intestine) or result from over-rejection by protein sources.

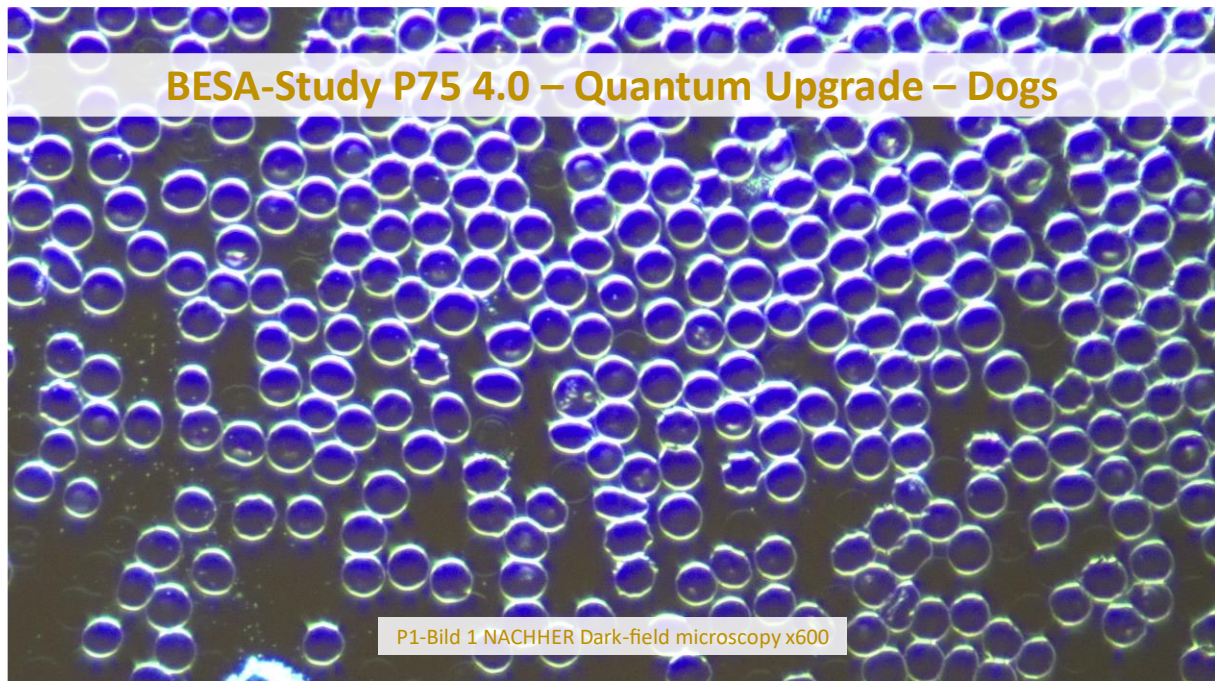
The following FIGURE 3 BELOW shows protein slags - aspergillus and mucoid - in the extract of the subject's blood condition after microscopy. Both are conglomerates of excretable substances and highly pathogenic in the sense of endobiosis.



Subject 1 TBH Experiment group AFTER

The following FIGURES 1-3 BELOW show an extract of the blood condition of the test person after the microscopy and AFTER the confrontation of the test person with the test object. The AFTER microscopies were taken almost 4 weeks after the subject was confronted with the test object.

The images were again taken a few minutes after the blood sample was taken.



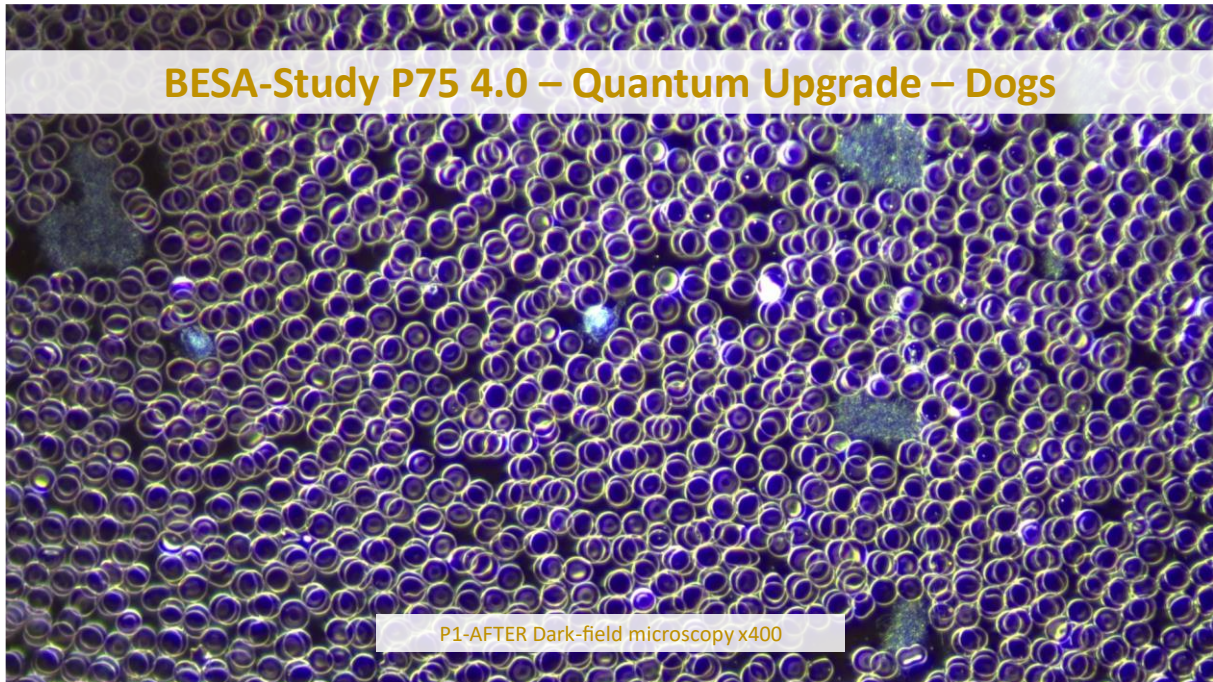


All 3 images show that the stressful, sometimes highly pathogenic factors from the BEFORE microscopies have largely harmonised (transformed or converted).

The erythrocytes show a marvellous shape and characteristics. At the same time of comparison as the microscopy BEFORE, only isolated paired cells (kidney) and some platelet symplasts can be recognised.

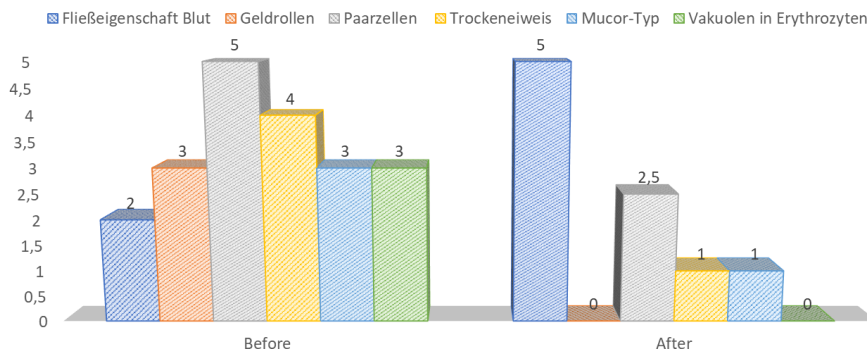
The white blood cells are also regular and dynamic.

The paired cells could again be related to hyperproteinisation.



State of health AFTER: currently no gastritis, withdrawn yes, shy towards people - much less, Digestion and pancreas much better, complexion improved, otherwise seems more lively again.

BEFORE-AFTER OVERVIEW



	Before	After
Fließeigenschaft Blut	2	5
Geldrollen	3	0
Paarzellen	5	2,5
Trockeneiweis	4	1
Mucor-Typ	3	1
Vakuolen in Erythrozyten	3	0



Subject 2 BB

Experimental group BEFORE

Male-dog: BB, Mongrel
Dat of birth: 25/08/2011
Body weight: 25,7kg

Health status:

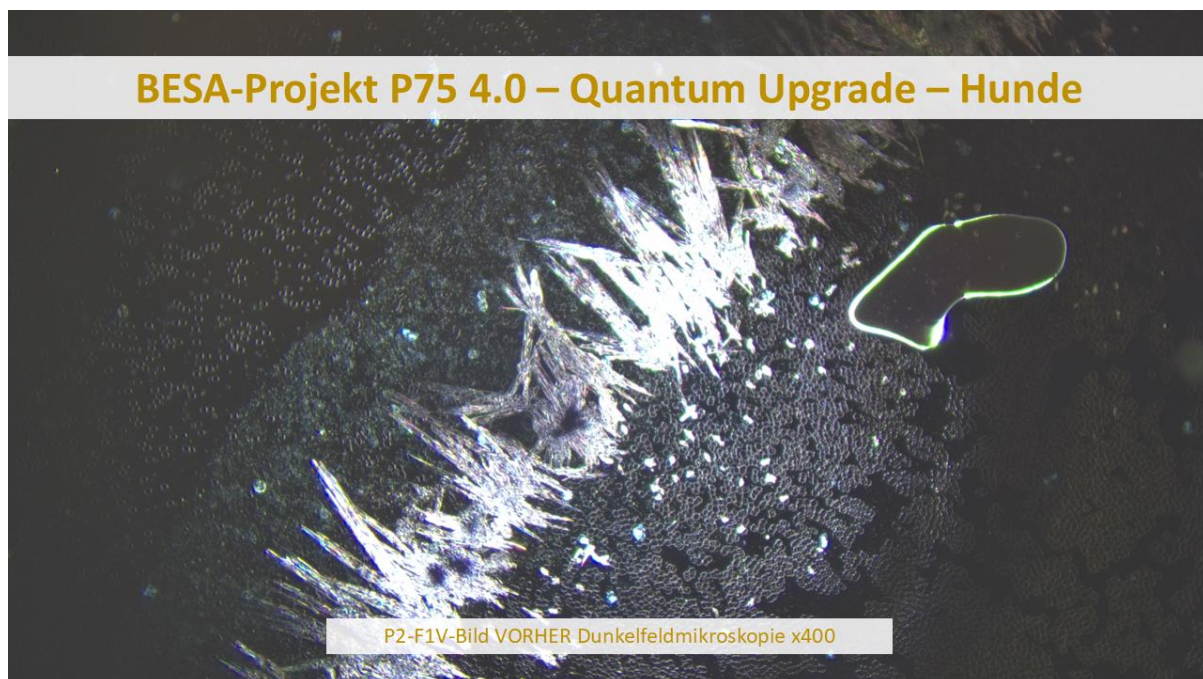
- epileptic seizures
- Low energy and tired
- Digestive problems (spleen-pancreas) (see BESA project P75 4.1)
- seems to have no love or joy for life

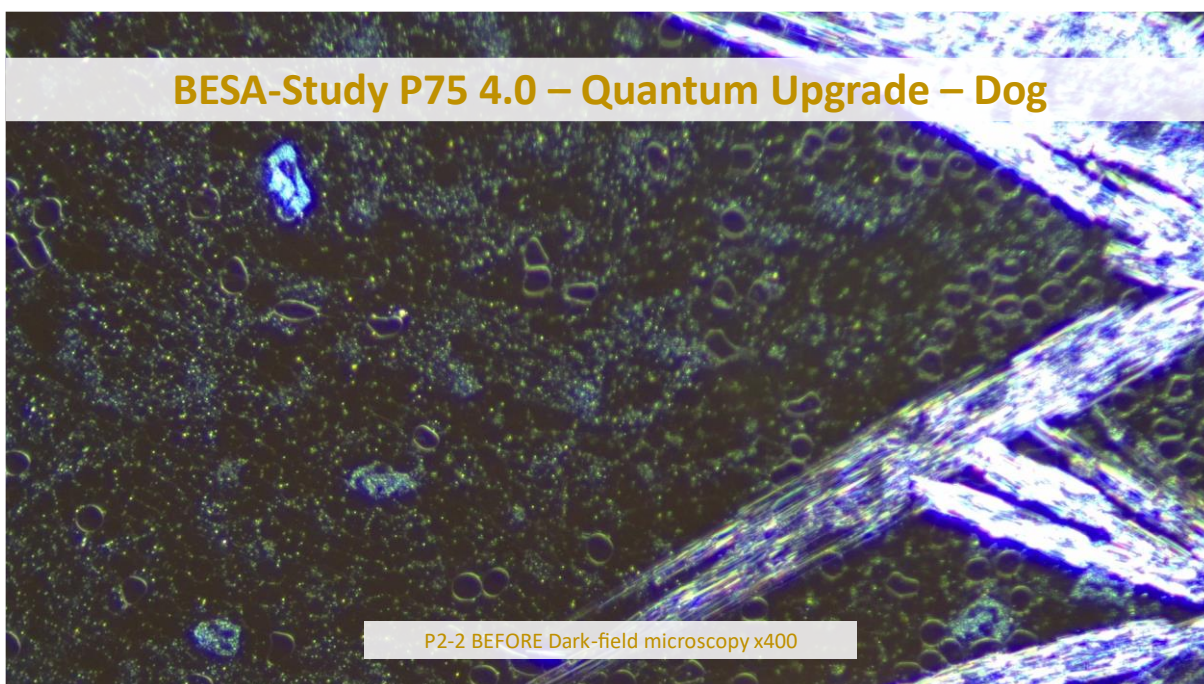
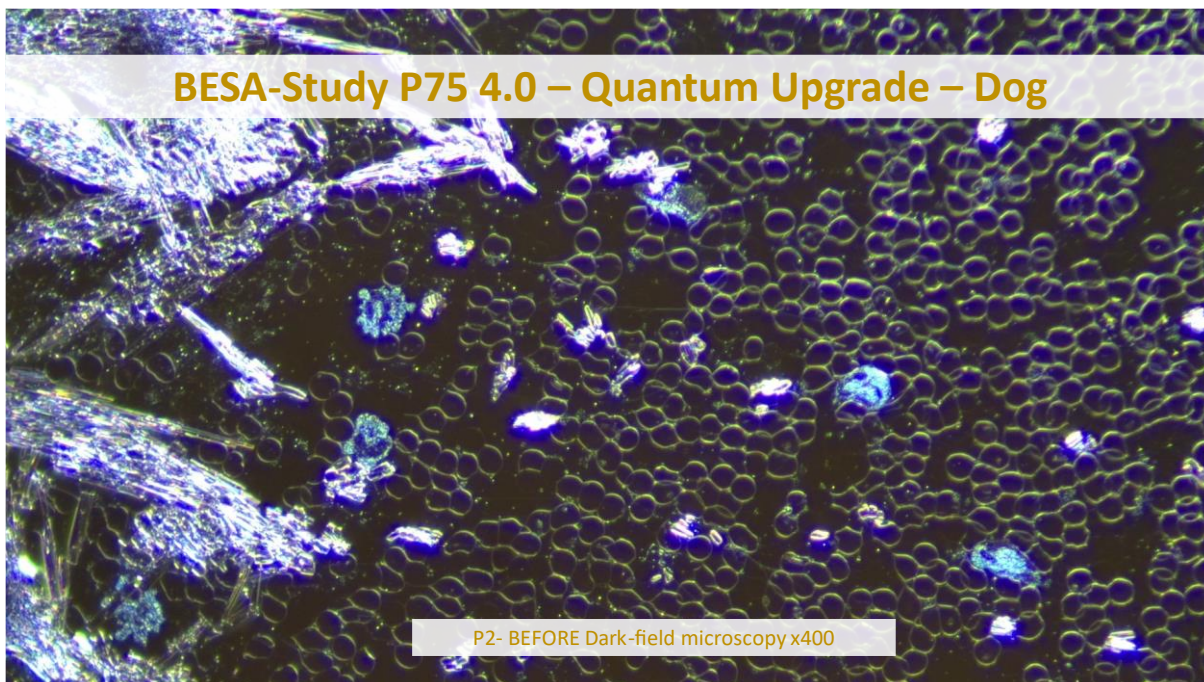
FIGS. 1 to 3 BELOW show an extract of the blood condition of the subject after microscopy. The microscopy takes place immediately after the blood sample has been taken.

Bizarre crystal formations (sclero-symplasts) are clearly visible in all images, which indicate a high acid load (e.g. uric acid, joint load - over-rejection). The formation of agglutination of the erythrocytes indicates oxidative stress (overrejection - Mucor type).

Furthermore, there is a large number of active white blood cells paired with many spiroid symprotites (Candida, intestinal contamination or heavy metal contamination?).

Figure 3 shows severely deformed erythrocytes and shadow cells (ghosts). They are also called haemolysing erythrocytes and are an indication of stressful spike proteins. They promote the decay process of erythrocytes, white blood cells and the blood environment.





Subject 2 BB

Experimental group AFTER

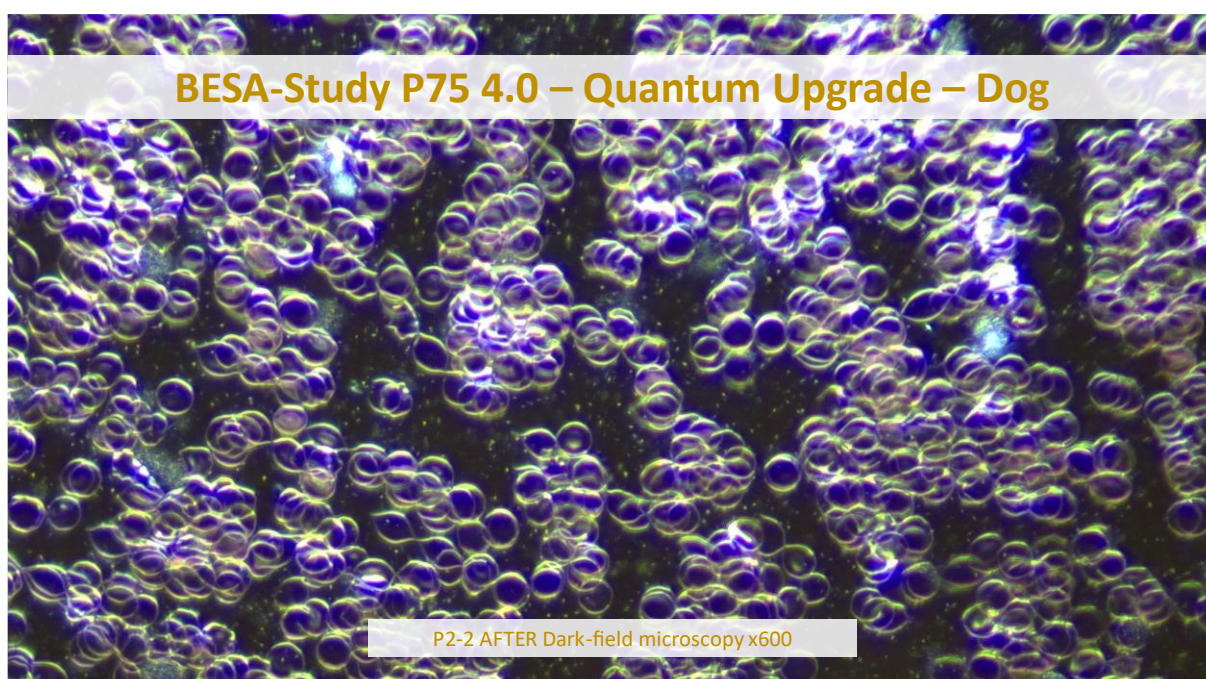
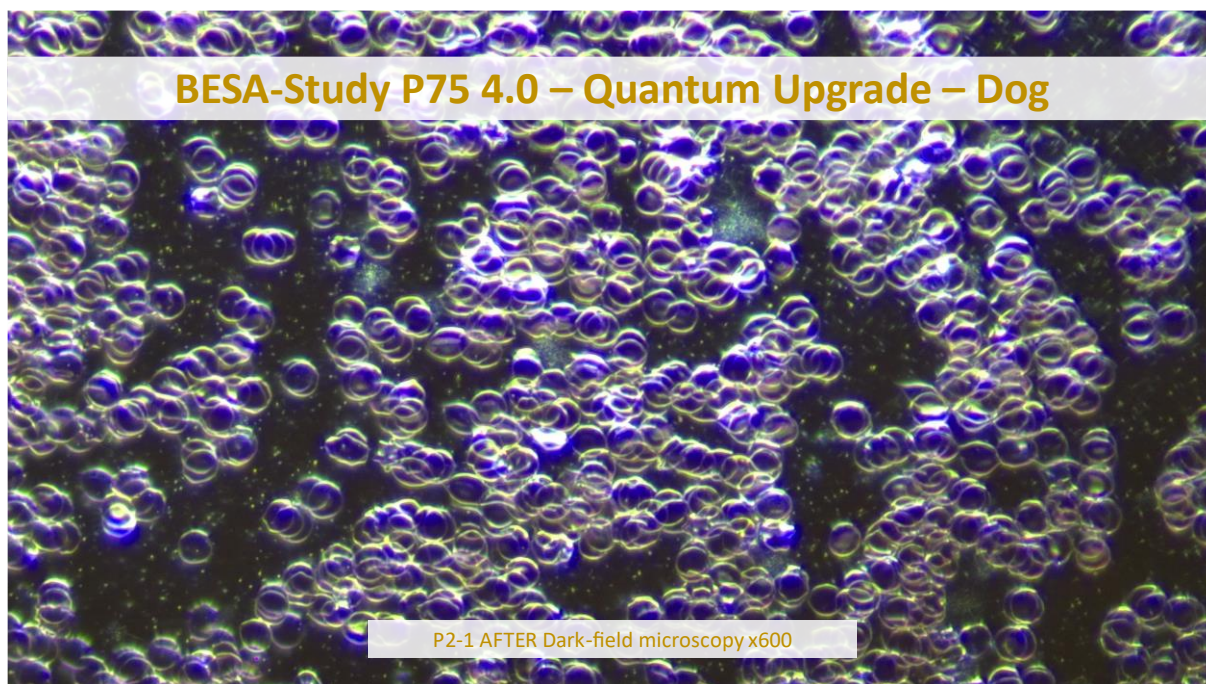
The following FIGURES 1-3 BELOW show an extract of the blood condition of the test person after the microscopy and AFTER the confrontation of the test person with the test object.

The AFTER microscopies were taken almost 4 weeks after the subject was confronted with the test object.



The images were again taken a few minutes after the blood sample was taken. All 3 images show that the stressful, in part highly pathogenic factors from the BEFORE microscopies have largely harmonised (transformed or converted). The erythrocytes show a greatly improved shape and characteristics. At the same time of comparison as the microscopy BEFORE, no parasitic loads are recognisable. The white blood cells are also regular and dynamic.

Some target cells (Figures 2 and 3) still indicate an over-referral. The paired cells represent a renal burden (could again be related to hyperproteinisation). Erythrocytes with vacuoles can also be seen in isolated cases. All in all, signs of a real regression of the blood environment in the sense of bacterial cyclogeny.



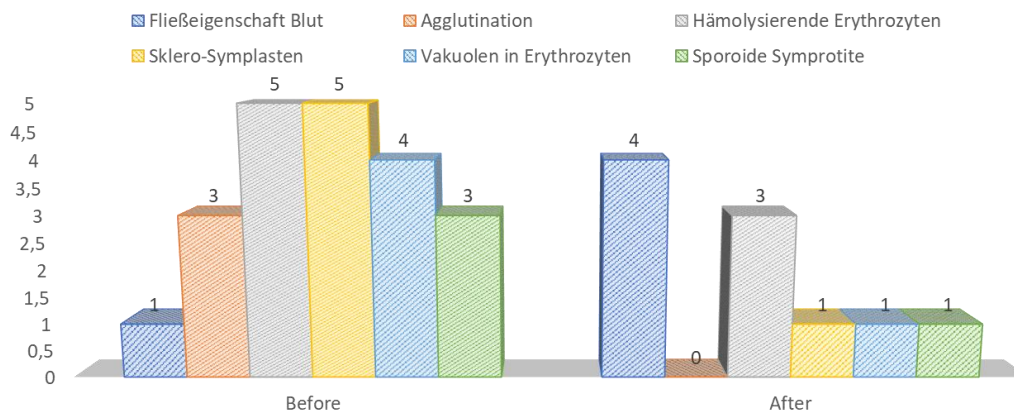


Health status after:

- currently no more epileptic seizures
- much more energetic and alert
- Digestive problems are getting better (spleen-pancreas)
- seems more loving and joyful towards life

See also project description P75 4.1.1 and personal feedback form page 35.

BEFORE-AFTER



	Before	After
Fließeigenschaft Blut	1	4
Agglutination	3	0
Hämolysierende Erythrozyten	5	3
Sklero-Symplasten	5	1
Vakuolen in Erythrozyten	4	1
Sporoides Symptotite	3	1



Subject 3 SL

Experimental group BEFORE

Female: SL, Mischling
Date of birth: 10/04/2020, 5 Years old
Body weight: 23kg

Health status:

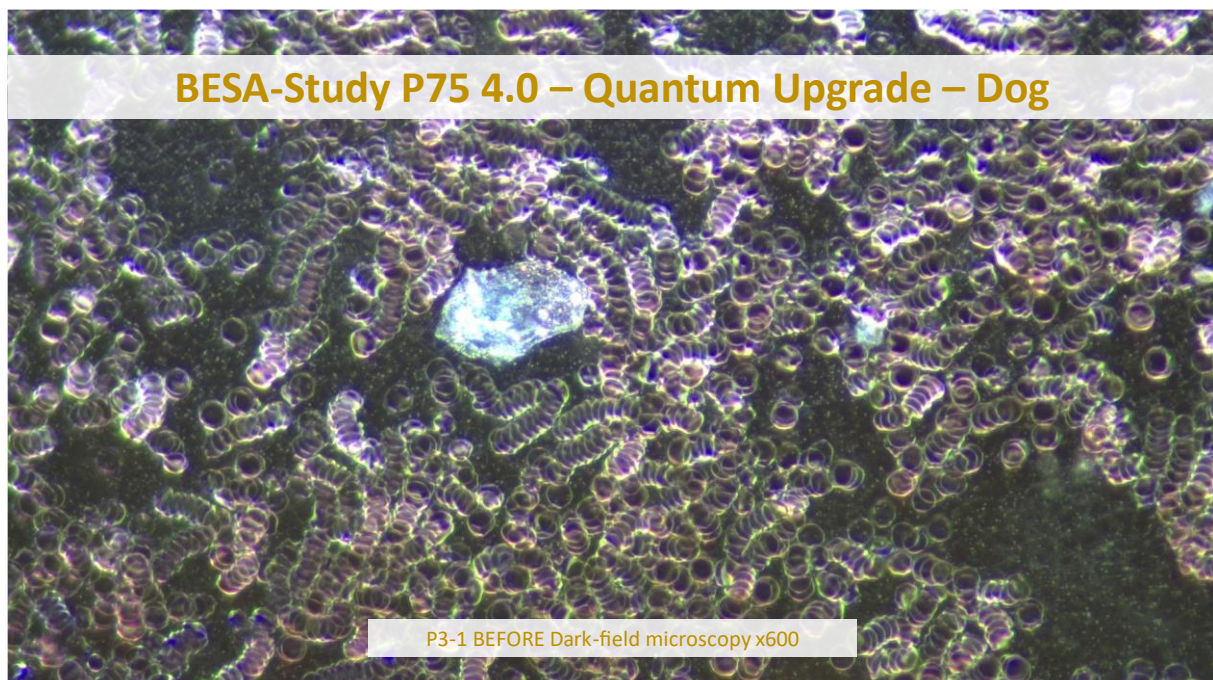
- withdrawn and shy
- Problems with digestion and pancreas
- withdrawn towards strange dogs
- seems listless

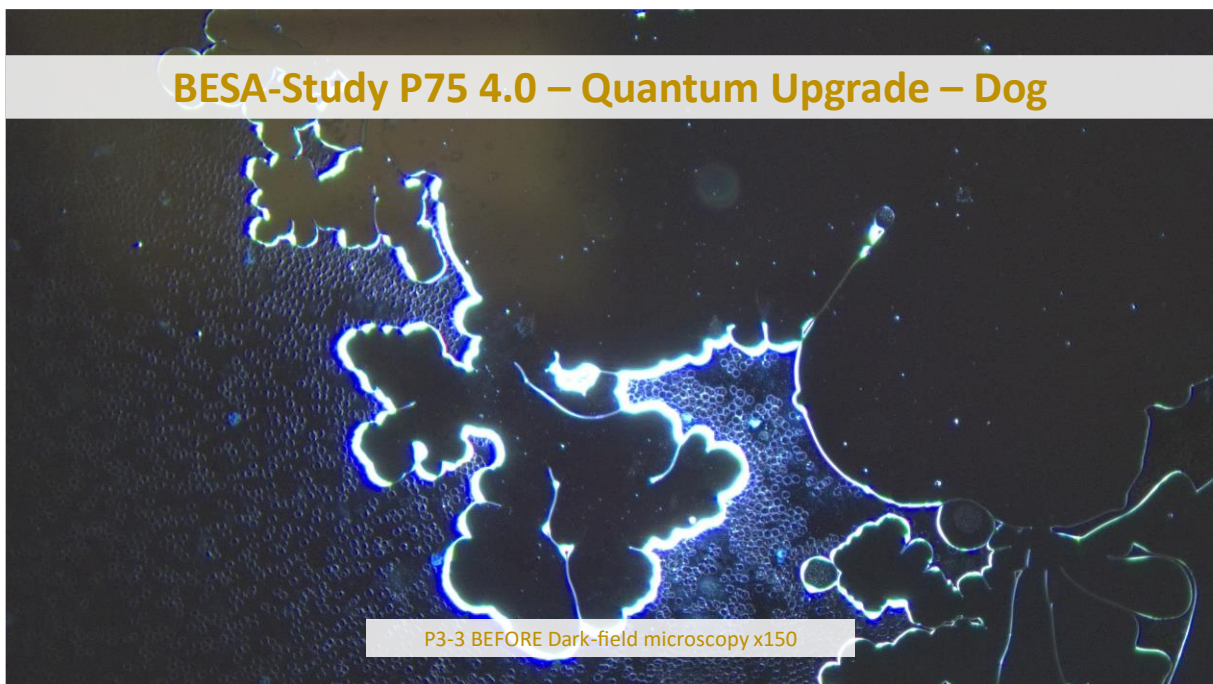
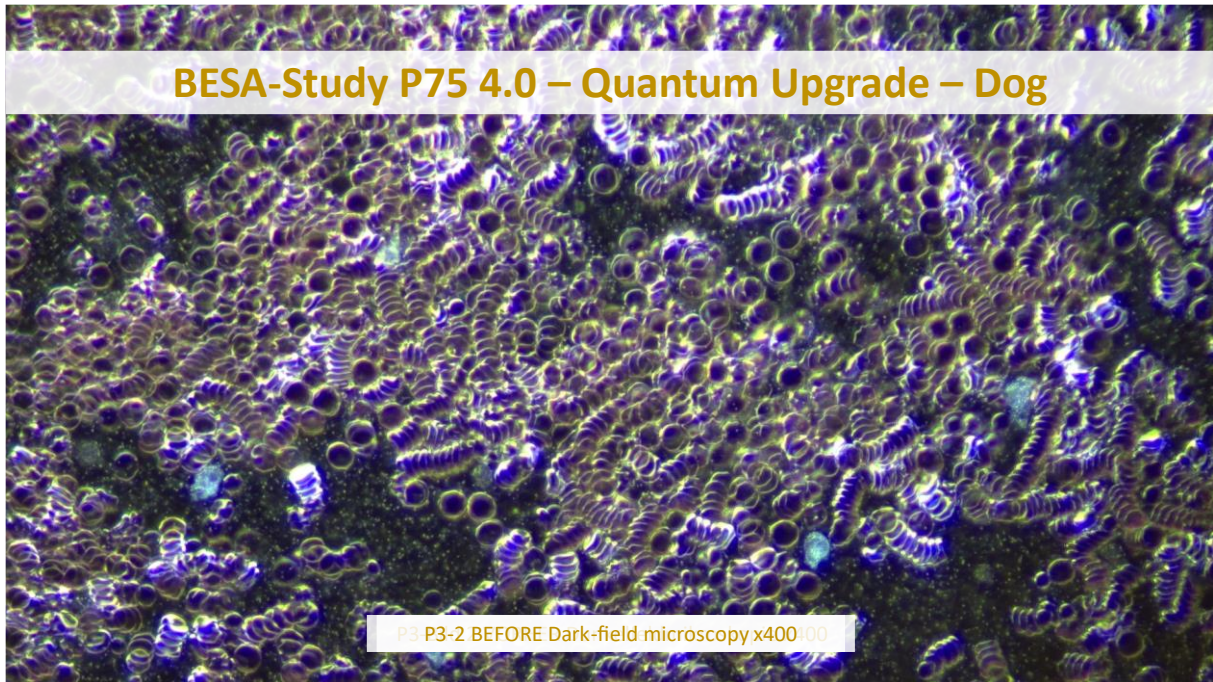
FIGS. 1 to 3 BELOW show an extract of the blood condition of the subject after microscopy. The microscopes were taken immediately after the blood sample was taken.

All images clearly show the formation of gel rolls (indication of hyperacidity, over-rejection and strong influence of electromagnetic interference fields), as well as agglutination of the erythrocytes (oxidative stress, over-rejection, Mucor type).

A mucoid protein slag conglomerate (fungal structure) is clearly visible in the centre of FIGURE 1 BOTTOM CENTRE.

Furthermore, in FIGURE 3 BOTTOM, there are drying forms which indicate intestinal stress as well as haemolysing erythrocytes (ghosts). They are an indication of stressful spike proteins. They promote the decay process of erythrocytes, white blood cells and the blood environment.



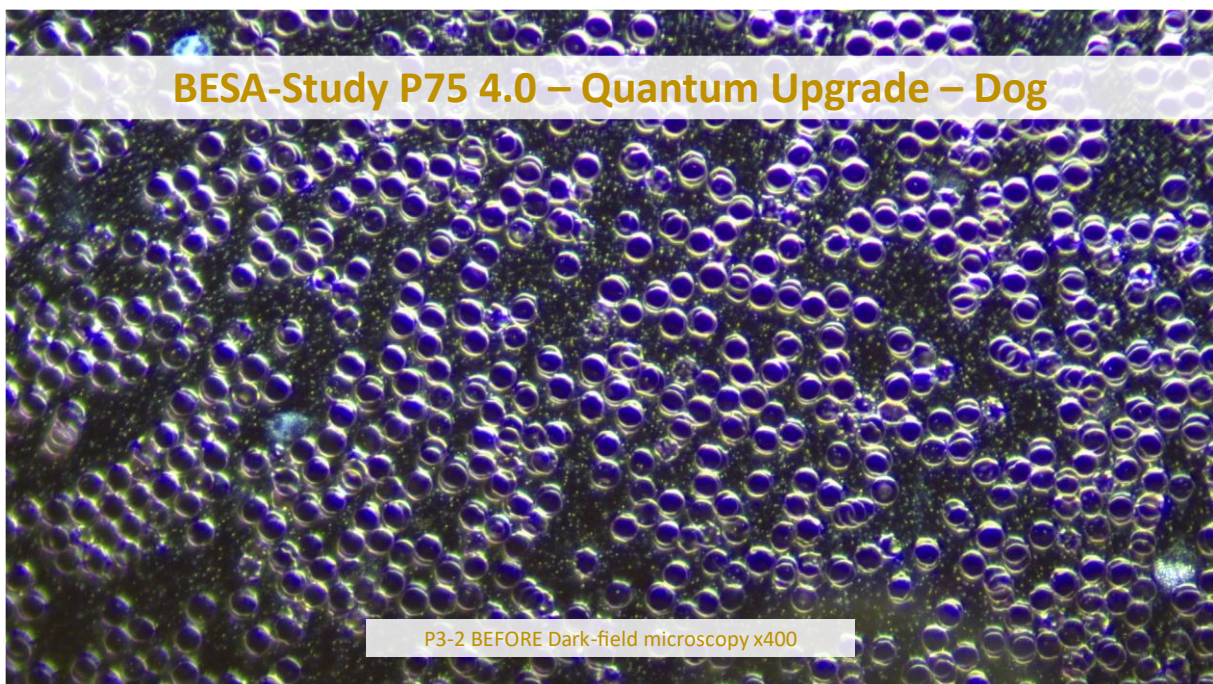
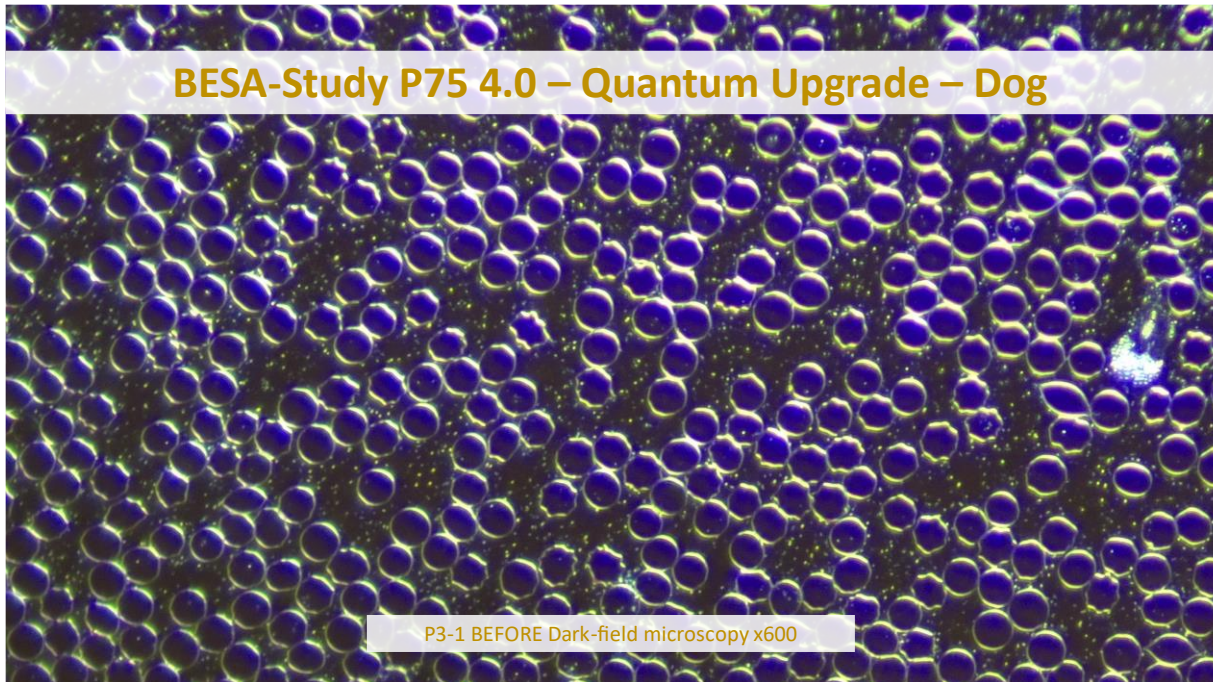


Sub 3 SL

Experimentalgruppe NACHHER

The following FIGURES 1-3 BELOW show an extract of the subject's blood condition after microscopy and AFTER the subject was confronted with the test object.

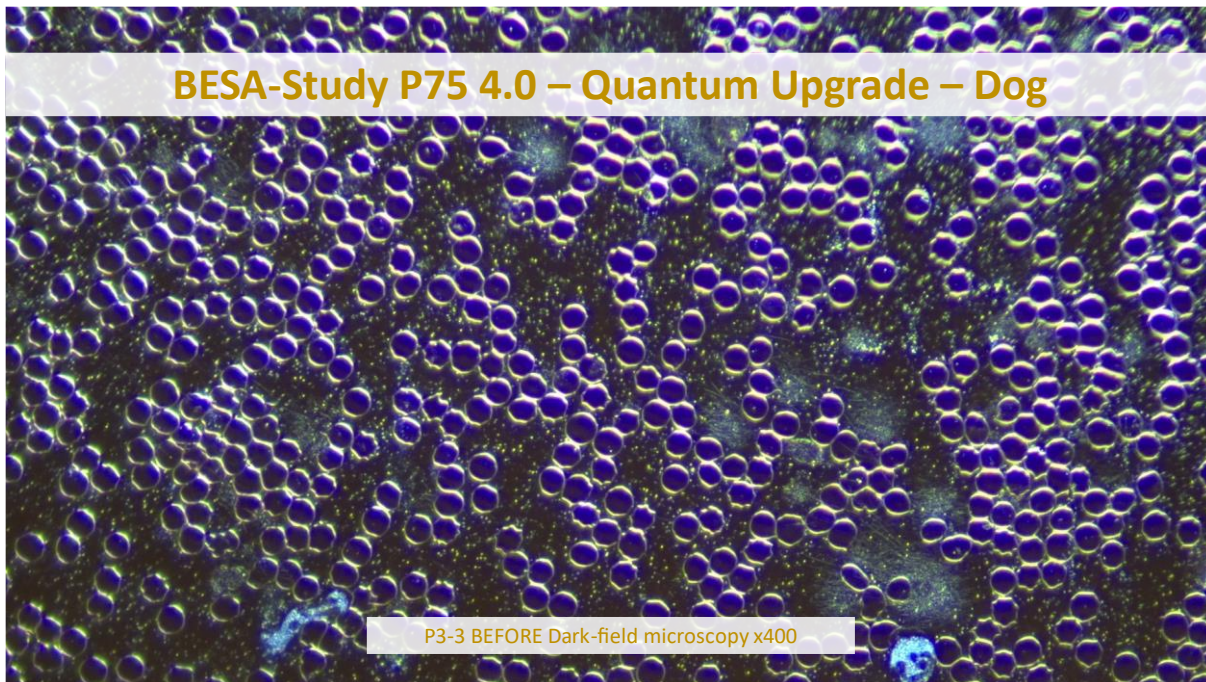
The AFTER microscopies took place almost 4 weeks after the subject was confronted with the test object.



The images were again taken a few minutes after the blood sample was taken.

All 3 images show that the stressful, sometimes highly pathogenic aspects from the BEFORE microscopy have largely harmonised (transformed or converted).

The erythrocytes show a marvellous shape and characteristics. At the same time of comparison as the microscopy BEFORE, only isolated paired cells (kidney) and a few bear paws (indentations on the cell membrane of the erythrocytes) can be seen. The white blood cells also appear regular and dynamic. The paired cells could again be related to hyperproteinisation. Here you can clearly see the signs of a real regression of the blood environment in the sense of bacterial cyclogenesis.

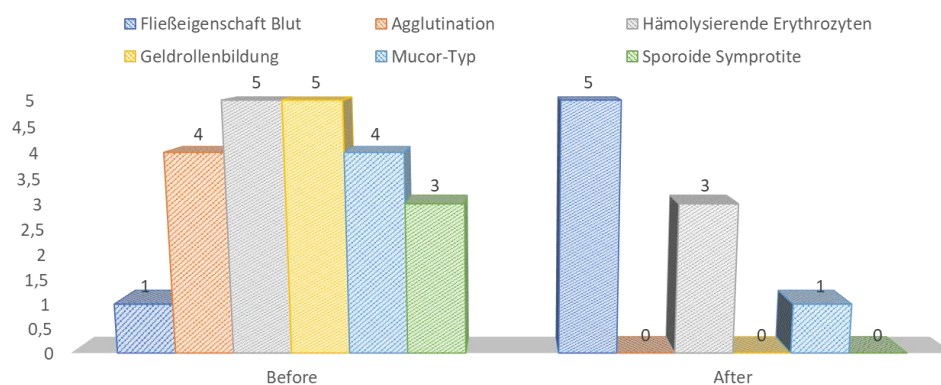


State of health AFTER:

- withdrawn yes
- shy no - but withdrawn towards strange dogs
- Digestion and pancreas much better
- Skin appearance completely clean
- otherwise seems more lustful again

See in particular the changed measured values of the BESA individual tests in the project description P75 1.1 on pages 42 and 43 as well as the feedback form from the pet owners on page 44.

BEFORE-AFTER OVERVIEW



	Before	After
Fließeigenschaft Blut	1	5
Agglutination	4	0
Hämolsierende Erythrozyten	5	3
Geldrollenbildung	5	0
Mucor-Typ	4	1
Sporoide Symptotite	3	0



Subject 4 PE

Experimental group BEFORE

Female: PE, Pekingesese
Date of birth: unknown, from the shelter, approx 15 years old
Body weight: approx 7kg

State of health: heavily burdened!

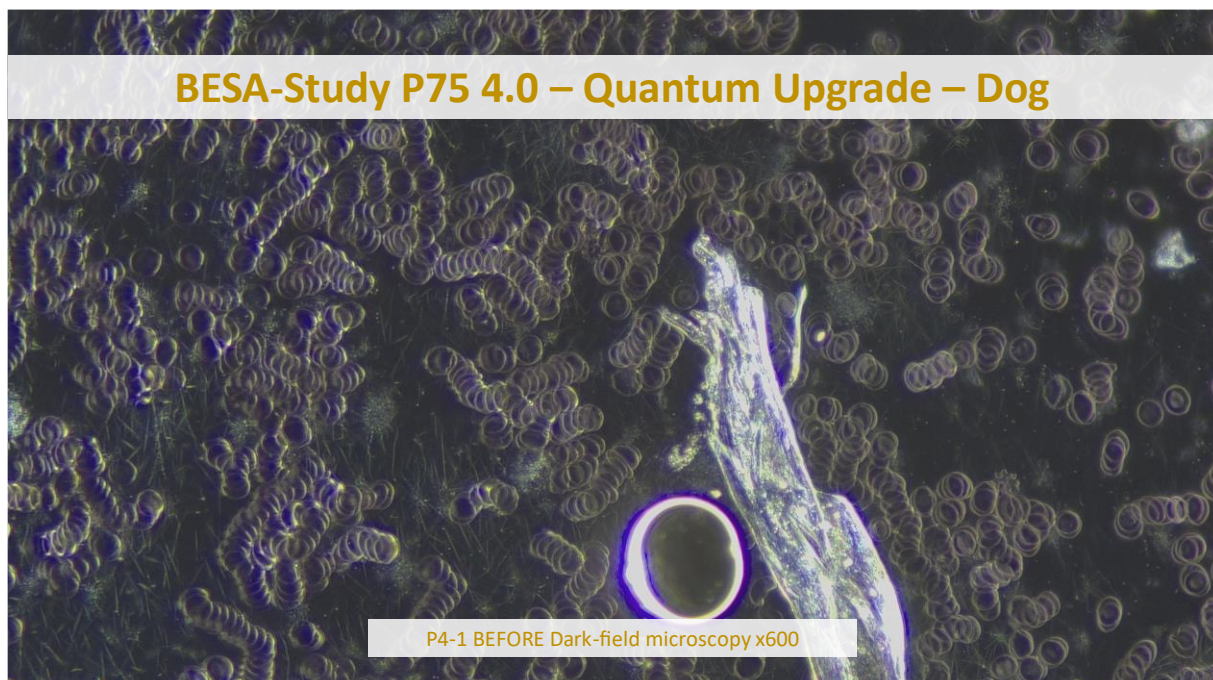
- severe signs of paralysis
- trembles with pain all over his body
- Difficult to take blood samples
- shy and withdrawn

FIGS. 1 to 3 BELOW show an extract of the blood condition of the subject after microscopy. The microscopes were taken immediately after the blood sample was taken.

All images clearly show the formation of money rolls (indication of hyperacidity, over-rejection and strong influence of electromagnetic interference fields).

In FIGURE 1 BOTTOM, a bizarre crystal formation (sclero-symplast) dominates, which indicates a high acid load (e.g. uric acid, joint load - over-referral). Furthermore, a strong parasitic load on the erythrocytes can be seen in the centre of the image immediately after the blood sample was taken.

Deformed erythrocytes and shadow cells (ghosts) or haemolysing erythrocytes can also be seen on this image. They are an indication of harmful spike proteins. They promote the decay process of erythrocytes and white blood cells.



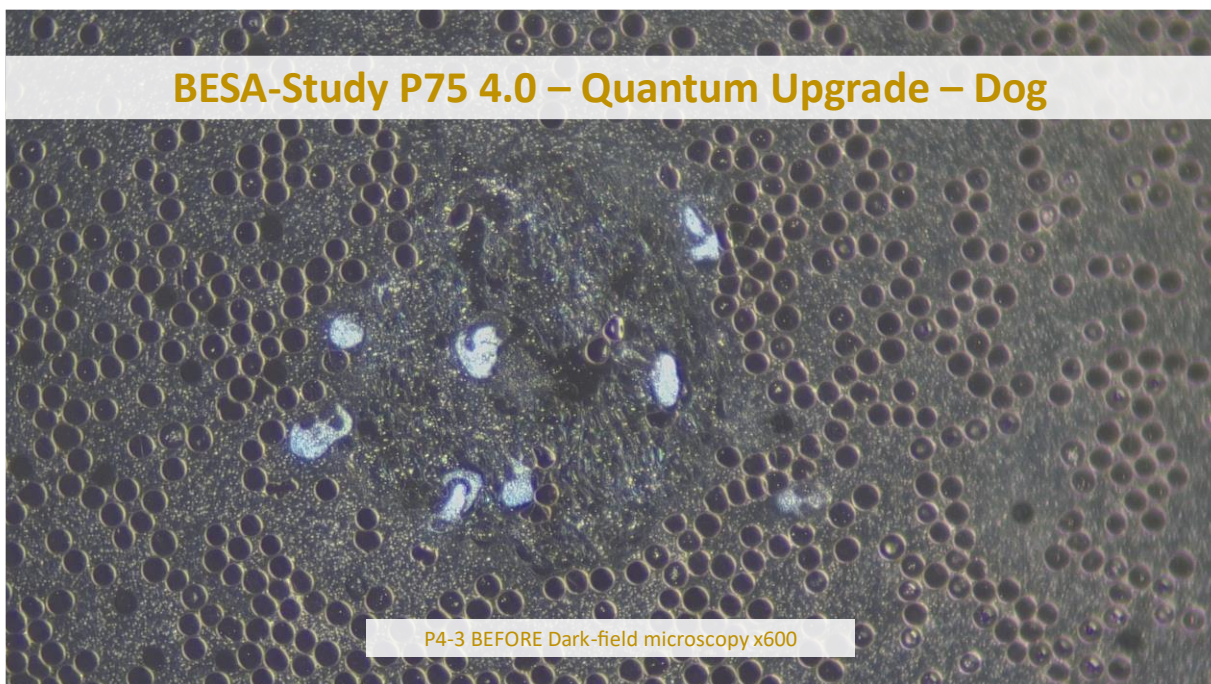
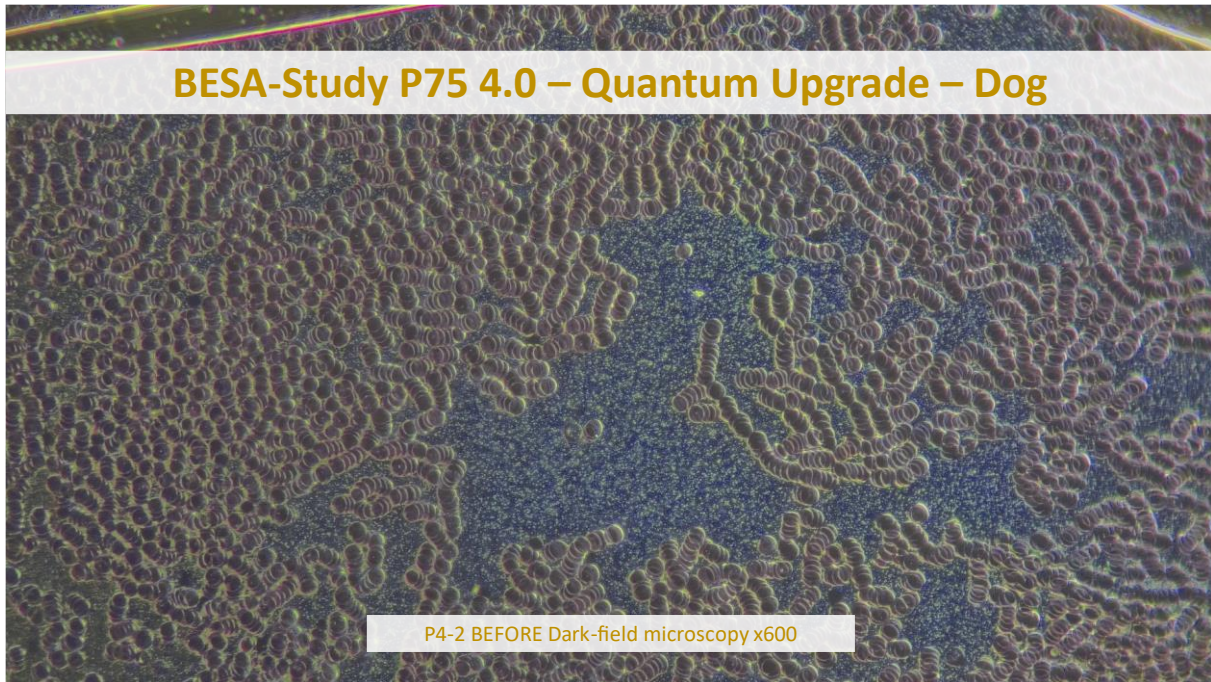


FIGURE 2 ABOVE, like FIGURE 3 ABOVE, shows a massive spermite development (snow flurry dark field bodies) as an indication of inflammation or allergies.

In the centre of FIGURE 3 ABOVE, a mucoid-aspergillus fungal structure is clearly visible.

All these recognisable aspects represent a highly pathogenic blood picture and confirm the symptoms of the test person.

Subject 4 PE

Experimental group AFTER



The following can be said about the after microscopy:

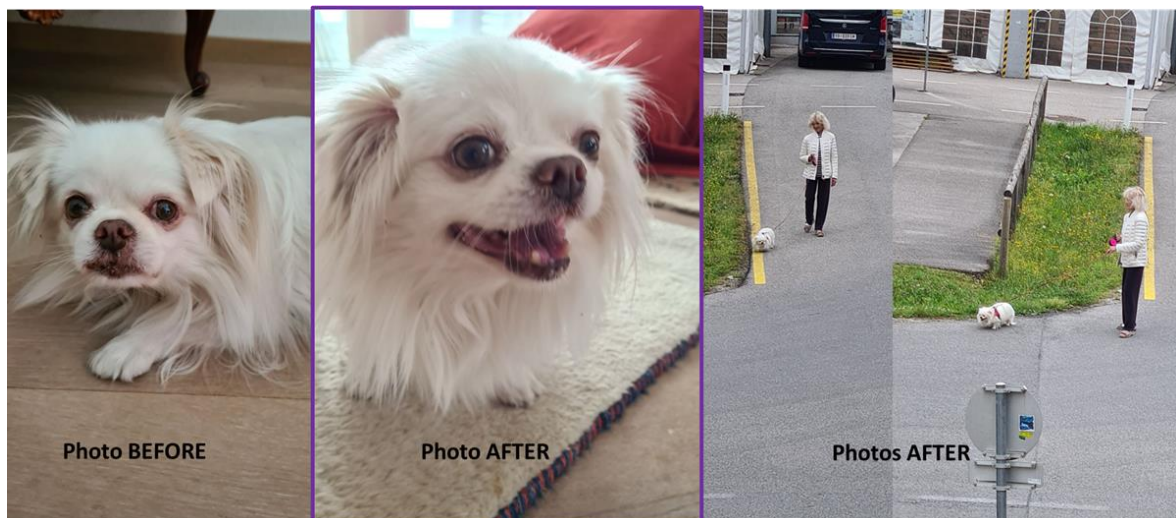
The dog's owner is very old and has not been sufficiently competent (dementia) for a long time to cope with the demands of keeping a dog, especially not when, as in this case, the dog is so heavily burdened. For this reason, there was no further follow-up microscopy. The owner was more or less forced to have the bitch put to sleep.

This much can be said: Within 2 days, the dog's signs of paralysis resolved. See also the following photos and BESA tests AFTER!

State of health AFTER:

- the severe signs of paralysis seem to have disappeared
- Bitch is walking again after 2 days, she jumps up and down in the living room, runs in circles for minutes out of sheer joy.
- The trembling all over her body from pain is now only intermittent
- seems grateful and her movements are much more cognitive again (see photos BEFORE and AFTER below)

Please also see the significantly improved values of the BESA individual tests on pages 52 and 53.





Subject 5 SE

Experimental group BEFORE

Female: SE, Golden Doodle
Date of birth: 20/02/2021, 4 Years old
Body weight: 25,5kg

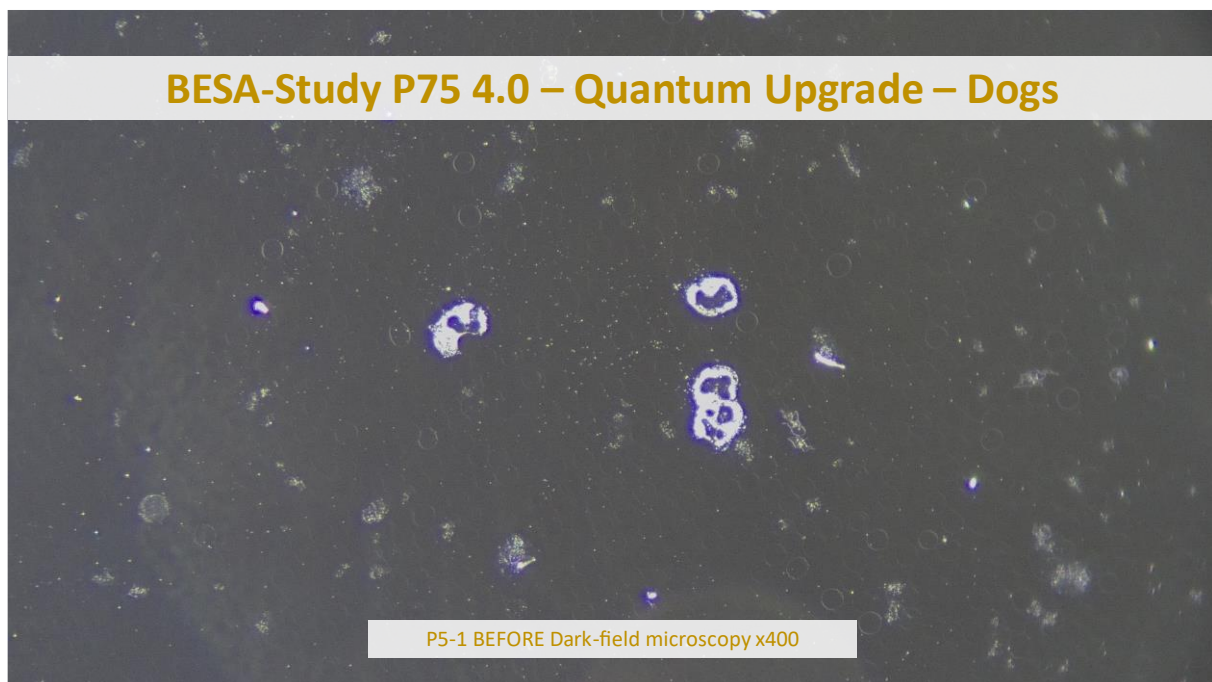
State of health:

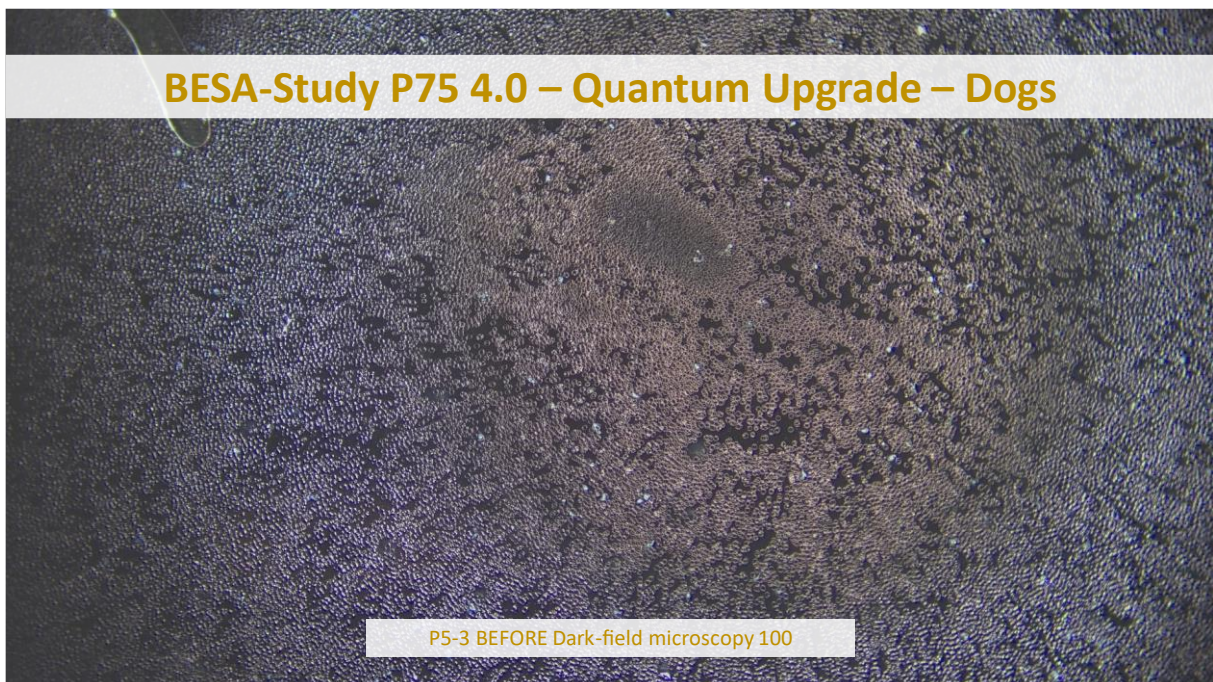
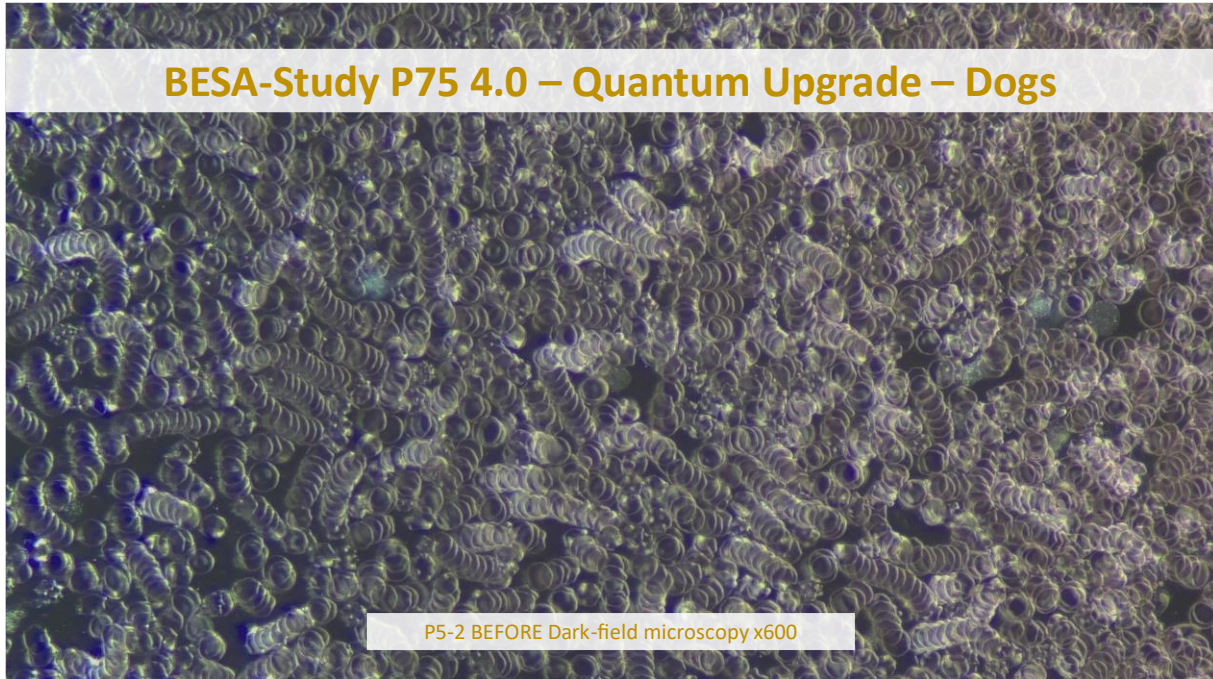
- Partly severe allergies
- Intestinal diverticula
- Skin problems
- Food intolerances
- very lively (sweet)
- difficult environment on the part of the pet owner

FIGURES 1 to 3 BELOW show an extract of the blood condition of the subject after microscopy. The microscopy takes place immediately after the blood sample has been taken.

FIGURE 1 BELOW shows deformed erythrocytes and shadow cells (ghosts) or haemolysing erythrocytes. They are an indication of stressful spike proteins. They promote the decay process of erythrocytes and white blood cells.

FIGURES 2 and 3 show a strong formation of money rolls (indication of hyperacidity, over-rejection and strong influence of electromagnetic interference fields) as well as vacuoles in the erythrocytes. FIGURE 3 BOTTOM also shows strong agglutination and huge liver islands (indication of liver stress). These images represent an acute, highly pathogenic condition





Subject 5 SE

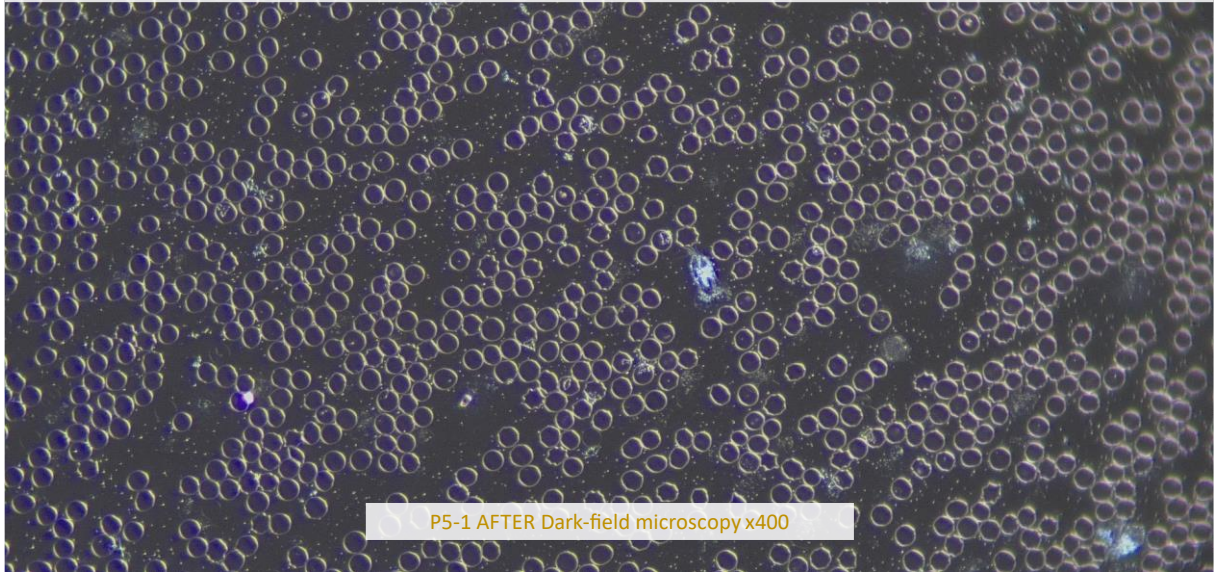
Experimental group AFTER

The following FIGURES 1-3 BELOW show an extract of the subject's blood condition after microscopy and AFTER the subject was confronted with the test object.

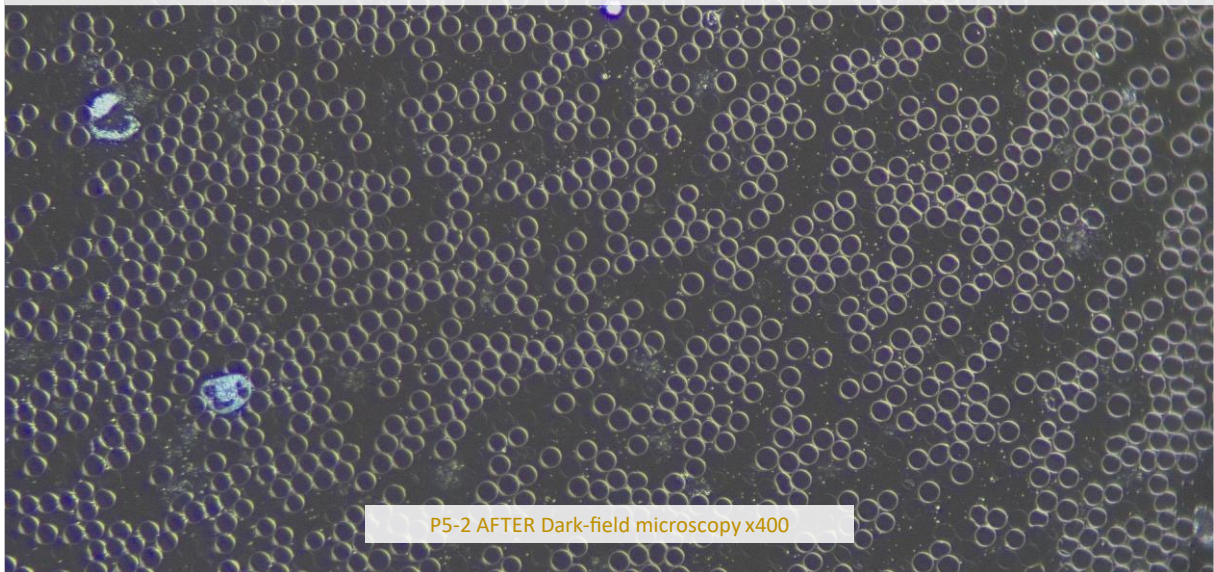
The AFTER microscopies took place almost 4 weeks after the subject was confronted with the test object.



BESA-Study P75 4.0 – Quantum Upgrade – Dogs



BESA-Study P75 4.0 – Quantum Upgrade – Dogs

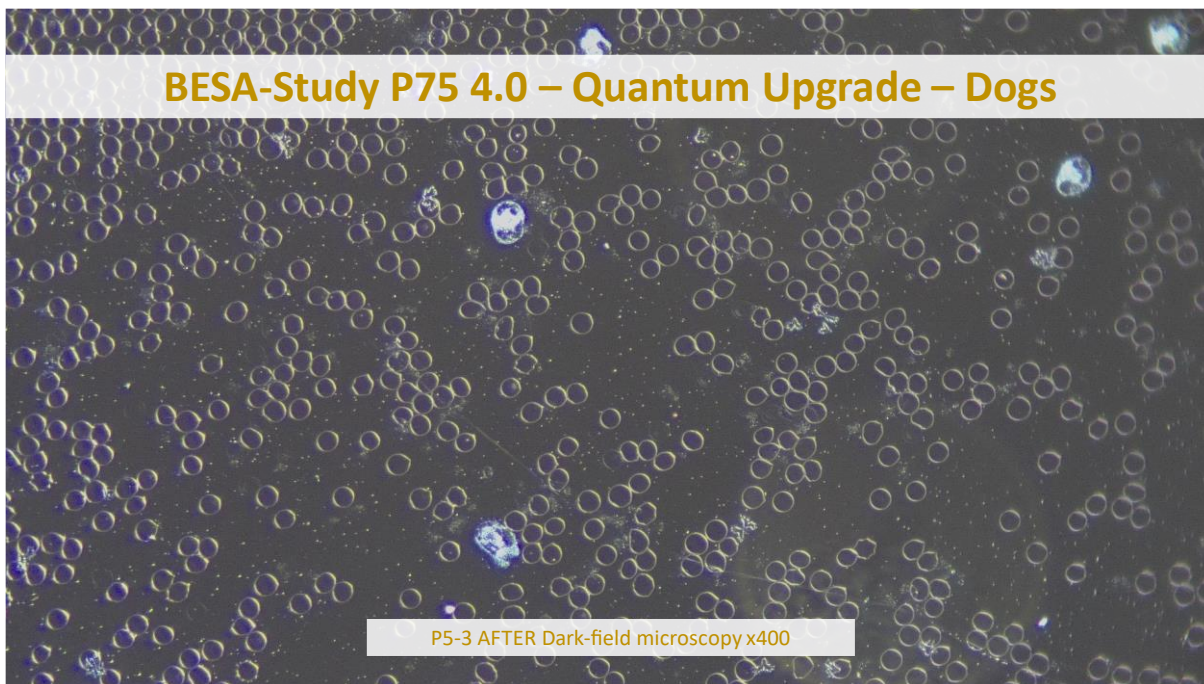


The images were again taken a few minutes after the blood sample was taken.

All 3 images show that the stressful, sometimes highly pathogenic factors from the BEFORE microscopy have largely harmonised (transformed or converted). The erythrocytes show a marvellous shape and characteristics.

At the same time of comparison as the microscopy BEFORE, no money rolls or liver islands can be seen.

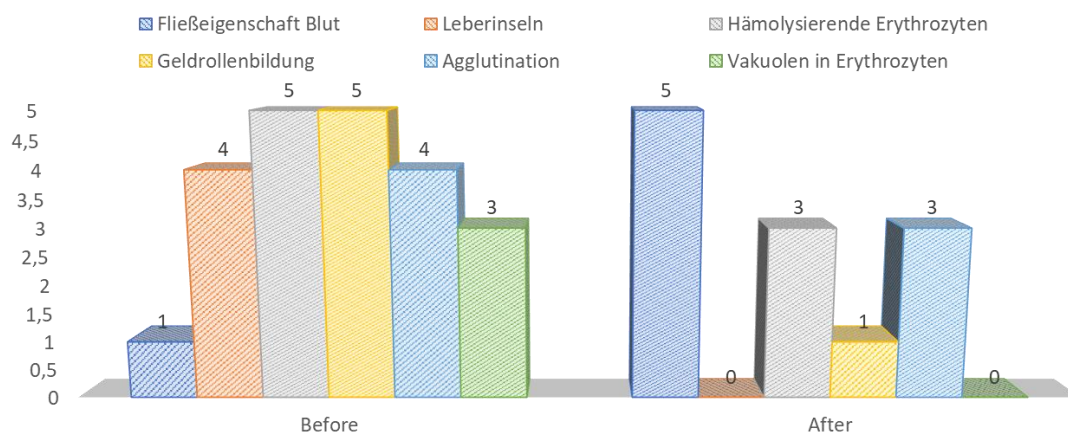
The white blood cells are also regular and dynamic.



State of health AFTER:

- Allergies weakened
- strong detoxification reactions (intestinal diverticula?), male dog tired and withdrawn
- Skin problems much better
- still difficult environment on the part of the pet owners

BEFORE-AFTER OVERVIEW



	Before	After
Fließeigenschaft Blut	1	5
Leberinseln	4	0
Hämolysierende Erythrozyten	5	3
Geldrollenbildung	5	1
Agglutination	4	3
Vakuolen in Erythrozyten	3	0



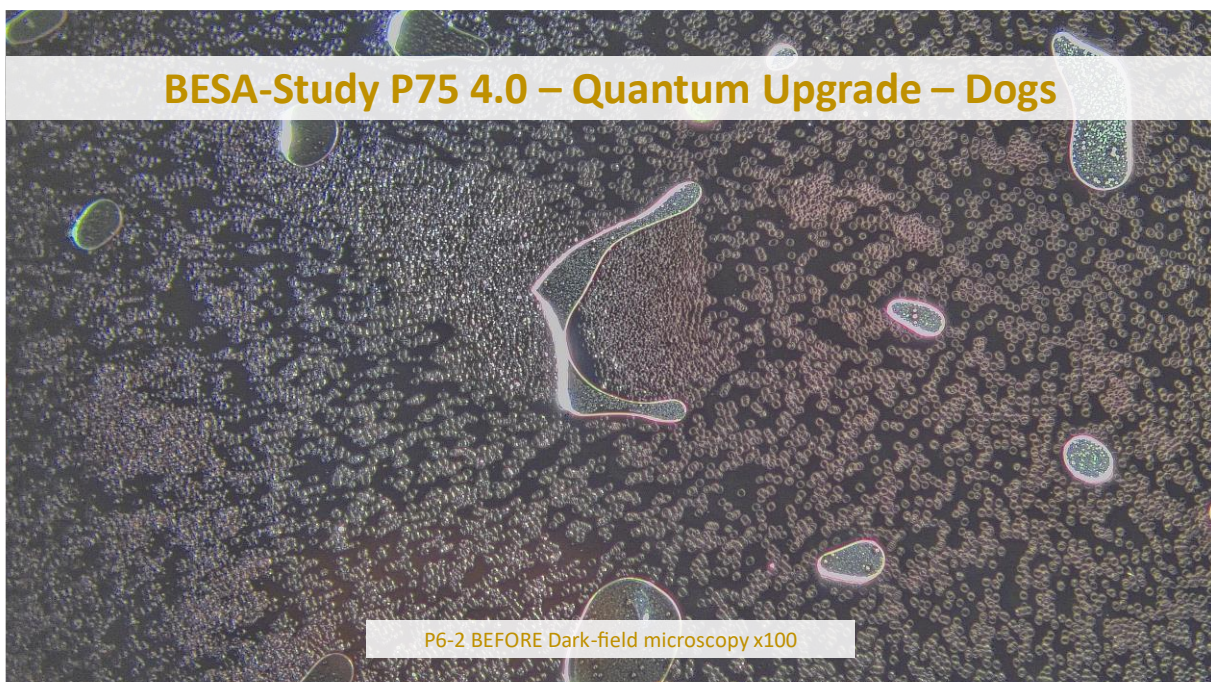
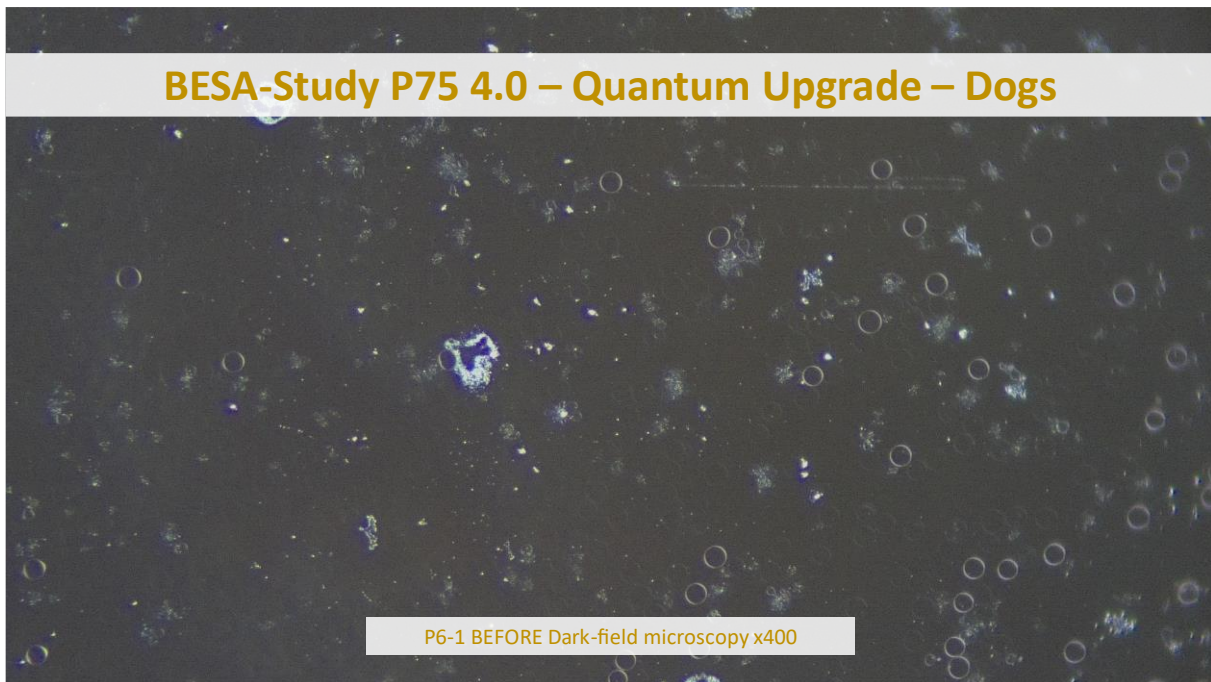
Subject 6 FM

Experimental group BEFORE

Male: MB, Labrador
Date of birth: 2013, 12 Years old
Body weight: 25kg

State of health:

no abnormalities, growth on the neck - right side, very lively and friendly





FIGURES 1 and 2 ABOVE show an extract of the blood condition of the subject after microscopy.

The microscopy takes place immediately after the blood sample has been taken.

FIGURE 1 ABOVE shows deformed erythrocytes and shadow cells (ghosts) or haemolysing erythrocytes. They are an indication of stressful spike proteins. They promote the decay process of erythrocytes and white blood cells.

FIGURE 2 ABOVE shows liver islands as an indication of liver stress.

Subject 6 FM

Experimental group AFTER

The following FIGURES 1-3 BELOW show an excerpt of the subject's blood condition after microscopy of the subject's vital blood. The AFTER microscopies were taken almost 4 weeks after the BEFORE microscopies.

The images were again taken a few minutes after the blood sample was taken.

The AFTER microscopy of the vital blood shows noteworthy and significant changes in the morphological changes in the morphological condition of the vital blood compared to the BEFORE and without the test object.

FIGURES 1 and 2 BELOW show an excerpt of the subject's blood condition after microscopy, i.e. AFTER the subject has been confronted with the test object.

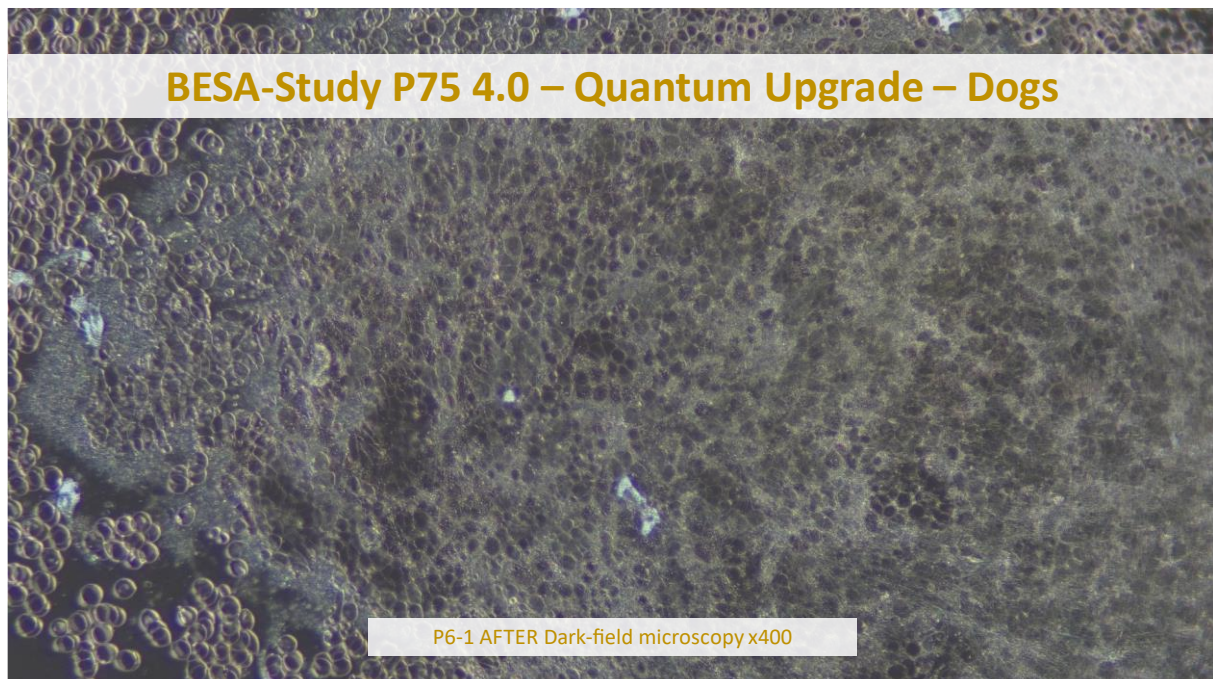


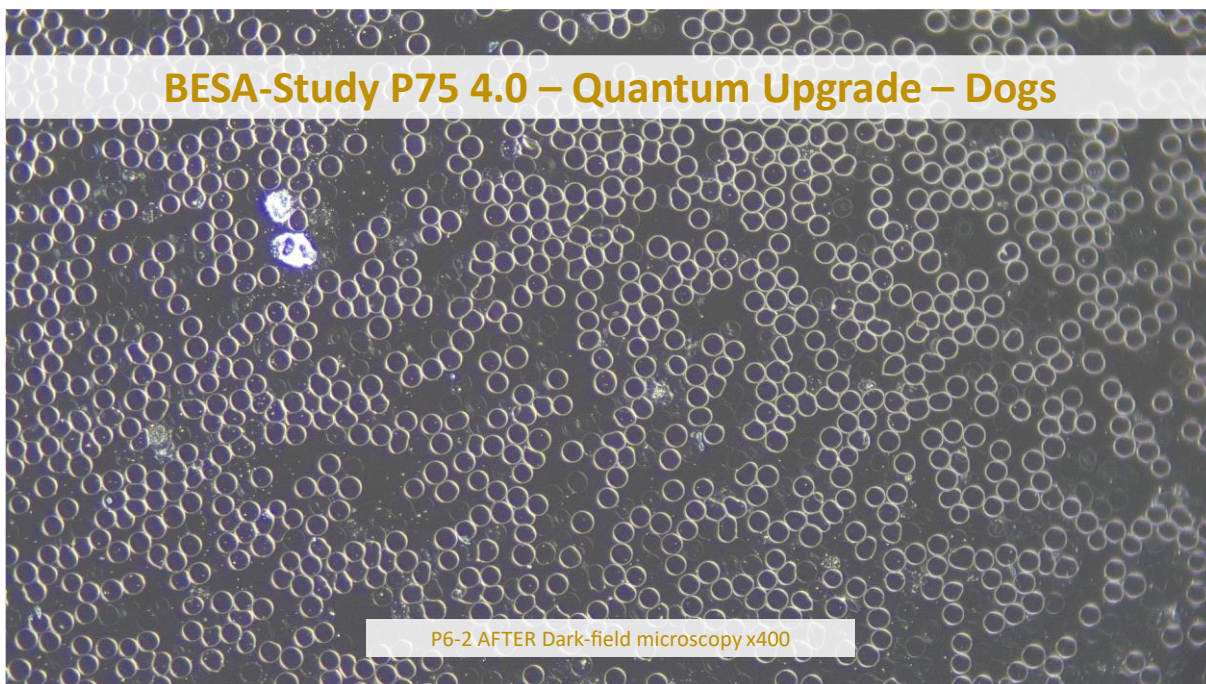
FIGURE 1 ABOVE still shows deformed erythrocytes and shadow cells (ghosts) or hemolytic erythrocytes, albeit reduced. They are an indication of stressful spike proteins. They promote



the decay process of erythrocytes and white blood cells. The strong filit formation in association with the hemolytic erythrocytes confirms the still pathogenic condition.

FIGURE 2 BELOW shows erythrocytes with a regular appearance and, at first glance, an uncontaminated blood environment. On closer inspection, hemolytic erythrocytes can still be seen, which hold the still normal-looking erythrocytes in a certain rigidity.

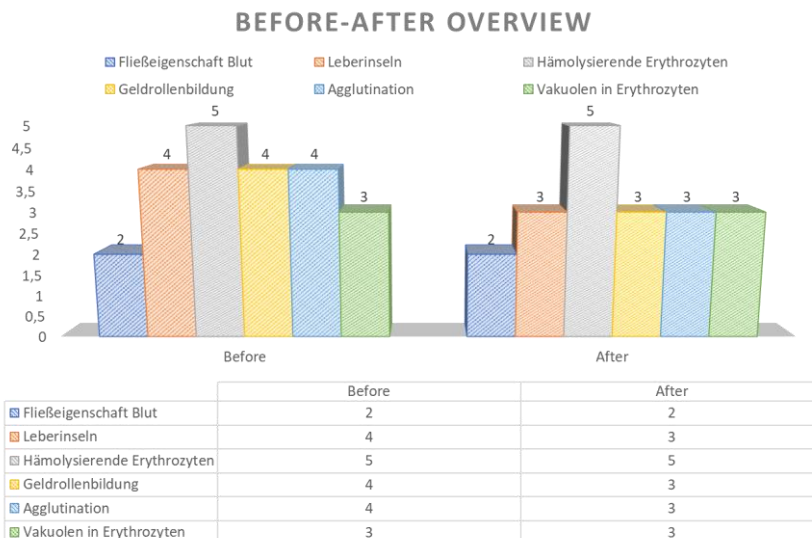
However, a process of increasing apathogenicity in the sense of bacterial cyclogeny can already be recognized (see also FIGURE 3 BELOW



State of health AFTER:

remains unchanged compared to the state of health BEFORE.

- no abnormalities
- Growth on the neck - still on the right side
- otherwise unchanged





Subject 6 FM

Experimental group AFTER 2

The following FIGURES 1-3 BELOW again show an excerpt of the subject's blood condition after microscopy of the subject's vital blood.

The AFTER 2 microscopies were taken about 6 months after the AFTER microscopies from the experimental group.

The images were again taken a few minutes after the blood sample was taken.

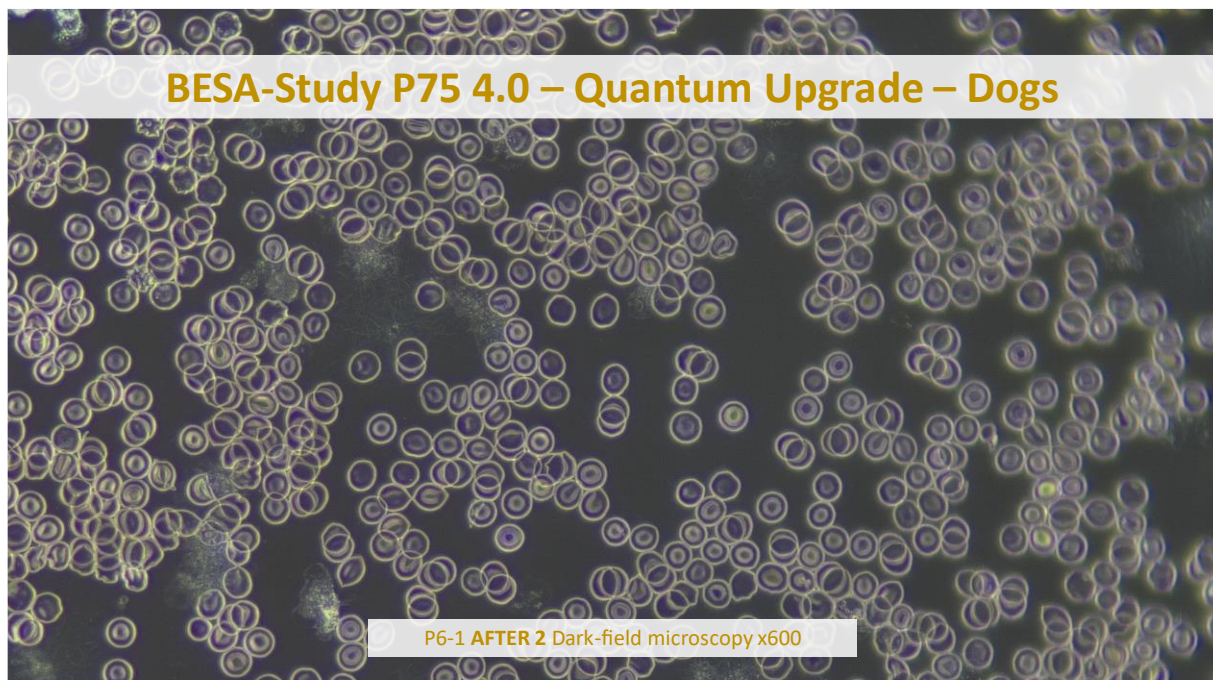
The AFTER 2 microscopies of the vital blood show AFTER the confrontation of the test subject with the test object again show significant changes in the morphological condition of the vital blood.

In all 3 images it can be seen that the stressful, in part highly pathogenic factors from the BEFORE microscopies in the AFTER 2 microscopies were largely (transformed or converted).

The erythrocytes show a wonderful shape and characteristics.

There are no liver islands at the same time of comparison as the BEFORE microscopy present.

Even the strongly hemolyzing erythrocytes (ghosts or shadow cells) have also largely dissolved, which is another significant improvement compared to the improvement compared to the AFTER microscopy

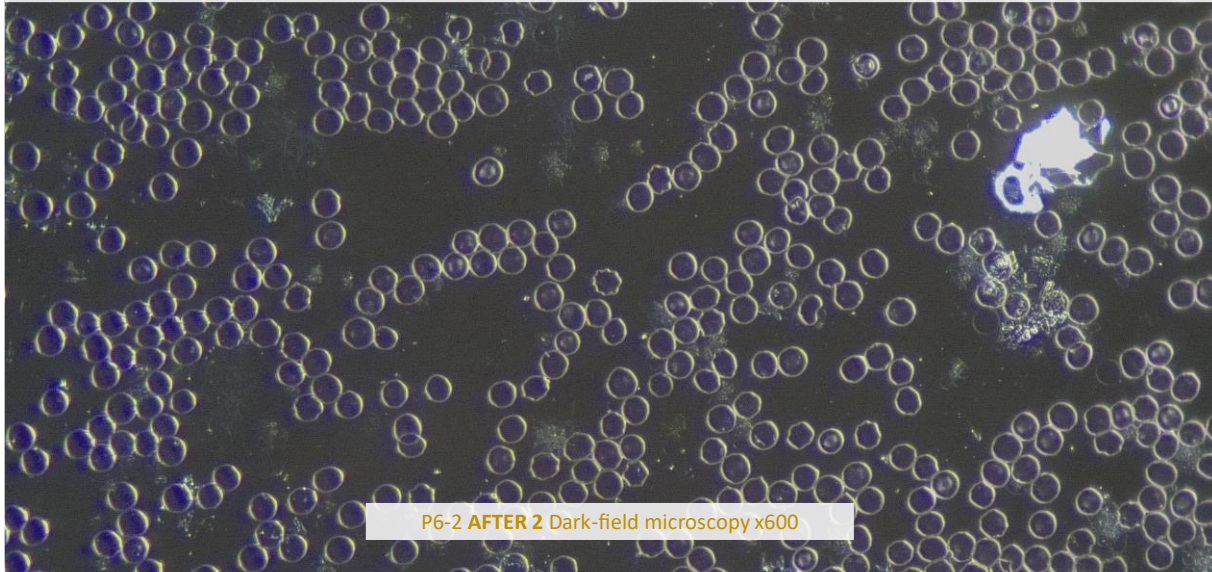


The white blood cells are also regular and dynamic.

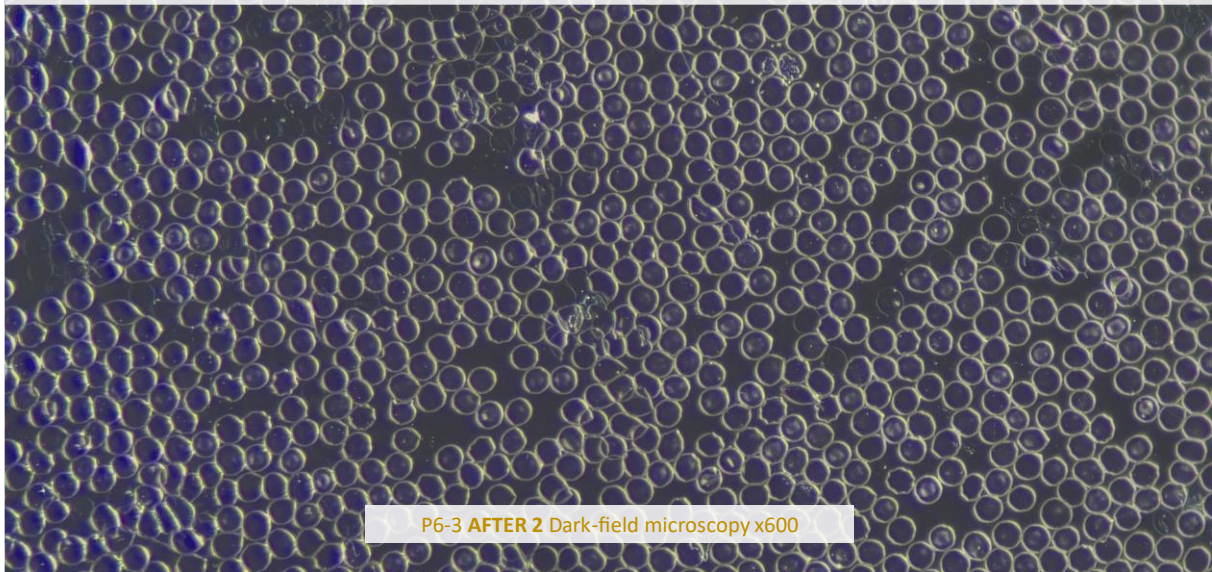
Only a few target cells (liver-spleen disorder) and cogwheel cells are still recognisable (remains of haemolysing erythrocytes). All in all, again a regular development of the blood environment in the sense of bacterial cyclogeny.



BESA-Study P75 4.0 – Quantum Upgrade – Dogs



BESA-Study P75 4.0 – Quantum Upgrade – Dogs



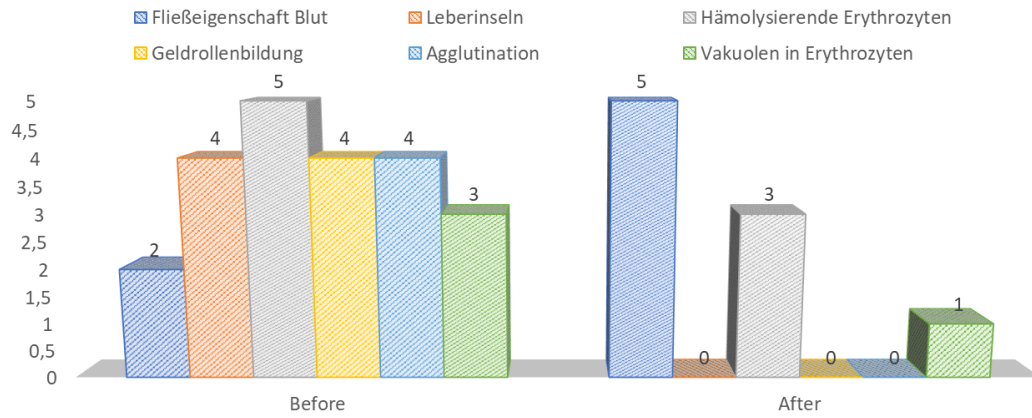
State of health AFTER:

shows significant changes compared to the state of health AFTER.

- no abnormalities
- Growth on the neck - still on the right side, but only slightly palpable



BEFORE-AFTER OVERVIEW



	Before	After
Fließfähigkeit Blut	2	5
Leberinseln	4	0
Hämolysierende Erythrozyten	5	3
Geldrollenbildung	4	0
Agglutination	4	0
Vakuolen in Erythrozyten	3	1



The result of an interdisciplinary perspective on the regulation of chronic stress in dogs

Effect of a quantum technology as a test object using bioenergy-informative system analysis – BESA

As part of this animal-dog study, we investigated the effect of a quantum technology on energy-informative behaviour (in the meridian system) on the health parameters of the animals as test subjects. With the help of bioenergy-informative system analysis (BESA for short), we investigated whether life-promoting changes in the energy-informative status (BESA) of the treated dogs could be detected. In particular, the question was whether a regulation of the factors mentioned, such as energy-informative status, HPA axis (stress axis) or hormone status, can be detected within the energy-informative control circuits or biological structures. Previous studies and their results already indicated that the technology of the test object promotes the energy-informative balance of the organism, stabilises the blood environment and modulates inflammatory processes.

Stressors as the main influencing factors

A remarkable aspect of previous research projects showed evidence of the interaction between emotional stress of the animal owners and the physical health of the animals. A transfer of emotional stressors ("referral") was also clearly manifested in the blood counts and physiological (cell structure) parameters (tested using BESA) of the dogs.

In addition, the inadequate digestion of meat-based diets due to stress-related digestive insufficiency led to further stress in the area of the gut-lung-skin axis.

The influence of stress on animals, regardless of whether it is unconscious stress (traumas, imprints, conflict-based attachments, etc.) or physical stress (e.g. also EMSF) plays a decisive role in relation to the so-called HPA axis (stress axis). The hormonal regulatory systems and mechanisms of cortisol, progesterone, testosterone, DHEA, melanin and melatonin, for example, were particularly important and highly relevant. In fact, there were numerous indications that animals, like humans, react to stress and environmental factors that go far beyond the obvious physical stresses (see the abstract on the HPA axis from study P79 Men`s H.E.A.L 360 Underwear).

Direct impact of the stressors on the test subjects

The hypothalamic-pituitary-adrenal axis (HPA axis) is the central mechanism by which the body reacts to stress. This current project shows that chronic or unconscious stress in animals leads to an overstimulation of this axis, which in the long term increases the release of cortisol. A sustained increase in cortisol not only leads to systemic inflammation, but also weakens the immune system and impairs digestion, which can result in symptoms such as skin diseases or gastrointestinal problems in animals.

Animals, especially pets such as dogs, which are closely connected to the habitat of their owners, are exposed to the same electromagnetic pollution as humans. This includes Wi-Fi, mobile phone radiation and electrical devices, as well as mobile phone masts, smart meters, LED lighting and much more. Extensive studies (including our own previous studies) have



confirmed that electromagnetic interference fields (EMSF) disrupt cell communication and promote oxidative and nitrosative stress. In sensitive animals, this in turn leads to a lack of melanin and melatonin. This in turn often manifests itself in symptoms such as restlessness, sleep disorders or an increased susceptibility to diseases (renal insufficiency, lung, intestinal, liver stress, etc.).

The role of melanin and melatonin in the stress response

In addition to its role as a pigment, melanin in particular also has bioenergy-informative properties that enable the organism to perceive its environment accordingly and that can help to absorb EMSF, among other things, and protect the body from their effects. As can be seen from the present project, a well-regulated melanin system can therefore increase tolerance to such stressors. A weakened melanin system, on the other hand, is a major cause of electrosensitivity.

Melatonin, on the other hand, is primarily produced by the pineal gland. On the one hand, it is crucial for the sleep-wake rhythm, on the other hand, it also has antioxidant and anti-inflammatory properties. Chronic stress and electromagnetic interference fields (EMSF) can impair melatonin production in the pineal gland, which in turn weakens the body's ability to regenerate.

This revealed another bridge to animal health

It was plausible for us within this Study and detail-project P75 4.0 and P75 4.1 on the animal study to scrutinise the combination of stress, electromagnetic stress and hormonal deregulation as playing a central role in the observed deregulations. As the project descriptions 1-5 show, the technology of the test object in the experimental group was able to achieve a potential harmonisation of the energy-informative systems compared to the control group by supporting the homeostasis of the HPA axis and consequently the regulation of the hormone structures addressed, particularly melanin and melatonin, as well as general cell communication.

The current results confirm that the quantum technology of the test object enables sustainable physiological and energy-informative regulation in dogs on the one hand and also reduces psychosomatic stress on the other.

The aim of this study was to emphasise the importance of a holistic approach that integrates physical, emotional and energy-informative aspects in order to effectively address chronic stress in animals.

The research perspective here was generally focussed on the extent to which the quantum technology of the test object is able to provide measurable relief for these systems through targeted application.

General information on the test result

Humans, like all biological objects (including animals and plants), are a kind of receiving antenna for environmental information. This is because life, especially that of humans, animals and plants, is fundamentally and exclusively dependent on environmental information. Our organism is biologically very sensitive where natural information (fields) is



located or where this natural information is subject to interactions and fluctuations. The situation is all the more dangerous when such fields of constructive structures are disturbed by various environmental stresses.

For this reason, detected informative electromagnetic interference fields are biologically highly relevant. Any reduction or conversion of these interference fields (ideally to 100 per cent) is biologically very important, in some cases even vital. These information burdens from our primarily artificial environment are only compatible with life if they can be adapted to a natural fluctuation tolerance. Disturbances, problems, blockages and disharmonies in the biological control circuit of biological objects, especially in animals, are caused by such disruptive information influences.

Neutralising or harmonising effects were demonstrated in this project P75 4.0.1 to determine the effect of the test object, the "Quantum Upgrade" on animals. The "Quantum Upgrade" was able to neutralise the biologically detrimental effects and impacts of the stress factors tested on the animal test subjects.

The significant ability of the test object to neutralise and harmonise the stress factors tested in this project P75 4.0.1 is hereby demonstrated. The transformation of the tested information into bioenergy information with biological and life-promoting quality is proven with this project.

A brief statement in relation to the questions posed before the start of the project:

Question 1: Could the pathogen-morphological developments, which were observed in the BEFORE microscopies of the live vital blood of the test subjects (dogs), improve under the influence of the test object (test subjects of the experimental group) in the AFTER microscopies?

Answer: In the respective observation period of about 4 weeks, a significant improvement in blood morphology in terms of bacterial cyclogeny was observed in all subjects of the experimental group. This is indicated by the images and videos of the microscopies as well as the BESA tests carried out in sub-study P75 4.0.1.

The disintegration process caused by haemolysing erythrocytes and that of white blood cells was also reduced. The other blood parameters listed also confirm a positive influence of the field of the test object. The comparison with the control group in particular confirms the regulatory influence of the test object.

Question 2: Was the effect of the quantum field from the 'test object' able to harmonise or improve a blood situation that was detrimental to the health of the dogs (test subjects) via the process of quantum entanglement?

Answer: Yes

Question 3: What altered behaviour could be observed in the immune system, especially in the red and white blood cells (e.g. erythrocytes, leukocytes, monocytes, lymphocytes, thrombocytes, etc.)?

Answer: The red and white blood cells showed a regular development with no parasitic infestation, in extreme cases a very limited parasitic infestation. In any case, the relationship between the pet owner and the dog is a determining factor.



Question 4: In what way could the environment be adapted through the influence of the test object?

Answer: Especially or particularly in the area of the blood environment, clear changes in the direction of a life-friendly environment in the sense of bacterial cyclogeny could be determined by using the test object (experimental group) (see comparison of experimental group and control group).

Question 5: Is it the environment that undergoes regeneration due to the influence of the test object and thus influences certain pathogenic and apathogenic blood components?

Answer: Yes, from the observation of the image material and subjective determination via BESA, it can be assumed that the most lasting changes are seen in the environment. Ultimately, it is the environment that causes changes in the morphological blood structures in the sense of bacterial cyclogeny.

Question 6: What conclusions can be drawn from the application and the already proven effect of the test object on the situation of the animal stress factors?

Answer: The current environmental pollution (electromagnetic interference fields, heavy metals and toxic substances in nature, meadows and water, etc.) shows that a permanent use of the test object would also be necessary for dogs.

The significant ability of the test object to neutralise and harmonise or reverse the bacterial cyclogeny of the stress factors tested in this project P75 4.0.1 is hereby demonstrated or proven with this project.

Authorized Summary

The BESA tests carried out by IFVBESA on the energetic and physical effectiveness of the test object have clearly shown that this test object is able to neutralise or harmonise biologically significant stress factors at the acupuncture points of the test subjects. Using bioenergy-informative system analysis, the effect of the above-mentioned stress factors on the animal test subjects, their meridian systems and their energy-informative biological control circuits was scrutinised and systemically tested at the energy-informative level. The BESA tests BEFORE - AFTER show significant changes at the tested acupuncture points on the meridian system of the test person (animals). The measurement data and their key figures impressively confirm, on the one hand, the stresses caused by the tested factors on the human organism and, on the other hand, illustrate how the deregulating energies are transformed into biocompatible energies inherent in the body after the test object has been applied.

From a holistic perspective, it can be assumed that the positive effect on the test subjects - animals - also occurs in other animals. The BESA BEFORE-AFTER comparison with 30 different dogs (test subjects) clearly shows that the positive influence of the test object is actually possible with high precision. All measured values improved significantly from the mostly 100 per cent blue measuring range to the green, mostly 50 sct range (sct = scale value), i.e. the range of optimal measured values. This means:



Optimal regulatory dynamics have taken place. In terms of the IFVBESA, we can clearly speak of an optimal, significant improvement in the body's own energy situation.

Result

In the BESA AFTER test, the test subjects - animals were each brought into contact with the test object. In contrast to the BESA BEFORE tests, in which the test object was not used, consistently positive measurement results were recorded, indicating that neutralisation or harmonisation had taken place. The regulatory dynamics developed into an optimal effective range.

By demonstrating the energy-informative effectiveness of the "Quantum Upgrade" as a test object to the test subjects - dogs (1-6) in this project P75 4.0.1, the requirements for obtaining a BESA seal of approval from the International Association for BESA were fulfilled.