

The Effect of the Quantum Field in the Travel Bloc on the Body's Regenerative Competence

Pilot Study

Research Project Overview

This pilot study, conducted by the naturopathic clinic Ruth Knauss and commissioned by Leela Quantum Tech LLC, aimed to explore the effects of the Leela Quantum Travel Bloc on the body's regenerative competence. The primary objectives were to determine the influence of the quantum field in the Travel Bloc on patients with various conditions and to evaluate the strength of this effect. The study included subjects with chronic iron deficiency anemia, pulmonary emphysema, swallowing disorder, and Helicobacter infection. Results showed significant improvements in the physiological conditions, regulatory functions, and energy supply of the subjects, as indicated by the comparative analysis of pre- and post-exposure scans.

Research Questions

1. What influence does the quantum field in the Travel Bloc have on patients in terms of enhancing the body's regenerative capacity?
2. How strong is the effect of the quantum field?

What is the Leela Travel Bloc and What Does It Help With?

Travel & Car Bloc is a quantum energy generator designed to charge anything with pure, dynamic quantum energy. Between the plates of the Travel Bloc is a concentrated quantum energy space. Everything exposed to the influence of this field experiences an organizing and harmonizing effect. This applies to all types of matter as well as to biological systems, such as humans, animals, and plants.

Quantum energy is the deepest energy level where all energy frequencies exist. The information in quantum energy corresponds to the original order of the universe. Quantum energy is contained in everything, although not usually in a concentrated form.

Highly concentrated quantum energy has the property of moving everything that comes into contact with such a quantum space to its optimal or original potential, or at least inviting it to return to this original potential.

Methodology of the Applied Procedure

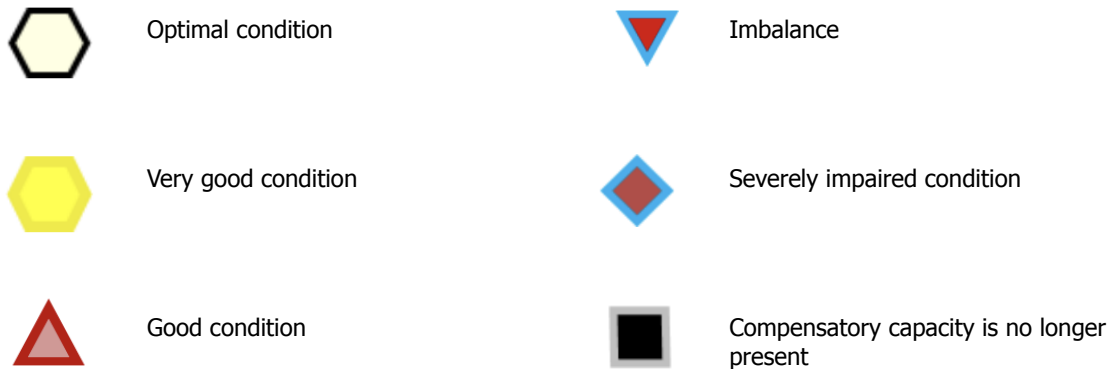
The Metavital Human device, grounded in principles of biophysics and quantum medicine, was used for diagnostic purposes. Electromagnetic energy fields, which are integral to biophysical processes, regulate metabolic functions within the body in conjunction with biochemical mechanisms. During instances of condition and physiological imbalances, biophysical alterations manifest within the body. The Metavital Human device facilitates the measurement of these changes in the organism and serves both diagnostic and therapeutic purposes in addressing diseases. Within this study, biophysical disruption patterns associated with food intolerances were assessed in patients using the Metavital Human device. In this study, the Metavital Human was used to diagnose the biophysical disturbance patterns in patients with various diseases. The affected parts of the body of the test subjects were scanned before and after contact with the Travel Bloc, and an analysis was conducted each time.

Test Procedure

The subject is connected to the Metavital device, and an initial scan of the body is performed. The condition of the subject is visible in a computer-generated graphic. After the scan, the subject is disconnected from the device, and their hand is placed in the Travel Bloc for approximately 4 minutes. The subject is then reconnected to the device, and another scan is performed. A comparative analysis of the "before and after" scans makes the influence of the quantum field in the Travel Bloc on the subject visible.

Symbol Description on the Test Images

Die Graphiken, die im Metavital Human Gerät angezeigt werden, sind Darstellungen verschiedenen Bereiche bzw. Ebenen des Körpers, wie Organe, Gewebe, Zellen und DNA. Die Symbole auf den Abbildungen zeigen in sechs Stufen den Grad des gesunden bzw. des pathogenen Zustandes des Körpers an. Nach dem Einfluss des Quantenraumes im Travel Bloc verdeutlichen die veränderten Symbole das Kompensationsvermögen und die Regeneration des Körpers.



Subjects

1. Subject 1: 38 years old, Chronic Iron Deficiency Anemia

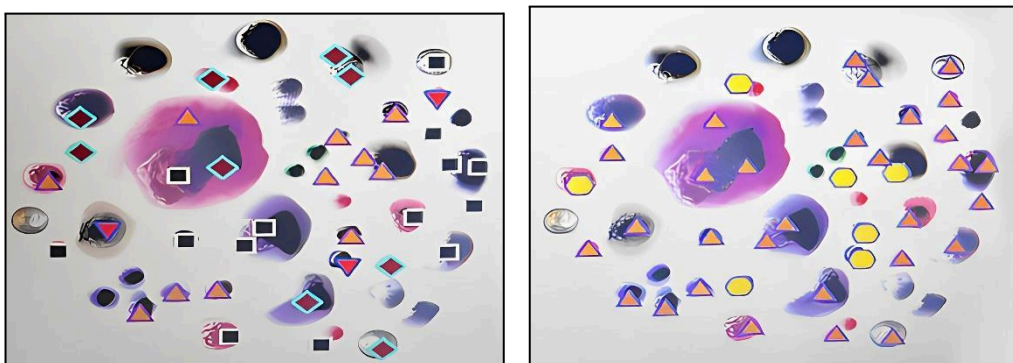


Image Description:

Stem cells in the collarbone, histological section, **before (left graphic)** and **after (right graphic)** the influence of the quantum field in the Travel Bloc on the subject. **The right graphic shows an 87% increase in the body's compensatory response.**

Discussion of the Result:

Anemia (blood deficiency) arises from the impaired formation of erythrocytes (red blood cells). This can have various causes; in this case, it is due to an iron deficiency and a partial reduction of blood-forming stem cells in the bone marrow.

Left Graphic: Shows the condition of a person with chronic iron deficiency anemia, visible from downward-pointing triangles (good condition) to black squares (compensatory capacity of the body no longer present).

Right Graphic: After the influence of the quantum field in the Travel Bloc, **the pathological focus has significantly decreased, visible from the yellow hexagons and red triangles (very good to good condition).**

2. Subject 2: 59 years old, Pulmonary Emphysema

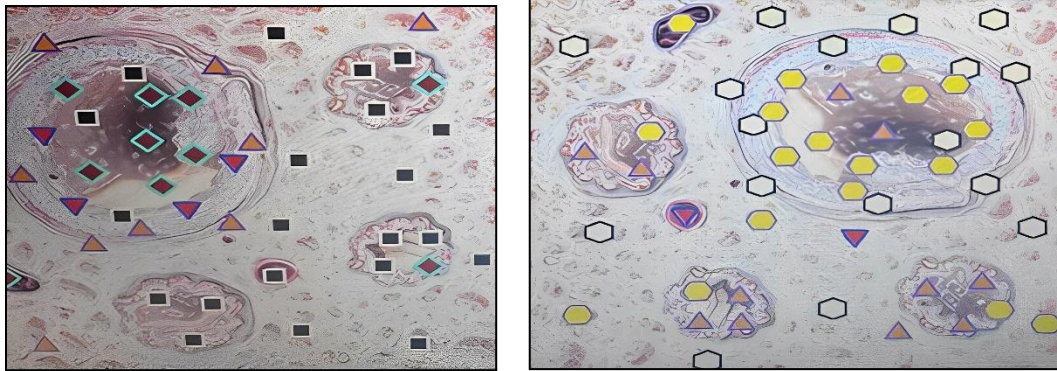


Image Description:

Lower lobe of the left lung, histological section, **before (left graphic)** and **after (right graphic)** the influence of the Travel Bloc on the subject. **The right graphic shows an 89% increase in the body's compensatory response.**

Discussion of the Result:

Pulmonary emphysema is a chronic progressive lung disease where the alveoli at the end of the bronchioles are enlarged and destroyed.

Left Graphic: It becomes evident that the lung tissue is struggling with significant imbalance, illustrated by the larger number of black squares and downward-pointing triangles.

Right Graphic: After the influence of the quantum field in the Travel Bloc on the organism of the tested person, the physiological condition and regulatory capacity have significantly increased, indicated by the predominance of yellow and white hexagons.

3. Subject 3: 64 years old, Swallowing Disorder

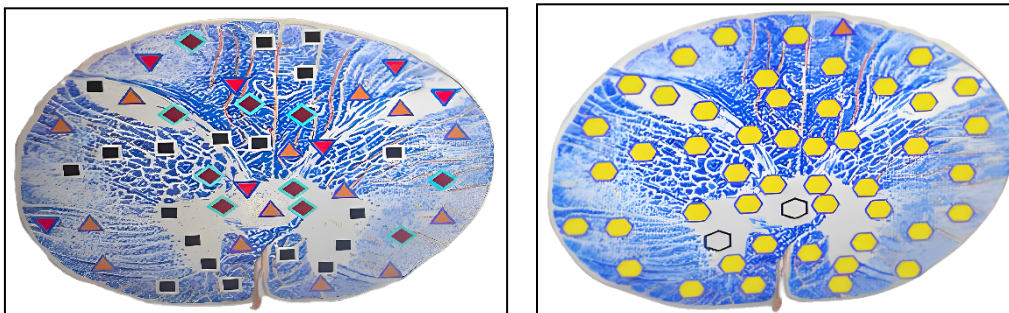


Image Description:

Lower lobe of the left lung, histological section, **before (left graphic)** and **after (right graphic)** the influence of the Travel Bloc on the subject. **The right graphic shows an 89% increase in the body's compensatory response.**

Discussion of the Result:

Pulmonary emphysema is a chronic progressive lung disease where the alveoli at the end of the bronchioles are enlarged and destroyed.

Left Graphic: It becomes evident that the lung tissue is struggling with significant imbalance, illustrated by the larger number of black squares and downward-pointing triangles.

Right Graphic: After the influence of the quantum field in the Travel Bloc on the organism of the tested person, **the physiological condition and regulatory capacity have significantly increased, indicated by the predominance of yellow and white hexagons.**

4. Subject 3: 50 years old, Infection with Helicobacter

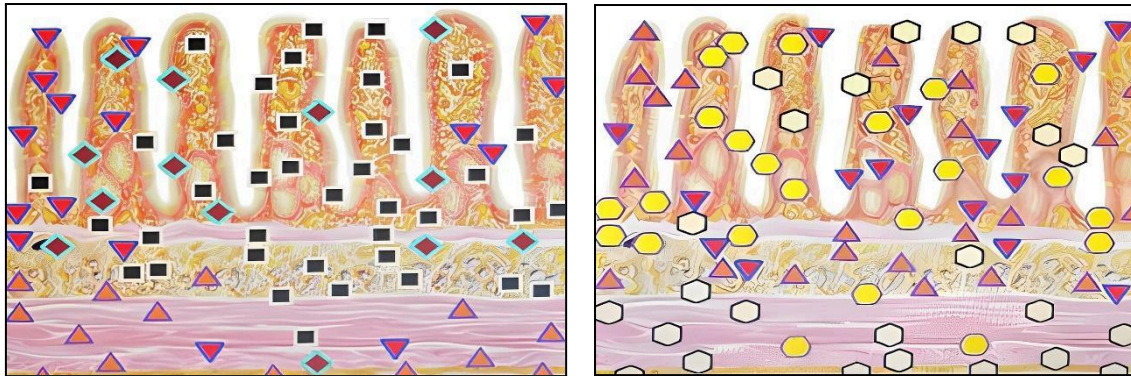


Image Description:

Intestinal villi in the upper part of the duodenum, histological section, **before (left graphic)** and **after (right graphic)** the influence of the Travel Bloc on the subject. **The right graphic shows an 87% increase in the body's compensatory response.**

Discussion of the Result:

Colonization of the stomach with the bacterium *Helicobacter pylori* can induce inflammation of the gastric mucosa. Consequently, the duodenum can also be affected.

Left Graphic: It becomes clear that the duodenum is severely affected, as indicated by the predominantly black squares.

Right Graphic: Here, too, **the quantum field has led to a significant improvement**, indicated by the yellow and white hexagons, extending even to the deeper layers of the intestinal mucosa. **The physiological condition and regulatory function in the organism have significantly improved.**

Summary

The study shows that the quantum field in the Travel Bloc has stimulated significant improvement in the body of the subject in each of the tests conducted. Four minutes under the influence of the Travel Bloc are sufficient to enhance the self-healing powers such that the physiological condition, regulatory function, and energetic supply are returned to a greatly improved state.

This pilot study does not yet allow for fully representative conclusions. However, the results indicate a clear trend suggesting that significant optimization of the body's self-healing abilities can be achieved through exposure to a quantum field.

Investigator

Mirga Ulrike Stock, Diploma Biologist, Department of Microbiology, Naturopath with practice since 1986
Areas of Focus: Bioresonance Therapy, Energy Medicine, Detoxification of Modern Pollutants, Consultation.