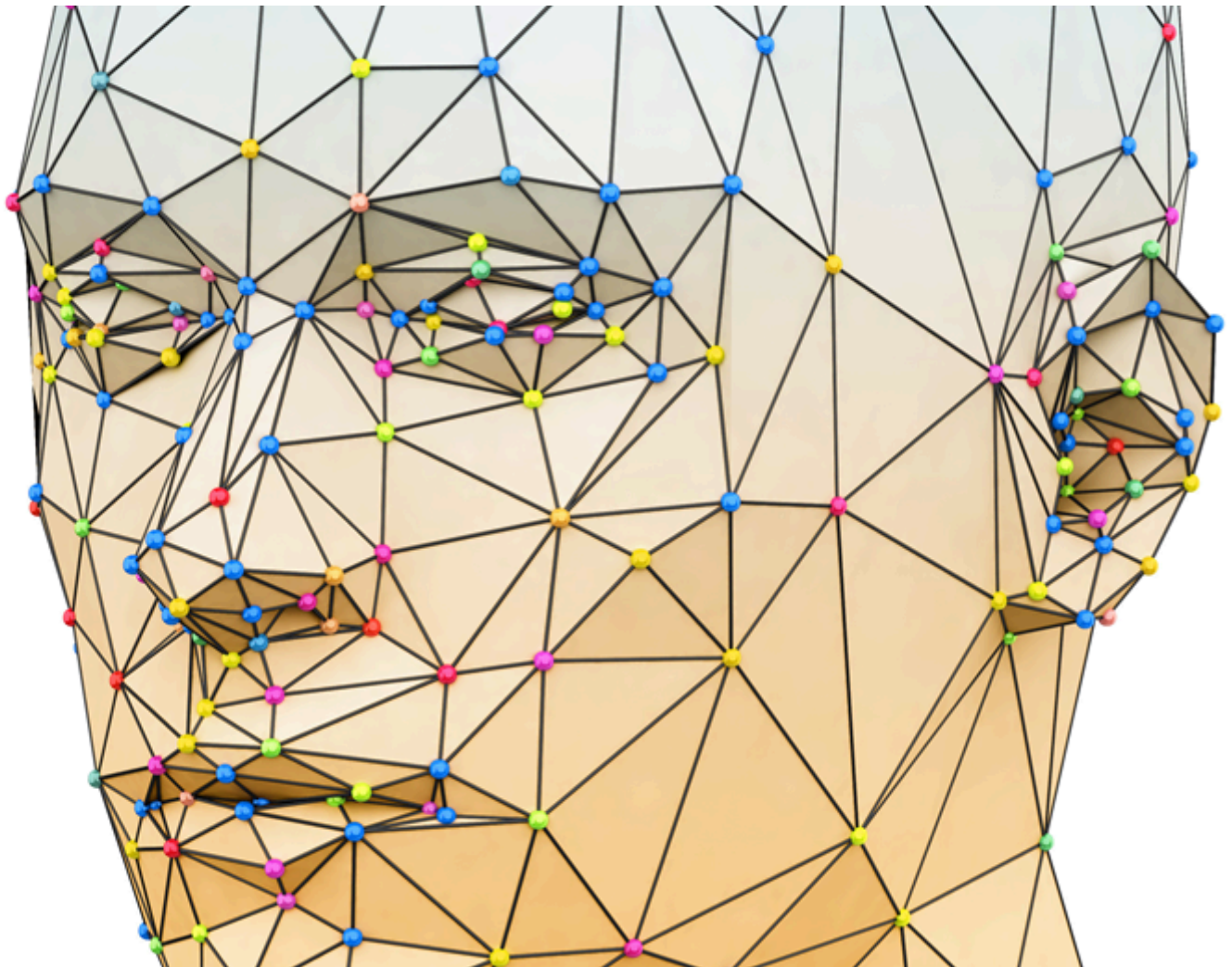




Internationaler Fachverband für BESA ■ ZVR Nr. 975047937  
Hauptstraße 1, A 4861 Kammer-Schörfling am Attersee ■ Österreich - AUSTRIA  
Tel.: 0043 - (0)664-73152899 | E-MAIL: [info@ifvbesa.at](mailto:info@ifvbesa.at)  
Website: [www.ifvbesa.at](http://www.ifvbesa.at) oder [www.besa-guetesiegel.com](http://www.besa-guetesiegel.com)

# IFVESA

## Information is crucial



# P77 2.2 BESA-Detailproject

## Pain Reconciliation Frequency

### Leela Quantum Tech, LLC



Internationaler Fachverband für BESA ■ ZVR Nr. 975047937  
Hauptstraße 1, A 4861 Kammer-Schörfling am Attersee ■ Österreich - AUSTRIA  
Tel.: 0043 - (0)664-73152899 | E-MAIL: [info@ifvbesa.at](mailto:info@ifvbesa.at)  
Website: [www.ifvbesa.at](http://www.ifvbesa.at) oder [www.besa-guetesiegel.com](http://www.besa-guetesiegel.com)

## **Project P77 2.2**

### **Experimental group**

Bioenergy-informative system analysis  
in the context of a BESA seal of approval  
on the effectiveness of the product  
“Pain Reconciliation Frequency”  
on different test subjects



## Client

company Leela Quantum Tech, LLC  
Attn: Eleonora Goldenberg  
1421 LUISA STREET, STE G  
SANTA FEE, NM 87505  
USA

## Project participants:

**Project management:** Wolfgang Hans Albrecht, President of the International BESA Association

**Test Person:** Eva Schmidt, Vicepresidentin of the International BESA Association

**Test subjects:** A total of 24 subjects in an exploratory research project, which is double-blind, randomized and partly quantum-entangled. The P77 2.0 project consists of 4 detailed projects from P77 2.1 to P77 2.4.

**P77 2.1:** 6 subjects from P1 to P6

**P77 2.2:** **6 subjects from P7 to P12**

**P77 2.3:** 6 subjects from P13 to P18

**P77 2.4:** 6 subjects from P19 to P24

**Projektlocation:** At the headquarters of the International Association of BESA  
Main street 1  
A 4861 Kammer/Schörfling am Attersee - AUSTRIA

**Date:** 01.05.2024 to 06.06.2024



**Projektduration:** 37 days

## Contents

BESA- legend for interpreting the BESA measurement results	5
Basics of the research project P77 2.2	6
Projekt - Design:	7
Proband	8
Research support services of the IFVBESA-BESA reference tests	9
Research project description	10
Test procedure	12
All BESA tests at a glance	49
General information on the test result	50
Autorized Summary	50

### Importend notes:

The client has the right to utilize this project report. Irrespective of this, this report is the intellectual property of IFVBESA as the contractor. The contractor is entitled to use this project report for other purposes, provided that this does not violate the client's data protection or confidentiality.

On the other hand, the project report, with the exception of the “authorized abridged version”, may not be changed or abridged without the consent of IFVBESA.

The assignment for this project relates to bioenergetically measurable values and their interpretation in accordance with the guidelines of BESA and the IFVBESA.

Maintaining the quality of the tested products and their regular monitoring is the task and responsibility of the client.



Investigation of the manufacture, mechanism of action or interpretation of the client's products vis-à-vis third parties is not the responsibility or task of the contractor. Video recordings may only be made with the permission of IFVBESA.

## BESA- legend for interpreting the BESA measurement results

The measured value of 50 at the tested meridian represents an optimal energetic state in this organ or its higher levels. Also measured values in the range of 50 to max. 70 still count as a neutral and balanced energetic status. The organism is able to regulate irritations of the system (wrong environmental signals) very well.

Measured values above 70 to 100 represent the inflammatory range or a so-called energy surplus as a reaction to the irritations of the system by corresponding environmental signals. After reaching the maximum values, the energy state tips into the degenerative (blue) range.

Measured values from below 50 to around 0 represent the so-called degenerative measuring range or a lack of energy as a reaction to the stimulation of the system by corresponding environmental signals.

Measured values represented by a so-called pointer drop of more than 3 scale lines indicate total deregulation. The influence of certain environmental signals then leads to such strong system overloads, which can only be harmonized by corresponding new signals.

The orange measured values represent a resonance of the tested substances (electronic honeycomb contents) in the respective called bioenergy-informative control circuits as well as in its subordinate or superordinate structures.

### BESA key figures:

<b>up 0,79</b>	very deep energetic regulation disorder (SSD) energy deficiency
<b>0,8 to 1,19</b>	strong energetic regulation disorder (SD) degeneration/lack of energy
<b>1,2 to 1,59</b>	energetic regulation disorder (D) degeneration/energy deficiency
<b>1,6 to 1,99</b>	degenerative transition (DÜ)
<b>2,0 to 2,39</b>	optimale regulation (OR)
<b>2,4 to 2,79</b>	in the regulation (R)
<b>2,8 to 3,19</b>	partial inflammation = regional energy excess (PE)
<b>from 3,2</b>	total inflammation = strong general energy surplus (TE)



## Basics of the research project P77 2.2

Analysis was commissioned by the company Leela Quantum Tech, LLC to test the effect of the test object, the “Pain Reconciliation Frequency” using bioenergy informative systems analysis (BESA) on the relevant test subjects and to demonstrate its effect on the test subjects.

The test was carried out independently of the subjective perception of all test subjects. The “Leela Quantum Reconciliation Management Frequency Map” was presented as follows, according to the information provided by the contracting company:

### **Description of the mode of action of the test object “Pain Reconciliation Frequency” by the client:**

Description of the mode of action of the test object “Pain Reconciliation Frequency” by the client:

The Leela Quantum Frequency Cards fit comfortably in your pocket or purse. They are charged with powerful, positive frequencies. By working with world-renowned healers, we can exclusively offer you the purest and most effective frequencies for a wide range of needs. Whether you are looking for cleansing, balancing or manifestation, our frequency cards offer unlimited possibilities.

The modern world exposes us to numerous environmental influences that can tire our bodies and minds. We can hardly escape these influences. They are in the air, in the water and in our food. Electrosmog is also omnipresent in our everyday lives. It is therefore all the more important to support the body and mind in maintaining balance and to harmonize and neutralize negative influences, frequencies and radiation. At LeelaQ, it is our goal and concern that you can fully develop your natural strength independently of these influences and build up a positive energy field in order to feel good all round and permanently.

Throughout the day, every minute, you will experience vitalizing quantum energy and supportive, positive frequencies through our products, which strengthen your performance and bring peace to your thoughts.

This is exactly what the “Pain Reconciliation Frequency” does to a high degree.

The technology of the “Pain Reconciliation Frequency” is a tool that generates a concentrated, informative frequency field on the physical, mental and spiritual levels, thereby triggering effective processes on all levels.

This field is therefore able to bring the primal information into balance in terms of energy-information, i.e. to restore the primal vibration (primal frequency - primal characters). According to researchers, these frequencies are among the most innovative developments in the field of natural health. This technology thus combines science and effective frequencies with the aim of delivering life-enhancing energy to the environment required and used by the organism.



## **Direct effect on the energy-informative field**

The concept of the “Leela Quantum Reconciliation Management Frequency ‘Card’” is therefore to open energy channels in order to harmonize or neutralize the dissolution of spasmodic states (pain symptoms) and the associated disturbances or disharmonies in the human energy-informative field and thus to replace negative or blocking and deregulating (spasmodic) states on the physical level with positive states. Due to the way it works, the “Pain Reconciliation Frequency” has a valuable and effective area of application.

## **Projekt - Design:**

This project is an explorative study in which the harmonizing effect of the test object, the “Pain Reconciliation Frequency”, on test subjects is investigated. The design of this project contains modern, quantum-physical elements and creates new standards in the field of research into quantum-technological products and their modes of action.

### **The explorative research approach of the IFVBESA**

New knowledge, new insights and new ideas are the breeding ground on which science and the technologies of the future thrive. The explorative approach of most of our research projects is the seed for the information medicine or quantum technology of tomorrow. In exploratory study design, we present a methodical research approach in which research areas or research questions are investigated that have not yet been investigated. This demonstrates both the development and the potential of novel approaches for research into future technologies.

The concrete and feasible application reference of the international professional association for BESA reduces the otherwise high research risk that often prevents companies and research institutes from dealing with topics at a very early stage of development.

This project is double-blind, randomized and partly quantum-entangled.

Double-blind means that neither the subject nor the tester knows who will be confronted with the test object and who with the placebo. This is only possible through random group allocation (randomization). The aim of blinding is to evaluate the results as objectively as possible.

### **Quantum entanglement:**

Quantum entanglement is a quantum mechanical phenomenon. Two or more entangled particles can no longer be described as individual particles with defined states, but only the overall system as such.

In the current case, this means that the photographs used form an indelible, energy-informative image of the representation in the photograph (i.e. an energy-informative space). In other words, in relation to this project, one can say that the energy information contained in the photographs represents a real extract from the quantum



field. The photographs were tested and evaluated in the IFVBESA laboratory using a surrogate BESA.

This means that all subsequent BESA tests of the project, which are recorded by means of photographs, subsequently take place under the IFVBESA laboratory conditions already mentioned above.

**What does surrogate mean:** This is a substitute person who stands in for the respective test person in the case of a quantum entangled BESA test or application of the test object.

### **Placebo (empty object)**

In this case, unlike the test object, the placebo is an empty object that does not contain any effective frequencies. The test object cannot be distinguished from the empty object (placebo) either for the test subjects or for the test persons.

## **Proband**

### **Proband in general:**

In addition to the test object already described, 24 test subjects form the framework for this research project. Additional test subjects will be integrated in parallel as substitutes for possible unexpected absences.

The test subjects were informed in advance of this project about the general procedures for this project and their function as test subjects.

General means that neither the subjects nor the test persons know what the background of the series of measurements is. The aim of this type of blinding is to obtain as objective an evaluation of the results as possible in order to rule out so-called placebo effects.

The test subjects are anonymously assigned a number from P1 to P24. The test subjects are also assigned anonymously to either the control group or the experimental group.

The different appointments made with the test subjects for the BESA tests can lead to the numbers of the test subjects from P1 to P24 appearing differently in both the experimental group and the control group. For this reason, in the statistical analysis, the numbers of subjects P1 to P24 are additionally numbered from 1 to 24 (list of the experimental group and the control group)

For those test subjects who did not have the opportunity to take part in the BESA tests live during the scheduled time period, photos were taken for the quantum entangled BESA tests. The photos were printed on high-quality photo paper, which is necessary for this form of BESA testing. These test subjects are also included in the statistics with QV (quantum entangled).

The BESA tests are carried out for each test person as follows:

1. at the beginning of the project to establish a so-called status (actual situation).





2. in the 2nd part of the project after several minutes of exposure to the test object or the blank object (placebo).

### **Brief description of the participating subjects:**

#### **Experimental group**

Proband 1 P9	66 years, female, no CI, various minor stress factors
Proband 2 P23	62 years, female, no CI, various minor stress factors
Proband 3 P21	29 years, male, no CI, no conscious stress factors
Proband 4 P15	25 years, female, no CI, no conscious stress factors
Proband 5 P8	37 years, male, no CI, no conscious stress factors
Proband 6 P7	64 years, female, no CI, various minor stress factors, inner restlessness
Proband 7 P5	62 years, female, no CI, various minor stress factors
Proband 8 P1	59 years old, female, no CI, feels drained of energy, sleeps restlessly, inner nervousness
Proband 9 P17	QV 5 years, male, no CI, restless, sometimes aggressive
Proband 10 4	QV 76 years, male, CI, severe pain all over body, dizziness
Proband 11 P19	64 years, female, CI, fluid retention in both legs, dizziness, tachycardia
Proband 12 P24	61 years, male, no CI, various minor stress factor

#### **Control group**

Proband P13	P16 60 years, male, CI, severely enlarged prostate
Proband P14	P10 58, female, no CI, various minor stress factors
Proband P15	P3 54 years, female, no CI, mental disorders, feels lack of energy
Proband P16	P6 69 years, male, no CI, diabetes 2, retinal vein occlusion right eye blind, facial nerve palsy right, gastric perforation
Proband P17	P22 39 years, male, CI, sometimes lacking energy, stress
Proband P18	P11 21 years, female, CI, feels lack of energy, slightly overweight
Proband P19	P12 QV 18 months, female, no CI, restless sleep
Proband P20	P13 QV 70 years, male, no CI, gastrointestinal complaints, digestive problems, rheumatism
Proband P21	P14 QV 79 years, female, CI, mental disorders, lack of energy
Proband P22	P20 65 years, female, no CI, no known stress factors
Proband P23	P2 61 years, female, no CI, various minor stress factors
Proband P24	P18 56 years, female, no CI, various minor stress factors



## Research support services of the IFVBESA-BESA reference tests

The P77 2.0 research project is specifically concerned with demonstrating the effect of the test object on various stress factors and pain and health-related deregulations of the participating test subjects.

The aim is to check whether the test object can neutralize the possibly negative representations from the VORHER BESA tests or the perception of the stress factors or their possibly perceived disruptive effect on the organism.

The client assumes that by using the test object, the stress factors mentioned by the test persons or the deregulations in the energy-informative system made visible by BESA can be harmonized in an energy-informative and biological way and their vibrations can be transformed into positive, life-promoting vibrations. The test object should therefore be practically and factually suitable for bringing the possibly tested deficiency states of the test subjects back into the physiological norm. This is being tested on the test subjects in this BESA project.

The test object is tested according to the client's requirements within the framework of the applicable IFVBESA conditions for awarding quality seals. Depending on the significance of the test results, seals of approval are awarded in 3 categories, taking into account all tests of a project.

The client and developer of the test object assumes that it is able to compensate for the causes of the stress factors and deregulations in the energy-informative system of the test subjects and to replace the associated negative states with positive states.

The following commissioned BESA tests on the test subjects are intended to determine whether the test object is capable of doing this.

## Research project description

### Research questions

1. does the energy-informative status, as analyzed in the BESA test, change after the test subjects are exposed to the test object live and partly quantum entangled over several minutes?
2. is the effect of the test object able to harmonize or improve a possibly deregulated, disadvantageous situation in the energy-informative system of the test subjects?

The purpose of the tests for this detailed research project P77 2.2 is to prove the functionality of the test object by test results that are to be achieved by bringing the test subjects into contact with the test object or blank object/placebo in BEFORE tests (initial value or status) and in AFTER tests.



- The BESA BEFORE tests are carried out without using the test object/blank object
- The BESA AFTER tests are carried out during the confrontation of the test subjects with the test object/blank object.

### **BESA 1 testing BEFORE as status**

The person responsible for the test carries out a basic BESA test on each test person. All BESA tests are carried out at the so-called TING points (40 acupuncture nail fold points on the fingers and toes).

**The aim** is always to create a basic test (status) for each test person as a representation of the overall energy-informative starting situation for all subsequent BESA tests in this detailed project.

**Result:** The measured values then indicate a corresponding behavior or image of the energy-informative system measured via the meridian end points (acupuncture points) and its subordinate levels such as organs or organ systems.

### **BESA 2 testing AFTER during the confrontation with the test object or the placebo**

In the further course of the BESA test, the test object (or the blank object/placebo - control group) is introduced into the measuring circuit and tested on the test person. The test object or blank object/placebo is thus in direct confrontation with the respective test person. All BESA tests are again carried out at the TING points (40 nail fold points on the fingers and toes) of the test subjects.

**The aim** for each subject is always to find out how the subject's energy-informative system reacts after confrontation with the test object or empty object/placebo in the measuring circle. What changes can be seen compared to the BESA 1 test BEFORE due to the influence of the test object or the empty object/placebo?

**Result:** The measurement results show a corresponding change in relation to the test object or the blank object/placebo. This can range from a possible deterioration to a significant improvement in the acupuncture points or the energy-informative state and the underlying levels such as the test person's organs.

**The question for the BESA AFTER tests is:** "Is the test object suitable and able to represent the perceived stressful effects from the energy-informative field of the test subjects in a regulation or to bring the recognized stresses from the BESA BEFORE tests into a regulative - harmonic state via the possible process of quantum entanglement?"

The appropriately designed tests should provide information on this by comparing the BEFORE tests without the test object with the test results of the BESA AFTER tests to be carried out using the test object or the empty object/placebo.

### **General information on the information transfer of the test object**



Information is transferred from the hyperspace of the test object to the hyperspace of biological objects (humans, animals, plants). From there, the information reaches the reference space or energy space via so-called interaction channels from the background field. This is an amalgamation of all organs and forms of energy in the biological object. The information of the program can be dynamically implemented there and thus change current states. The changes can manifest themselves in the form of neutralization or harmonization of disturbances, the resolution of problems, blockages and disharmonies.

### **Conditions:**

The BESA tests were carried out partly quantum entangled via the corresponding photographs and partly live in the IFVBESA premises under laboratory conditions, at room temperature 20°Celsius, on a natural wooden floor. Before the BESA Basic Status test, the test person is deswitched (made fit for testing) or the test possibilities are questioned.

### **Test procedure - procedure and specifications for implementation**

1. the BESA BEFORE tests on at least 24 test persons serve to determine the ACTUAL state - initial value (no exposure) of the test persons outside the frequency range of the test object or empty object/placebo. The results are determined exactly according to the specifications of the IFVBESA and documented using the corresponding graphs.
2. the BESA AFTER tests are carried out after at least 3 minutes of unconscious exposure to the frequencies of the test object (experimental group) or unconscious exposure to the blank object/placebo (control group). The procedure is as already mentioned in the research project description.

The aim of the development team is to determine whether the test object is suitable for harmonizing the deregulations resulting from toxic stress factors in the bioenergy-informative system of the test subjects, as noted in the product descripti.

## **Test procedure**

### **BESA 1 BASIC testing as bioenergy-informative status:**

In the first step, a bioenergy-informative basic test (bioenergy-informative status) is carried out at the meridian end points (TING points) of the test person.

### **BESA 2 Testing of the test object or the blank object/placebo against the test subjects**

In this BESA test, all test subjects are confronted with the test object (experimental group) or the blank object/placebo (control group).

Now the question is: How does the energy-informative system of the respective test person react within the effective range of the test object or empty object/placebo?



## Proband 7 P5 EG BESA 1 Testing-BEFORE

### BESA 1 Testing BASIC BEFORE as status

BESA test evaluation P77 2.1

from **23-05-2024 at 13:30 – 13:41** (11 minutes) Page 14 to 16

#### result:

The measured values indicated a very balanced picture of the energy-informative system measured via the meridian end points (acupuncture points).

**37 % in the blue area**

**62 % in the green area**

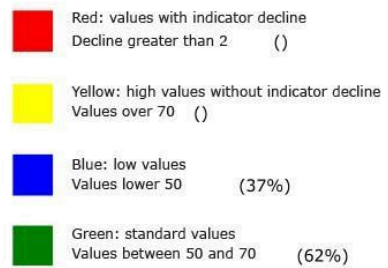
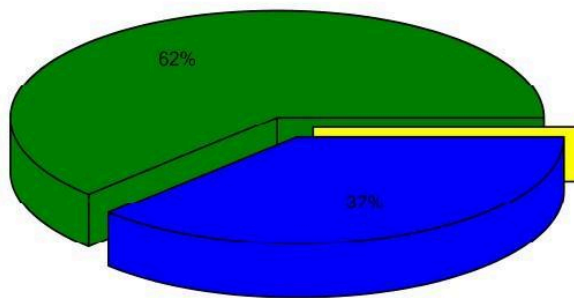
**1 % in the yellow transition area**

#### Conclusion:

As the BESA graphs and the pie chart show, 62% of the measurement results were in the green range and 37% were mostly only just in the blue range. This corresponds to a vital energy-informative general condition in relation to the levels of the organs tested.



## Overview of BESA measuring





## BESA basic test

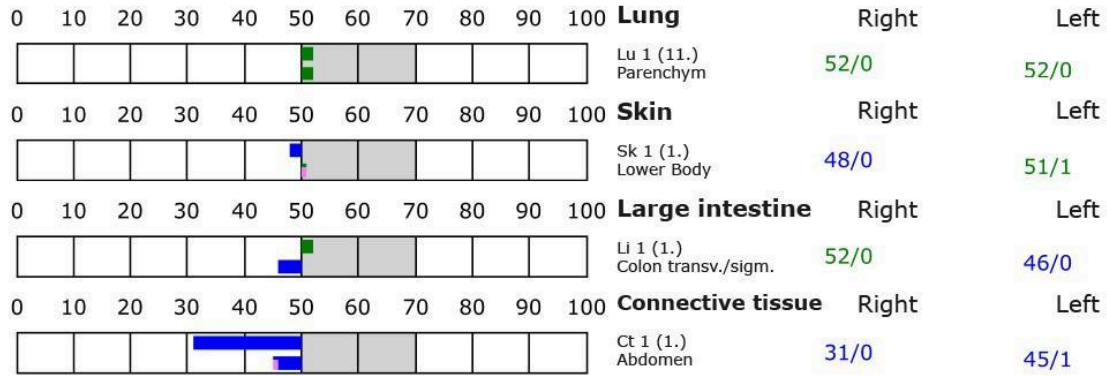
+++ : Indicator decline > 15 Skt.  
 ++ : Indicator decline 6-15 Skt.  
 + : Indicator decline 3-5 Skt.

T: Total inflammation (>89 Skt.)  
 P: Partial inflammation (70-89 Skt.)

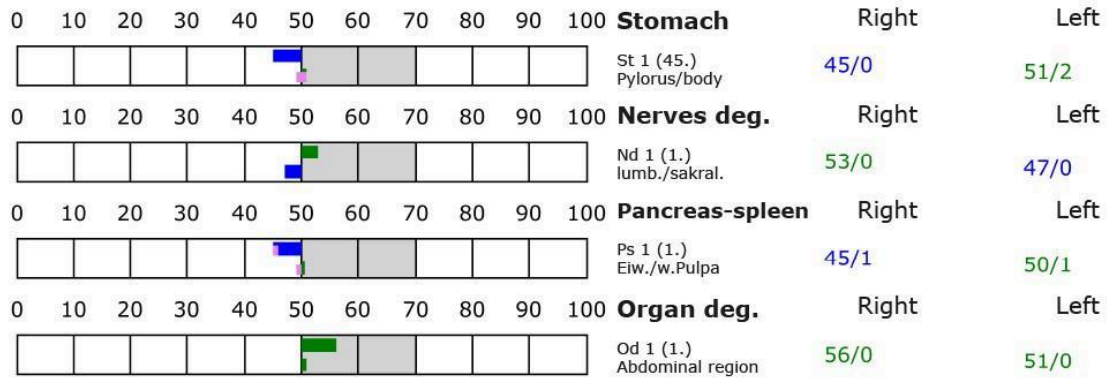
D: Degeneration (< 50 Skt.)

Standard values: (50-70 Skt.)

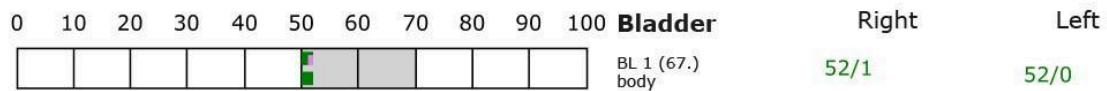
### Element: lu - sk - li - ct



### Element: st - nd - ps - od



### Element: bl - ly - ki - al





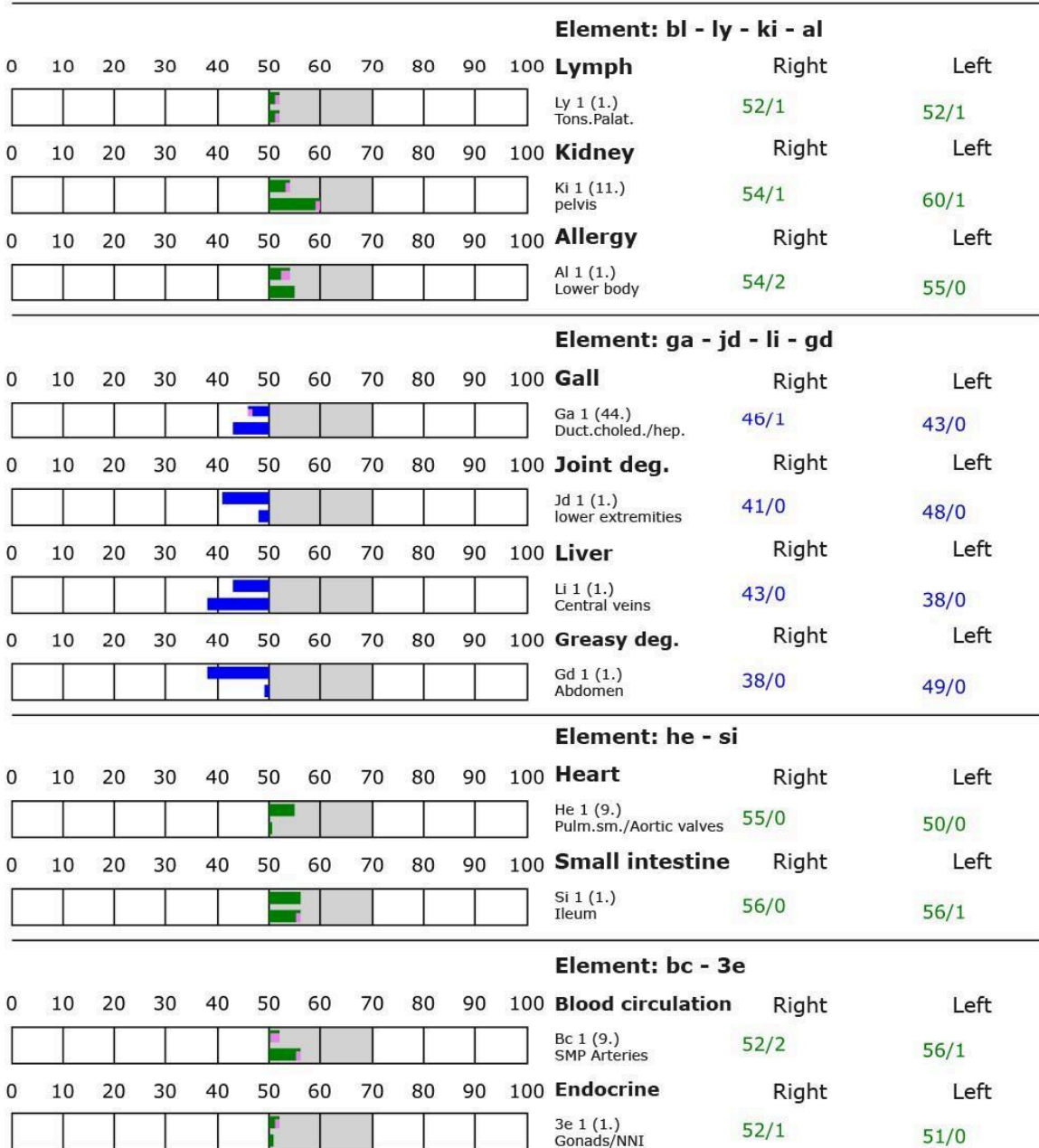
## BESA basic test

+++ : Indicator decline > 15 Skt.  
 ++ : Indicator decline 6-15 Skt.  
 + : Indicator decline 3-5 Skt.

T: Total inflammation (>89 Skt.)  
 P: Partial inflammation (70-89 Skt.)

D: Degeneration (< 50 Skt.)

Standard values: (50-70 Skt.)







## BESA 2 Testing AFTER

### **BESA 2 Testing AFTER during confrontation with the test object**

BESA test evaluation P77 2.1

from **23-05-2024 at 13:46 – 13:51** (5 minutes) Page 17 to 19

#### **result:**

The measurement result showed a clear and therefore significant improvement at all acupuncture points and in the energetic state of the test person.

**100 % in the green area**

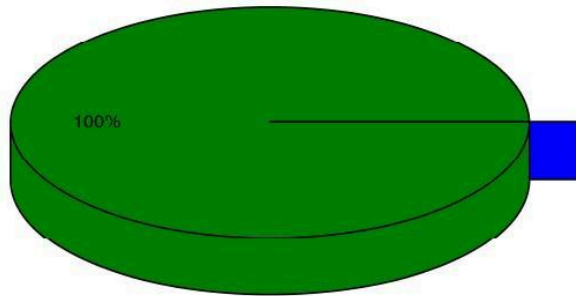
#### **Conclusion:**

As the following BESA graphs show, all measured values are in the green, optimal range.

The test object, which was tested on the test person on an energy-informative basis, clearly shows a harmonizing effect on the energy-informative field.



## Overview of BESA measuring



- Red: values with indicator decline  
Decline greater than 2 ( )
- Yellow: high values without indicator decline  
Values over 70 ( )
- Blue: low values  
Values lower 50 ( )
- Green: standard values  
Values between 50 and 70 (100%)

## BESA basic test

+++ : Indicator decline > 15 Skt.  
 ++ : Indicator decline 6-15 Skt.  
 + : Indicator decline 3-5 Skt.

T: Total inflammation (>89 Skt.)  
 P: Partial inflammation (70-89 Skt.)

D: Degeneration (< 50 Skt.)

Standard values: (50-70 Skt.)

### Element: lu - sk - li - ct

0	10	20	30	40	50	60	70	80	90	100	Element	Right	Left
											<b>Lung</b>		
											Lu 1 (11.) Parenchym	52/0	53/0
											<b>Skin</b>		
											Sk 1 (1.) Lower Body	52/1	53/1
											<b>Large intestine</b>		
											LI 1 (1.) Colon transv./sigm.	53/1	57/1
											<b>Connective tissue</b>		
											Ct 1 (1.) Abdomen	52/1	53/1

### Element: st - nd - ps - od

0	10	20	30	40	50	60	70	80	90	100	Element	Right	Left
											<b>Stomach</b>		
											St 1 (45.) Pylorus/body	52/1	53/0
											<b>Nerves deg.</b>		
											Nd 1 (1.) lumb./sakral.	52/1	56/1
											<b>Pancreas-spleen</b>		
											Ps 1 (1.) Eiw./w.Pulpa	50/0	57/2
											<b>Organ deg.</b>		
											Od 1 (1.) Abdominal region	58/1	53/0

### Element: bl - ly - ki - al

0	10	20	30	40	50	60	70	80	90	100	Element	Right	Left
											<b>Bladder</b>		
											BL 1 (67.) body	53/0	



## BESA basic test

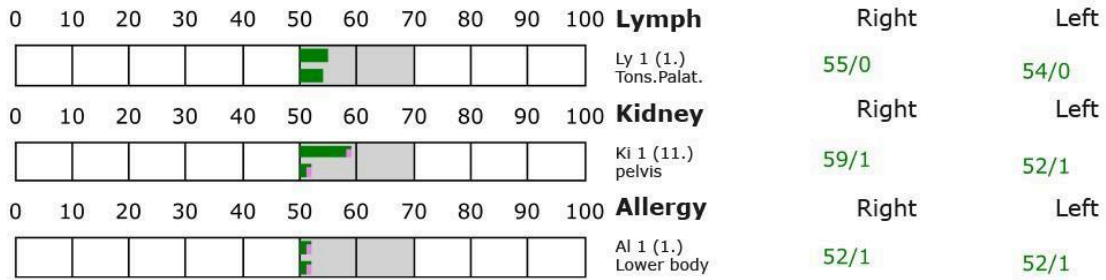
+++ : Indicator decline > 15 Skt.  
 ++ : Indicator decline 6-15 Skt.  
 + : Indicator decline 3-5 Skt.

T: Total inflammation (>89 Skt.)  
 P: Partial inflammation (70-89 Skt.)

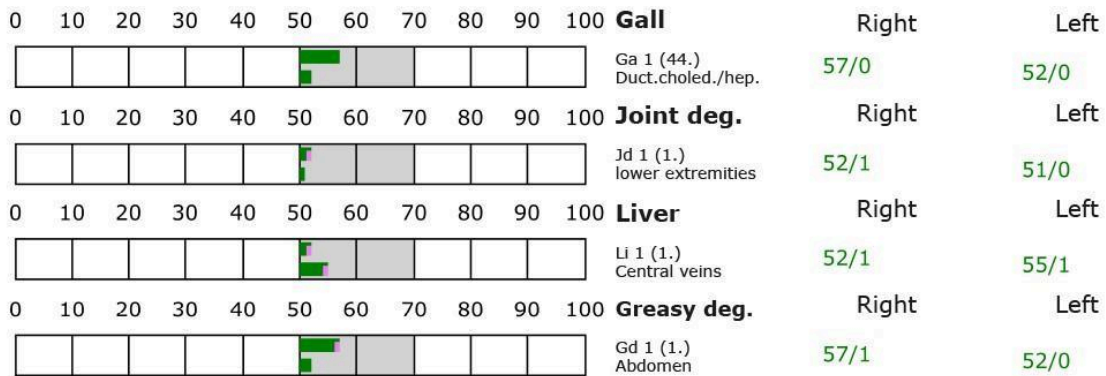
D: Degeneration (< 50 Skt.)

Standard values: (50-70 Skt.)

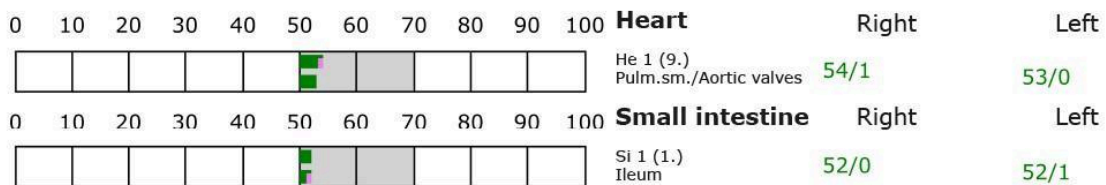
### Element: bl - ly - ki - al



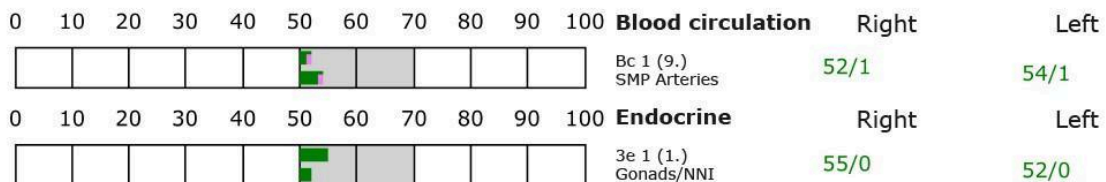
### Element: ga - jd - li - gd



### Element: he - si



### Element: bc - 3e





## Proband 8 P1 EG

### BESA 1 Testing BASIC-BEFORE

#### **BESA 1 Testing BASIC BEFORE as status**

BESA test evaluation P77 2.1  
from **30-05-2024 at 10:00 – 10:06** (6 minutes) Page 20 to 23

#### **result:**

The measured values indicated a strongly degenerative picture of the energy-informative system measured via the meridian end points (acupuncture points). The measured values on the subject's energy system indicate a highly stressful overall energy-informative situation.

**100 % in the blue area**

#### **Conclusion:**

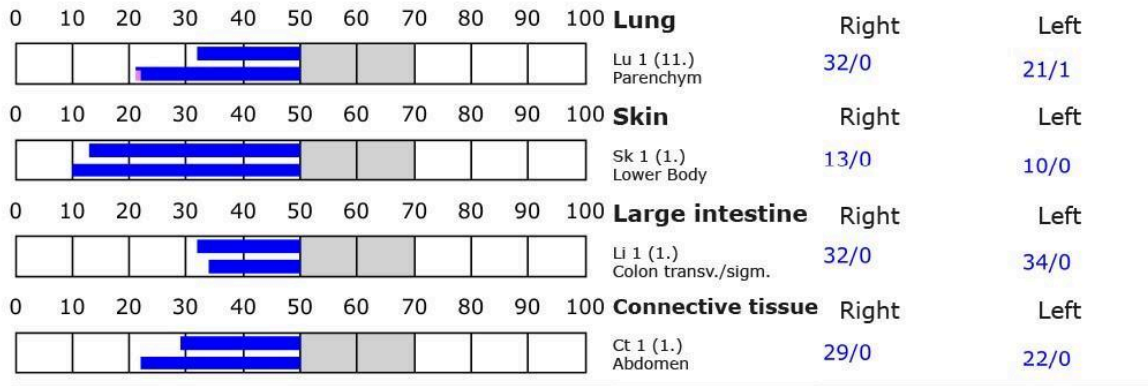
As the BESA graphs and the pie chart show, all measurement results were in the blue and largely low energy range. In relation to the organs tested, this corresponds to a relatively severe energy deficiency, as the following BESA graphs also show.



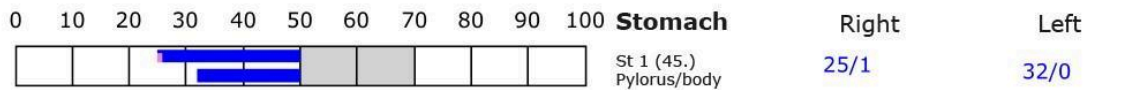
## BESA basic test

+++ : Indicator decline > 15 Skt.    T: Total inflammation (>89 Skt.)    D: Degeneration (< 50 Skt.)    Standard values: (50-70 Skt.)  
 ++ : Indicator decline 6-15 Skt.    P: Partial inflammation (70-89 Skt.)  
 + : Indicator decline 3-5 Skt.

### Element: lu - sk - li - ct



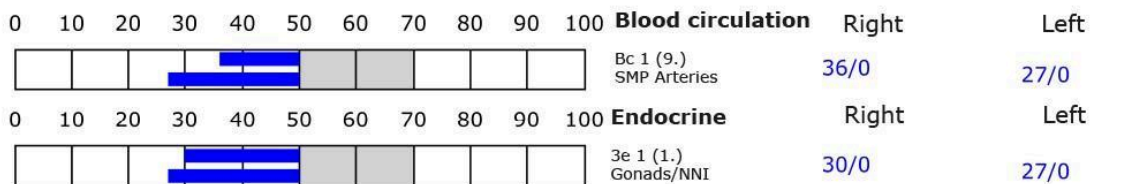
### Element: st - nd - ps - od



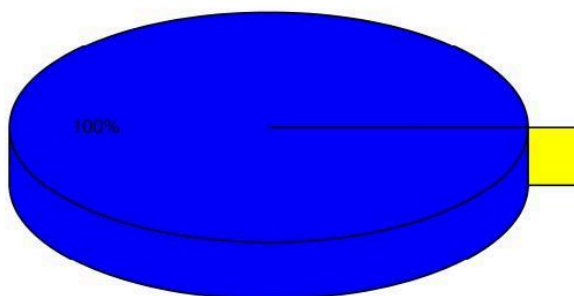
## BESA basic test

+++ : Indicator decline > 15 Skt.    T: Total inflammation (>89 Skt.)    D: Degeneration (< 50 Skt.)    Standard values: (50-70 Skt.)  
 ++ : Indicator decline 6-15 Skt.    P: Partial inflammation (70-89 Skt.)  
 + : Indicator decline 3-5 Skt.

### Element: bc - 3e



## Overview of BESA measuring



- Red: values with indicator decline  
Decline greater than 2 ( )
- Yellow: high values without indicator decline  
Values over 70 ( )
- Blue: low values  
Values lower 50 (100%)
- Green: standard values  
Values between 50 and 70 ( )



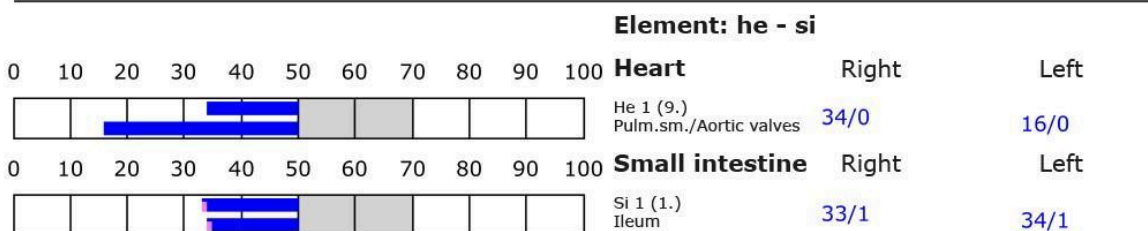
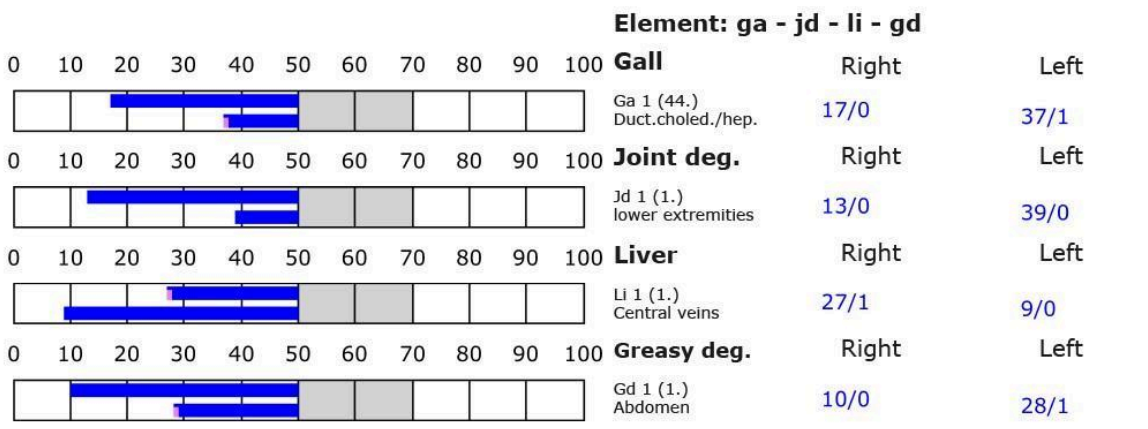
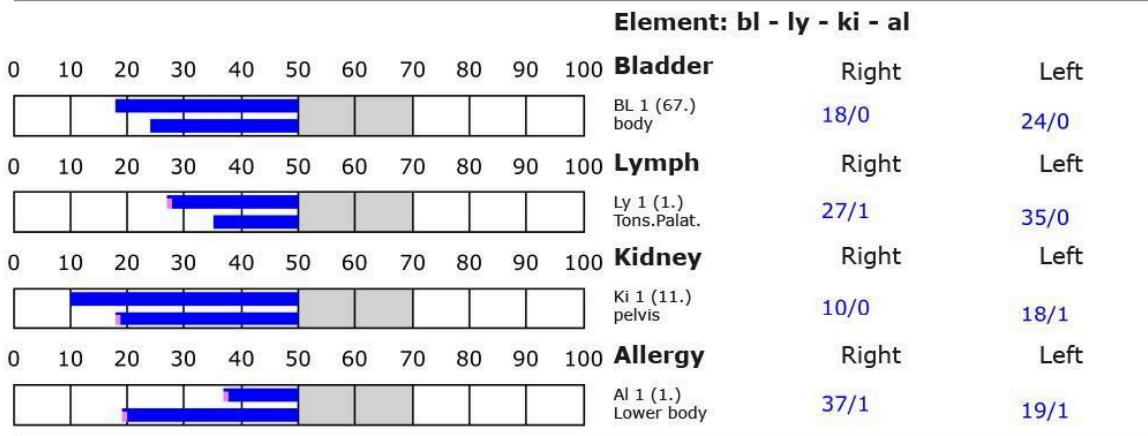
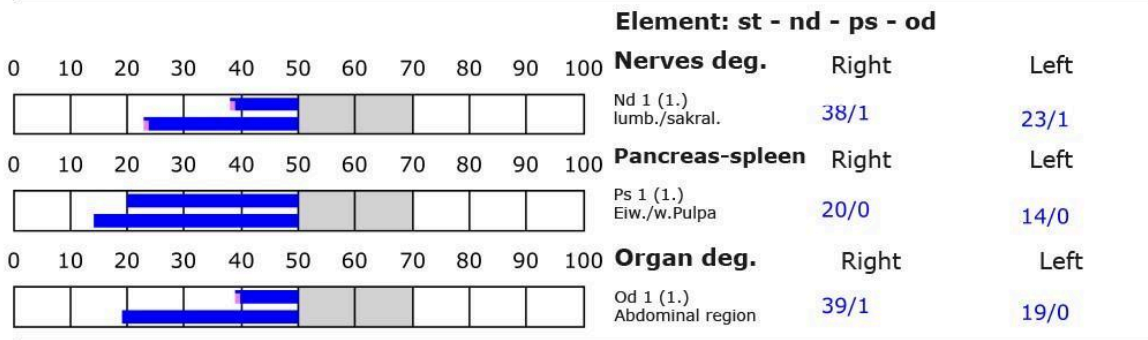
## BESA basic test

+++ : Indicator decline > 15 Skt.  
 ++ : Indicator decline 6-15 Skt.  
 + : Indicator decline 3-5 Skt.

T: Total inflammation (>89 Skt.)  
 P: Partial inflammation (70-89 Skt.)

D: Degeneration (< 50 Skt.)

Standard values: (50-70 Skt.)





## BESA 2 Testing AFTER

### BESA 2 Testing AFTER during confrontation with the test object

BESA test evaluation P77 2.1

from **30.05 2024 at 10:09 – 10:15** (6 minutes) Page 23 to 26

#### result:

The measurement result showed a clear and therefore significant improvement at all acupuncture points and in the subject's energetic state.

**100 % in the green area**

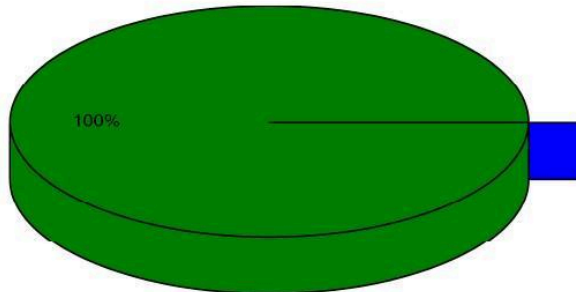
#### Conclusion:

As the following BESA graphs show, all measured values are in the green, optimal range. The test object, which was tested on the test person on an energy-informative basis, had a harmonizing effect on the energy-informative field. Viewed in depth, this means that the test object was even able to harmonize the strongly degenerative measured values from the BESA BEFORE test.

The subsequent comparisons of the BESA graphs confirm the changes or the improvement of the stressed acupuncture points on the subject's meridian system through the test object.



## Overview of BESA measuring



- Red: values with indicator decline  
Decline greater than 2 ( )
- Yellow: high values without indicator decline  
Values over 70 ( )
- Blue: low values  
Values lower 50 ( )
- Green: standard values  
Values between 50 and 70 (100%)





## BESA basic test

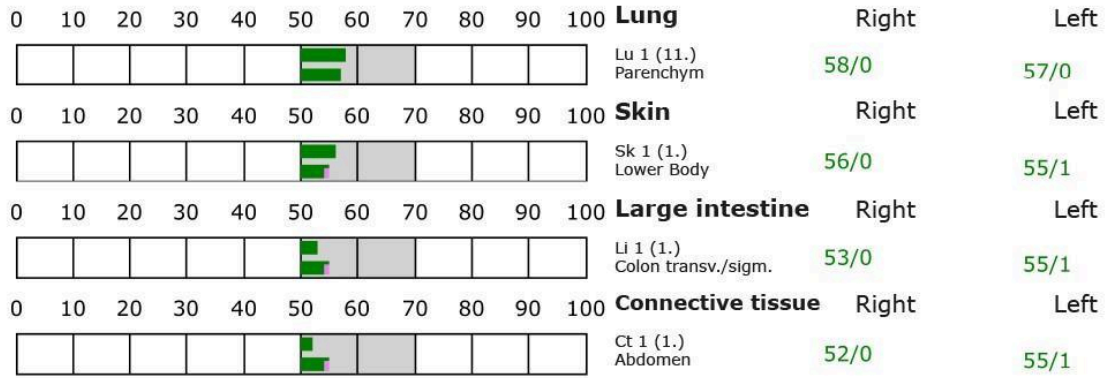
+++ : Indicator decline > 15 Skt.  
 ++ : Indicator decline 6-15 Skt.  
 + : Indicator decline 3-5 Skt.

T: Total inflammation (>89 Skt.)  
 P: Partial inflammation (70-89 Skt.)

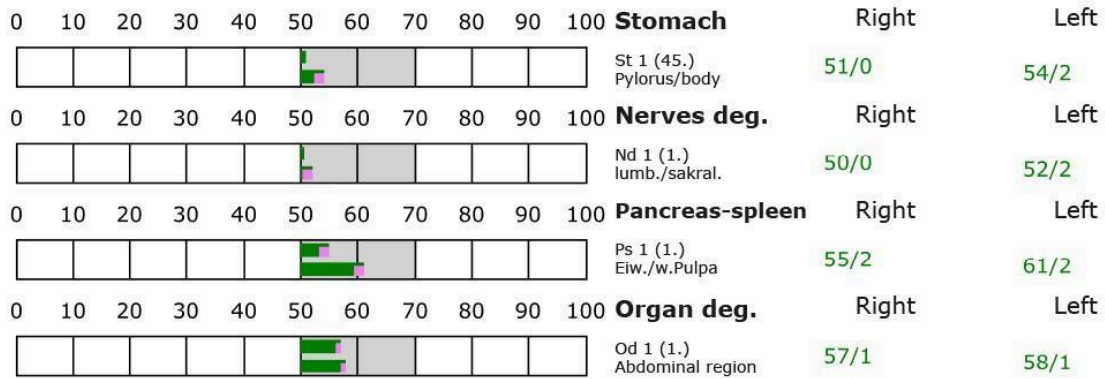
D: Degeneration (< 50 Skt.)

Standard values: (50-70 Skt.)

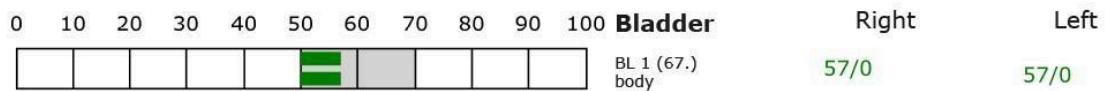
### Element: lu - sk - li - ct



### Element: st - nd - ps - od



### Element: bl - ly - ki - al





## BESA basic test

+++ : Indicator decline > 15 Skt.  
 ++ : Indicator decline 6-15 Skt.  
 + : Indicator decline 3-5 Skt.

T: Total inflammation (>89 Skt.)  
 P: Partial inflammation (70-89 Skt.)

D: Degeneration (< 50 Skt.)

Standard values: (50-70 Skt.)

Element: bl - ly - ki - al		
0 10 20 30 40 50 60 70 80 90 100	<b>Lymph</b>	Right Left
	Ly 1 (1.) Tons.Palat.	55/0 53/1
0 10 20 30 40 50 60 70 80 90 100	<b>Kidney</b>	Right Left
	Ki 1 (11.) pelvis	57/2 54/1
0 10 20 30 40 50 60 70 80 90 100	<b>Allergy</b>	Right Left
	Al 1 (1.) Lower body	55/2 56/1

Element: ga - jd - li - gd		
0 10 20 30 40 50 60 70 80 90 100	<b>Gall</b>	Right Left
	Ga 1 (44.) Duct.choled./hep.	62/1 62/0
0 10 20 30 40 50 60 70 80 90 100	<b>Joint deg.</b>	Right Left
	Jd 1 (1.) lower extremities	56/1 56/1
0 10 20 30 40 50 60 70 80 90 100	<b>Liver</b>	Right Left
	Li 1 (1.) Central veins	52/1 58/0
0 10 20 30 40 50 60 70 80 90 100	<b>Greasy deg.</b>	Right Left
	Gd 1 (1.) Abdomen	54/1 62/0

Element: he - si		
0 10 20 30 40 50 60 70 80 90 100	<b>Heart</b>	Right Left
	He 1 (9.) Pulm.sm./Aortic valves	50/0 55/0
0 10 20 30 40 50 60 70 80 90 100	<b>Small intestine</b>	Right Left
	Si 1 (1.) Ileum	51/1 60/1

Element: bc - 3e		
0 10 20 30 40 50 60 70 80 90 100	<b>Blood circulation</b>	Right Left
	Bc 1 (9.) SMP Arteries	54/1 56/0
0 10 20 30 40 50 60 70 80 90 100	<b>Endocrine</b>	Right Left
	3e 1 (1.) Gonads/NNI	50/0 53/0



## Proband 9 P17 EG-QV BESA 1 Testing BASIC-BEFORE

### **BESA 1 Testing BASIC BEFORE quantum entangled as status**

BESA test evaluation P77 2.1

from **24-05-2024 at 18:34 – 18:38** (4 minutes) Page 26 to 28

#### **result:**

In view of the age, the measured values indicated a largely stressful picture of the energy-informative system measured via the meridian end points (acupuncture points) and its subordinate organs or organ systems.

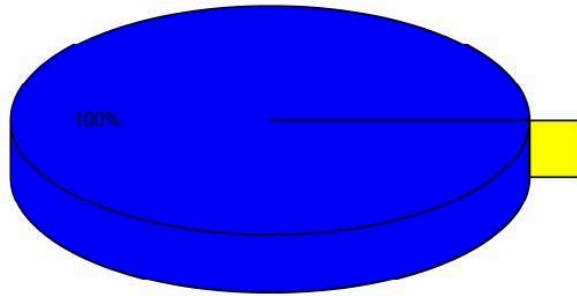
**100 % in the blue area**

#### **Conclusion:**

As the BESA graphs and the pie chart show, 100% of the measurement results were in the blue and, in some cases, deeply degenerative range.



## Overview of BESA measuring



- Red: values with indicator decline  
Decline greater than 2 ( )
- Yellow: high values without indicator decline  
Values over 70 ( )
- Blue: low values  
Values lower 50 (100%)
- Green: standard values  
Values between 50 and 70 ( )

## BESA basic test

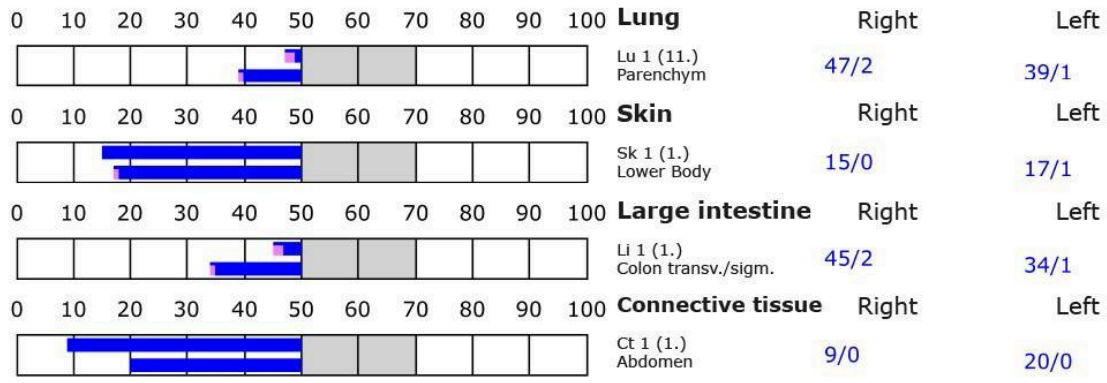
+++ : Indicator decline > 15 Skt.  
 ++ : Indicator decline 6-15 Skt.  
 + : Indicator decline 3-5 Skt.

T: Total inflammation (>89 Skt.)  
 P: Partial inflammation (70-89 Skt.)

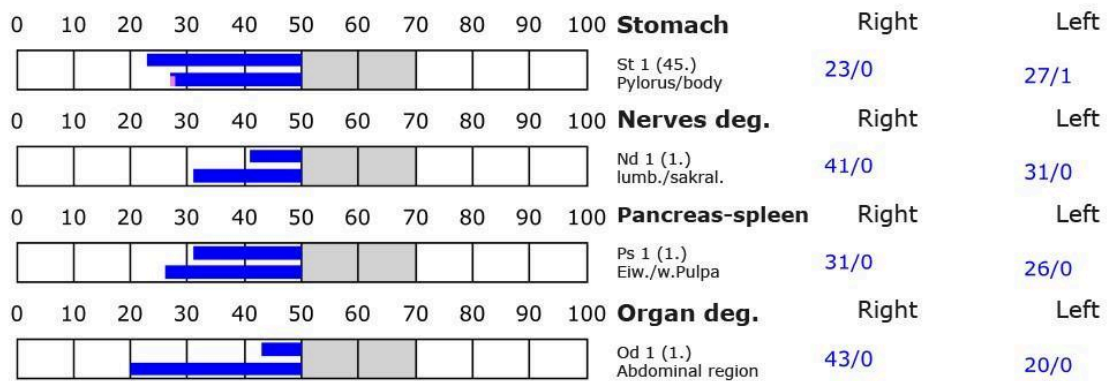
D: Degeneration (< 50 Skt.)

Standard values: (50-70 Skt.)

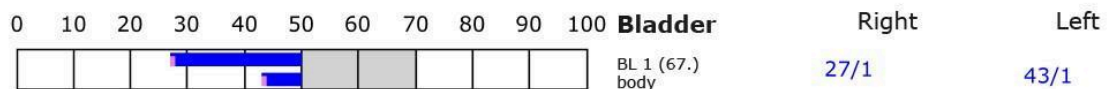
### Element: lu - sk - li - ct



### Element: st - nd - ps - od



### Element: bl - ly - ki - al





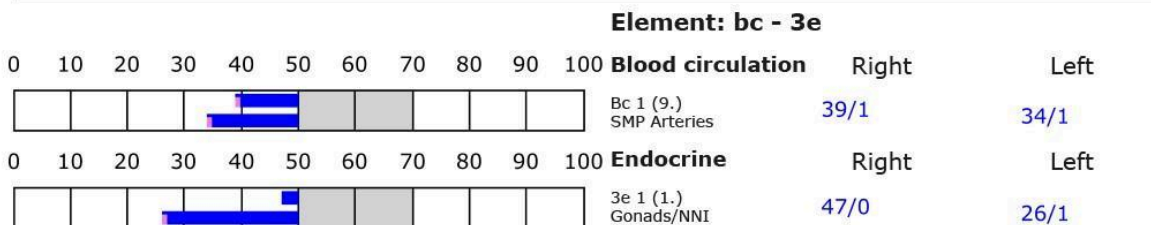
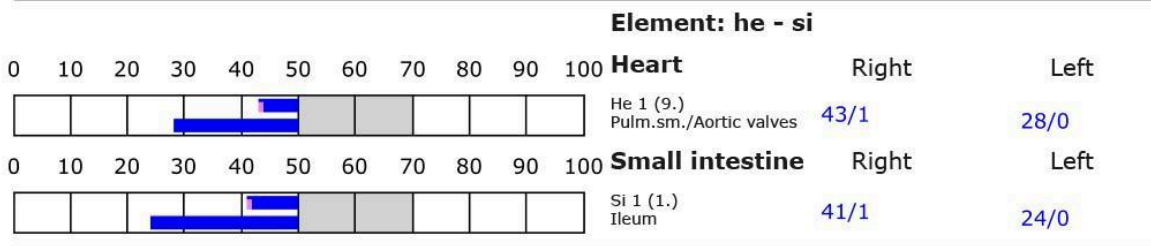
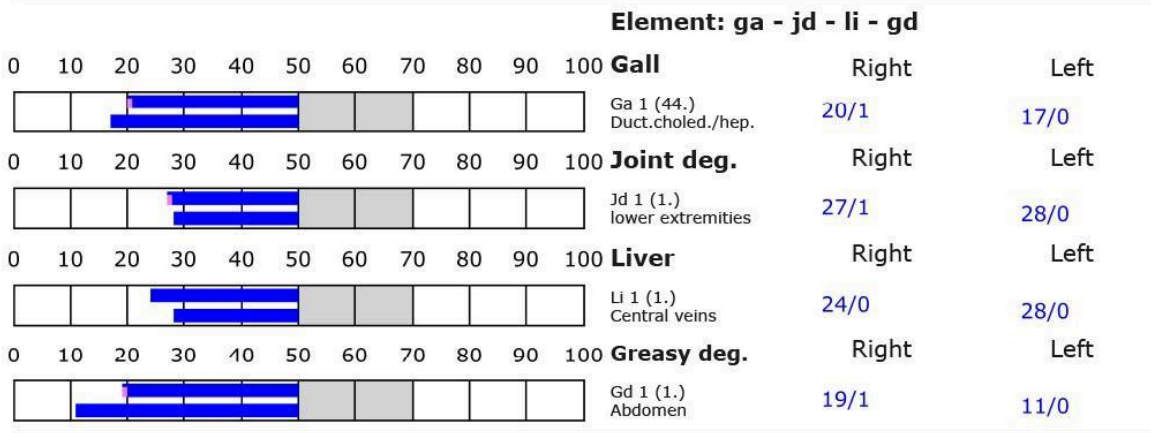
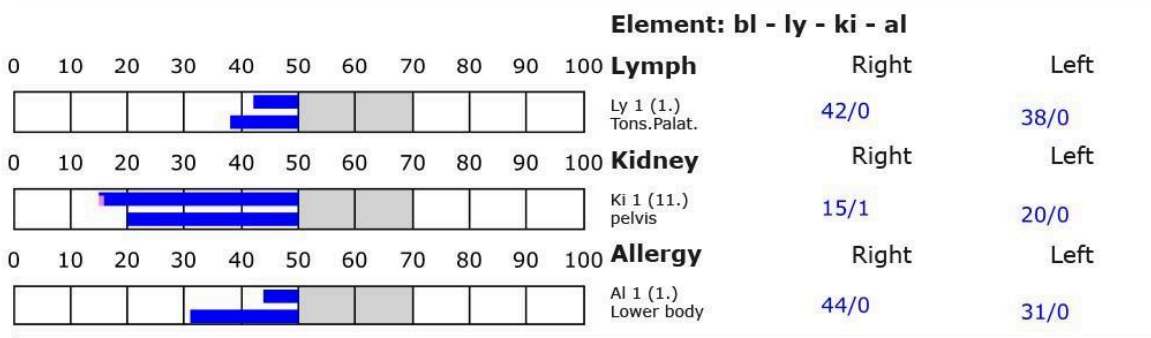
## BESA basic test

+++ : Indicator decline > 15 Skt.  
 ++ : Indicator decline 6-15 Skt.  
 + : Indicator decline 3-5 Skt.

T: Total inflammation (>89 Skt.)  
 P: Partial inflammation (70-89 Skt.)

D: Degeneration (< 50 Skt.)

Standard values: (50-70 Skt.)





## BESA 2 Testing AFTER

### **BESA 2 testing AFTER, during the quantum entangled confrontation with the test object**

BESA test evaluation P77 2.1

from **24-05-2024 at 18:44 – 18:54** (10 minutes) Page 29 to 31

#### **result:**

The measurement result showed a clear and therefore significant improvement at all acupuncture points and in the subject's energetic state.

**100 % in the green area**

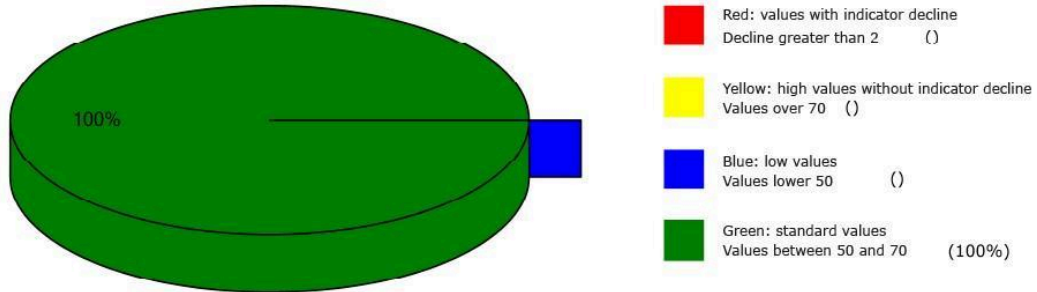
#### **Concluution:**

As the following BESA graphs show, all measured values are in the green, optimal range. The test object, which was tested on the test person on an energy-informative basis, had a harmonizing effect on the energy-informative field. Viewed in depth, this means that the test object was even able to harmonize the strongly degenerative blue and pathological readings from the BESA-PREVIOUS test.

The subsequent comparisons of the BESA graphs confirm the changes or the improvement of the stressed acupuncture points on the subject's meridian system through the test object.



## Overview of BESA measuring





## BESA basic test

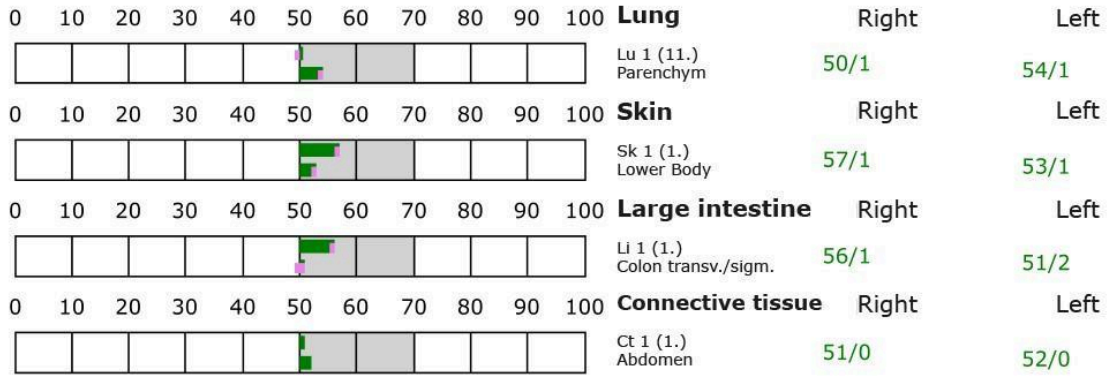
+++ : Indicator decline > 15 Skt.  
 ++ : Indicator decline 6-15 Skt.  
 + : Indicator decline 3-5 Skt.

T: Total inflammation (>89 Skt.)  
 P: Partial inflammation (70-89 Skt.)

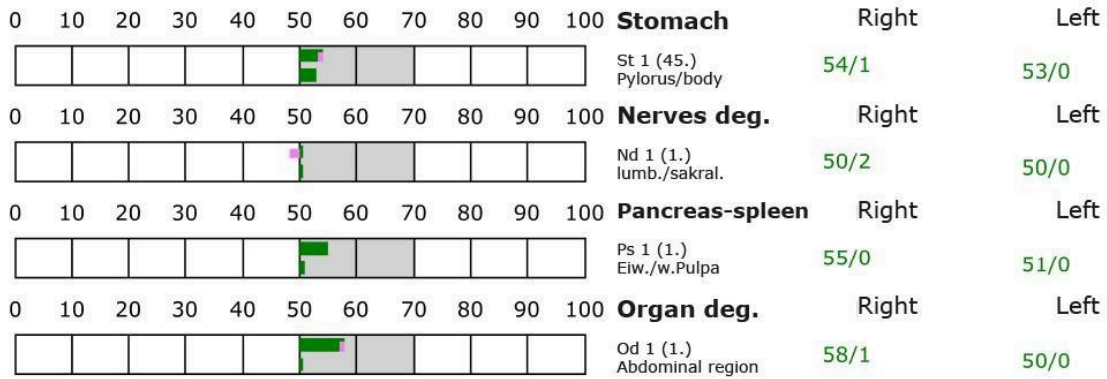
D: Degeneration (< 50 Skt.)

Standard values: (50-70 Skt.)

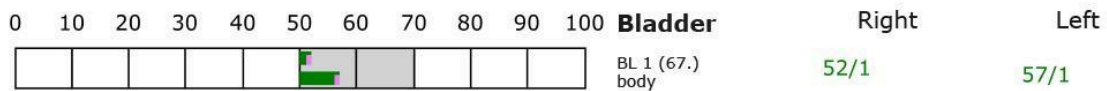
### Element: lu - sk - li - ct



### Element: st - nd - ps - od



### Element: bl - ly - ki - al







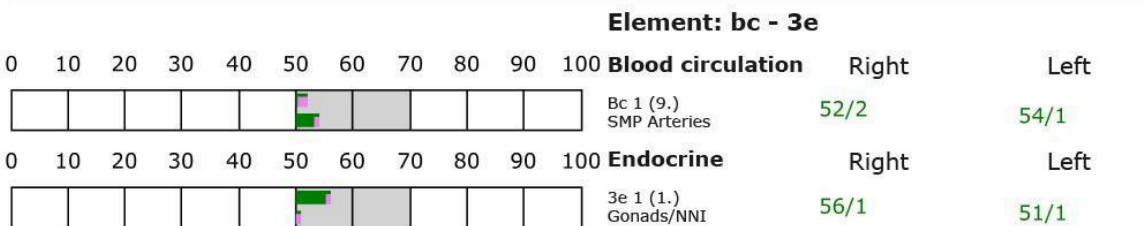
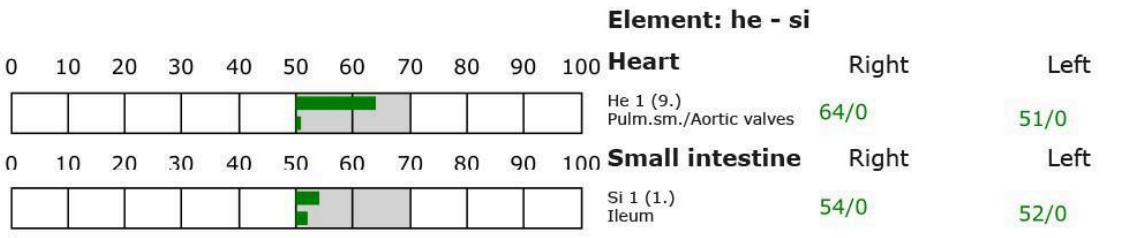
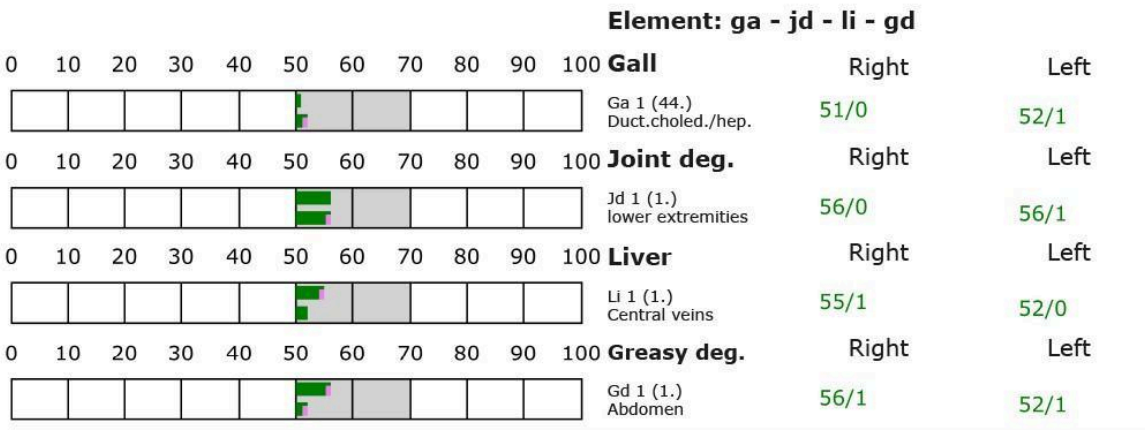
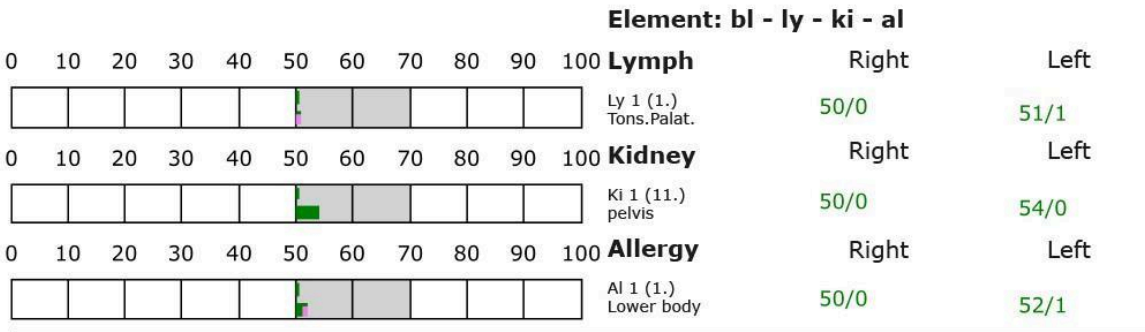
## BESA basic test

+++ : Indicator decline > 15 Skt.  
 ++ : Indicator decline 6-15 Skt.  
 + : Indicator decline 3-5 Skt.

T: Total inflammation (>89 Skt.)  
 P: Partial inflammation (70-89 Skt.)

D: Degeneration (< 50 Skt.)

Standard values: (50-70 Skt.)





## Proband 10 P4 EG-QV BESA 1 Testing BASIC - BEFORE

### BESA 1 testing BASIC VORHER quantum entangled as status

BESA test evaluation P77 2.1

from **15-05-2024 at 16:17 – 16:23** (6 minutes) Page 32 to 34

#### result:

The measured values indicated a balanced picture of the energy-informative system measured via the meridian end points (acupuncture points).

**52 % in the blue area**

**45 % in the green area**

**2 % in the red area**

**1 % in the yellow transition area**

#### Conclusion:

As the BESA graphs and the pie chart show, only 52% of the measurement results were in the blue and partly slightly degenerative range. This corresponds to a relatively balanced energy status.

The following BESA graphs confirm the strongly weakened energy-informative overall state..



### BESA basic test

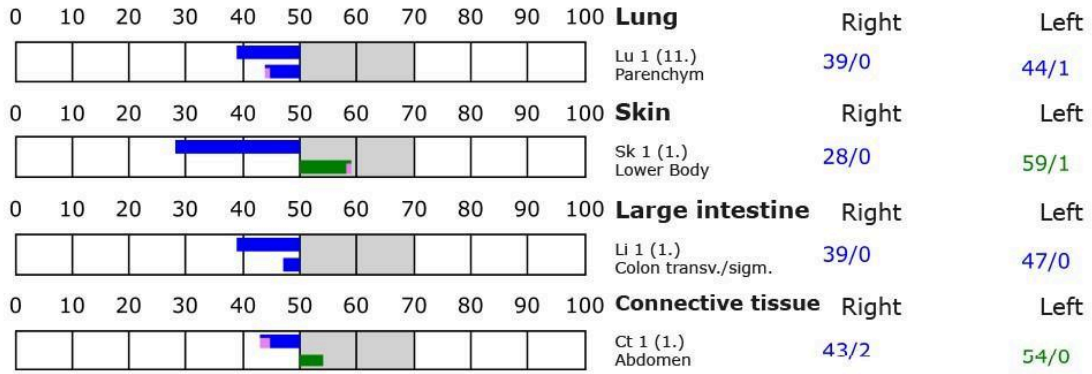
+++ : Indicator decline > 15 Skt.  
 ++ : Indicator decline 6-15 Skt.  
 + : Indicator decline 3-5 Skt.

T: Total inflammation (>89 Skt.)  
 P: Partial inflammation (70-89 Skt.)

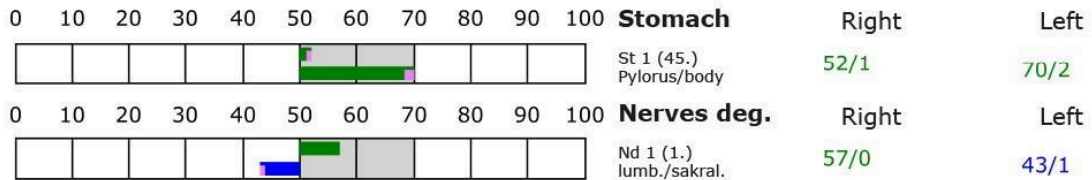
D: Degeneration (< 50 Skt.)

Standard values: (50-70 Skt.)

#### Element: lu - sk - li - ct



#### Element: st - nd - ps - od



### BESA basic test

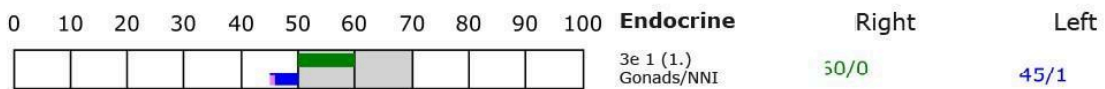
+++ : Indicator decline > 15 Skt.  
 ++ : Indicator decline 6-15 Skt.  
 + : Indicator decline 3-5 Skt.

T: Total inflammation (>89 Skt.)  
 P: Partial inflammation (70-89 Skt.)

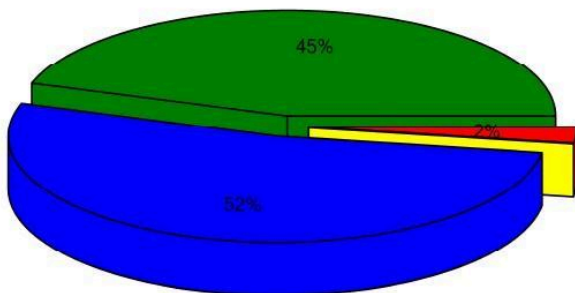
D: Degeneration (< 50 Skt.)

Standard values: (50-70 Skt.)

#### Element: bc - 3e



### Overview of BESA measuring



- Red: values with indicator decline  
Decline greater than 2 (2%)
- Yellow: high values without indicator decline  
Values over 70 ( )
- Blue: low values  
Values lower 50 (52%)
- Green: standard values  
Values between 50 and 70 (45%)



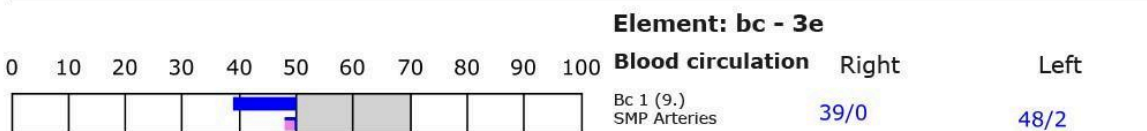
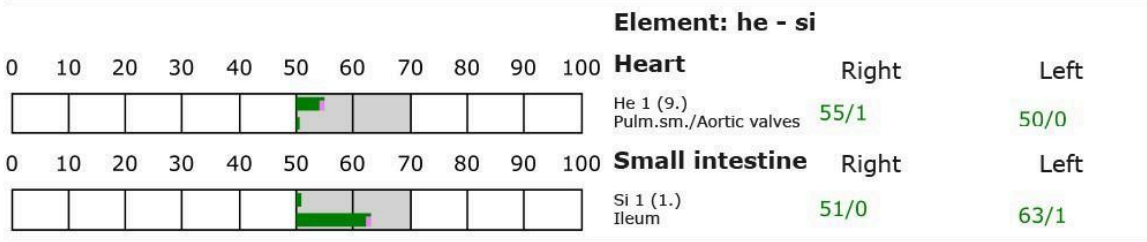
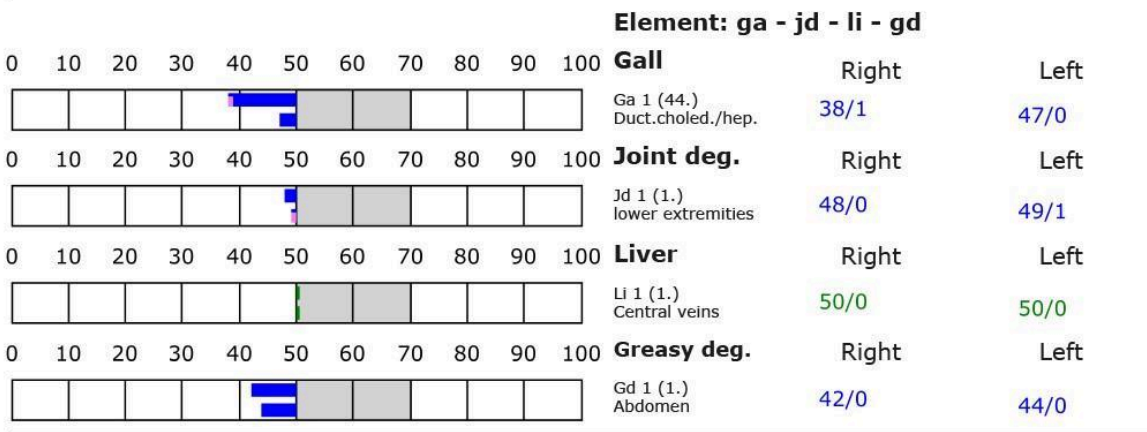
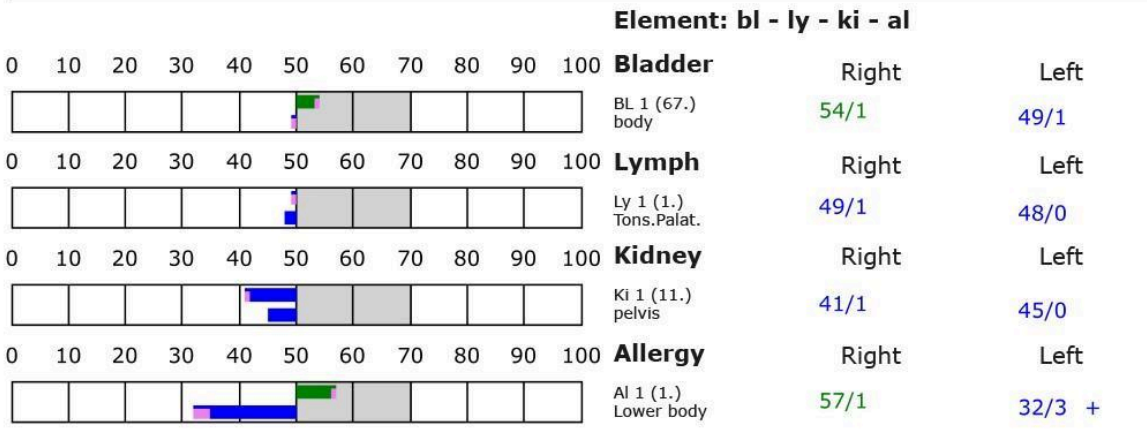
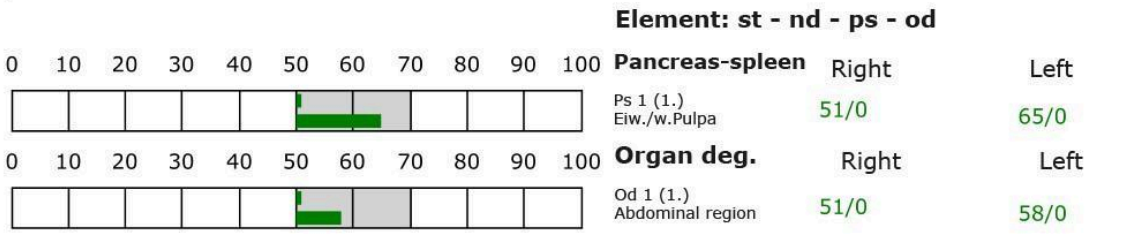
## BESA basic test

+++ : Indicator decline > 15 Skt.  
 ++ : Indicator decline 6-15 Skt.  
 + : Indicator decline 3-5 Skt.

T: Total inflammation (>89 Skt.)  
 P: Partial inflammation (70-89 Skt.)

D: Degeneration (< 50 Skt.)

Standard values: (50-70 Skt.)





## BESA 2 Testing AFTER

### **BESA 2 testing AFTER during the quantum entangled confrontation with the test object**

BESA test evaluation P77 2.1

from **24-05-2024 at 16:03 – 16:10** (7 minutes) Page 35 to 37

#### **result:**

The measurement result showed a clear and therefore significant improvement at all acupuncture points and in the subject's energetic state.

**100 % in the green area**

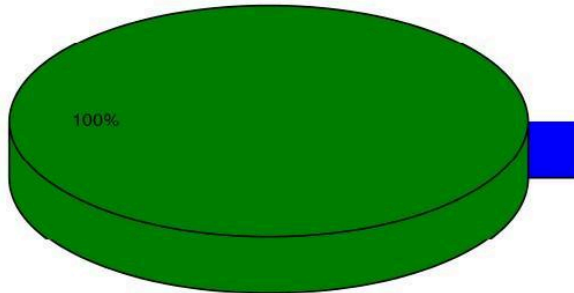
#### **Conclusion:**

As the following BESA graphs show, all measured values are in the green, optimal range. The test object, which was tested on the test person on an energy-informative basis, showed a harmonizing effect on the test person's energy-informative field. Viewed in depth, this means that the harmonizing effect of the test object also extended to the lower measured values.

The subsequent comparisons of the BESA graphs confirm the changes or improvement of the stressed acupuncture points on the subject's meridian system as a result of the test object.



## Overview of BESA measuring



- Red: values with indicator decline  
Decline greater than 2 ( )
- Yellow: high values without indicator decline  
Values over 70 ( )
- Blue: low values  
Values lower 50 ( )
- Green: standard values  
Values between 50 and 70 (100%)

## BESA basic test

+++ : Indicator decline > 15 Skt.  
 ++ : Indicator decline 6-15 Skt.  
 + : Indicator decline 3-5 Skt.

T: Total inflammation (>89 Skt.)  
 P: Partial inflammation (70-89 Skt.)

D: Degeneration (< 50 Skt.)

Standard values: (50-70 Skt.)

### Element: lu - sk - li - ct

0	10	20	30	40	50	60	70	80	90	100	Element	Right	Left
											<b>Lung</b>		
											Lu 1 (11.) Parenchym	52/0	60/2
											<b>Skin</b>		
											Sk 1 (1.) Lower Body	52/0	53/1
											<b>Large intestine</b>		
											Li 1 (1.) Colon transv./sigm.	59/0	56/0
											<b>Connective tissue</b>		
											Ct 1 (1.) Abdomen	51/0	53/1

### Element: st - nd - ps - od

0	10	20	30	40	50	60	70	80	90	100	Element	Right	Left
											<b>Stomach</b>		
											St 1 (45.) Pylorus/body	54/1	56/2
											<b>Nerves deg.</b>		
											Nd 1 (1.) lumb./sakral.	57/1	59/1
											<b>Pancreas-spleen</b>		
											Ps 1 (1.) Eiw./w.Pulpa	58/0	53/1
											<b>Organ deg.</b>		
											Od 1 (1.) Abdominal region	53/0	59/0

### Element: bl - ly - ki - al

0	10	20	30	40	50	60	70	80	90	100	Element	Right	Left
											<b>Bladder</b>		
											BL 1 (67.) body	55/1	62/1



## BESA basic test

+++ : Indicator decline > 15 Skt.  
 ++ : Indicator decline 6-15 Skt.  
 + : Indicator decline 3-5 Skt.

T: Total inflammation (>89 Skt.)  
 P: Partial inflammation (70-89 Skt.)

D: Degeneration (< 50 Skt.)

Standard values: (50-70 Skt.)

										Element: bl - ly - ki - al			
										Right	Left		
0	10	20	30	40	50	60	70	80	90	100	<b>Lymph</b>		
										Ly 1 (1.) Tons.Palat.	52/0	59/1	
0	10	20	30	40	50	60	70	80	90	100	<b>Kidney</b>	Right	Left
										Ki 1 (11.) pelvis	55/1	59/1	
0	10	20	30	40	50	60	70	80	90	100	<b>Allergy</b>	Right	Left
										Al 1 (1.) Lower body	54/0	59/1	

										Element: ga - jd - li - gd			
										Right	Left		
0	10	20	30	40	50	60	70	80	90	100	<b>Gall</b>	Right	Left
										Ga 1 (44.) Duct.choled./hep.	55/0	51/0	
0	10	20	30	40	50	60	70	80	90	100	<b>Joint deg.</b>	Right	Left
										Jd 1 (1.) lower extremities	51/0	55/1	
0	10	20	30	40	50	60	70	80	90	100	<b>Liver</b>	Right	Left
										Li 1 (1.) Central veins	54/0	53/1	
0	10	20	30	40	50	60	70	80	90	100	<b>Greasy deg.</b>	Right	Left
										Gd 1 (1.) Abdomen	51/0	54/0	

										Element: he - si			
										Right	Left		
0	10	20	30	40	50	60	70	80	90	100	<b>Heart</b>	Right	Left
										He 1 (9.) Pulm.sm./Aortic valves	60/1	59/0	
0	10	20	30	40	50	60	70	80	90	100	<b>Small intestine</b>	Right	Left
										Si 1 (1.) Ileum	62/1	57/0	

										Element: bc - 3e			
										Right	Left		
0	10	20	30	40	50	60	70	80	90	100	<b>Blood circulation</b>	Right	Left
										Bc 1 (9.) SMP Arteries	56/0	58/1	
0	10	20	30	40	50	60	70	80	90	100	<b>Endocrine</b>	Right	Left
										3e 1 (1.) Gonads/NNI	50/0	67/1	



## Proband 11 P19 EG BESA 1 Testing BASIC-BEFORE

### BESA 1 Testing BASIC BEFORE as status

BESA test evaluation P77 2.1  
from **28-05-2024 at 10:31 – 11:03** (32 minutes) Page 38 to 40

#### result:

The values measured indicated that the energy-informative system measured via the meridian end points (acupuncture points) and its subordinate organ systems were largely heavily loaded.

**97 % in the blue area**

**2 % in the green area**

**1 % in the yellow transition area**

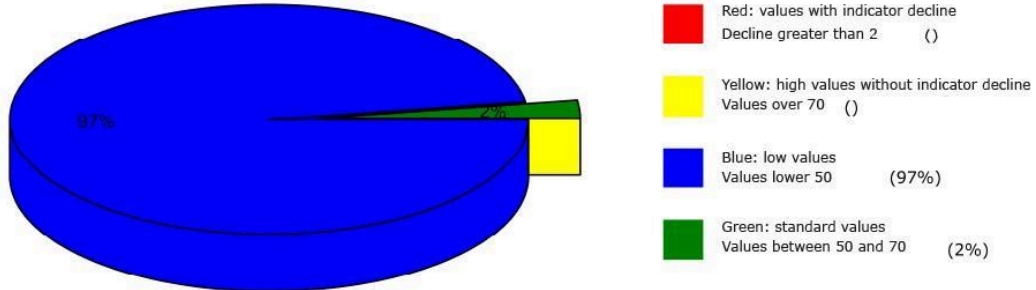
#### Conclusion:

As the BESA graphs and the pie chart show, almost 100% of the measurement results were in the blue and in some cases very deep degenerative range. In relation to the organs tested, this corresponds to a severely weakened energy system.





## Overview of BESA measuring





## BESA basic test

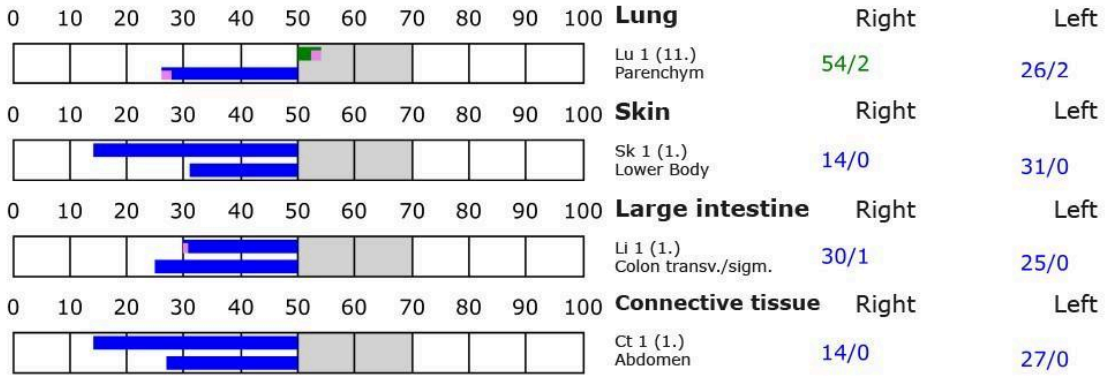
+++ : Indicator decline > 15 Skt.  
 ++ : Indicator decline 6-15 Skt.  
 + : Indicator decline 3-5 Skt.

T: Total inflammation (>89 Skt.)  
 P: Partial inflammation (70-89 Skt.)

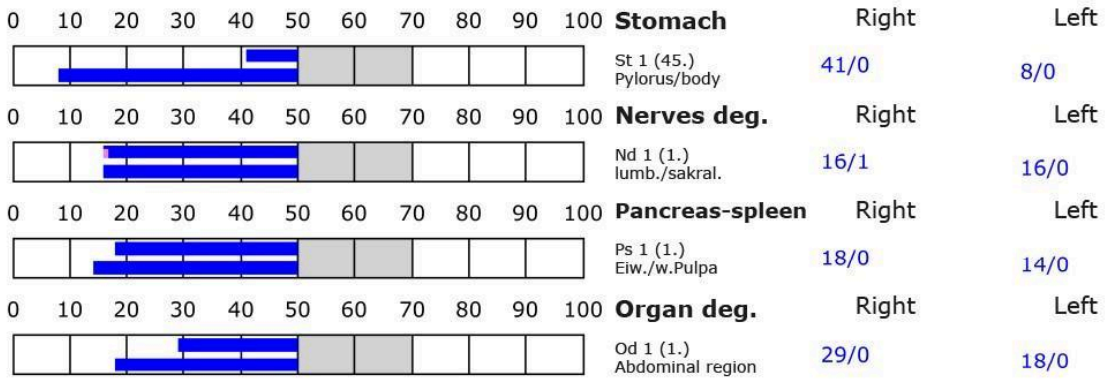
D: Degeneration (< 50 Skt.)

Standard values: (50-70 Skt.)

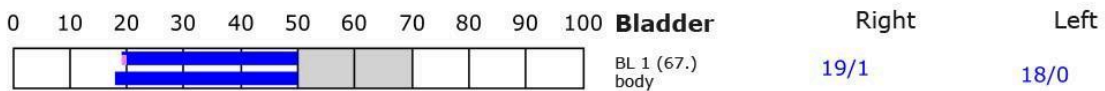
### Element: lu - sk - li - ct



### Element: st - nd - ps - od



### Element: bl - ly - ki - al





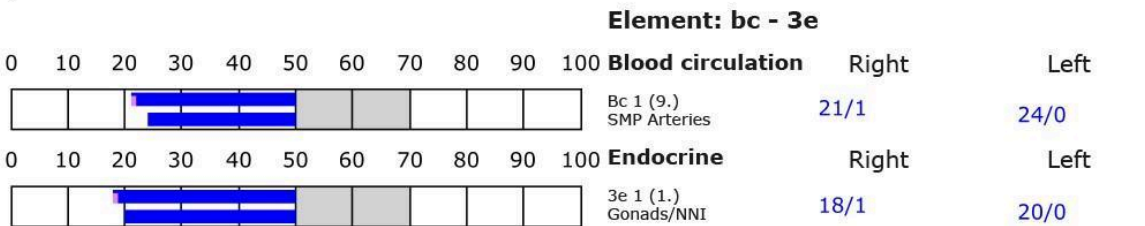
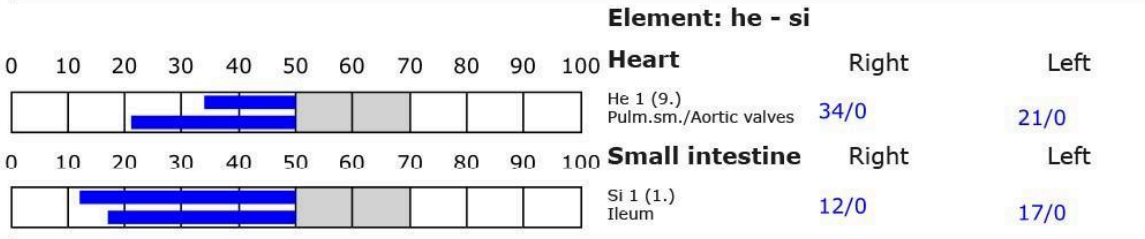
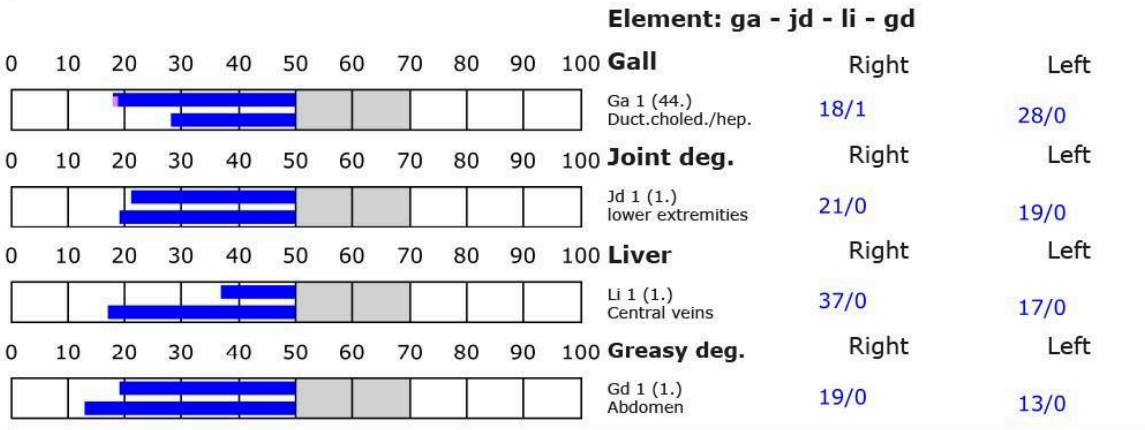
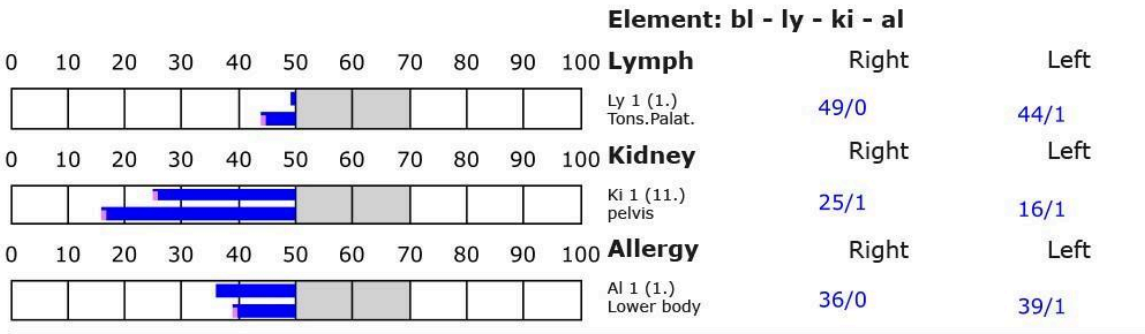
## BESA basic test

+++ : Indicator decline > 15 Skt.  
 ++ : Indicator decline 6-15 Skt.  
 + : Indicator decline 3-5 Skt.

T: Total inflammation (>89 Skt.)  
 P: Partial inflammation (70-89 Skt.)

D: Degeneration (< 50 Skt.)

Standard values: (50-70 Skt.)





## BESA 2 Testing AFTER

### **BESA 2 Testing AFTER, during the confrontation with the test object**

BESA test evaluation P77 2.1

from **28-05-2024 at 12:13 – 12:17** (4 minutes) Page 41 to 43

#### **result:**

The measurement result showed a clear and therefore significant improvement at all acupuncture points and in the subject's energetic state.

**100 % in the green area**

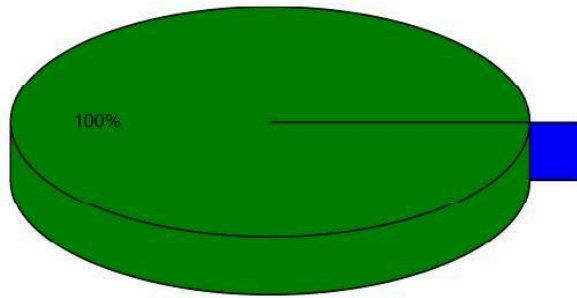
#### **Conclusion:**

As the following BESA graphs show, all measured values are in the green, optimal range. The test object, which was tested on the subject on an energy-informative basis, showed a harmonizing effect on the subject's energy-informative field.

The subsequent comparisons of the BESA graphs confirm the changes or improvement of the stressed acupuncture points on the subject's meridian system through the test object.



## Overview of BESA measuring



- Red: values with indicator decline  
Decline greater than 2 ( )
- Yellow: high values without indicator decline  
Values over 70 ( )
- Blue: low values  
Values lower 50 ( )
- Green: standard values  
Values between 50 and 70 (100%)

## BESA basic test

+++ : Indicator decline > 15 Skt.  
 ++ : Indicator decline 6-15 Skt.  
 + : Indicator decline 3-5 Skt.

T: Total inflammation (>89 Skt.)  
 P: Partial inflammation (70-89 Skt.)

D: Degeneration (< 50 Skt.)

Standard values: (50-70 Skt.)

### Element: lu - sk - li - ct

0	10	20	30	40	50	60	70	80	90	100	Element	Right	Left
											<b>Lung</b>		
											Lu 1 (11.) Parenchym	52/1	54/0
											<b>Skin</b>		
											Sk 1 (1.) Lower Body	53/0	59/0
											<b>Large intestine</b>		
											Li 1 (1.) Colon transv./sigm.	52/0	52/0
											<b>Connective tissue</b>		
											Ct 1 (1.) Abdomen	54/0	54/1

### Element: st - nd - ps - od

0	10	20	30	40	50	60	70	80	90	100	Element	Right	Left
											<b>Stomach</b>		
											St 1 (45.) Pylorus/body	54/0	56/0
											<b>Nerves deg.</b>		
											Nd 1 (1.) lumb./sakral.	52/2	53/1
											<b>Pancreas-spleen</b>		
											Ps 1 (1.) Eiw./w.Pulpa	53/0	61/1
											<b>Organ deg.</b>		
											Od 1 (1.) Abdominal region	55/0	56/0

### Element: bl - ly - ki - al

0	10	20	30	40	50	60	70	80	90	100	Element	Right	Left
											<b>Bladder</b>		
											BL 1 (67.) body	53/2	56/1



## BESA basic test

+++ : Indicator decline > 15 Skt.  
 ++ : Indicator decline 6-15 Skt.  
 + : Indicator decline 3-5 Skt.

T: Total inflammation (>89 Skt.)  
 P: Partial inflammation (70-89 Skt.)

D: Degeneration (< 50 Skt.)

Standard values: (50-70 Skt.)

											Element: bl - ly - ki - al		
											Right	Left	
0	10	20	30	40	50	60	70	80	90	100	<b>Lymph</b>		
											Ly 1 (1.) Tons.Palat.	53/1	51/0
0	10	20	30	40	50	60	70	80	90	100	<b>Kidney</b>		
											Ki 1 (11.) pelvis	51/0	53/0
0	10	20	30	40	50	60	70	80	90	100	<b>Allergy</b>		
											Al 1 (1.) Lower body	51/1	56/1

											Element: ga - jd - li - gd		
											Right	Left	
0	10	20	30	40	50	60	70	80	90	100	<b>Gall</b>		
											Ga 1 (44.) Duct.choled./hep.	54/0	55/0
0	10	20	30	40	50	60	70	80	90	100	<b>Joint deg.</b>		
											Jd 1 (1.) lower extremities	52/0	51/1
0	10	20	30	40	50	60	70	80	90	100	<b>Liver</b>		
											Li 1 (1.) Central veins	58/1	55/0
0	10	20	30	40	50	60	70	80	90	100	<b>Greasy deg.</b>		
											Gd 1 (1.) Abdomen	53/1	54/0

											Element: he - si		
											Right	Left	
0	10	20	30	40	50	60	70	80	90	100	<b>Heart</b>		
											He 1 (9.) Pulm.sm./Aortic valves	55/1	51/1
0	10	20	30	40	50	60	70	80	90	100	<b>Small intestine</b>		
											Si 1 (1.) Ileum	53/1	55/0

											Element: bc - 3e		
											Right	Left	
0	10	20	30	40	50	60	70	80	90	100	<b>Blood circulation</b>		
											Bc 1 (9.) SMP Arteries	52/0	53/1
0	10	20	30	40	50	60	70	80	90	100	<b>Endocrine</b>		
											3e 1 (1.) Gonads/NNI	51/1	52/0



## Proband 12-P24-EG

### BESA 1 Testing BASIC-BEFORE

#### **BESA 1 Testing BASIC BEFORE as status**

BESA test evaluation P77 2.1  
from **28-05-2024 at 13:05 – 13:12** (7 minutes) Page 44 to 46

#### **result:**

The measured values indicated a slightly degenerative picture at the energy-informative system measured via the meridian end points (acupuncture points).

**94 % in the blue area**

**2 % in the green area**

**1 % in the yellow transition area**

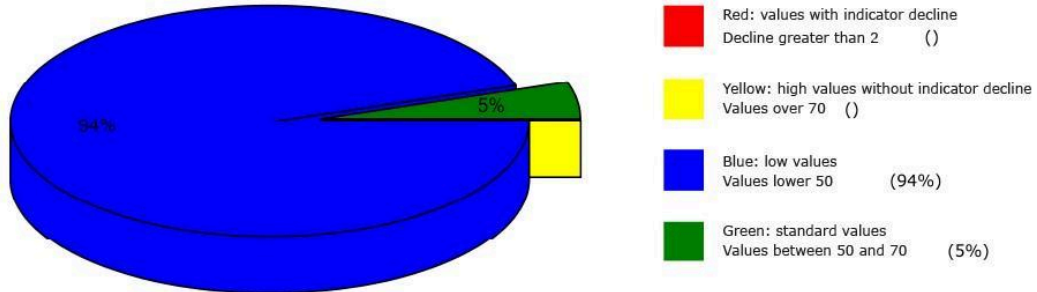
#### **Conclusion:**

As the BESA graphs and the pie chart show, 94% of the measurement results were in the blue and in some cases only slightly degenerative range. This corresponds to a moderate energy deficiency.

The following BESA graphs confirm the overall energy-informative state.



## Overview of BESA measuring







## BESA basic test

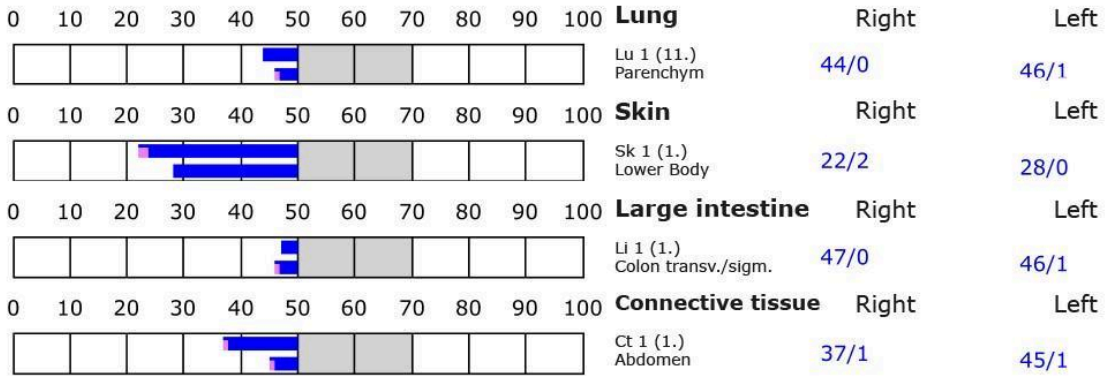
+++ : Indicator decline > 15 Skt.  
 ++ : Indicator decline 6-15 Skt.  
 + : Indicator decline 3-5 Skt.

T: Total inflammation (>89 Skt.)  
 P: Partial inflammation (70-89 Skt.)

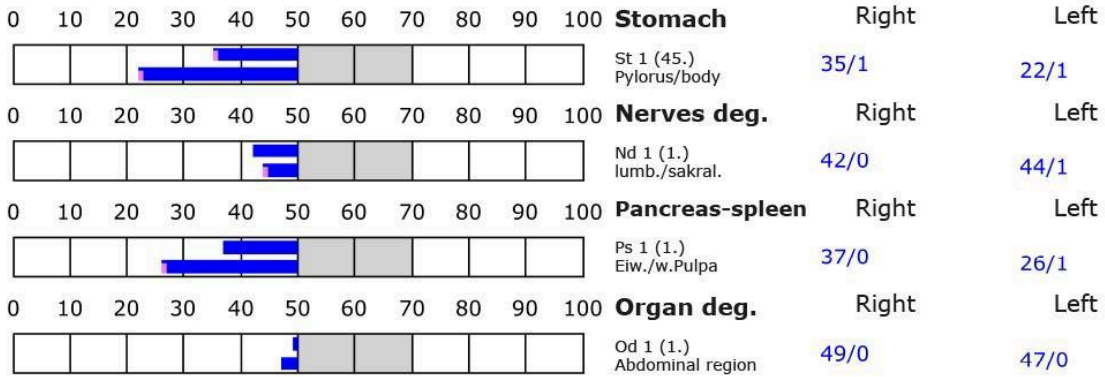
D: Degeneration (< 50 Skt.)

Standard values: (50-70 Skt.)

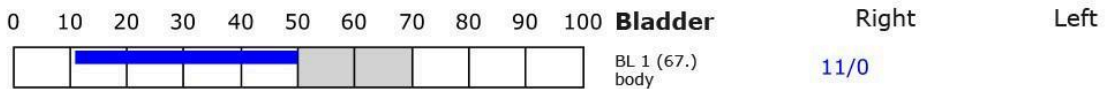
### Element: lu - sk - li - ct



### Element: st - nd - ps - od



### Element: bl - ly - ki - al





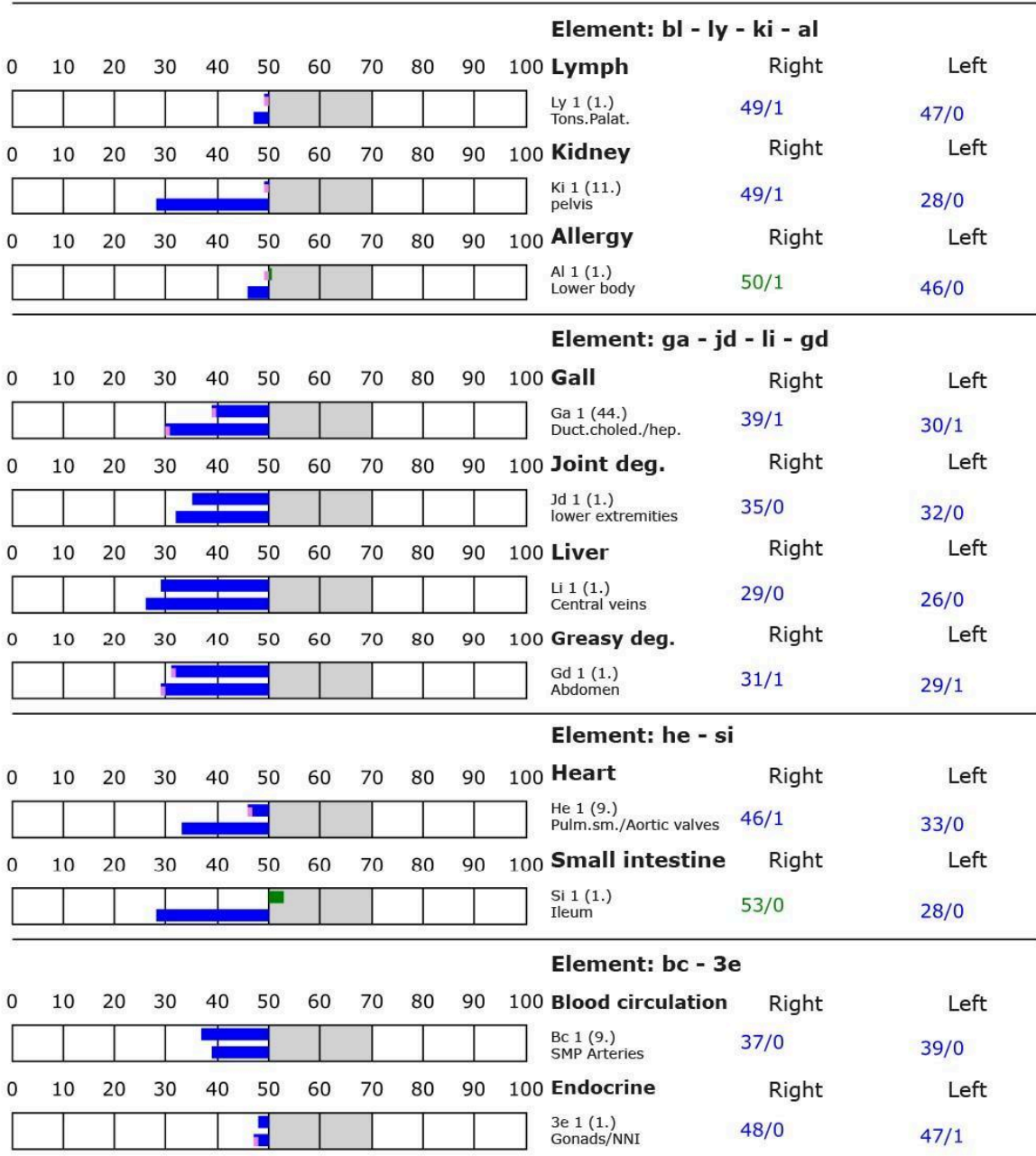
## BESA basic test

+++ : Indicator decline > 15 Skt.  
 ++ : Indicator decline 6-15 Skt.  
 + : Indicator decline 3-5 Skt.

T: Total inflammation (>89 Skt.)  
 P: Partial inflammation (70-89 Skt.)

D: Degeneration (< 50 Skt.)

Standard values: (50-70 Skt.)





## BESA 2 Testing AFTER

### **BESA 2 Testing AFTER during confrontation with the test object**

BESA test evaluation P77 2.1

from **28-05-2024 at 13:22 – 13:28** (6 minutes) Page 47 to 49

#### **result:**

The measurement result showed a clear and therefore significant improvement at all acupuncture points and in the subject's energetic state.

**100 % in the green area**

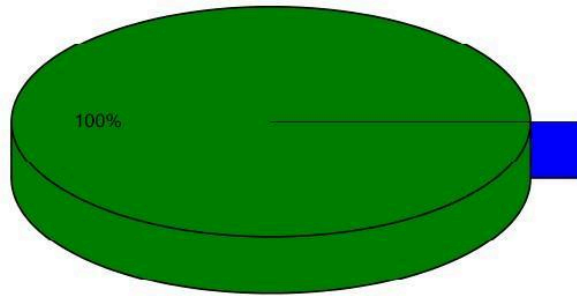
#### **Conclusion:**

As the following BESA graphs show, all measured values are in the green, optimal range. The test object, which was tested on the test person on an energy-informative basis, showed a harmonizing effect on the test person's energy-informative field. Viewed in depth, this means that the harmonizing effect of the test object also extended to the lower measured values.

The subsequent comparisons of the BESA graphs confirm the changes or improvement of the stressed acupuncture points on the subject's meridian system as a result of the test object.



## Overview of BESA measuring



- Red: values with indicator decline  
Decline greater than 2 ( )
- Yellow: high values without indicator decline  
Values over 70 ( )
- Blue: low values  
Values lower 50 ( )
- Green: standard values  
Values between 50 and 70 (100%)

## BESA basic test

+++ : Indicator decline > 15 Skt.  
 ++ : Indicator decline 6-15 Skt.  
 + : Indicator decline 3-5 Skt.

T: Total inflammation (>89 Skt.)  
 P: Partial inflammation (70-89 Skt.)

D: Degeneration (< 50 Skt.)

Standard values: (50-70 Skt.)

### Element: lu - sk - li - ct

0	10	20	30	40	50	60	70	80	90	100	Element	Right	Left
											<b>Lung</b>		
											Lu 1 (11.) Parenchym	52/2	53/0
											<b>Skin</b>		
											Sk 1 (1.) Lower Body	52/0	58/1
											<b>Large intestine</b>		
											Li 1 (1.) Colon transv./sigm.	53/1	52/1
											<b>Connective tissue</b>		
											Ct 1 (1.) Abdomen	52/0	54/0

### Element: st - nd - ps - od

0	10	20	30	40	50	60	70	80	90	100	Element	Right	Left
											<b>Stomach</b>		
											St 1 (45.) Pylorus/body	56/1	57/2
											<b>Nerves deg.</b>		
											Nd 1 (1.) lumb./sakral.	54/1	51/1
											<b>Pancreas-spleen</b>		
											Ps 1 (1.) Eiw./w.Pulpa	53/1	54/0
											<b>Organ deg.</b>		
											Od 1 (1.) Abdominal region	52/1	54/0

### Element: bl - ly - ki - al

0	10	20	30	40	50	60	70	80	90	100	Element	Right	Left
											<b>Bladder</b>		
											BL 1 (67.) body	57/0	55/0



## BESA basic test

+++ : Indicator decline > 15 Skt.  
 ++ : Indicator decline 6-15 Skt.  
 + : Indicator decline 3-5 Skt.

T: Total inflammation (>89 Skt.)  
 P: Partial inflammation (70-89 Skt.)

D: Degeneration (< 50 Skt.)

Standard values: (50-70 Skt.)

										Element: bl - ly - ki - al			
0	10	20	30	40	50	60	70	80	90	100		Right	Left
										<b>Lymph</b>			
										Ly 1 (1.) Tons.Palat.	54/0	51/0	
										<b>Kidney</b>			
										Ki 1 (11.) pelvis	52/1	53/1	
										<b>Allergy</b>			
										Al 1 (1.) Lower body	51/2	60/1	

										Element: ga - jd - li - gd			
0	10	20	30	40	50	60	70	80	90	100		Right	Left
										<b>Gall</b>			
										Ga 1 (44.) Duct.choled./hep.	52/1	58/1	
										<b>Joint deg.</b>			
										Jd 1 (1.) lower extremities	55/1	53/1	
										<b>Liver</b>			
										Li 1 (1.) Central veins	53/0	50/0	
										<b>Greasy deg.</b>			
										Gd 1 (1.) Abdomen	57/1	59/0	

										Element: he - si			
0	10	20	30	40	50	60	70	80	90	100		Right	Left
										<b>Heart</b>			
										He 1 (9.) Pulm.sm./Aortic valves	52/1	54/0	
										<b>Small intestine</b>			
										Si 1 (1.) Ileum	54/1	57/0	

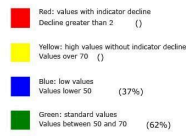
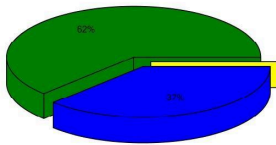
										Element: bc - 3e			
0	10	20	30	40	50	60	70	80	90	100		Right	Left
										<b>Blood circulation</b>			
										Bc 1 (9.) SMP Arteries	55/0	51/1	
										<b>Endocrine</b>			
										3e 1 (1.) Gonads/NNI	53/0	54/0	



## All BESA tests at a glance

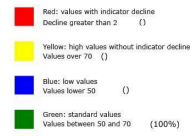
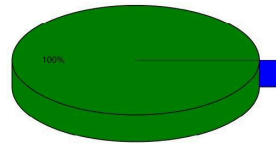
### Proband 7 EG

Overview of BESA measuring



BESA-Basic-Testing BEFORE

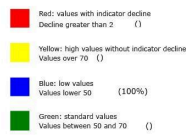
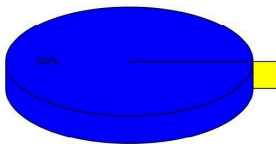
Overview of BESA measuring



BESA-Testing AFTER with test objekt

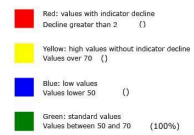
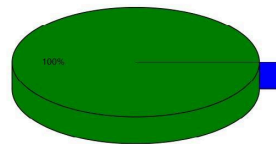
### Proband 8 EG

Overview of BESA measuring



BESA-Basic-Testing BEFORE

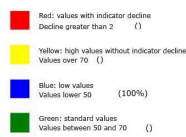
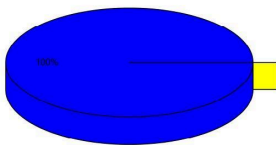
Overview of BESA measuring



BESA-Testing AFTER with test objekt

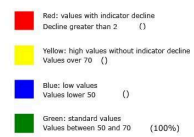
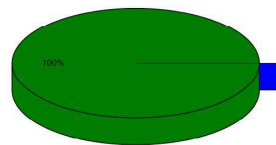
### Proband 9-P17 EG

Overview of BESA measuring



BESA-Basic-Testing BEFORE

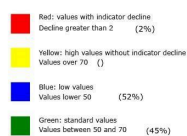
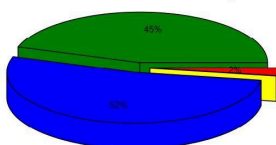
Overview of BESA measuring



BESA-Testing AFTER with test objekt

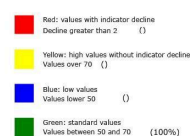
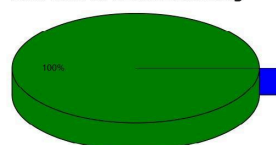
### Proband 10-P14 EG

Overview of BESA measuring



BESA-Basic-Testing BEFORE

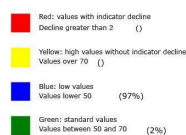
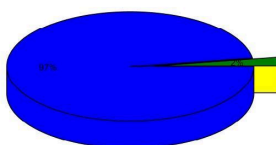
Overview of BESA measuring



BESA-Testing AFTER with test objekt

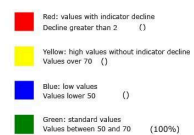
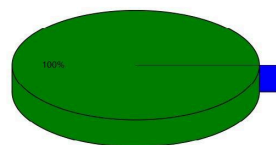
### Proband 11-P19 EG

Overview of BESA measuring



BESA-Basic-Testing BEFORE

Overview of BESA measuring

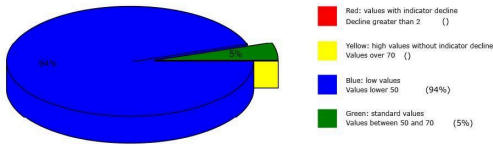


BESA-Testing AFTER with test objekt

### Proband 12-P24 EG-QV

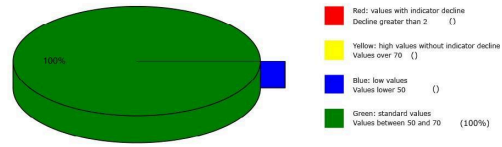


Overview of BESA measuring



BESA-Basic-Testing BEFORE

Overview of BESA measuring



BESA-Testing AFTER with test object

## General information on the test result

Humans are a kind of receiving antenna for environmental information. This is because human life is fundamentally and exclusively dependent on environmental information. Our organism is biologically very sensitive where natural information (fields) is located or where this natural information is subject to interactions and fluctuations. For this reason, detected informative interference fields are biologically highly relevant. Any reduction or conversion of these interference fields (ideally to 100 percent) is biologically very important, often even vital. These information burdens from our environment are only compatible with life if they can be readjusted to a natural fluctuation tolerance. Disruptions, problems, blockages and disharmonies in the human biological control loop are caused by such disruptive toxic information influences.

**Neutralizing or harmonizing effects were demonstrated in this detailed project P77 2.2 to determine the effect of the “Pain Reconciliation Frequency”.** The “Pain Reconciliation Frequency” was able to neutralize the biologically detrimental effects and effects of interference fields observed in the test subjects.

**This project proves the significant ability of the “Pain Reconciliation Frequency” to neutralize and harmonize the stress factors tested in this detailed project P77 2.2 and to transform them into biological life-promoting qualities.**

## Authorized Summary

The BESA tests carried out by IFVBESA on the energetic and physical effectiveness of the test object have clearly shown that it is able to neutralize or harmonize biologically significant stress factors in relation to the meridians or acupuncture points of the test person.

The bioenergetic system analysis was used to analyze and systemically test the effect of the above-mentioned stress factors on the test subjects, their meridian system and their energy-informative biological control circuits at the energy-informative level. The BESA tests BEFORE - AFTER show significant changes at the tested acupuncture points of the subjects' meridian system. The measurement data and their key figures impressively confirm the stresses that arise on the human organism on the one hand and illustrate how the deregulating energies are transformed into biocompatible energies after application of the test object on the other.



From a holistic perspective, it can be assumed that the positive effect on the test subjects also occurs in other people.

The fact that the positive influence of the test object is actually possible with high precision is clearly demonstrated by this test using the BESA BEFORE-AFTER comparison. All measured values improved significantly from the mostly 100% blue measuring range to the mostly 50-second green range (scale value), i.e. the range of optimal measured values.

This means that optimal regulation dynamics have taken place.

In terms of the IFVBESA, we can clearly speak of an optimal, significant improvement in the body's own energy situation

### **Result:**

The test subjects were brought into contact with the test object during the BESA AFTER tests. In contrast to the BEFORE tests, in which the test object was not used, consistently positive measurement results were recorded, indicating that neutralization or harmonization had taken place.

The regulatory dynamics developed into an optimal effective range.

By demonstrating the energy-informative effectiveness of the test object in this detailed project P77 2.2, the requirements for obtaining a BESA seal of approval from the International Association for BESA were met.