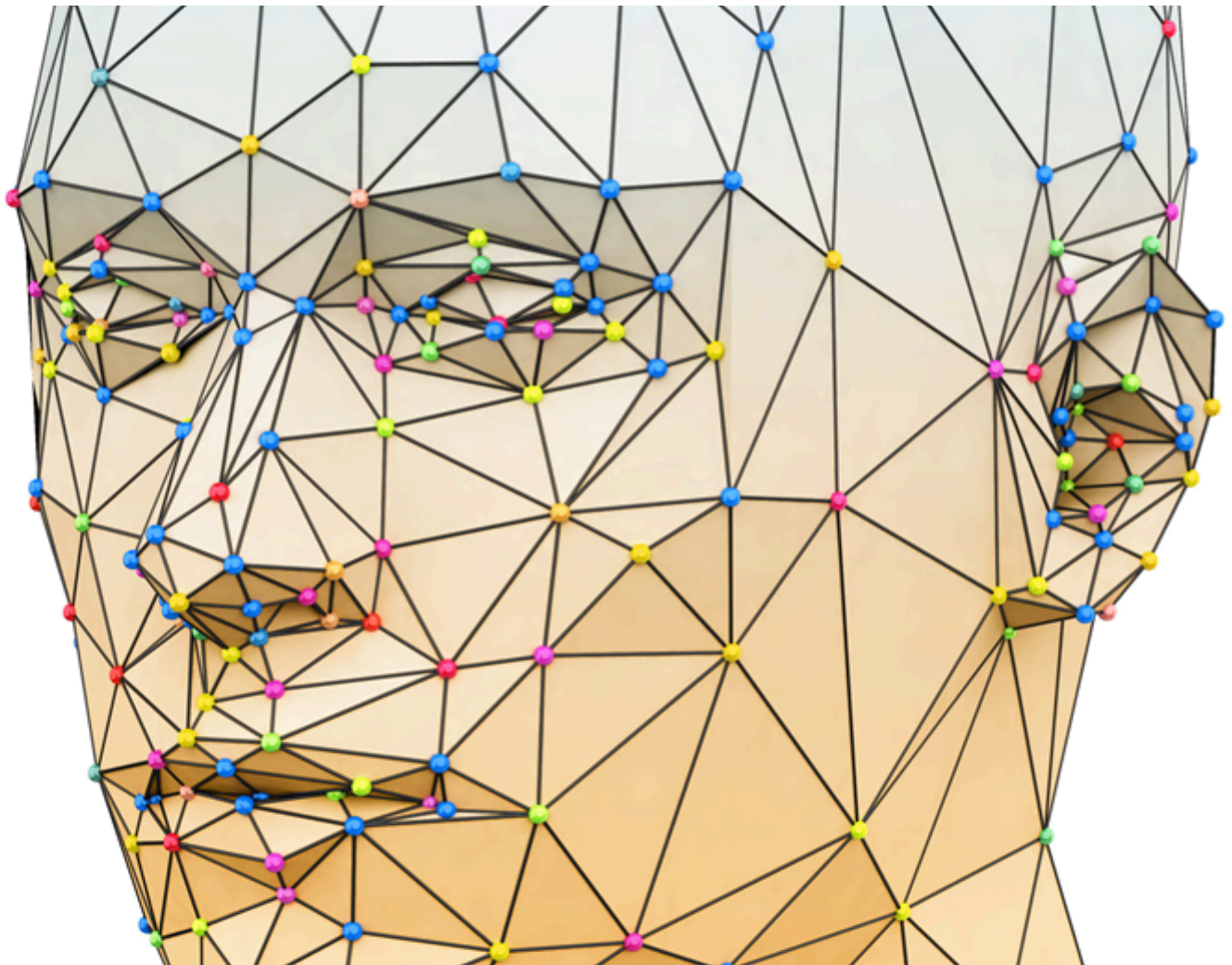




Internationaler Fachverband für BESA ■ ZVR Nr. 975047937
Hauptstraße 1, A 4861 Kammer-Schörfling am Attersee ■ Österreich - AUSTRIA
Tel.: 0043 - (0)664-73152899 | E-MAIL: info@ifvbesa.at
Website: www.ifvbesa.at oder www.besa-guetesiegel.com

IFVESA

Information is crucial



P77 1.2 BESA-Detail Project

H.E.A.L.® 360 Frequency

Leela Quantum Tech, LLC



Internationaler Fachverband für BESA ■ ZVR Nr. 975047937
Hauptstraße 1, A 4861 Kammer-Schörfling am Attersee ■ Österreich - AUSTRIA
Tel.: 0043 - (0)664-73152899 | E-MAIL: info@ifvbesa.at
Website: www.ifvbesa.at oder www.besa-guetesiegel.com

Project P77 1.2

Experimental group

Bioenergy-informative system analysis
in the context of a BESA seal of approval
on the effectiveness of the product
„H.E.A.L.[®] 360 Frequency“
on different test subjects



Client

company Leela Quantum Tech, LLC
Attn: Eleonora Goldenberg
1421 LUISA STREET, STE G
SANTA FEE, NM 87505
USA

Project participants:

Project management: Wolfgang Hans Albrecht, President of the International BESA Association

Test Person: Eva Schmidt, Vicepresidentin of the International BESA Association

Test subjects: A total of 24 subjects in an exploratory research project, which is double-blind, randomized and partly quantum-entangled.
The P77 1.0 project consists of 4 detailed projects from P77 1.1 to P77 1.4.

P77 1.1: 6 subjects from P1 to P6

P77 1.2: **6 subjects from P7 to P12**

P77 1.3: 6 subjects from P13 to P18

P77 1.4: 6 subjects from P19 to P24

Project Location: At the headquarters of the International Association of BESA
Main street 1
A 4861 Kammer/Schörfling am Attersee - AUSTRIA

Date: 01.05.2024 to 06.06.2024

Project duration: 37 days



Contents

BESA- legend for interpreting the BESA measurement results	5
Basics of research project creation P77 1.2	6
Project - Design:	7
Proband	8
Research support services of the IFVBESA-BESA reference tests	9
Research project description	10
Test procedure	12
All BESA tests at a glance	49
General information on the test result	50
Authorized Summary	50

Important notes:

The client has the right to utilize this project report. Irrespective of this, this report is the intellectual property of IFVBESA as the contractor. The contractor is entitled to use this project report for other purposes, provided that this does not violate the client's data protection or confidentiality.

On the other hand, the project report, with the exception of the “authorized abridged version”, may not be changed or abridged without the consent of IFVBESA.

The assignment for this project relates to bioenergetically measurable values and their interpretation in accordance with the guidelines of BESA and the IFVBESA.

Maintaining the quality of the tested products and their regular monitoring is the task and responsibility of the client.



Investigation of the manufacture, mechanism of action or interpretation of the client's products vis-à-vis third parties is not the responsibility or task of the contractor. Video recordings may only be made with the permission of IFVBESA.

BESA- legend for interpreting the BESA measurement results

The measured value of 50 at the tested meridian represents an optimal energetic state in this organ or its higher levels.

Also measured values in the range of 50 to max. 70 still count as a neutral and balanced energetic status. The organism is able to regulate irritations of the system (wrong environmental signals) very well.

Measured values above 70 to 100 represent the inflammatory range or a so-called energy surplus as a reaction to the irritations of the system by corresponding environmental signals. After reaching the maximum values, the energy state tips into the degenerative (blue) range.

Measured values from below 50 to around 0 represent the so-called degenerative measuring range or a lack of energy as a reaction to the stimulation of the system by corresponding environmental signals.

Measured values represented by a so-called pointer drop of more than 3 scale lines indicate total deregulation.

The influence of certain environmental signals then leads to such strong system overloads, which can only be harmonized by corresponding new signals.

The orange measured values represent a resonance of the tested substances (electronic honeycomb contents) in the respective called bioenergy-informative control circuits as well as in its subordinate or superordinate structures.

BESA key figures:

up 0,79 very deep energetic regulation disorder (SSD) energy deficiency
0,8 to 1,19 strong energetic regulation disorder (SD) degeneration/lack of energy
1,2 to 1,59 energetic regulation disorder (D) degeneration/energy deficiency
1,6 to 1,99 degenerative transition (DÜ)

2,0 to 2,39 optimale regulation (OR)
2,4 to 2,79 in the regulation (R)

2,8 to 3,19 partial inflammation = regional energy excess (PE)
from 3,2 total inflammation = strong general energy surplus (TE)



Basics of research project creation P77 1.2

Analysis was commissioned by the company Leela Quantum Tech, LLC to test the effect of the test object, the “ H.E.A.L.® 360 Frequency” using bioenergy informative systems analysis (BESA) on the relevant test subjects and to demonstrate its effect on the test subjects.

The test was carried out independently of the subjective perception of all test subjects. The “ H.E.A.L.® 360 Frequency” was presented as follows, according to the information provided by the contracting company:

Description of the mode of action of the test object “ Leela Quantum H.E.A.L Plus Frequency Card” by the client:

Description of the mode of action of the test object “ H.E.A.L.® 360 Frequency” by the client: The Leela Quantum Frequency Cards fit comfortably in your pocket or purse. They are charged with powerful, positive frequencies. By working with world-renowned healers, we can exclusively offer you the purest and most effective frequencies for a wide range of needs. Whether you are looking for cleansing, balancing or manifestation, our frequency cards offer unlimited possibilities.

The modern world exposes us to numerous environmental influences that can tire our bodies and minds. We can hardly escape these influences. They are in the air, in the water and in our food. Electrosmog is also omnipresent in our everyday lives. It is therefore all the more important to support the body and mind in maintaining balance and to harmonize and neutralize negative influences, frequencies and radiation. At LeelaQ, it is our goal and concern that you can fully develop your natural strength independently of these influences and build up a positive energy field in order to feel good all around and permanently.

Throughout the day, every minute, you will experience vitalizing quantum energy and supportive, positive frequencies through our products, which strengthen your performance and bring peace to your thoughts.

This is exactly what the “ H.E.A.L.® 360 Frequency” does to a high degree.

The technology of the “ H.E.A.L.® 360 Frequency” is a tool that generates a concentrated, informative frequency field on the physical, mental and spiritual levels, thereby triggering effective processes on all levels.

This field is therefore able to bring the primal information into balance in terms of energy information, i.e. to restore the primal vibration (primal frequency - primal characters). According to researchers, these frequencies are among the most innovative developments in the field of natural health. This technology thus combines science and effective frequencies with the aim of delivering life-enhancing energy to the environment required and used by the organism.

Direct effect on the energy-informative field



The concept of the “H.E.A.L.® 360 Frequency” is to stimulate certain physical, mental and spiritual regulation processes (self-healing) in order to harmonize or neutralize disturbances or disharmonies in the control circuits of the energy-informative field of the user or person and thus to replace negative, blocking or deregulating states on the physical level with positive states. Due to its mode of operation, the “H.E.A.L.® 360 Frequency” has a valuable and effective area of application.

Project - Design:

This project is an explorative study in which the harmonizing effect of the test object, the “H.E.A.L.® 360 Frequency”, on test subjects is investigated. The design of this project contains modern, quantum-physical elements and creates new standards in the field of research into quantum-technological products and their modes of action.

The explorative research approach of the IFVBESA

New knowledge, new insights and new ideas are the breeding ground on which science and the technologies of the future thrive. The explorative approach of most of our research projects is the seed for the information medicine or quantum technology of tomorrow. In exploratory study design, we present a methodical research approach in which research areas or research questions are investigated that have not yet been investigated. This demonstrates both the development and the potential of novel approaches for research into future technologies.

The concrete and feasible application reference of the international professional association for BESA reduces the otherwise high research risk that often prevents companies and research institutes from dealing with topics at a very early stage of development.

This project is double-blind, randomized and partly quantum-entangled.

Double-blind means that neither the subject nor the tester knows who will be confronted with the test object and who with the placebo. This is only possible through random group allocation (randomization). The aim of blinding is to evaluate the results as objectively as possible.

Quantum entanglement:

Quantum entanglement is a quantum mechanical phenomenon. Two or more entangled particles can no longer be described as individual particles with defined states, but only the overall system as such.

In the current case, this means that the photographs used form an indelible, energy-informative image of the representation in the photograph (i.e. an energy-informative space). In other words, in relation to this project, one can say that the energy information contained in the photographs represents a real extract from the quantum field. The photographs were tested and evaluated in the IFVBESA laboratory using a surrogate BESA.



This means that all subsequent BESA tests of the project, which are recorded by means of photographs, subsequently take place under the IFVBESA laboratory conditions already mentioned above.

What does surrogate mean: This is a substitute person who stands in for the respective test person in the case of a quantum entangled BESA test or application of the test object.

Placebo (empty object)

In this case, unlike the test object, the placebo is an empty object that does not contain any effective frequencies. The test object cannot be distinguished from the empty object (placebo) either for the test subjects or for the test persons.

Proband

Proband in general:

In addition to the test object already described, 24 test subjects form the framework for this research project. Additional test subjects will be integrated in parallel as substitutes for possible unexpected absences.

The test subjects were informed in advance of this project about the general procedures for this project and their function as test subjects.

General means that neither the subjects nor the test persons know what the background of the series of measurements is. The aim of this type of blinding is to obtain as objective an evaluation of the results as possible in order to rule out so-called placebo effects.

The test subjects are anonymously assigned a number from P1 to P24. The test subjects are also assigned anonymously to either the control group or the experimental group.

The different appointments made with the test subjects for the BESA tests can lead to the numbers of the test subjects from P1 to P24 appearing differently in both the experimental group and the control group. For this reason, in the statistical analysis, the numbers of subjects P1 to P24 are additionally numbered from 1 to 24 (list of the experimental group and the control group)

For those test subjects who did not have the opportunity to take part in the BESA tests live during the scheduled time period, photos were taken for the quantum entangled BESA tests. The photos were printed on high-quality photo paper, which is necessary for this form of BESA testing. These test subjects are also included in the statistics with QV (quantum entangled).

The BESA tests are carried out for each test person as follows:

1. at the beginning of the project to establish a so-called status (actual situation).
2. in the 2nd part of the project after several minutes of exposure to the test object or the blank object (placebo).

Brief description of the participating subjects:



Experimental group

Respondent 1 P1	66 years old, female, no CI, various minor stress factors
Respondent 2 P2	62 years, female, no CI, various minor stress factors
Respondent 3 P7	65 years, female, no CI, no known stress factors, stress
Proband P4 P11	64 years, female, CI, fluid retention in both legs, dizziness, tachycardia
Respondent P5 P12	61 years, male, no CI, various minor stress factors
Proband P6 P13 QV	60 years, male, CI, severely enlarged prostate
Proband P7 P14 QV	21 years, female, CI, feels lack of energy, slightly overweight
Respondent P8 P15 QV restlessly,	59 years old, female, no CI, feels lack of energy, sleeps inner nervousness
Respondent P9 P16 QV	54 years, female, no CI, mental disorders, feels lack of energy
Respondent P10 17 QV	39 years, male, CI, sometimes lacking energy, stress
Respondent P11 P22	66 years, female, no CI, no conscious stress factors, sometimes lacks energy
Proband P12 P23	68 years, male, no CI, low energy, sometimes dizziness, heart surgery, stomach surgery

Control group

Proband P13 P3	69 years, male, no CI, diabetes 2, retinal vein occlusion right eye blind, facial nerve palsy right, gastric perforation
Proband P14 P4	29 years, male, no CI, no conscious stress
Proband P15 P5	25 years, female, no CI, no conscious stress factors
Respondent P16 P6	37 years, male, no CI, no conscious stress factors
Respondent P17 P8	63 years, female, no CI, various minor stress factors
Respondent P18 P9 QV	76 years, male, CI, severe pain all over the body, dizziness
Respondent P19 P10 QV	5 years, male, no CI, restless, sometimes aggressive
Respondent P20 P18 QV	58, female, no CI, various minor stress factors
Respondent P21 P19 QV	37 years, female, no CI, no conscious stress factors
Respondent P22 P20 QV	61 years, female, no CI, various minor stress factors
Respondent P23 P21 QV	70 years, male, no CI, gastrointestinal complaints, digestive problems, rheumatism
Respondent P24 P24	56 years, female, no CI, various minor stress factors

Research support services of the IFVBESA-BESA reference tests

The P77 1.0 research project is specifically concerned with demonstrating the effect of the test object on various stress factors and pain and health-related deregulations of the participating test subjects.



The aim is to check whether the test object can neutralize the possibly negative representations from the VORHER BESA tests or the perception of the stress factors or their possibly perceived disruptive effect on the organism.

The client assumes that by using the test object, the stress factors mentioned by the test persons or the deregulations in the energy-informative system made visible by BESA can be harmonized in an energy-informative and biological way and their vibrations can be transformed into positive, life-promoting vibrations. The test object should therefore be practically and factually suitable for bringing the possibly tested deficiency states of the test subjects back into the physiological norm. This is being tested on the test subjects in this BESA project.

The test object is tested according to the client's requirements within the framework of the applicable IFVBESA conditions for awarding quality seals. Depending on the significance of the test results, seals of approval are awarded in 3 categories, taking into account all tests of a project.

The client and developer of the test object assumes that it is able to compensate for the causes of the stress factors and deregulations in the energy-informative system of the test subjects and to replace the associated negative states with positive states.

The following commissioned BESA tests on the test subjects are intended to determine whether the test object is capable of doing this.

Research project description

Research questions

1. does the energy-informative status, as analyzed in the BESA test, change after the test subjects are exposed to the test object live and partly quantum entangled over several minutes?
2. is the effect of the test object able to harmonize or improve a possibly deregulated, disadvantageous situation in the energy-informative system of the test subjects?

The purpose of the tests for this detailed research project P77 1.2 is to prove the functionality of the test object by test results that are to be achieved by bringing the test subjects into contact with the test object or blank object/placebo in BEFORE tests (initial value or status) and in AFTER tests.

- The BESA BEFORE tests are carried out without using the test object/blank object
- The BESA AFTER tests are carried out during the confrontation of the test subjects with the test object/blank object.

BESA 1 testing BEFORE as status



The person responsible for the test carries out a basic BESA test on each test person. All BESA tests are carried out at the so-called TING points (40 acupuncture nail fold points on the fingers and toes).

The aim is always to create a basic test (status) for each test person as a representation of the overall energy-informative starting situation for all subsequent BESA tests in this detailed project.

Result: The measured values then indicate a corresponding behavior or image of the energy-informative system measured via the meridian end points (acupuncture points) and its subordinate levels such as organs or organ systems.

BESA 2 testing AFTER during the confrontation with the test object or the placebo

In the further course of the BESA test, the test object (or the blank object/placebo - control group) is introduced into the measuring circuit and tested on the test person. The test object or blank object/placebo is thus in direct confrontation with the respective test person. All BESA tests are again carried out at the TING points (40 nail fold points on the fingers and toes) of the test subjects.

The aim for each subject is always to find out how the subject's energy-informative system reacts after confrontation with the test object or empty object/placebo in the measuring circle. What changes can be seen compared to the BESA 1 test BEFORE due to the influence of the test object or the empty object/placebo?

Result: The measurement results show a corresponding change in relation to the test object or the blank object/placebo. This can range from a possible deterioration to a significant improvement in the acupuncture points or the energy-informative state and the underlying levels such as the test person's organs.

The question for the BESA AFTER tests is: "Is the test object suitable and able to represent the perceived stressful effects from the energy-informative field of the test subjects in a regulation or to bring the recognized stresses from the BESA BEFORE tests into a regulative - harmonic state via the possible process of quantum entanglement?"

The appropriately designed tests should provide information on this by comparing the BEFORE tests without the test object with the test results of the BESA AFTER tests to be carried out using the test object or the empty object/placebo.

General information on the information transfer of the test object

Information is transferred from the hyperspace of the test object to the hyperspace of biological objects (humans, animals, plants). From there, the information reaches the reference space or energy space via so-called interaction channels from the background field. This is an amalgamation of all organs and forms of energy in the biological object. The information of the program can be dynamically implemented there and thus change current



states. The changes can manifest themselves in the form of neutralization or harmonization of disturbances, the resolution of problems, blockages and disharmonies.

Conditions:

The BESA tests were carried out partly quantum entangled via the corresponding photographs and partly live in the IFVBESA premises under laboratory conditions, at room temperature 20°Celsius, on a natural wooden floor. Before the BESA Basic Status test, the test person is deswitched (made fit for testing) or the test possibilities are questioned.

Test procedure - procedure and specifications for implementation

1. the BESA BEFORE tests on at least 24 test persons serve to determine the ACTUAL state - initial value (no exposure) of the test persons outside the frequency range of the test object or empty object/placebo. The results are determined exactly according to the specifications of the IFVBESA and documented using the corresponding graphs.
2. the BESA AFTER tests are carried out after at least 3 minutes of unconscious exposure to the frequencies of the test object (experimental group) or unconscious exposure to the blank object/placebo (control group). The procedure is as already mentioned in the research project description.

The aim of the development team is to determine whether the test object is suitable for harmonizing the deregulations resulting from toxic stress factors in the bioenergy-informative system of the test subjects, as noted in the product descripti.

Test procedure

BESA 1 BASIC testing as bioenergy-informative status:

In the first step, a bioenergy-informative basic test (bioenergy-informative status) is carried out at the meridian end points (TING points) of the test person.

BESA 2 Testing of the test object or the blank object/placebo against the test subjects

In this BESA test, all test subjects are confronted with the test object (experimental group) or the blank object/placebo (control group).

Now the question is: How does the energy-informative system of the respective test person react within the effective range of the test object or empty object/placebo?



Proband 7 P14-EG BESA 1 Testing-BEFORE

BESA 1 Testing BASIC BEFORE as status

BESA test evaluation P77 1.2
from **14-05-2024 at 13:33 – 13:40** (7 minutes) Page 14 to 16

Result:

The measured values indicated a strongly degenerative picture of the subject's energy-informative system measured via the meridian end points (acupuncture points).

95 % in the blue area

2% in the red area

2 % in the green area

1% in the yellow transition area

Conclusion:

As the BESA graphs and the pie chart show, almost 97% of the measurement results were in the blue and partly also in the red range (2%). The red readings in particular indicate total deregulation (pathological blockage) in this control loop. These readings require a strong regulatory energy-informative impulse from outside.

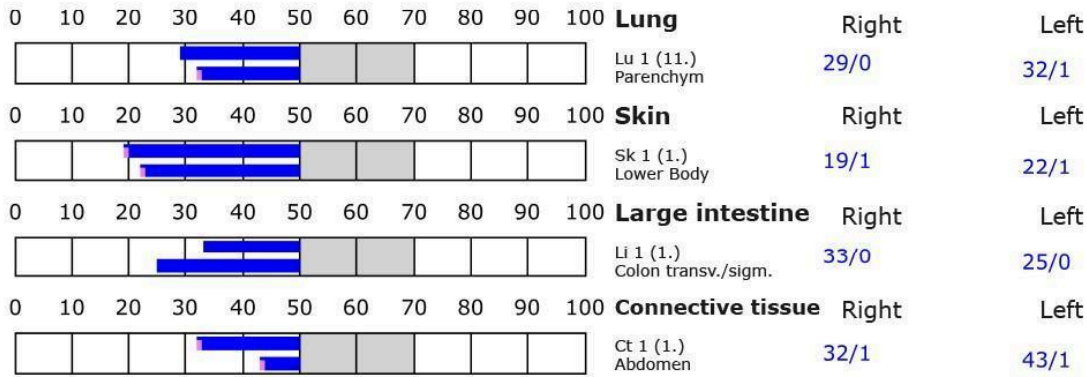
This means that the subject is in a strong or deep energy-informative degeneration. In other words, one could also speak of a strongly weakened overall energy-informative state.



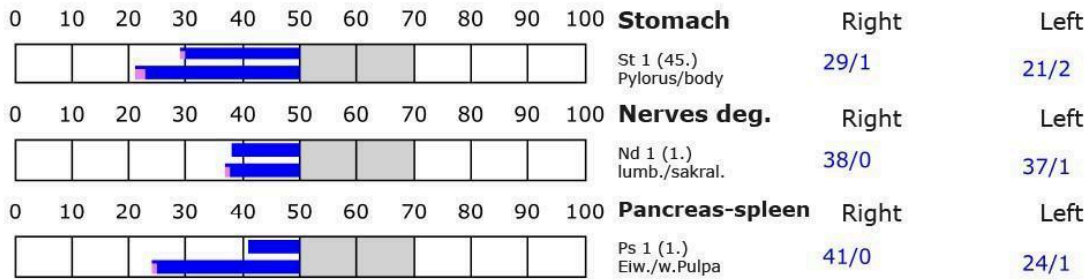
BESA basic test

+++ : Indicator decline > 15 Skt. T: Total inflammation (>89 Skt.) D: Degeneration (< 50 Skt.) Standard values: (50-70 Skt.)
 ++ : Indicator decline 6-15 Skt. P: Partial inflammation (70-89 Skt.)
 + : Indicator decline 3-5 Skt.

Element: lu - sk - li - ct



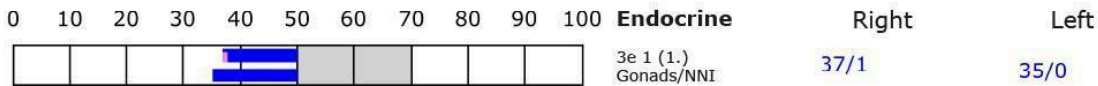
Element: st - nd - ps - od



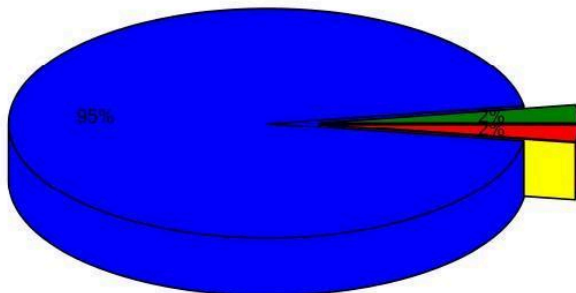
BESA basic test

+++ : Indicator decline > 15 Skt. T: Total inflammation (>89 Skt.) D: Degeneration (< 50 Skt.) Standard values: (50-70 Skt.)
 ++ : Indicator decline 6-15 Skt. P: Partial inflammation (70-89 Skt.)
 + : Indicator decline 3-5 Skt.

Element: bc - 3e



Overview of BESA measuring



- Red: values with indicator decline
Decline greater than 2 (2%)
- Yellow: high values without indicator decline
Values over 70 (3%)
- Blue: low values
Values lower 50 (95%)
- Green: standard values
Values between 50 and 70 (2%)



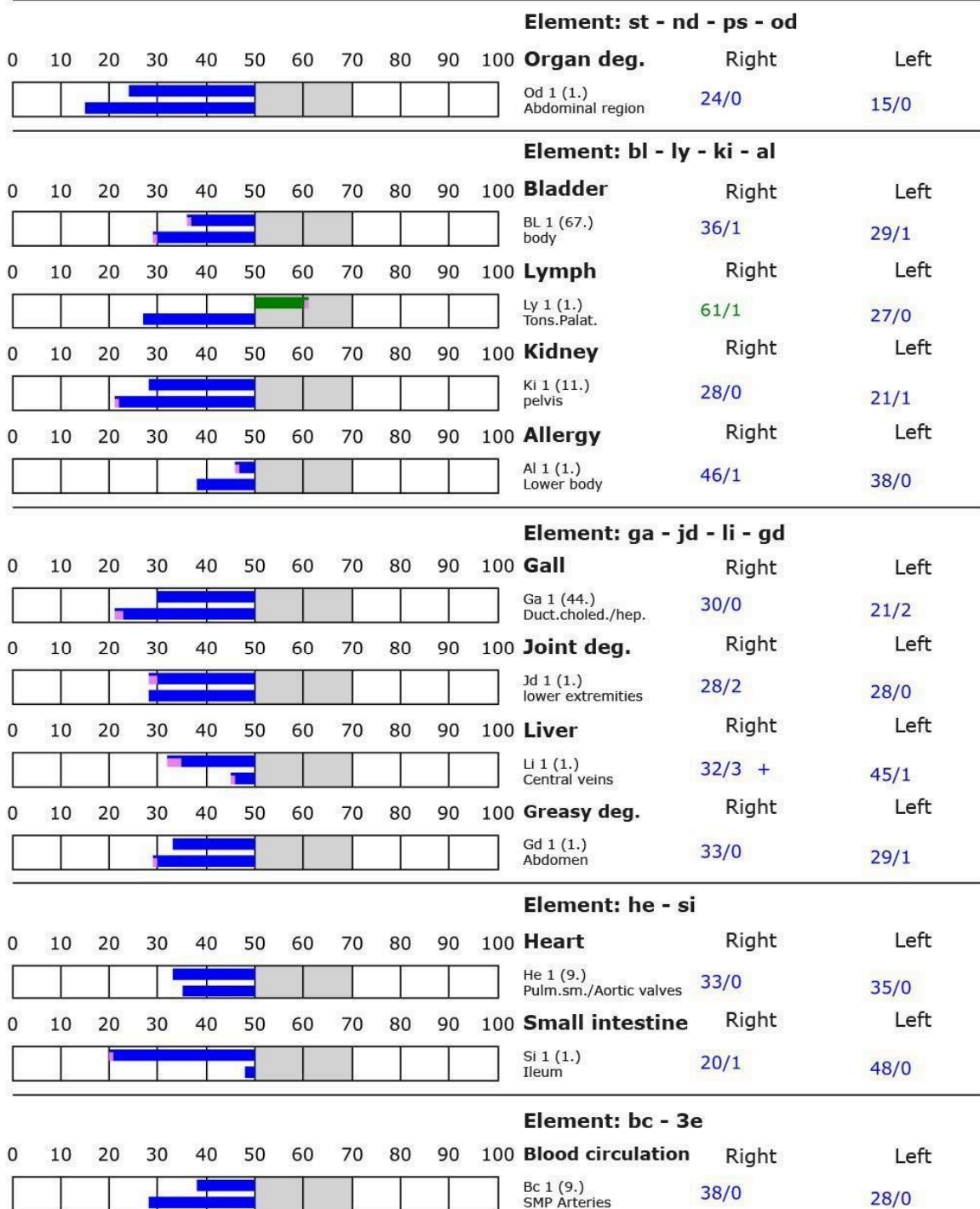
BESA basic test

+++ : Indicator decline > 15 Skt.
 ++ : Indicator decline 6-15 Skt.
 + : Indicator decline 3-5 Skt.

T: Total inflammation (>89 Skt.)
 P: Partial inflammation (70-89 Skt.)

D: Degeneration (< 50 Skt.)

Standard values: (50-70 Skt.)





BESA 2 Testing AFTER

BESA 2 Testing AFTER during in confrontation with the test object

BESA test evaluation P77 1.2
from **01-06-2024 at 22:01 – 22:11** (4 minutes) Page 17 to 19

Result:

The measurement result showed a clear and therefore significant improvement at all acupuncture points and in the energy-informative state of the test person.

100 % in the green area

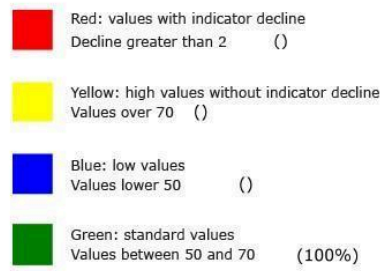
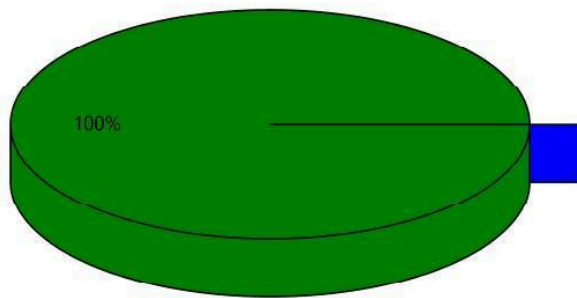
Conclusion:

As the following BESA graphs show, all measured values are in the green, optimal range.

The test object, which was tested on the subject on an energy-informative basis, shows a harmonizing effect on the energy-informative field.



Overview of BESA measuring





BESA basic test

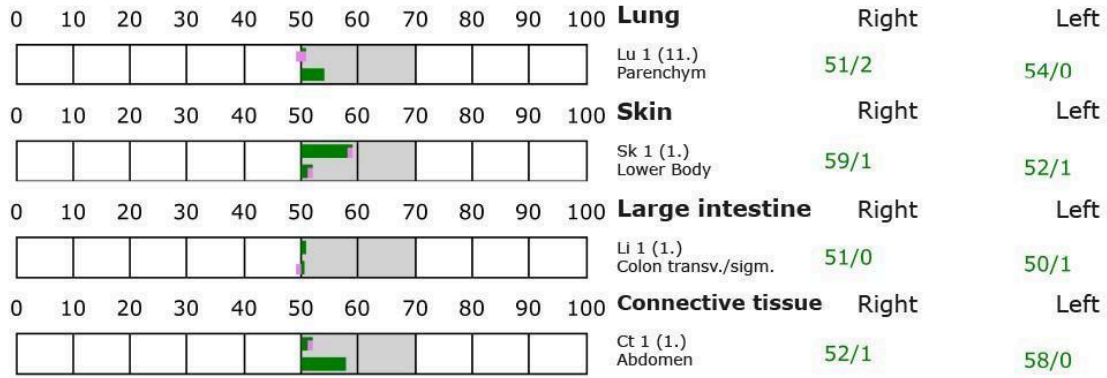
+++ : Indicator decline > 15 Skt.
 ++ : Indicator decline 6-15 Skt.
 + : Indicator decline 3-5 Skt.

T: Total inflammation (>89 Skt.)
 P: Partial inflammation (70-89 Skt.)

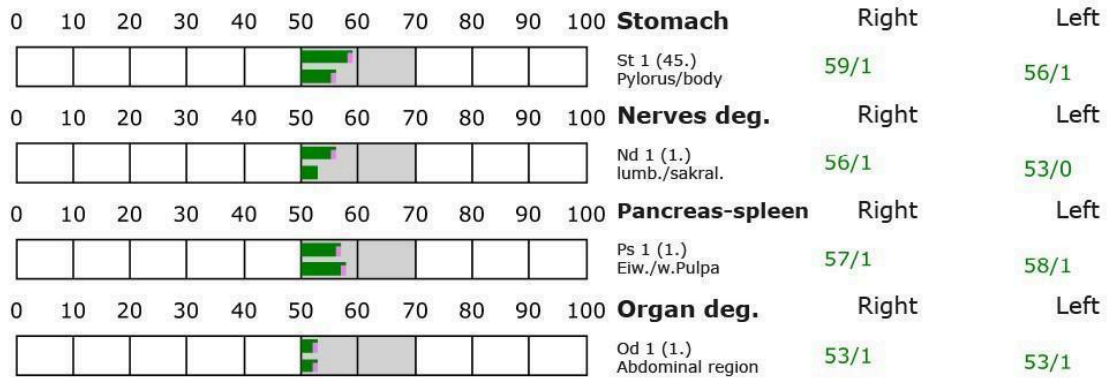
D: Degeneration (< 50 Skt.)

Standard values: (50-70 Skt.)

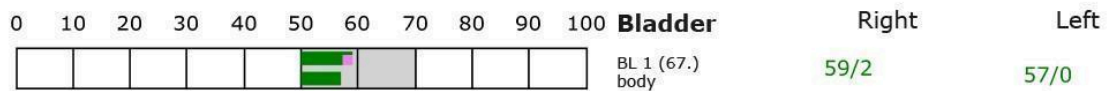
Element: lu - sk - li - ct



Element: st - nd - ps - od



Element: bl - ly - ki - al





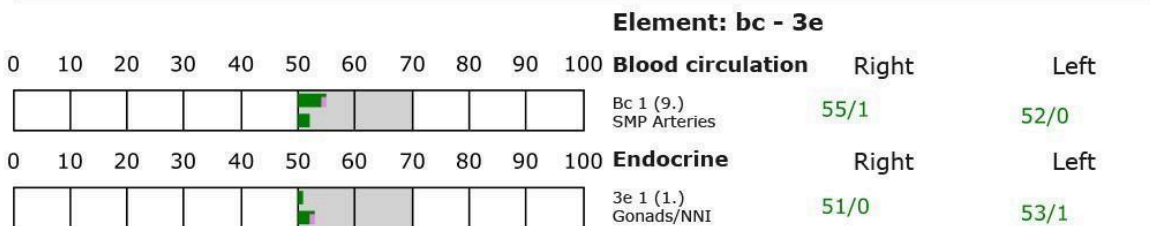
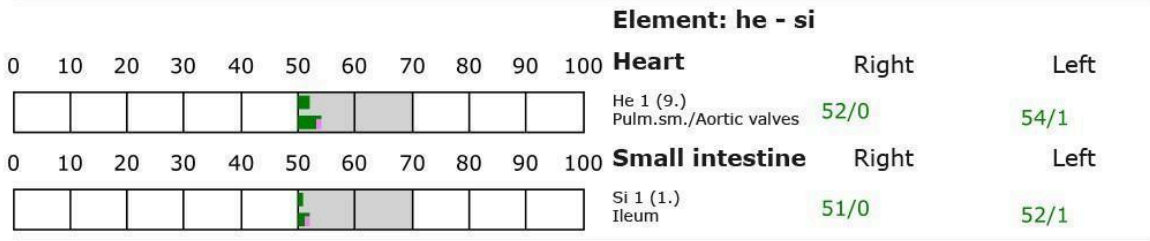
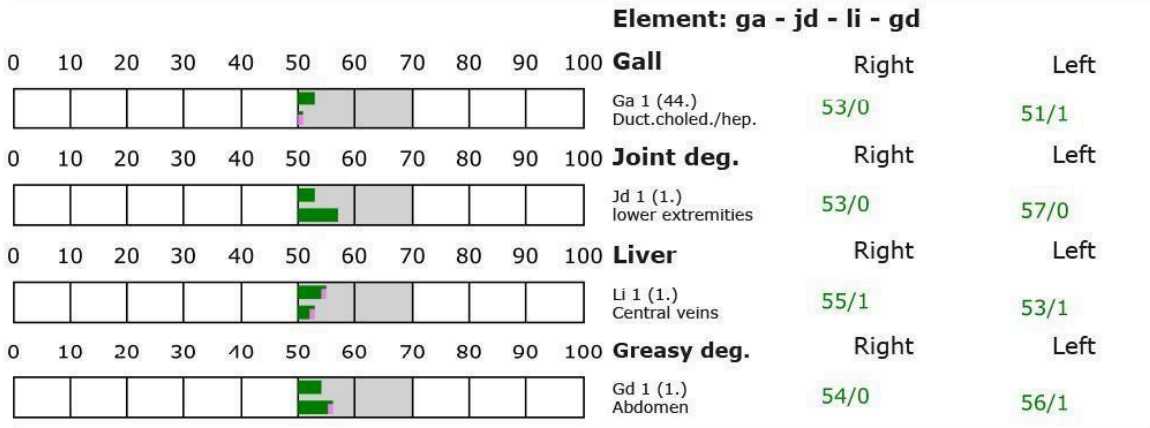
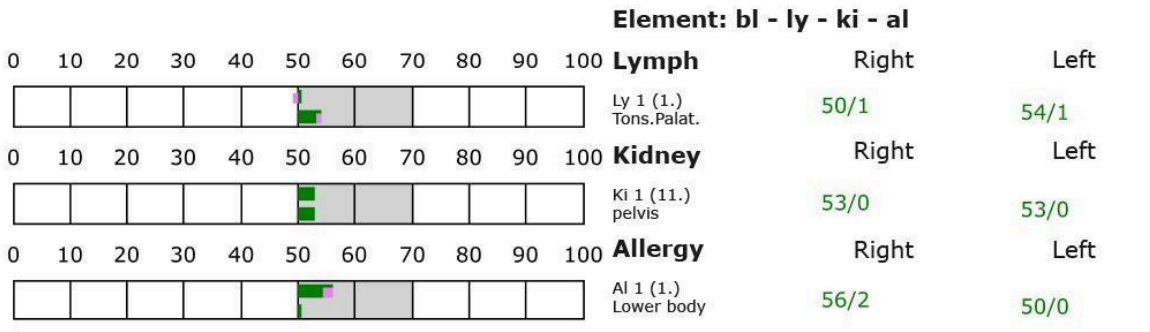
BESA basic test

+++ : Indicator decline > 15 Skt.
 ++ : Indicator decline 6-15 Skt.
 + : Indicator decline 3-5 Skt.

T: Total inflammation (>89 Skt.)
 P: Partial inflammation (70-89 Skt.)

D: Degeneration (< 50 Skt.)

Standard values: (50-70 Skt.)





Proband 8 P15-EG-QV BESA 1 Testing BASIC-BEFORE

BESA 1 Testing BASIC BEFORE quantum mentenglement as status

BESA test evaluation P77 1.2

from **28-05-2024 at 14:24 – 14:28** (4 minutes) Page 20 to 23

Result:

The measured values indicated a partially strongly degenerative picture of the energy-informative system measured via the meridian end points (acupuncture points). The measured values on the subject's energy system indicate a stressful overall energy-informative situation.

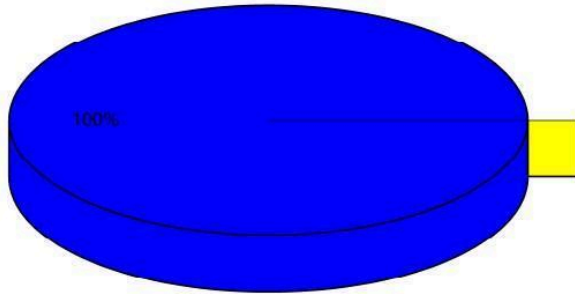
100 % in the blue area

Conclusion:

As the BESA graphs and the pie chart show, all measurement results were in the blue range. Many of the measured values were in the blue, degenerative range. In relation to the organs tested, this corresponds to a relatively severe energy deficiency. This means that the test person is in an energy-informative degeneration. In other words, one could also speak of a strongly weakened energy-informative overall condition, as the following BESA graphs show.



Overview of BESA measuring



- Red: values with indicator decline
Decline greater than 2 ()
- Yellow: high values without indicator decline
Values over 70 ()
- Blue: low values
Values lower 50 (100%)
- Green: standard values
Values between 50 and 70 ()

BESA basic test

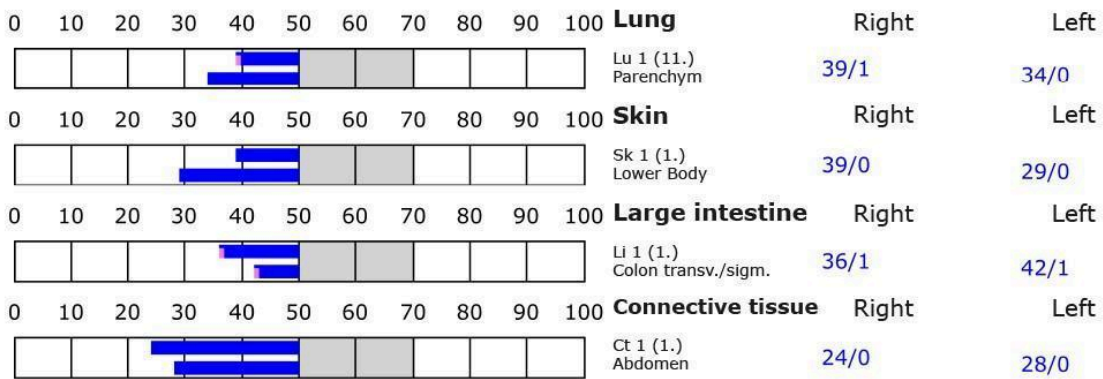
+++ : Indicator decline > 15 Skt.
 ++ : Indicator decline 6-15 Skt.
 + : Indicator decline 3-5 Skt.

T: Total inflammation (>89 Skt.)
 P: Partial inflammation (70-89 Skt.)

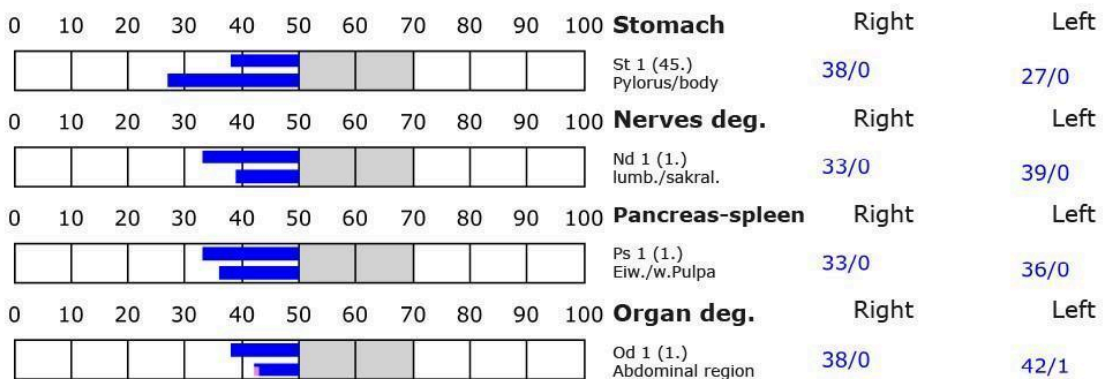
D: Degeneration (< 50 Skt.)

Standard values: (50-70 Skt.)

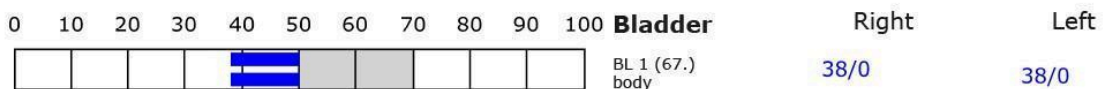
Element: lu - sk - li - ct



Element: st - nd - ps - od



Element: bl - ly - ki - al





BESA basic test

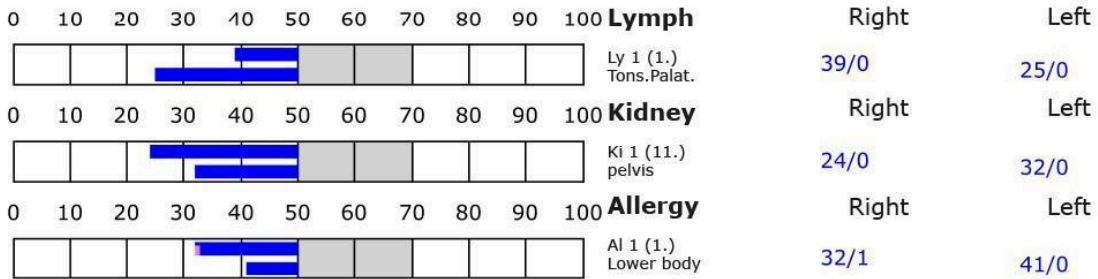
+++ : Indicator decline > 15 Skt.
 ++ : Indicator decline 6-15 Skt.
 + : Indicator decline 3-5 Skt.

T: Total inflammation (>89 Skt.)
 P: Partial inflammation (70-89 Skt.)

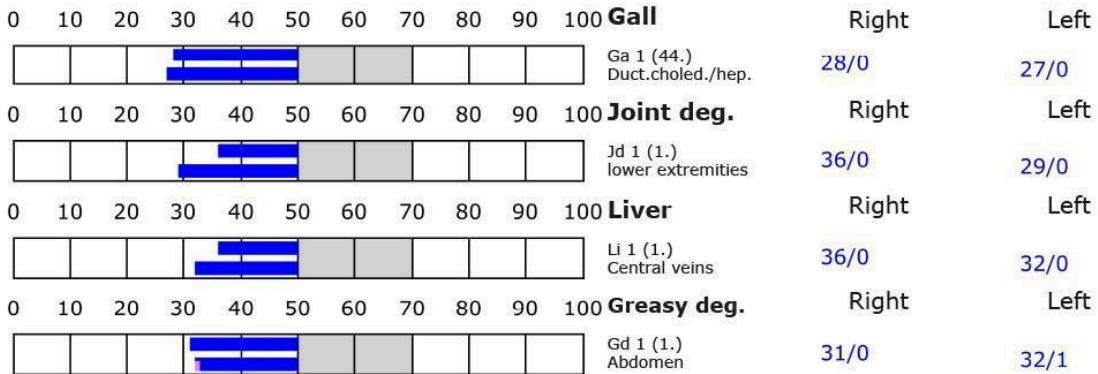
D: Degeneration (< 50 Skt.)

Standard values: (50-70 Skt.)

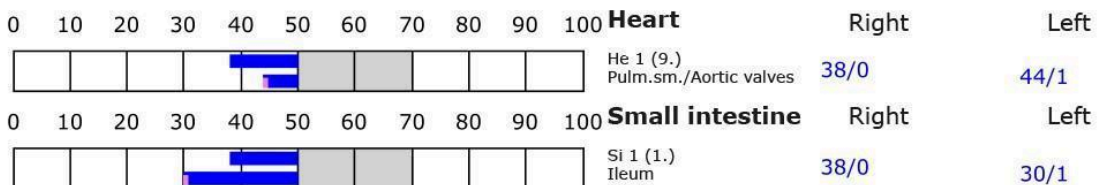
Element: bl - ly - ki - al



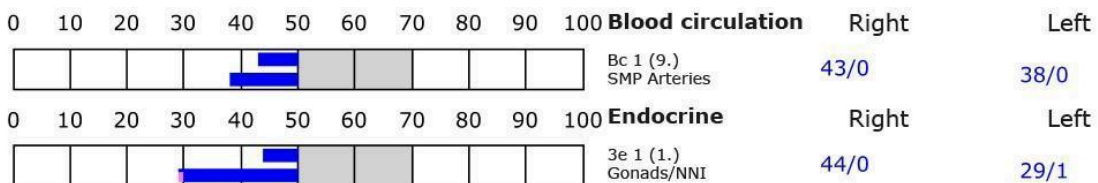
Element: ga - jd - li - gd



Element: he - si



Element: bc - 3e





BESA 2 Testing AFTER

BESA 2 Testing AFTER quantum entanglement during confrontation with the test object

BESA test evaluation P77 1.2

from **28.05 2024 at 14:31 – 14:35** (4 minutes) Page 23 to 26

Result:

The measurement result showed a clear and therefore significant improvement at all acupuncture points and in the energetic state of the test person.

100 % in the green area

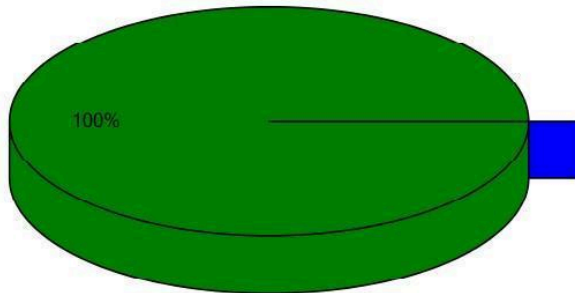
Conclusion:

As the following BESA graphs show, all measured values are in the green, optimal range. The test object, which was tested on the test person on an energy-informative basis, had a harmonizing effect on the energy-informative field. Viewed in depth, this means that the test object was even able to harmonize the strongly degenerative measured values from the BESA BEFORE test.

The subsequent comparisons of the BESA graphs confirm the changes or the improvement of the stressed acupuncture points on the subject's meridian system through the test object.



Overview of BESA measuring



- Red: values with indicator decline
Decline greater than 2 ()
- Yellow: high values without indicator decline
Values over 70 ()
- Blue: low values
Values lower 50 ()
- Green: standard values
Values between 50 and 70 (100%)

BESA basic test

- +++ : Indicator decline > 15 Skt.
- ++ : Indicator decline 6-15 Skt.
- + : Indicator decline 3-5 Skt.

T: Total inflammation (>89 Skt.)
 P: Partial inflammation (70-89 Skt.)

D: Degeneration (< 50 Skt.) Standard values: (50-70 Skt.)

Element: lu - sk - li - ct

0	10	20	30	40	50	60	70	80	90	100	Element	Right	Left
											Lung		
											Lu 1 (11.) Parenchym	53/0	51/1
											Skin		
											Sk 1 (1.) Lower Body	52/0	55/1
											Large intestine		
											Li 1 (1.) Colon transv./sigm.	61/2	53/0
											Connective tissue		
											Ct 1 (1.) Abdomen	53/1	53/1

Element: st - nd - ps - od

0	10	20	30	40	50	60	70	80	90	100	Element	Right	Left
											Stomach		
											St 1 (45.) Pylorus/body	57/1	55/1
											Nerves deg.		
											Nd 1 (1.) lumb./sakral.	51/1	51/1
											Pancreas-spleen		
											Ps 1 (1.) Eiw./w.Pulpa	53/1	51/0
											Organ deg.		
											Od 1 (1.) Abdominal region	54/0	50/1

Element: bl - ly - ki - al

0	10	20	30	40	50	60	70	80	90	100	Element	Right	Left
											Bladder		
											BL 1 (67.) body	52/0	57/1



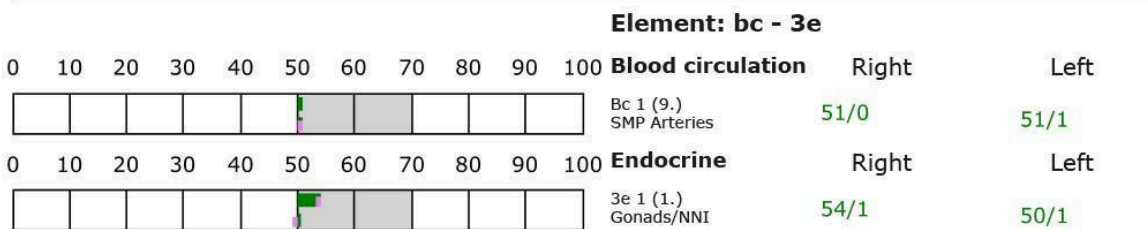
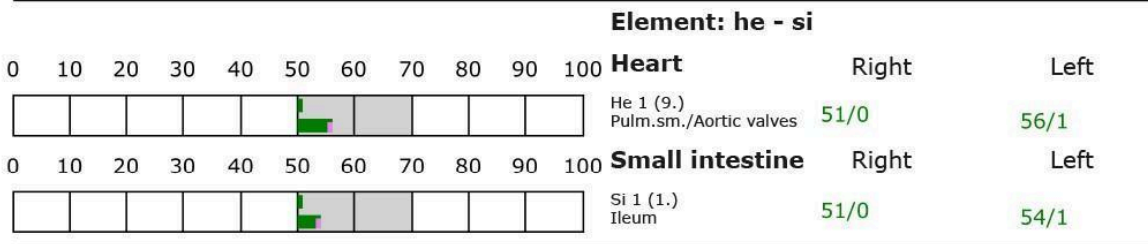
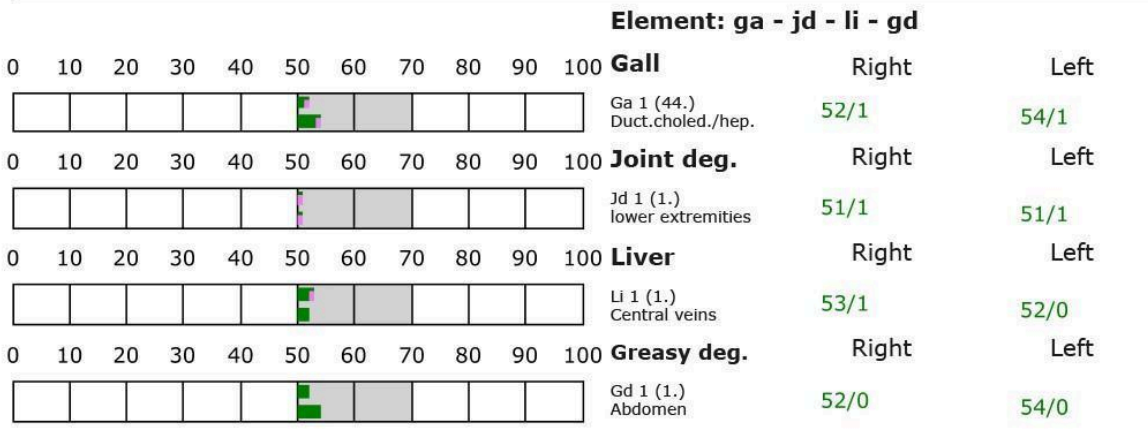
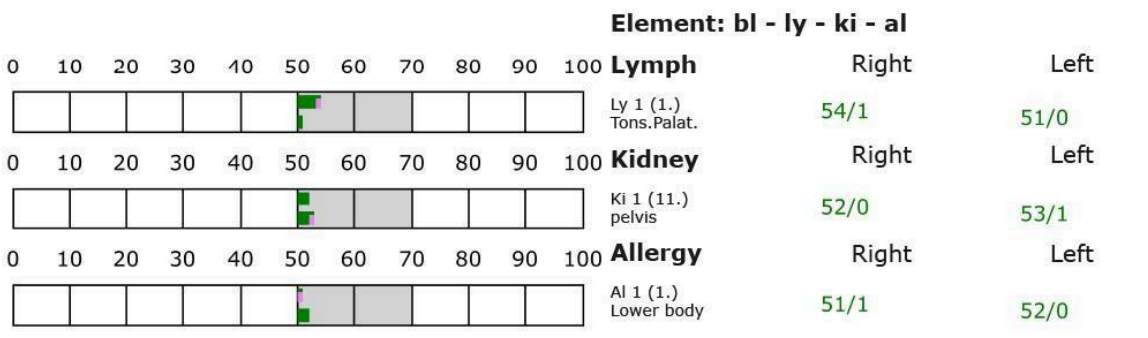
BESA basic test

+++ : Indicator decline > 15 Skt.
 ++ : Indicator decline 6-15 Skt.
 + : Indicator decline 3-5 Skt.

T: Total inflammation (>89 Skt.)
 P: Partial inflammation (70-89 Skt.)

D: Degeneration (< 50 Skt.)

Standard values: (50-70 Skt.)





Proband 9 P16-EG-QV BESA 1 Testing BASIC-BEFORE

BESA 1 Testing BASIC BEFORE quantum entenglement as status

BESA test evaluation P77 1.2

from **28-05-2024 at 14:44 – 14:49** (5 minutes) Page 26 to 28

Result:

he measured values indicated a slightly degenerative picture of the energy-informative system measured via the meridian end points (acupuncture points) and its subordinate organs or organ systems. The measured values on the subject's energy system show a slightly stressful overall energy-informative situation.

95 % in the blue area

5 % in the green area

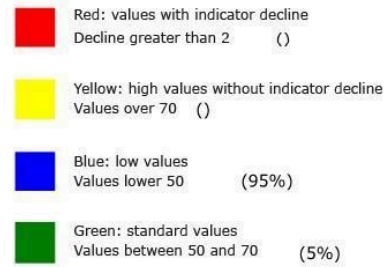
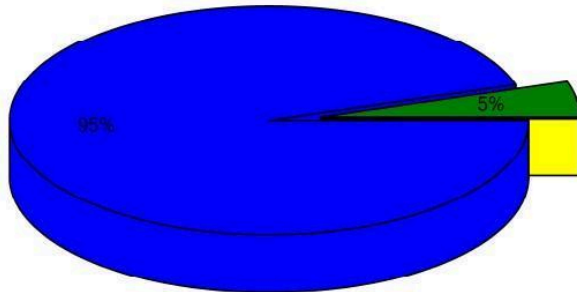
Conclusion:

As the BESA graphs and the pie chart show, 95% of the measurement results were in the blue, partly slightly degenerative range. In relation to the organs tested, this corresponds to a relatively low energy deficiency.

In summary, this means that the test person is in an energy-informative degeneration. In other words, one could also speak of a moderately pronounced energy-informative overall condition, as can be seen in the following BESA diagrams.



Overview of BESA measuring





BESA basic test

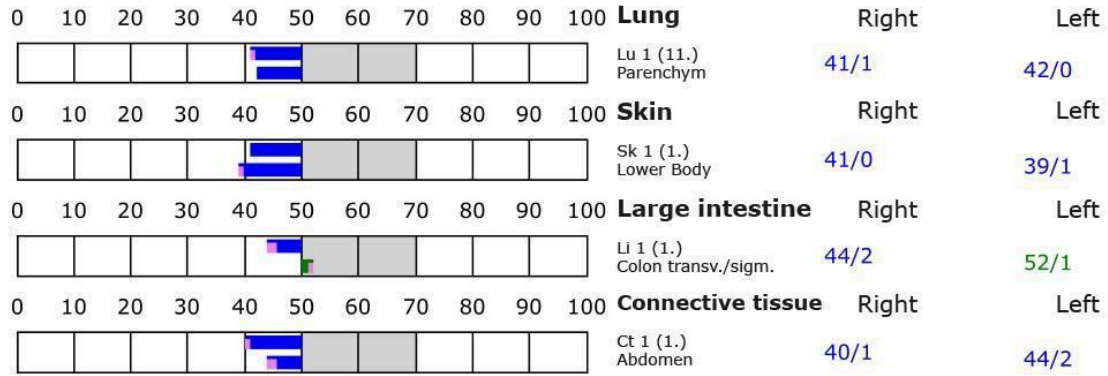
+++ : Indicator decline > 15 Skt.
 ++ : Indicator decline 6-15 Skt.
 + : Indicator decline 3-5 Skt.

T: Total inflammation (>89 Skt.)
 P: Partial inflammation (70-89 Skt.)

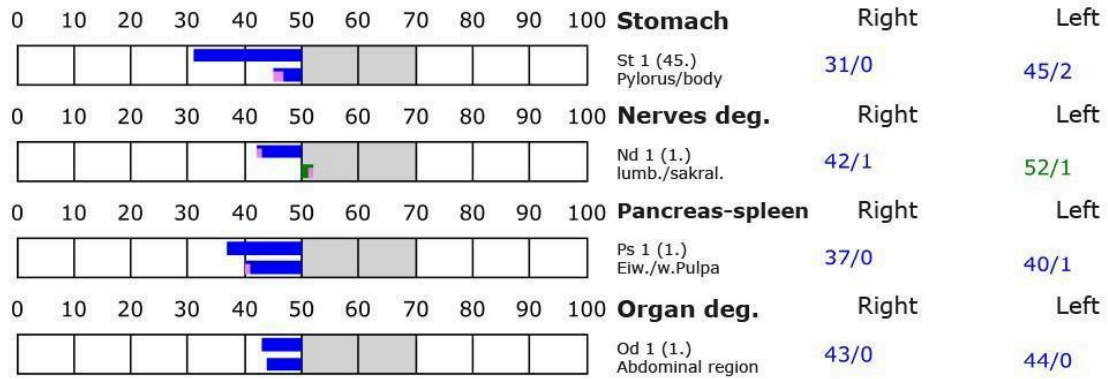
D: Degeneration (< 50 Skt.)

Standard values: (50-70 Skt.)

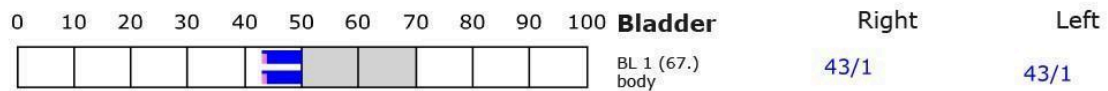
Element: lu - sk - li - ct



Element: st - nd - ps - od



Element: bl - ly - ki - al





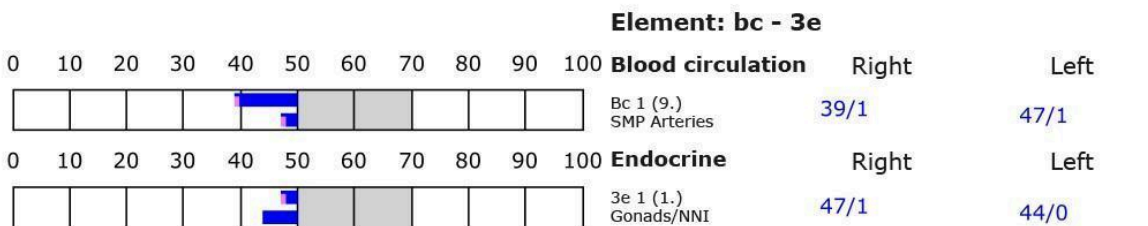
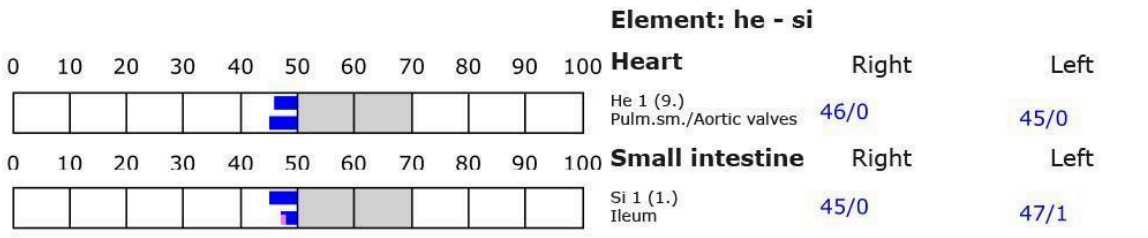
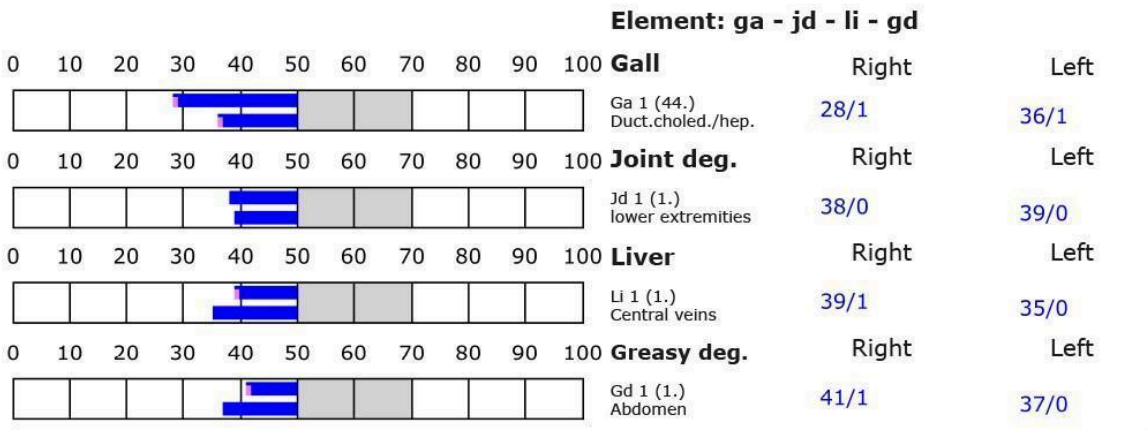
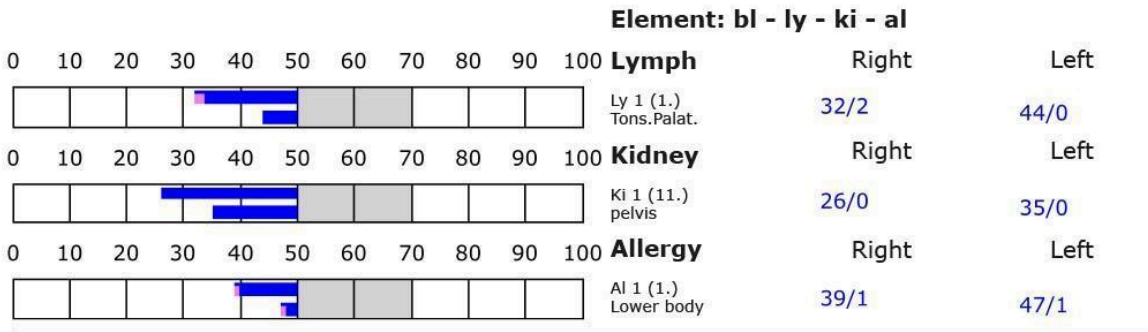
BESA basic test

+++ : Indicator decline > 15 Skt.
 ++ : Indicator decline 6-15 Skt.
 + : Indicator decline 3-5 Skt.

T: Total inflammation (>89 Skt.)
 P: Partial inflammation (70-89 Skt.)

D: Degeneration (< 50 Skt.)

Standard values: (50-70 Skt.)





BESA 2 Testing AFTER

BESA 2 Testing AFTER, during the confrontation with the test object

BESA test evaluation P77 1.2

from **28-05-2024 at 15:19 – 15:23** (4 minutes) Page 29 to 31

Result:

The measurement result showed a clear and therefore significant improvement at all acupuncture points and in the energetic state of the test person.

100 % in the green area

Conclusion:

As the following BESA graphs show, all measured values are in the green, optimal range.

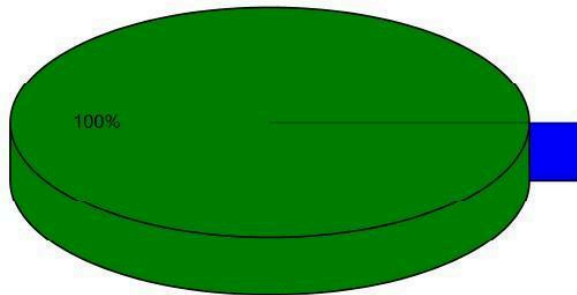
The test object, which was tested on the test person on an energy-informative basis, had a harmonizing effect on the energy-informative field.

Viewed in depth, this means that the test object was even able to harmonize the strongly degenerative measured values from the BESA BEFORE test.

The subsequent comparisons of the BESA graphs confirm the changes or the improvement of the stressed acupuncture points on the subject's meridian system through the test object.



Overview of BESA measuring



- Red: values with indicator decline
Decline greater than 2 ()
- Yellow: high values without indicator decline
Values over 70 ()
- Blue: low values
Values lower 50 ()
- Green: standard values
Values between 50 and 70 (100%)

BESA basic test

+++ : Indicator decline > 15 Skt.
 ++ : Indicator decline 6-15 Skt.
 + : Indicator decline 3-5 Skt.

T: Total inflammation (>89 Skt.)
 P: Partial inflammation (70-89 Skt.)

D: Degeneration (< 50 Skt.)

Standard values: (50-70 Skt.)

Element: lu - sk - li - ct

0	10	20	30	40	50	60	70	80	90	100	Element	Right	Left
											Lung		
											Lu 1 (11.) Parenchym	51/1	52/0
											Skin		
											Sk 1 (1.) Lower Body	56/1	51/0
											Large intestine		
											Li 1 (1.) Colon transv./sigm.	51/1	54/0
											Connective tissue		
											Ct 1 (1.) Abdomen	54/1	52/0

Element: st - nd - ps - od

0	10	20	30	40	50	60	70	80	90	100	Element	Right	Left
											Stomach		
											St 1 (45.) Pylorus/body	53/0	51/0
											Nerves deg.		
											Nd 1 (1.) lumb./sakral.	50/0	55/1
											Pancreas-spleen		
											Ps 1 (1.) Eiw./w.Pulpa	51/1	51/1
											Organ deg.		
											Od 1 (1.) Abdominal region	52/2	51/0

Element: bl - ly - ki - al

0	10	20	30	40	50	60	70	80	90	100	Element	Right	Left
											Bladder		
											BL 1 (67.) body	55/0	54/0



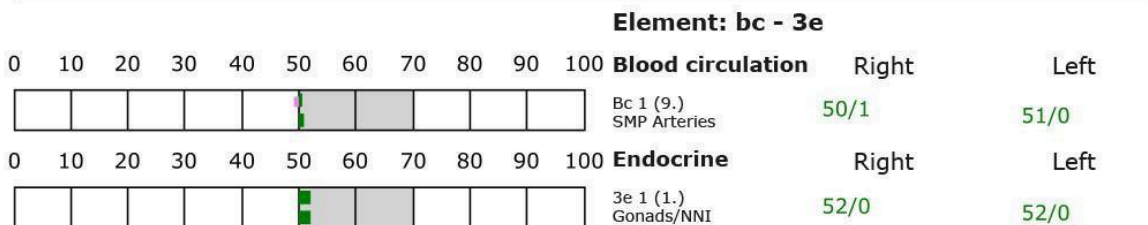
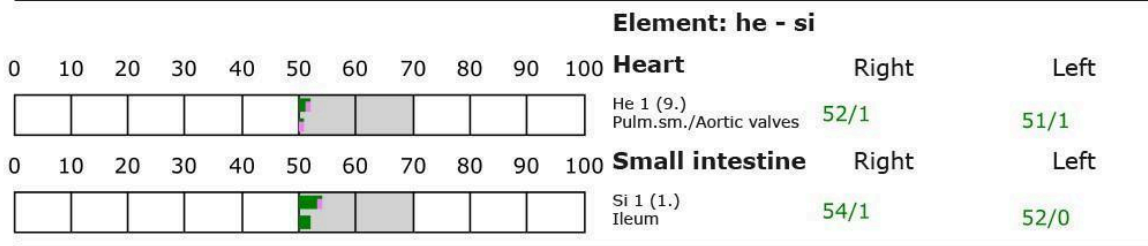
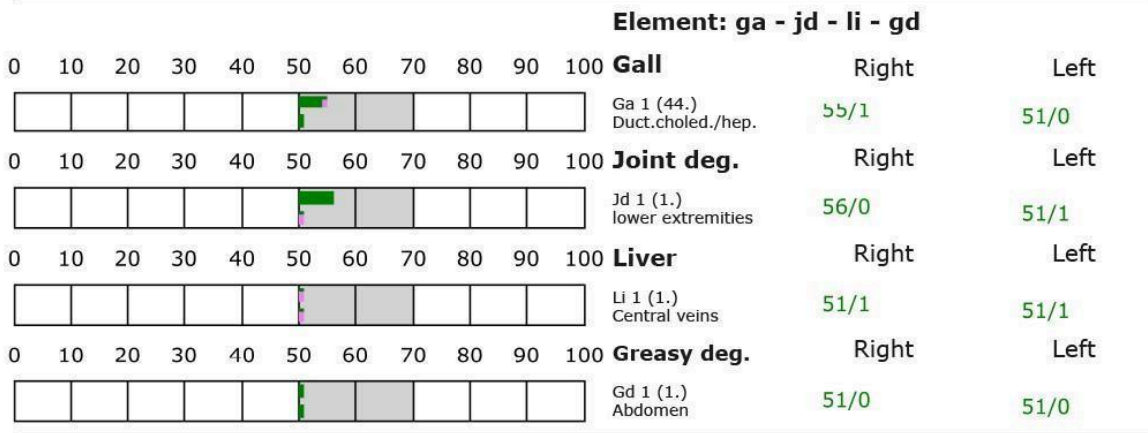
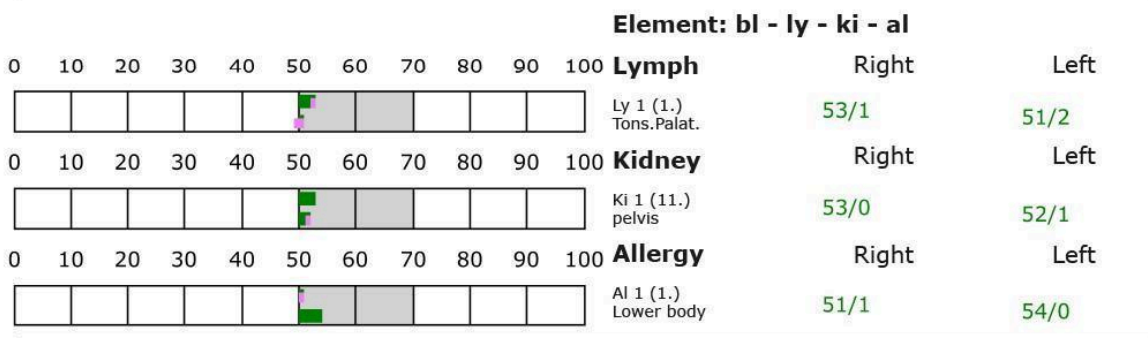
BESA basic test

+++ : Indicator decline > 15 Skt.
 ++ : Indicator decline 6-15 Skt.
 + : Indicator decline 3-5 Skt.

T: Total inflammation (>89 Skt.)
 P: Partial inflammation (70-89 Skt.)

D: Degeneration (< 50 Skt.)

Standard values: (50-70 Skt.)





Proband 10 P17-EG-QV BESA 1 Testing BASIC-BEFORE

BESA 1 Testing BASIC BEFORE quantum entenglement as status

BESA test evaluation P77 1.2
from **28-05-2024 at 15:31 – 15:34** (3 minutes) Page 32 to 34

Result:

The measured values indicated a slightly degenerative picture at the energy-informative system measured via the meridian end points (acupuncture points). The test person's measured values indicate a moderately stressful overall energy-informative situation.

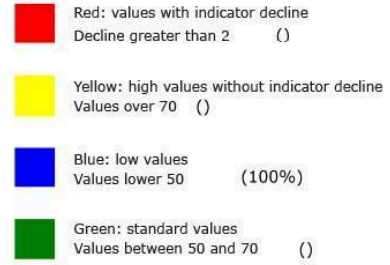
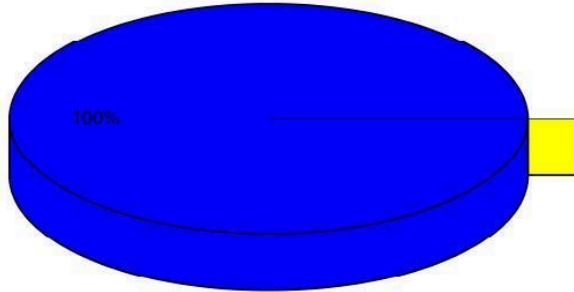
100 % in the blue area

Conclusion: As the BESA graphs and the pie chart show, 100% of the measurement results were in the blue, but only slightly degenerative range. This corresponds to a relatively balanced or only weak energy deficiency.

In summary, this means that the subject is in a slightly weakened energy-informative degeneration overall. The following BESA graphs confirm the slightly weakened energy-informative overall condition.



Overview of BESA measuring





BESA basic test

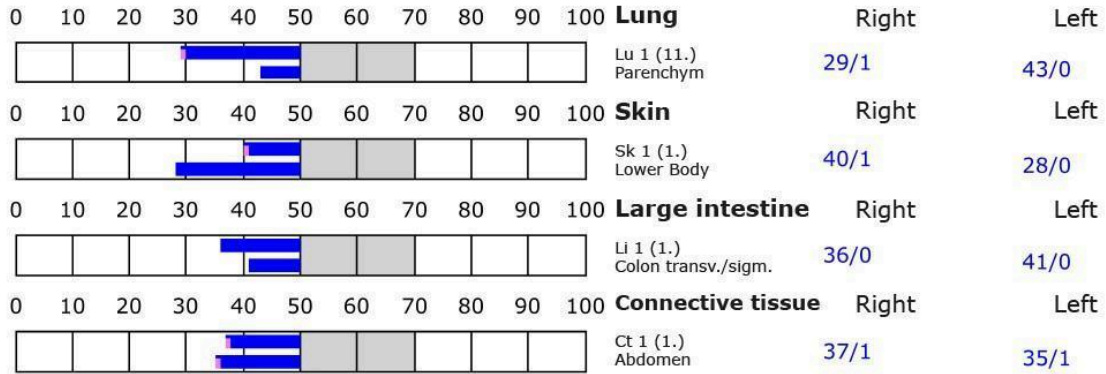
+++ : Indicator decline > 15 Skt.
 ++ : Indicator decline 6-15 Skt.
 + : Indicator decline 3-5 Skt.

T: Total inflammation (>89 Skt.)
 P: Partial inflammation (70-89 Skt.)

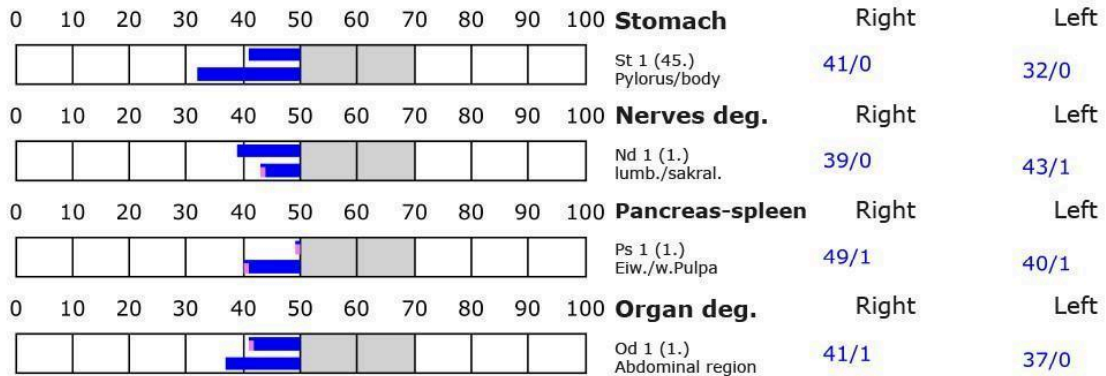
D: Degeneration (< 50 Skt.)

Standard values: (50-70 Skt.)

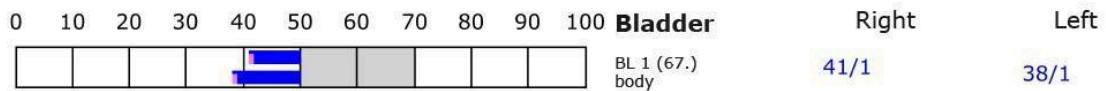
Element: lu - sk - li - ct



Element: st - nd - ps - od



Element: bl - ly - ki - al





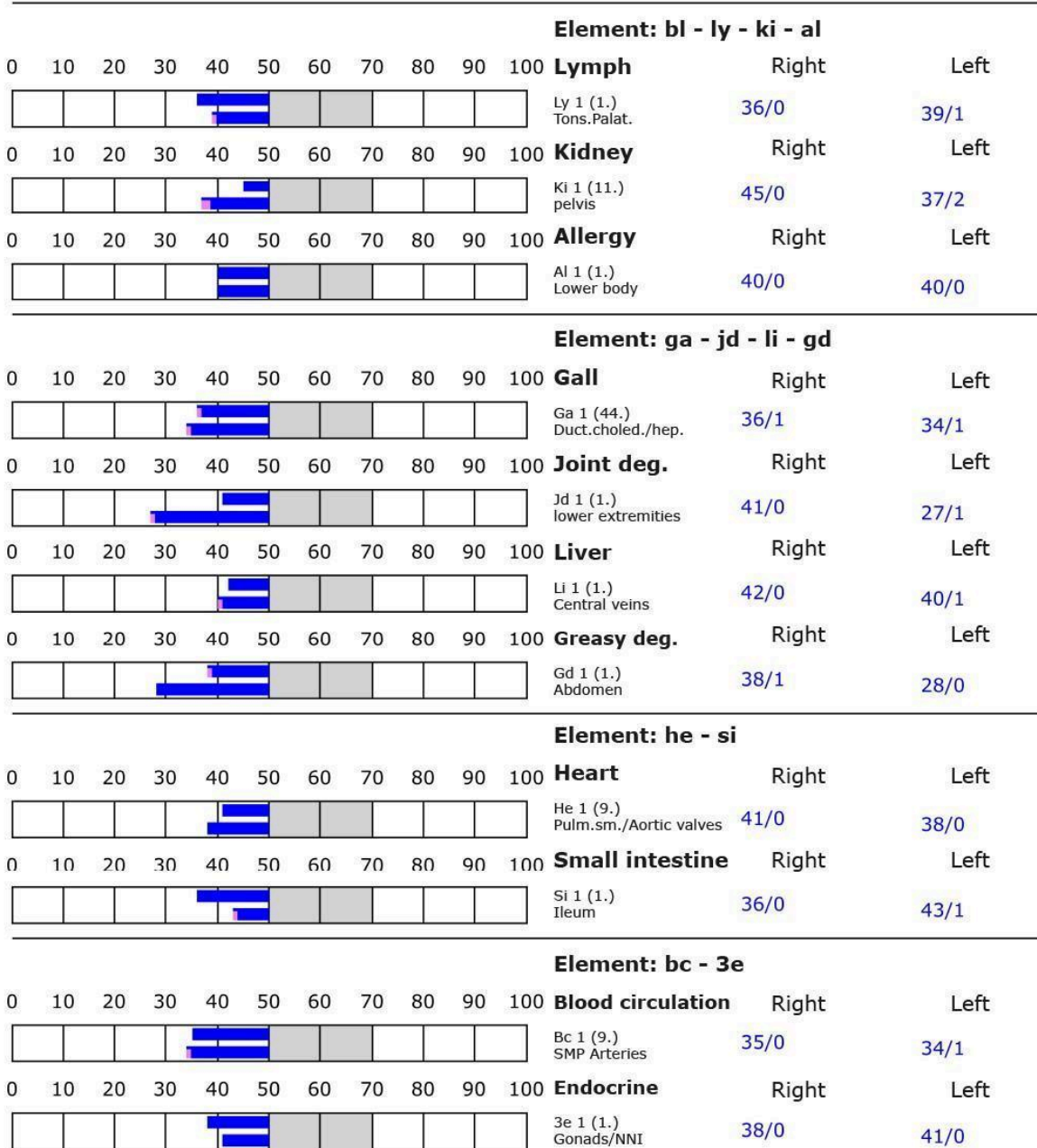
BESA basic test

+++ : Indicator decline > 15 Skt.
 ++ : Indicator decline 6-15 Skt.
 + : Indicator decline 3-5 Skt.

T: Total inflammation (>89 Skt.)
 P: Partial inflammation (70-89 Skt.)

D: Degeneration (< 50 Skt.)

Standard values: (50-70 Skt.)





BESA 2 Testing AFTER

BESA 2 Testing AFTER during the quantum entanglement confrontation with the test object

BESA test evaluierung P77 1.2

from **28-05-2024 at 15:35 – 15:39** (4 minutes) Page 35 to 37

Result:

The measurement result showed a clear and therefore significant improvement at all acupuncture points and in the energetic state of the test person.

100 % in the green area

Conclusion:

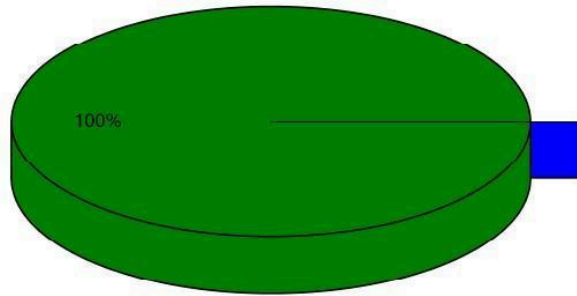
As the following BESA graphs show, all measured values are in the green, optimal range.

The test object, which was tested on the subject on an energy-informative basis, showed a harmonizing effect on the subject's energy-informative field. Viewed in depth, this means that the harmonizing effect of the test object also extended to the lower measured values.

The subsequent comparisons of the BESA graphs confirm the changes or improvement of the stressed acupuncture points on the subject's meridian system as a result of the test object.



Overview of BESA measuring



- Red: values with indicator decline
Decline greater than 2 ()
- Yellow: high values without indicator decline
Values over 70 ()
- Blue: low values
Values lower 50 ()
- Green: standard values
Values between 50 and 70 (100%)

BESA basic test

+++ : Indicator decline > 15 Skt.
 ++ : Indicator decline 6-15 Skt.
 + : Indicator decline 3-5 Skt.

T: Total inflammation (>89 Skt.)
 P: Partial inflammation (70-89 Skt.)

D: Degeneration (< 50 Skt.)

Standard values: (50-70 Skt.)

Element: lu - sk - li - ct

0	10	20	30	40	50	60	70	80	90	100	Element	Right	Left
											Lung		
											Lu 1 (11.) Parenchym	52/1	56/1
											Skin		
											Sk 1 (1.) Lower Body	54/1	52/1
											Large intestine		
											Li 1 (1.) Colon transv./sigm.	51/0	56/1
											Connective tissue		
											Ct 1 (1.) Abdomen	50/1	54/1

Element: st - nd - ps - od

0	10	20	30	40	50	60	70	80	90	100	Element	Right	Left
											Stomach		
											St 1 (45.) Pylorus/body	51/0	52/0
											Nerves deg.		
											Nd 1 (1.) lumb./sakral.	51/0	56/0
											Pancreas-spleen		
											Ps 1 (1.) Eiw./w.Pulpa	51/0	50/0
											Organ deg.		
											Od 1 (1.) Abdominal region	53/1	54/0

Element: bl - ly - ki - al

0	10	20	30	40	50	60	70	80	90	100	Element	Right	Left
											Bladder		
											BL 1 (67.) body	52/0	55/0



BESA basic test

+++ : Indicator decline > 15 Skt.
 ++ : Indicator decline 6-15 Skt.
 + : Indicator decline 3-5 Skt.

T: Total inflammation (>89 Skt.)
 P: Partial inflammation (70-89 Skt.)

D: Degeneration (< 50 Skt.)

Standard values: (50-70 Skt.)

Element: bl - ly - ki - al													
0	10	20	30	40	50	60	70	80	90	100	Lymph	Right	Left
					Ly 1 (1.) Tons.Palat.						51/0	52/0	
0	10	20	30	40	50	60	70	80	90	100	Kidney	Right	Left
					Ki 1 (11.) pelvis						53/0	51/0	
0	10	20	30	40	50	60	70	80	90	100	Allergy	Right	Left
					Al 1 (1.) Lower body						51/1	51/1	

Element: ga - jd - li - gd													
0	10	20	30	40	50	60	70	80	90	100	Gall	Right	Left
					Ga 1 (44.) Duct.choled./hep.						51/1	52/1	
0	10	20	30	40	50	60	70	80	90	100	Joint deg.	Right	Left
					Jd 1 (1.) lower extremities						50/0	55/1	
0	10	20	30	40	50	60	70	80	90	100	Liver	Right	Left
					Li 1 (1.) Central veins						54/1	54/1	
0	10	20	30	40	50	60	70	80	90	100	Greasy deg.	Right	Left
					Gd 1 (1.) Abdomen						50/0	52/0	

Element: he - si													
0	10	20	30	40	50	60	70	80	90	100	Heart	Right	Left
					He 1 (9.) Pulm.sm./Aortic valves						54/0	50/0	
0	10	20	30	40	50	60	70	80	90	100	Small intestine	Right	Left
					Si 1 (1.) Ileum						55/1	50/0	

Element: bc - 3e													
0	10	20	30	40	50	60	70	80	90	100	Blood circulation	Right	Left
					Bc 1 (9.) SMP Arteries						54/2	58/1	
0	10	20	30	40	50	60	70	80	90	100	Endocrine	Right	Left
					3e 1 (1.) Gonads/NNI						52/0	55/0	



Proband 11 P22-EG BESA 1 Testing BASIC-BEFORE

BESA 1 Testing BASIC BEFORE as status

BESA test evaluation P77 1.2
from **31-05-2024 at 12:13 – 12:21** (8 minutes) Page 38 to 40

Result:

The measured values indicated a largely balanced picture of the energy-informative system measured via the meridian end points (acupuncture points) and its subordinate organ systems. The measured values on the subject's energy system indicate a slightly stressful overall energy-informative situation.

80 % in the blue area

20 % in the green area

Conclusion:

As the BESA graphs and the pie chart show, although 80% of the measurement results were in the blue range, the majority were only slightly degenerative. In relation to the organs tested, this corresponds to a slightly weakened energy system.

In summary, this means that the subject is in a balanced to slightly degenerative energy range. In other words, one could also speak of a slightly weakened energy-informative overall state, as can be seen in the following BESA diagrams.



BESA basic test

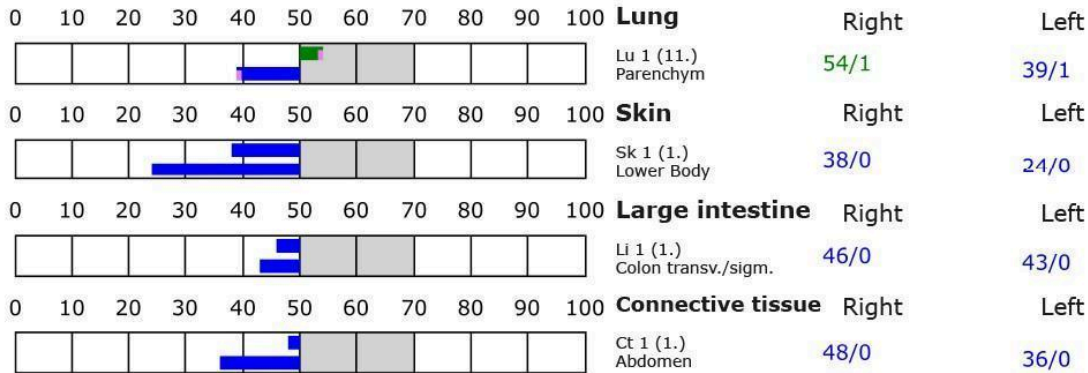
+++ : Indicator decline > 15 Skt.
 ++ : Indicator decline 6-15 Skt.
 + : Indicator decline 3-5 Skt.

T: Total inflammation (>89 Skt.)
 P: Partial inflammation (70-89 Skt.)

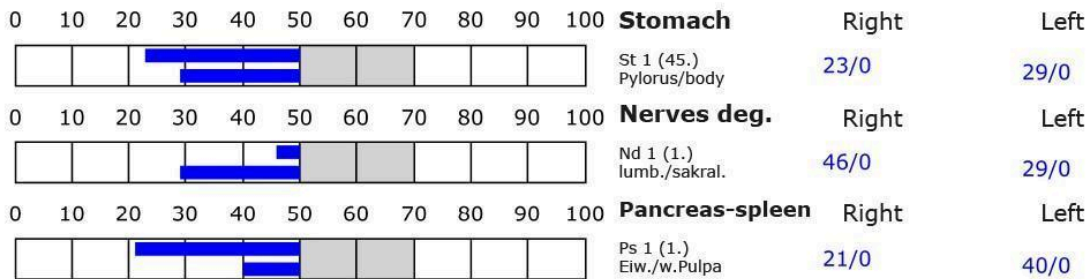
D: Degeneration (< 50 Skt.)

Standard values: (50-70 Skt.)

Element: lu - sk - li - ct



Element: st - nd - ps - od





BESA basic test

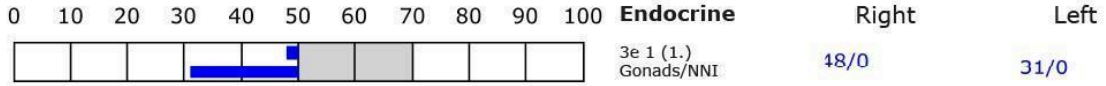
+++ : Indicator decline > 15 Skt.
 ++ : Indicator decline 6-15 Skt.
 + : Indicator decline 3-5 Skt.

T: Total inflammation (>89 Skt.)
 P: Partial inflammation (70-89 Skt.)

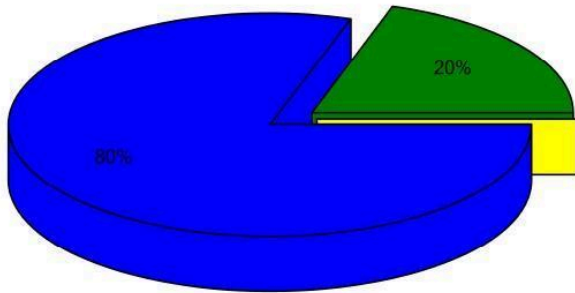
D: Degeneration (< 50 Skt.)

Standard values: (50-70 Skt.)

Element: bc - 3e



Overview of BESA measuring



- Red: values with indicator decline
Decline greater than 2 ()
- Yellow: high values without indicator decline
Values over 70 ()
- Blue: low values
Values lower 50 (80%)
- Green: standard values
Values between 50 and 70 (20%)



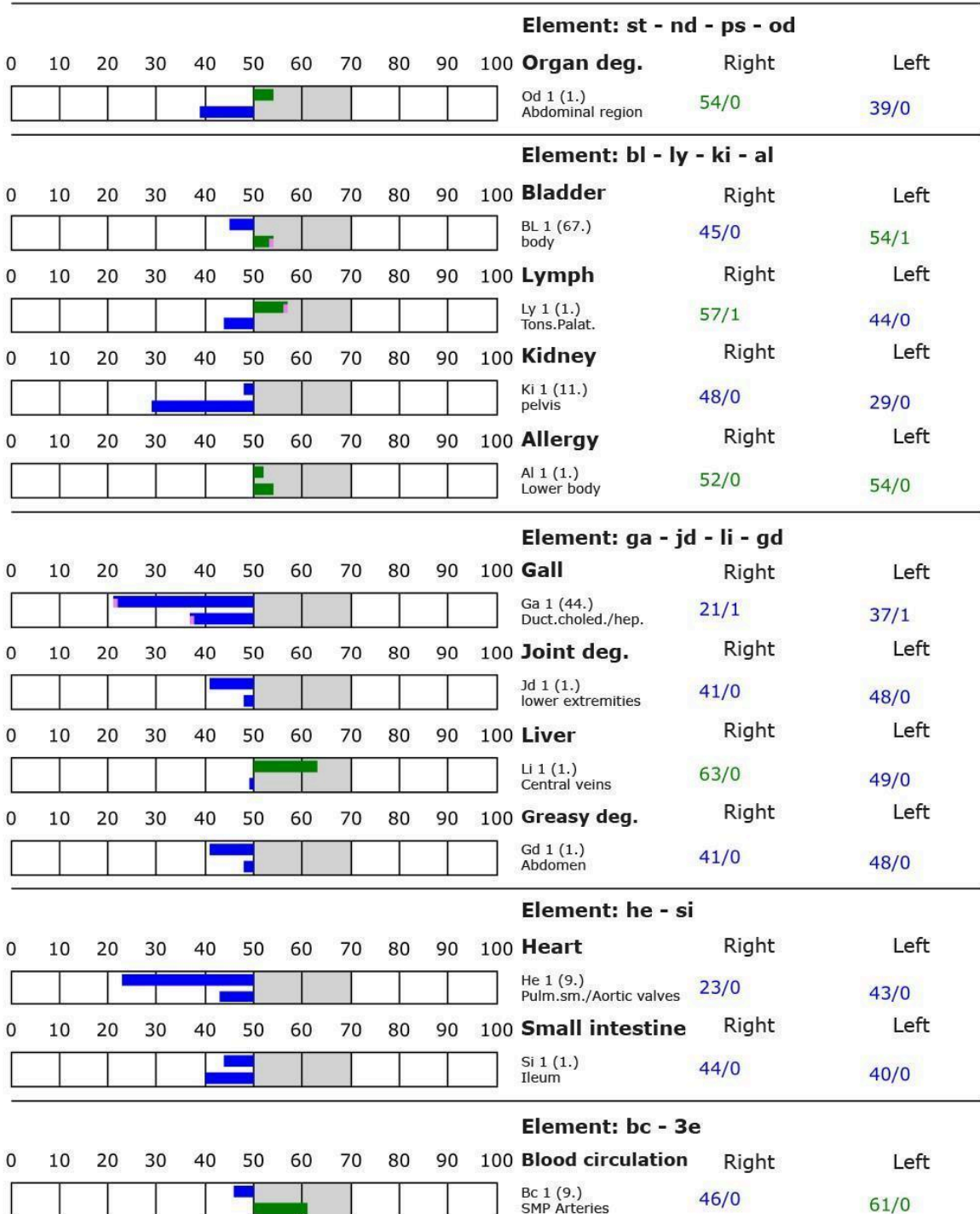
BESA basic test

+++ : Indicator decline > 15 Skt.
 ++ : Indicator decline 6-15 Skt.
 + : Indicator decline 3-5 Skt.

T: Total inflammation (>89 Skt.)
 P: Partial inflammation (70-89 Skt.)

D: Degeneration (< 50 Skt.)

Standard values: (50-70 Skt.)





BESA 2 Testing AFTER

BESA 2 Testing AFTER, during the confrontation with the test object.

BESA test evaluation P77 1.2

from **31-05-2024 at 12:38 – 12:46** (8 minutes) Page 41 to 43

Result:

The measurement result showed a clear and therefore significant improvement at all acupuncture points and in the energetic state of the test person.

100 % in the green area

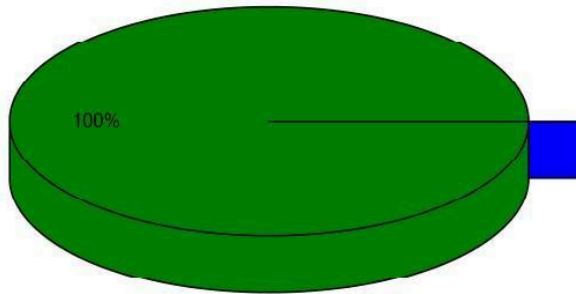
Conclusion:

As the following BESA graphs show, all measured values are in the green, optimal range.

The test object, which was tested on the subject on an energy-informative basis, showed a harmonizing effect on the subject's energy-informative field. The subsequent comparisons of the BESA graphs confirm the changes or improvement of the stressed acupuncture points on the subject's meridian system as a result of the test object.



Overview of BESA measuring



- Red: values with indicator decline
Decline greater than 2 ()
- Yellow: high values without indicator decline
Values over 70 ()
- Blue: low values
Values lower 50 ()
- Green: standard values
Values between 50 and 70 (100%)

BESA basic test

+++ : Indicator decline > 15 Skt.
 ++ : Indicator decline 6-15 Skt.
 + : Indicator decline 3-5 Skt.

T: Total inflammation (>89 Skt.)
 P: Partial inflammation (70-89 Skt.)

D: Degeneration (< 50 Skt.)

Standard values: (50-70 Skt.)

Element: lu - sk - li - ct

0	10	20	30	40	50	60	70	80	90	100	Element	Right	Left
											Lung		
											Lu 1 (11.) Parenchym	54/0	60/0
											Skin		
											Sk 1 (1.) Lower Body	57/0	60/0
											Large intestine		
											Li 1 (1.) Colon transv./sigm.	55/0	54/0
											Connective tissue		
											Ct 1 (1.) Abdomen	57/0	59/0

Element: st - nd - ps - od

0	10	20	30	40	50	60	70	80	90	100	Element	Right	Left
											Stomach		
											St 1 (45.) Pylorus/body	55/0	57/0
											Nerves deg.		
											Nd 1 (1.) lumb./sakral.	53/1	56/1
											Pancreas-spleen		
											Ps 1 (1.) Eiw./w.Pulpa	64/1	52/0
											Organ deg.		
											Od 1 (1.) Abdominal region	62/0	60/0

Element: bl - ly - ki - al

0	10	20	30	40	50	60	70	80	90	100	Element	Right	Left
											Bladder		
											BL 1 (67.) body	56/0	54/0



BESA basic test

+++ : Indicator decline > 15 Skt.
 ++ : Indicator decline 6-15 Skt.
 + : Indicator decline 3-5 Skt.

T: Total inflammation (>89 Skt.)
 P: Partial inflammation (70-89 Skt.)

D: Degeneration (< 50 Skt.)

Standard values: (50-70 Skt.)

Element: bl - ly - ki - al

0	10	20	30	40	50	60	70	80	90	100	Element	Right	Left
											Lymph		
											Ly 1 (1.) Tons.Palat.	52/0	58/0
											Kidney		
											Ki 1 (11.) pelvis	58/0	55/1
											Allergy		
											Al 1 (1.) Lower body	51/1	55/0

Element: ga - jd - li - gd

0	10	20	30	40	50	60	70	80	90	100	Element	Right	Left
											Gall		
											Ga 1 (44.) Duct.choled./hep.	51/1	57/0
											Joint deg.		
											Jd 1 (1.) lower extremities	61/1	53/0
											Liver		
											Li 1 (1.) Central veins	56/0	54/1
											Greasy deg.		
											Gd 1 (1.) Abdomen	56/0	54/0

Element: he - si

0	10	20	30	40	50	60	70	80	90	100	Element	Right	Left
											Heart		
											He 1 (9.) Pulm.sm./Aortic valves	55/0	55/0
											Small intestine		
											Si 1 (1.) Ileum	58/0	52/1

Element: bc - 3e

0	10	20	30	40	50	60	70	80	90	100	Element	Right	Left
											Blood circulation		
											Bc 1 (9.) SMP Arteries	54/0	52/0
											Endocrine		
											3e 1 (1.) Gonads/NNI	57/0	57/1



Proband 12-P23-EG

BESA 1 Testing BASIC-BEFORE

BESA 1 Testing BASIC BEFORE as status

BESA test evaluation P77 1.2
from **31-05-2024 at 13:04 – 13:14** (10 minutes) Page 44 to 46

Result:

The measured values indicated a partly strongly degenerative picture of the energy-informative system measured via the meridian end points (acupuncture points). The test person's measured values show an overall energy-informative situation that is highly stressful in some cases.

97 % in the blue area

2 % in the green area

1 % in the yellow transition area

Conclusion:

As the BESA graphs and the pie chart show, as many as 97% of the measurement results were in the blue and in some cases deeply degenerative range. This corresponds to a relatively severe energy deficiency.

In summary, this means that the test person is in a pronounced energy-informative degeneration overall. The following BESA graphs confirm the strongly weakened energy-informative overall condition.



BESA basic test

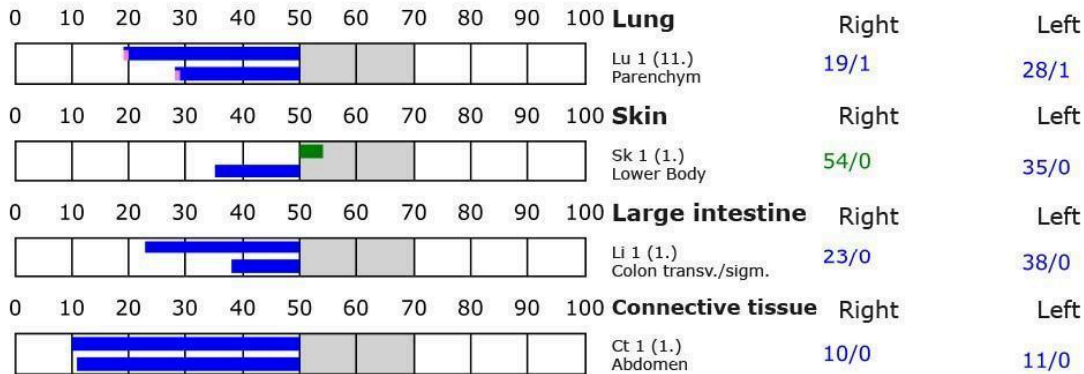
+++ : Indicator decline > 15 Skt.
 ++ : Indicator decline 6-15 Skt.
 + : Indicator decline 3-5 Skt.

T: Total inflammation (>89 Skt.)
 P: Partial inflammation (70-89 Skt.)

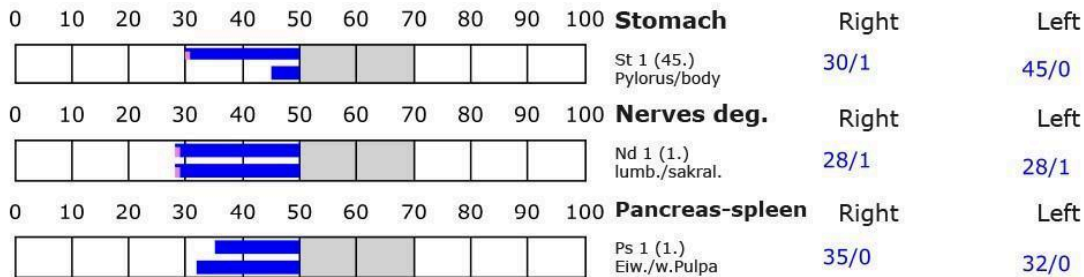
D: Degeneration (< 50 Skt.)

Standard values: (50-70 Skt.)

Element: lu - sk - li - ct



Element: st - nd - ps - od





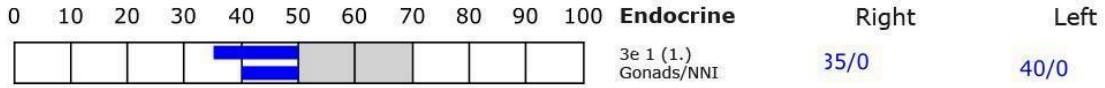
BESA basic test

+++ : Indicator decline > 15 Skt.
 ++ : Indicator decline 6-15 Skt.
 + : Indicator decline 3-5 Skt.

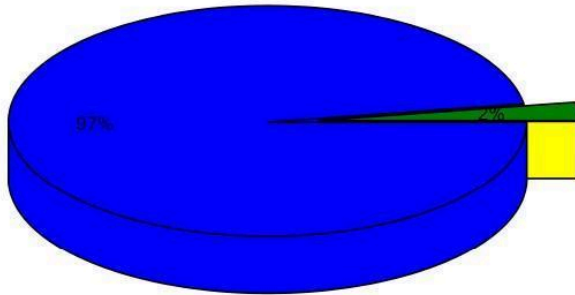
T: Total inflammation (>89 Skt.)
 P: Partial inflammation (70-89 Skt.)

D: Degeneration (< 50 Skt.) Standard values: (50-70 Skt.)

Element: bc - 3e



Overview of BESA measuring



- Red: values with indicator decline
Decline greater than 2 ()
- Yellow: high values without indicator decline
Values over 70 ()
- Blue: low values
Values lower 50 (97%)
- Green: standard values
Values between 50 and 70 (2%)



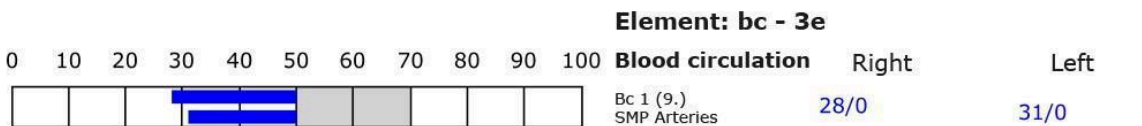
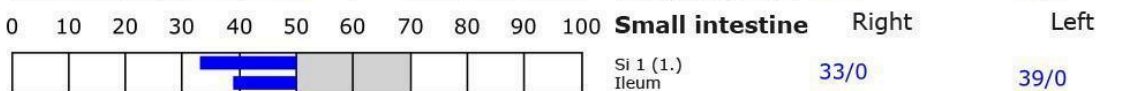
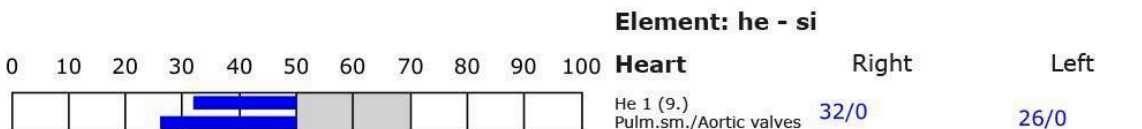
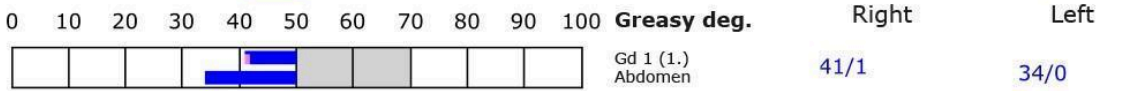
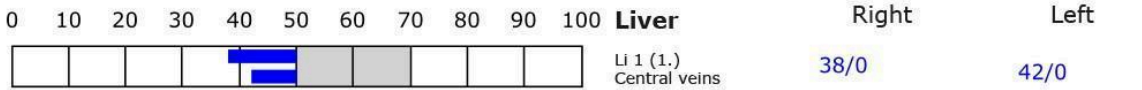
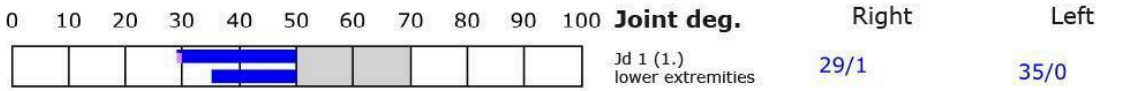
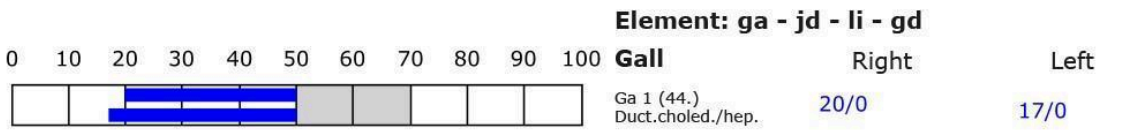
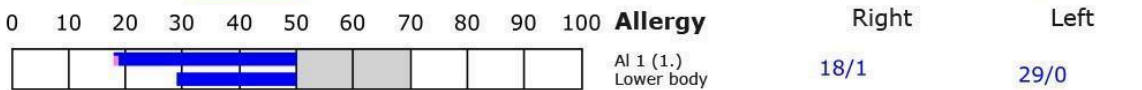
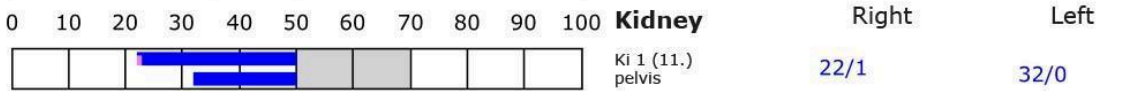
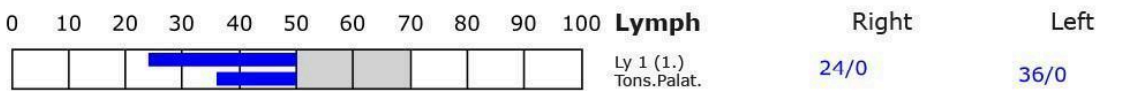
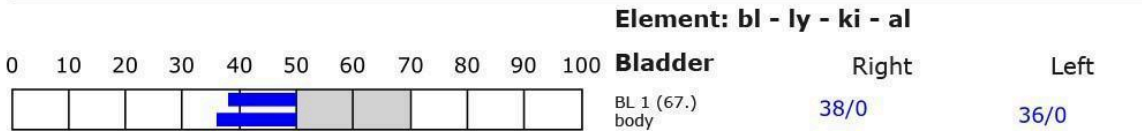
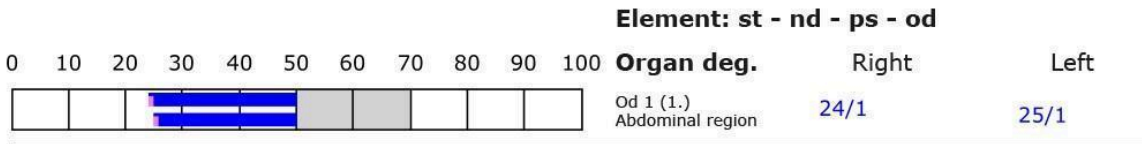
BESA basic test

+++ : Indicator decline > 15 Skt.
 ++ : Indicator decline 6-15 Skt.
 + : Indicator decline 3-5 Skt.

T: Total inflammation (>89 Skt.)
 P: Partial inflammation (70-89 Skt.)

D: Degeneration (< 50 Skt.)

Standard values: (50-70 Skt.)





BESA 2 Testing AFTER

BESA 2 Testing AFTER during the confrontation with the test object

BESA test evaluation P77 1.2

from **31-05-2024 at 13:29 – 13:40** (11 minutes) Page 47 to 49

Result:

The measurement result showed a clear and therefore significant improvement at all acupuncture points and in the energetic state of the test person.

100 % in the green area

Conclusion:

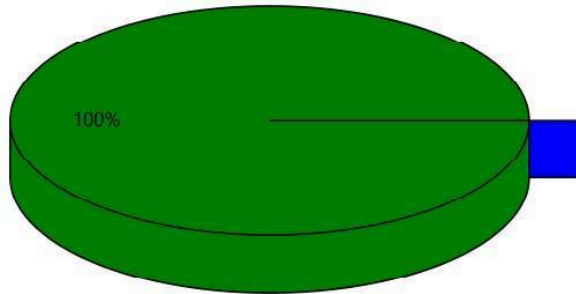
As the following BESA graphs show, all measured values are in the green, optimal range.

The test object, which was tested on the subject on an energy-informative basis, showed a harmonizing effect on the subject's energy-informative field. Viewed in depth, this means that the harmonizing effect of the test object also extended to the lower measured values.

The subsequent comparisons of the BESA graphs confirm the changes or improvement of the stressed acupuncture points on the subject's meridian system as a result of the test object.



Overview of BESA measuring



- Red: values with indicator decline
Decline greater than 2 ()
- Yellow: high values without indicator decline
Values over 70 ()
- Blue: low values
Values lower 50 ()
- Green: standard values
Values between 50 and 70 (100%)

BESA basic test

+++ : Indicator decline > 15 Skt.
 ++ : Indicator decline 6-15 Skt.
 + : Indicator decline 3-5 Skt.

T: Total inflammation (>89 Skt.)
 P: Partial inflammation (70-89 Skt.)

D: Degeneration (< 50 Skt.)

Standard values: (50-70 Skt.)

Element: lu - sk - li - ct

0	10	20	30	40	50	60	70	80	90	100	Element	Right	Left
											Lung		
											Skin		
											Large intestine		
											Connective tissue		
											Lu 1 (11.) Parenchym	57/0	55/0
											Sk 1 (1.) Lower Body	64/1	59/1
											Li 1 (1.) Colon transv./sigm.	52/1	55/1
											Ct 1 (1.) Abdomen	59/0	58/1

Element: st - nd - ps - od

0	10	20	30	40	50	60	70	80	90	100	Element	Right	Left
											Stomach		
											Nerves deg.		
											Pancreas-spleen		
											Organ deg.		
											St 1 (45.) Pylorus/body	50/2	51/0
											Nd 1 (1.) lumb./sakral.	52/1	54/1
											Ps 1 (1.) Eiw./w.Pulpa	57/0	55/0
											Od 1 (1.) Abdominal region	51/1	54/0

Element: bl - ly - ki - al

0	10	20	30	40	50	60	70	80	90	100	Element	Right	Left
											Bladder		
											BL 1 (67.) body	55/1	



BESA basic test

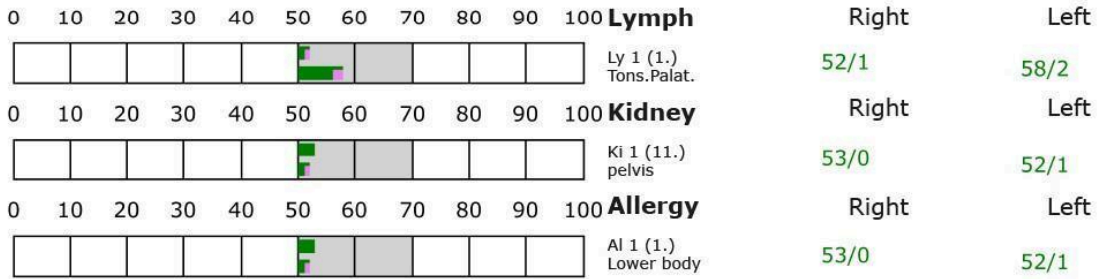
+++ : Indicator decline > 15 Skt.
 ++ : Indicator decline 6-15 Skt.
 + : Indicator decline 3-5 Skt.

T: Total inflammation (>89 Skt.)
 P: Partial inflammation (70-89 Skt.)

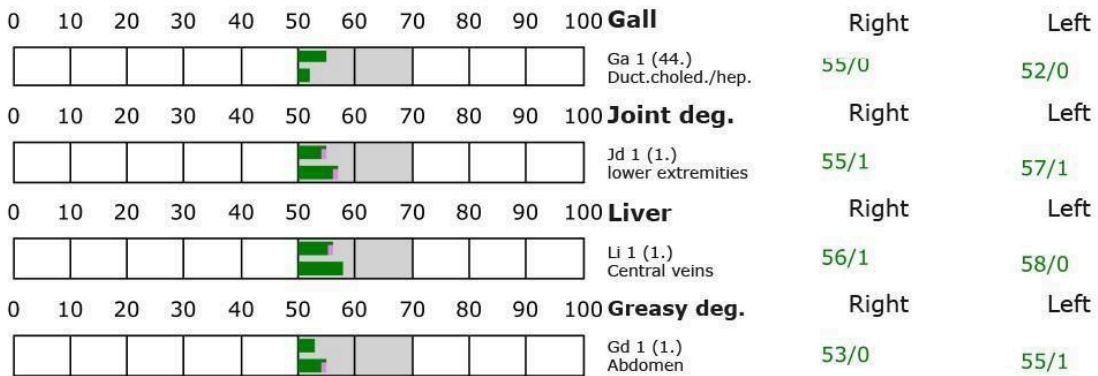
D: Degeneration (< 50 Skt.)

Standard values: (50-70 Skt.)

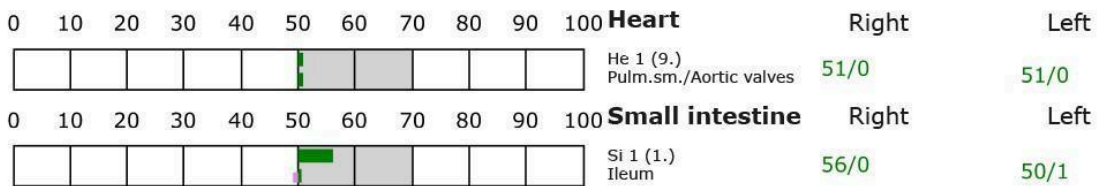
Element: bl - ly - ki - al



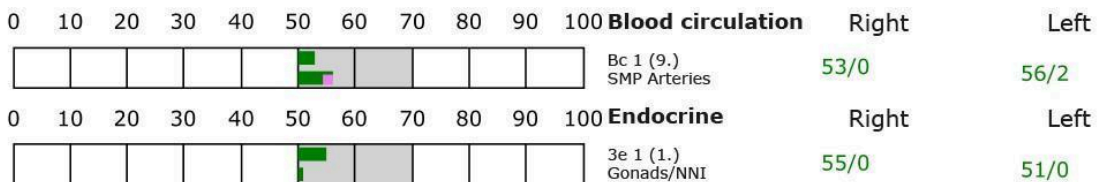
Element: ga - jd - li - gd



Element: he - si



Element: bc - 3e

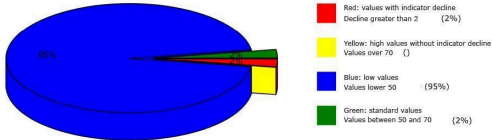




All BESA tests at a glance

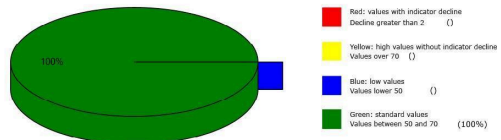
Proband 7 P14 EG-QV

Overview of BESA measuring



BESA-Basic-Testing BEFORE

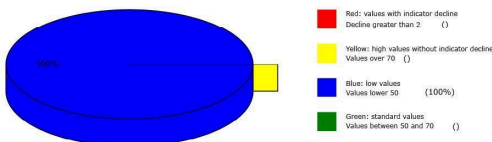
Overview of BESA measuring



BESA-Testing AFTER with test object

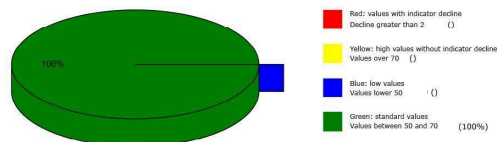
Proband 8 P15 EG-QV

Overview of BESA measuring



BESA-Basic-Testing BEFORE

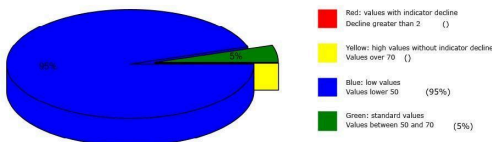
Overview of BESA measuring



BESA-Testing AFTER with test object

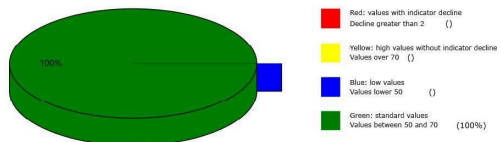
Proband 9-P16 EG-QV

Overview of BESA measuring



BESA-Basic-Testing BEFORE

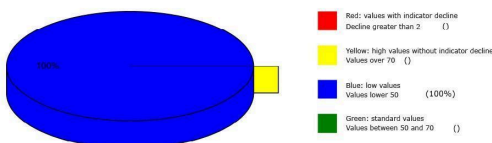
Overview of BESA measuring



BESA-Testing AFTER with test object

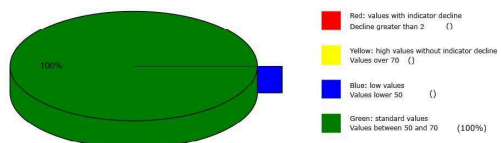
Proband 10-P17 EG-QV

Overview of BESA measuring



BESA-Basic-Testing BEFORE

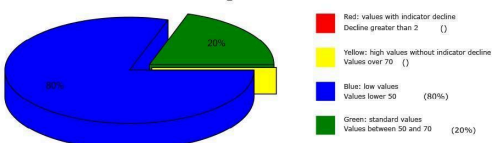
Overview of BESA measuring



BESA-Testing AFTER with test object

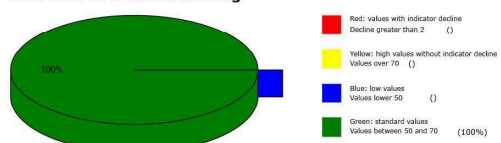
Proband 11-P22 EG

Overview of BESA measuring



BESA-Basic-Testing BEFORE

Overview of BESA measuring

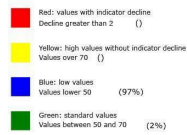
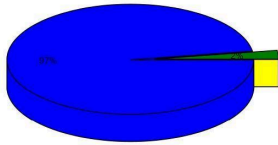


BESA-Testing AFTER with test object



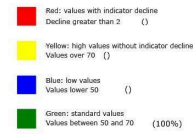
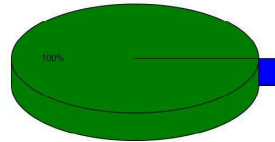
Proband 12-P23 EG

Overview of BESA measuring



BESA-Basic-Testing BEFORE

Overview of BESA measuring



BESA-Testing AFTER with test object

General information on the test result

Humans are a kind of receiving antenna for environmental information. This is because human life is fundamentally and exclusively dependent on environmental information. Our organism is biologically very sensitive to where natural information (fields) is located or where this natural information is subject to interactions and fluctuations. For this reason, detected informative interference fields are biologically highly relevant. Any reduction or conversion of these interference fields (ideally to 100 percent) is biologically very important, often even vital. These information burdens from our environment are only compatible with life if they can be readjusted to a natural fluctuation tolerance. Disruptions, problems, blockages and disharmonies in the human biological control loop are caused by such disruptive toxic information influences.

Neutralizing or harmonizing effects were demonstrated in this detailed project P77 1.2 Experimental group to determine the effect of the “H.E.A.L.® 360 Frequency”. The “H.E.A.L.® 360 Frequency” was able to neutralize the biologically detrimental effects and effects of interference fields observed in the test subjects.

This project proves the significant ability of the “ H.E.A.L.® 360 Frequency” to neutralize and harmonize the stress factors tested in this detailed project P77 1.2 and to transform them into biological life-promoting qualities.

Authorized Summary

The BESA tests carried out by IFVBESA on the energetic and physical effectiveness of the test object have clearly shown that it is able to neutralize or harmonize biologically significant stress factors in relation to the meridians or acupuncture points of the test person.

The bioenergetic system analysis was used to analyze and systemically test the effect of the above-mentioned stress factors on the test subjects, their meridian system and their energy-informative biological control circuits at the energy-informative level. The BESA tests BEFORE - AFTER show significant changes at the tested acupuncture points of the subjects'



meridian system. The measurement data and their key figures impressively confirm the stresses that arise on the human organism on the one hand and illustrate how the deregulating energies are transformed into biocompatible energies after application of the test object on the other.

From a holistic perspective, it can be assumed that the positive effect on the test subjects also occurs in other people.

The fact that the positive influence of the test object is actually possible with high precision is clearly demonstrated by this test using the BESA BEFORE-AFTER comparison. All measured values improved significantly from the mostly 100% blue measuring range to the mostly 50-second green range (scale value), i.e. the range of optimal measured values.

This means that optimal regulation dynamics have taken place.

In terms of the IFVBESA, we can clearly speak of an optimal, significant improvement in the body's own energy situation

Result:

The test subjects were brought into contact with the test object during the BESA AFTER tests. In contrast to the BEFORE tests, in which the test object was not used, consistently positive measurement results were recorded, indicating that neutralization or harmonization had taken place.

The regulatory dynamics developed into an optimal effective range.

By demonstrating the energy-informative effectiveness of the test object in this detailed project P77 1.2, the requirements for obtaining a BESA seal of approval from the International Association for BESA were met.